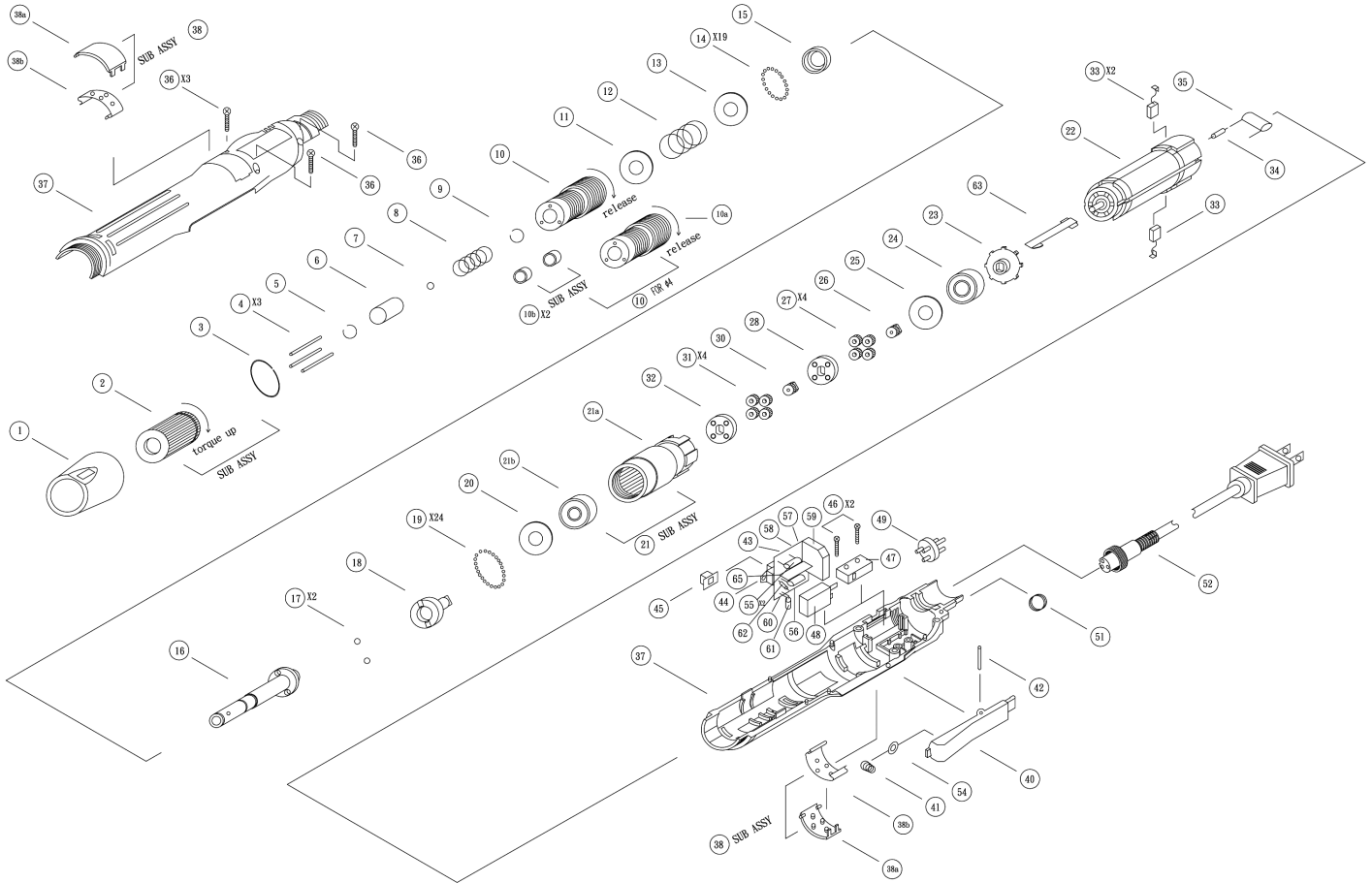


AE-2015 ELECTRIC SCREWDRIVER

EXPLODED VIEW



PARTS LIST — FOR REFERENCE ONLY

Index Number	Part Number	Description	Qty.	Index Number	Part Number	Description	Qty.	Index Number	Part Number	Description	Qty.
1	6H1041	Retaining Ring	1	22	2M5031	Motor 110 V	1	42	4N1017	Pin	1
2	4J1089	Regulation Handle Sub Ass'y	1	22	2M5032	Motor 220 V	1	43	2A6015	Powerboard Sub Ass'y	1 set
3	4U1056	Snap Ring	1	23	6R2021	Fan	1	(Available as set only. Individual parts not available for purchase.)			
4	4N1025	Push Pin (L=17.6)	3	24	4E1018	Ball Bearing	1	55		Capacitor	2
5	4U1052	Snap Ring	1	25	4W3012	Washer	1	56		Capacitor	1
6	4H2081	Bit Slide Sleeve	1	26	4G1613	Driving Gear	1	57		Resistor	2
7	4B1026	Ball	1	27	4G2652	First Planet Gear	4	58		Circuit Board	1
8	4S3064	Sleeve Spring	1	28	4L1813	First Gear Cage	1	59		Bridge Rectifier	1
9	4U1051	Snap Ring	1	30	4G1611	Gear (14T)	1	60		Resistor	1
10	4T1021	Hammer Casing	1	31	4G2685	Second Planet Gear (14T)	4	61		LED	1
11	4W4215	Push Washer	1	32	4L1812	Second Gear Cage	1	62		Silicon Rectifier	1
12	4S1040	Spring	1	33	2B1014	Brush (Pair)	2	63		Spring Connector	1
13	4W4811	Push Washer	1	34	2R2014	Resistor	1	65		Insulation Spacer	1
14	4B1024	Ball	19	35	2C6812	Capacitor	1	44	2S2019	FWD/REV Slide SW	1
15	4E2016	Ball Bearing	1	36	8T2690	Tapping Screw	3	45	6V1042	Push Button	1
16	4C1302	Anvil Sub Ass'y	1	37	6Z1077	Plastic Housing (L+R)	1	46	8T2047	Tapping Screw	2
18	4K1071	Hammer	1	38	6A2011	Carbon Maintenance Bonnet Sub Ass'y	1 set	47	2S3012	Micro Switch	1
19	4B1024	Ball	24	(Available as set only. Individual parts not available for purchase.)				48	2F3015	Protector	1
20	4W3213	Washer	1	38a		Carbon Maintenance Bonnet Set	2	49	2G1016	3P Socket	1
21	4A7010	Gear Housing Sub Assembly	1 set	38b		Spring Connector	2	51	4F1023	Hanger Ring	1
(Available as set only. Individual parts not available for purchase.)				40	6P3013	Trigger	1	52	2W1086	AC Cord (Old #2W1027)	1
21a		Gear Housing	1	41	S43051	Spring	1	53	8T1087	Screw	1
21b		Ball Bearing	1					54	4W1213	Washer	1

FOOTNOTES



10000 SE PINE
PORTLAND, OR 97216
503-254-6600
FAX 503-255-2615

When ordering spare parts, please specify
tool type, part number, and description.