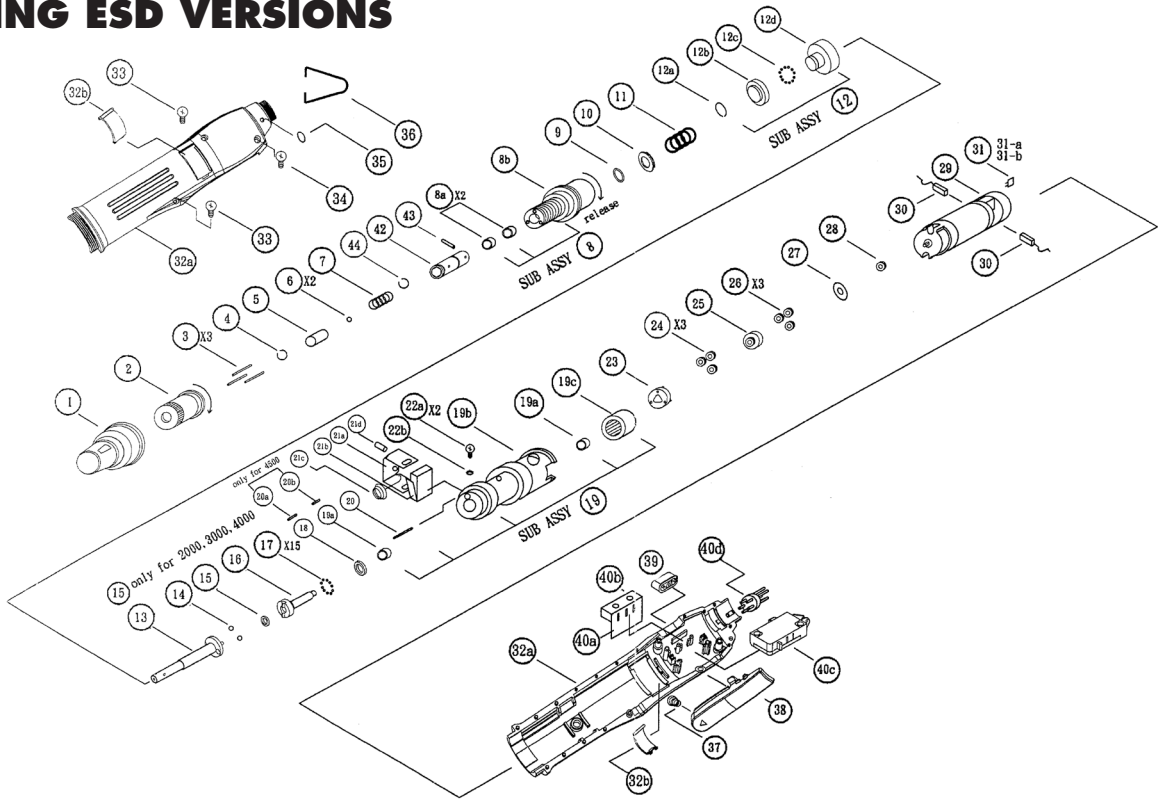


AE-2020, -4020, -4520 ELECTRIC SCREWDRIVERS

INCLUDING ESD VERSIONS



PARTS LIST — FOR REFERENCE ONLY

Index Number	Part Number	Description	Qty.	Index Number	Part Number	Description	Qty.	Index Number	Part Number	Description	Qty.
COMMON PARTS								FOR AE-4520 MODELS			
1	6H1053	Retaining Ring	1	32	6A1036	Plastic Housing (L+R) (Blue Gray) with Carbon Maintenance Bonnet Set	1	2	411081	Regulating Handle	1
3	4N1026	Push Pin L=18.8	3	32a	6Z1226	Plastic Housing (L+R) (Blue Gray)	1	11	451149	Spring (1.6)	1
4	4U1052	Snap Ring (1.2 x 9.2)	1	32b	6C5026	Carbon Maintenance Bonnet Set (Blue Gray)	2	13	4C1024	Anvil	1
5	4H2081	Bit Slide Sleeve	1	33	8T1624	Screw (2.0 x L=6)	2	15b	4B1027	Ball (3.0)	1
6	4B1026	Ball (2.5)	2	34	8T1663	Screw (2.6 x L=5)	1	16	4K2048	Hammer (High 1.95 mm)	1
7	4S3074	Sleeve Spring (0.6)	1	35	4F1023	Hanger Ring	1	20a	4N1145	Roller Pin (2.0 x L=5.8)	1
8	4A1025	Hammer Casing Sub Ass'y	1	36	4F1012	Hanger Ring	1	20b	4N1146	Roller Pin (2.0 x L=6.8)	1
8a	4Q1047	Ball Bearing (7 x 11 x 3T)	2	37	4S3051	Trigger Spring (0.55)	1	21	2A7012	Micro Switch Sub Ass'y	(1)
8b	4T1035-1	Hammer Casing	1	38	6P4013	Fwd. Trigger	1	21a	4V1032	Fixing Plate	1
9	4W6015	Washer (9.5 x 7 x T=0.2)	1-2	39	6P4023	Rev. Trigger	1	21b	2S3011	Micro Switch	1
10	4W6411	Washer (15.7 x 11.05 x T=3.6)	1	40	2A6039A	Pwb Sub Ass'y	(1)	21c	4S3043	Recoil Spring (0.35)	1
12	4A5025	Retainer Sub Ass'y	(1)	40a	2H1083	Circuit Board	1	21d	4N4015	Spring Cotter (2.0 x L=8)	2
12a	4U1037	Snap Ring (0.8 x ID=8.2)	1	40b	2S3012	Micro Switch SS-10	1	FOR ESD MODELS			
12b	4E6011	Washer	1	40c	2S1021	Micro Switch V-15-1E5	1	1	6H1055	Retaining Ring	1
12c	4B1024	Ball (2.0)	15	40d	2G1023	SP Socket	1	32	6A1035	Plastic Housing (L+R) (Black) with Carbon Maintenance Bonnet Set	(1)
12d	4K6012	Driven Clutch	1	41	2W2122-2	DC Cord	1	32a	6Z1225	Plastic Housing (L+R) (Black)	1
14	4B1029	Ball (4.0)	2	42	4C1191	Bit Holder	1	32b	6C5025	Carbon Maintenance Bonnet Set (Black)	2
17	4B1024	Ball (2.0)	15	43	4N4012	Spring Cotter	2	32c	6W1212	Insulated Plate	2
18	4E7011	Retainer	1	44	4U1054	Snap Ring	1	ACCESSORIES			
19	4A7029	Gear Housing Sub Ass'y	(1)	FOR AE-2020 & AE-4020 MODELS				4H1089	Torque Cover	1	
19a	4E1021	Ball Bearing	2	2	4J1071-1	Regulating Handle	1	2M9014	Rotor (Standard 720 rpm)	1	
19b	4R1074	Gear Housing	1	11	4S1026	Spring (1.1) (for AE-2020)	1	2M9015	Rotor (High Speed 1000 rpm)	1	
19c	4X1055	Internal Gear 30T	1	13	4C1025	Anvil	1	2M9091	Front Cover of Motor	1	
22a	8T4064	Screw (2.6 x L=6)	2	15a	4E1023	Ball Bearing (3 x 8 x T=4)	1	2M9092	Rear Cover of Motor	1	
22b	4W1712	Star Washer	2	16	4K2046	Hammer (High 1.6 mm) (for AE-2020)	1	4A9121	Right Angle Sub Ass'y	1	
23	4L2851	Second Gear Cage	1	16	4K2047	Hammer (High 1.95 mm) (for AE-4020)	1	2W2173	DC Cable (2.4)	1	
24	4G2654	Second Planet Gear (10T)	3	20	4N1143	Roller Pin (2.0 x L=12.8)	1	2W2174	DC Cable (2.4)	1	
25	4L1654	First Gear Cage (C/W Central Gear)	1	21	2A7016	Micro Switch Sub Ass'y	(1)	2W1024	AC Cord for U.S.A	1	
26	4G2654	First Planet Gear (10T)	3	21a	4V1032	Fixing Plate	1	2W1043	AC Cord for U.K.	1	
27	4W6014	Washer	1	21b	2S3012	Micro Switch SS-SGL	1	2W1054	AC Cord for Australia	1	
28	4G1652	Driving Gear (9T)	1	21c	4S3043	Recoil Spring (0.35)	1	2W1064	AC Cord for Europe	1	
29	2M2062	Motor (High Speed 1000 rpm)	1	21d	4N4015	Spring Cotter (2.0 x L=8)	1	2W1186	AC Cord for U.K. with Fuse	1	
	2M2066	Motor (Standard 720 rpm)	1								
30	2B1018	Carbon Brush	(1)								
31a	2R2014	Resistor (100Ω 1/4W)	1								
31b	2C6616	Capacitor (104J 100V)	1								



10000 SE PINE
PORTLAND, OR 97216
503-254-6600
FAX 503-255-2615

When ordering spare parts, please specify
tool type, part number, and description.

FOOTNOTES