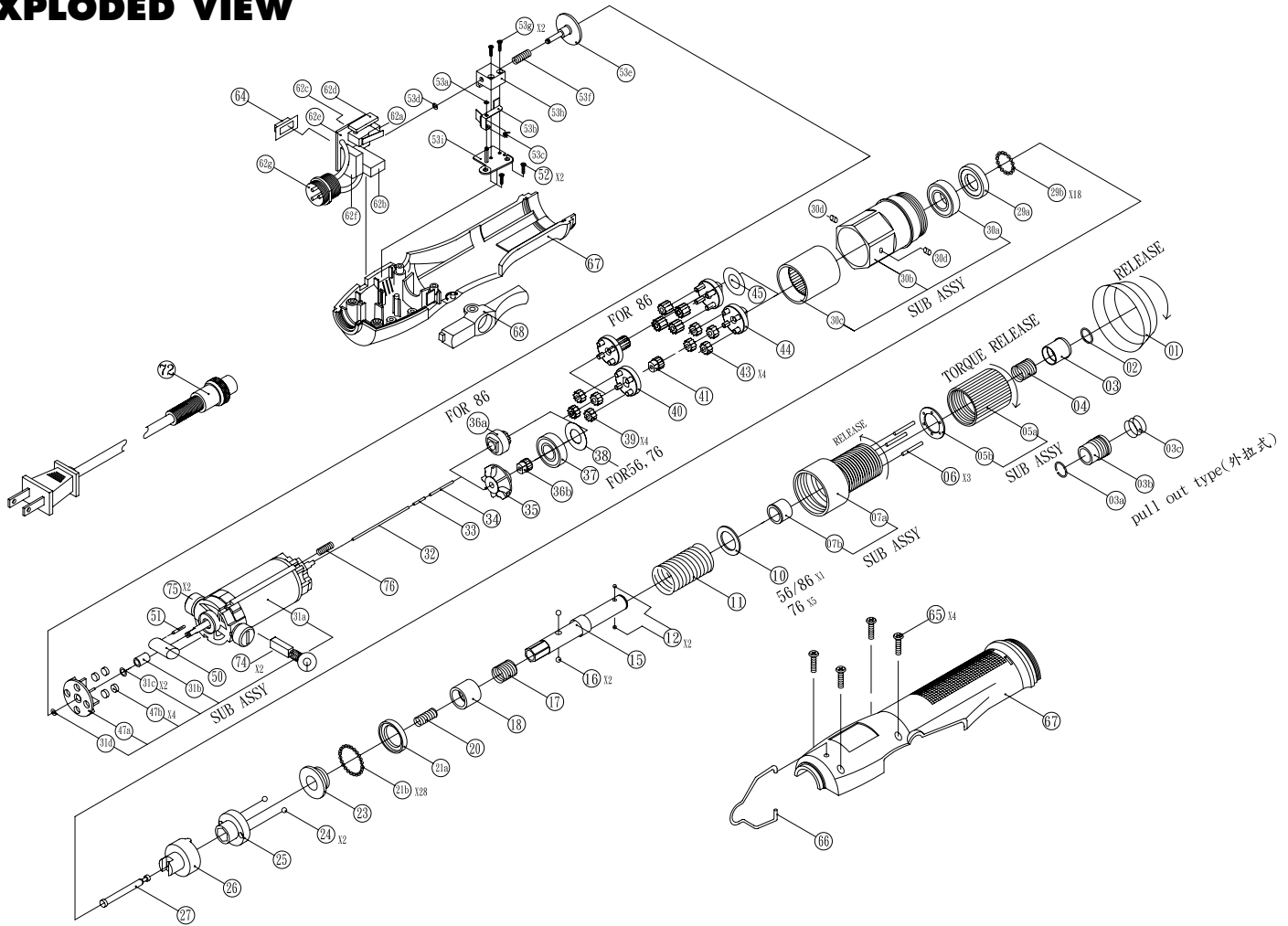


AE-8681 ELECTRIC SCREWDRIVER

EXPLODED VIEW



PARTS LIST — FOR REFERENCE ONLY

Index Number	Part Number	Description	Qty.	Index Number	Part Number	Description	Qty.	Index Number	Part Number	Description	Qty.
1	4H1101	Retaining Ring	1	30	4A7012	GEAR HOUSING SUB ASSY (FOR AE-8681)	(1)	53a	6W1012	PLASTIC WASHER	1
2	4U1051	Snap Ring	1	30a	4E1019	BALL BEARING	1	53b	4S5016	SPRING PLATE	1
3a	4U1051	Snap Ring - Pull Out Type	1	30b	4R1064	GEAR HOUSING	1	53c	4S3101	SUPPORT SPRING	1
3b	4H2048	Bit Slide Sleeve - Pull Out Type	1	30c	4X1065	INNER GEAR BOX	1	53d	4U1061	SNAP RING	1
3c	4S3065	Sleeve Spring (For Pull Type)	1	30d	4B3025	NEEDLE ROLLER	2	53e	4K4011	BRAKING DISK	1
4	4S3045	Sleeve Spring (For Pull Type)	1	31	2A1024	MOTOR SUB ASSY (FOR 115V)	(1)	53f	4S2027	SPRING	1
5	4A4022	Regulating Handle Sub. Assy inc.005a-005b (FOR AE-8681)	(1)	31a	2M5021	MOTOR	1	53g	8T3326	SCREW	2
5a	4J1064	Regulating Handle	1	31b	4Q1073	ANVIL BUSHING	1	53h	4V1026	SLIDE BASE	1
5b	4W4712	Washer	1	31c	6W1013	PLASTIC WASHER	2	53i	4V1122	FIXING PLATE	1
6	4N1025	Push Pin	1	31d	6W1014	PLASTIC WASHER	1	62	2A6023A	PWB SUB ASSY INC.062a-062g	(1)
7	4A1021	Hammer Casing Sub. Assy inc.007a-007b (FOR AE-8681)	(1)	31e	4U1066	SNAP RING	1	62a	2S3011	MICRO SWITCH	1
7a	4T1073	Hammer Casing	1	31f	2A1025	MOTOR SUB ASSY (FOR 230V)	(1)	62b	2F3015	PROTECTOR	1
7b	4Q1064	Anvil Bushing	1	31g	2M5022	MOTOR	1	62c	2S2019	FWD/REV SLIDE SWITCH	1
10	4W4712	Washer (For AE-8681)	1	31h	4Q1073	ANVIL BUSHING	1	62d	2C6812	CAPACITOR	1
11	4S1104	Spring (For AE-8681)	1	31i	6W1013	PLASTIC WASHER (T=0.5)	2	62e	2H1079	CIRCUIT BOARD	1
12	4B1025	Ball	2	31j	6W1014	PLASTIC WASHER (T=0.25)	1	62f	2E1036	BIDGE RECTIFIER	1
15	4C1153	Anvil (For Pull Type)	1	31k	4U1066	SNAP RING	1	62g	2G1014	3P PLUG	1
16	4B2018	BALL	2	32	4N4024	GUIDE PIN A	1	64	6V1042	PUSH BUTTON	1
17	4S3067	SPRING	1	33	4N4032	GUIDE PIN B	1	65	6V1041	SNAP BUTTON (ESD)	1
18	4K3054	SLIDE SLEEVE (L=9.6)	1	34	4N1131	GUIDE PIN C	1	66	4F1041	HANGER RING	1
19	4K3058	SLIDE SLEEVE (L=9.4)	1	36a	6G9011	CONNECTOR GEAR (FOR AE-8681)	1	67	6Z3013	PLASTIC HOUSING[L+R]	1
20	4S2025	SPRING	1	39	4G2687	FIRST PLANET GEAR (FOR AE-8681)	4	68	6Z3010	PLASTIC HOUSING[L+R] (ESD)	1
21	4A5017	RETAINER SUB ASSY - RETAINER	(1)	40	4L1885	FIRST PLANET GEAR (FOR AE-8681)	1	69	6P1027	TRIGGER	1
21a	4E2015	RETAINER	1	43	4G2689	SECOND PLANET GEAR (FOR AE-8681)	4	72	6P1020	TRIGGER (ESD)	1
21b	4B1024	BALL	28	44	4L2823	SECOND GEAR CAGE (FOR AE-8681)	1	74	2W1081	AC CORD FOR USA	1
23	4K3048	DRIVEN CLUTCH	1	45	4W4212	WASHER (FOR AE-8681)	1	75	2W1082	AC CORD FOR EUROPE	1
24	4B1028	BALL	2	47	6A3012	FAN SUB ASSY INC.047a-b	(1)	76	2W1083	AC CORD FOR U.K.	1
25	4K2033	HAMMER	1	47a	6R2013	FAN	1	74	2B1015	CARBON BRUSH [PAIR]	(1)
26	4K1073	HAMMER SHANK	1	47b	2V1016	MAGNET	4	75	6V1021	BRUSH COVER	2
27	4C2041	SLIDE PIN	1	50	2C6811	CAPACITOR	1	76	4S2027	SPRING FOR GROUNDING	1
29	4A5018	RETAINER SUB ASSY - RETAINER	(1)	51	2R2014	RESISTOR	1	OTHERS			
29a	4E2014	RETAINER	1	52	8T2685	SCREW	2	4H2055	TORQUE COVER		
29b	4B1026	BALL	18	53	4A6011	BRAKING DISK SUB ASSY INC.053a-053i	(1)	4H2022	TORQUE REACTING RING		

FOOTNOTES

AIMCO offers a complete line of Tool Support products. Visit our website at www.aimco-global.com



10000 SE PINE,
PORTLAND, OR 97216
503-254-6600
FAX 503-255-2615

When ordering spare parts, please specify tool type, part number and description.