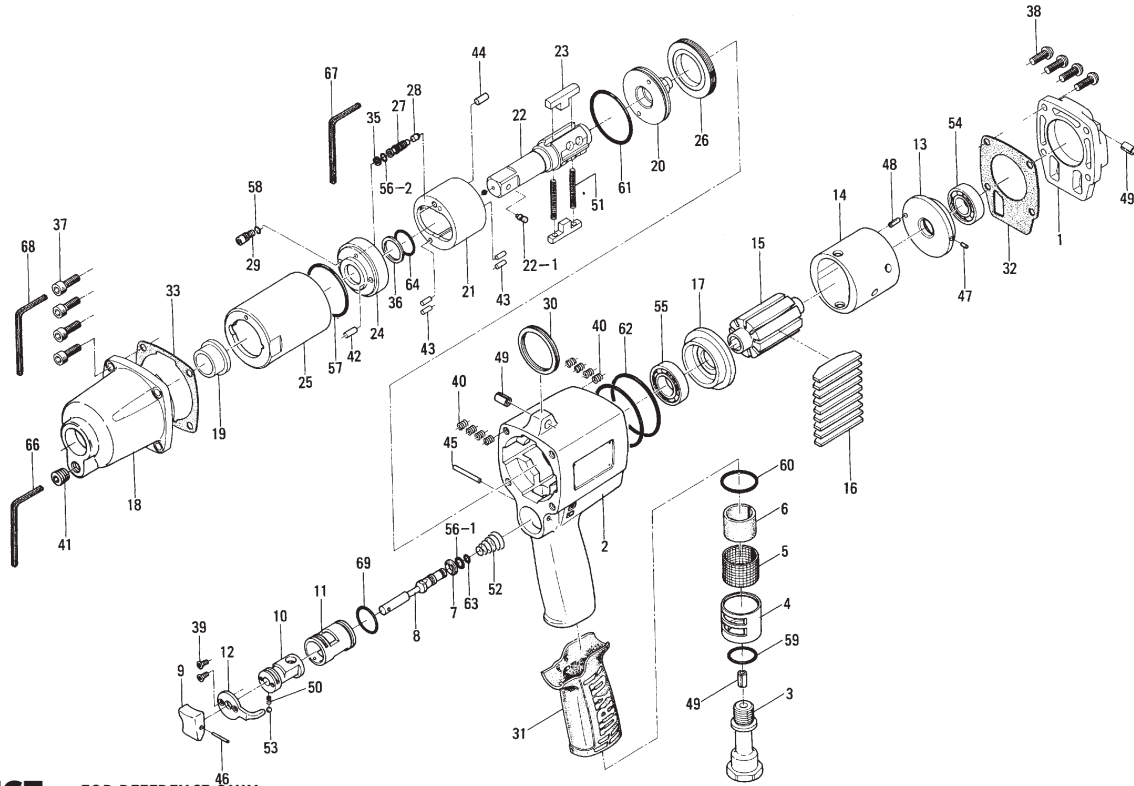


EXPLODED VIEW



PARTS LIST — FOR REFERENCE ONLY

Index Number	Part Number	Description	Qty.	Index Number	Part Number	Description	Qty.	Index Number	Part Number	Description	Qty.
1	162-025-0	Casing	1	36	969-449-0	Pin (G) (3 x 6)	1	79	020-430-1	Driven Gear (P)	1
2	162-091-0	Air Inlet Bushing	1	37	970-091-0	Pin (H) (2 x 4.5)	1	80	188-431-7	Driven Gear Spindle	1
3	162-092-0	Air Inlet Bushing Spacer	1	38	970-204-0	Pin (H) (3 x 6)	4	81	020-432-1	Driven Gear Collar	1
4	162-780-0	Exhaust Cover	1	39	970-310-0	Pin (H) (4 x 10)	1	82	020-433-1	Driven Gear Spacer	1
5	259-835-6	Filter	2	40	970-340-0	Pin (H) (4 x 28)	1	83	562-391-7	Wheel Spindle Rear Cover	1
6	259-100-6	Valve	1	41	973-068-0	Roll Pin (2.5 x 8)	2	84	179-488-6	Angle Casing Cover	1
7	553-103-1	Valve Rod Bushing	1	42	973-076-0	Roll Pin (2.5 x 16)	1	85	945-949-0	Hexagon Round Head Bolt (M5 x 6)	1
8	196-107-7	Throttle Lever	1	43	973-124-0	Roll Pin (3 x 24)	1	86	954-206-0	Allen Head Cone Point Screw (M5 x 6)	1
9	171-210-0	Reverse Valve	1	44	976-006-0	Spring (3 x 5 x 0.4)	1	87	975-803-0	Adjusting Spacer (30 x 26 x T)	1
10	162-212-0	Reverse Lever	1	45	976-793-0	Spring (3.7 x 30 x 0.45) WPC	2 ●	88	975-836-0	Adjusting Spacer (36 x 32.5 x T)	1
11	162-222-0	Reverse Valve Retainer	1	46	976-321-0	Spring (13 x 14 x 1.0)	1	89	982-021-0	Ball Bearing (626)	1
12	162-226-0	Auxiliary Reverse Valve	1	47	976-679-0	Spring (31 x 14 x 1.6)	1	90	982-101-0	Ball Bearing (6001)	1
13	162-285-0	Rear Plate	1	48	981-002-0	Ball (1 1/8)	1	91	982-904-0	Ball Bearing (6903)	2
14	162-286-0	Cylinder	1	49	979-319-0	Inner Snap Ring (IRTW-19)	1	92	990-927-0	O-Ring (SNS-34)	1
15	164-287-0	Rotor	1	50	979-358-0	Inner Snap Ring (ISTW-17)	1	93	990-910-0	O-Ring (12 x 16 x 2) (SNS-12-05)	1
16	151-288-4	Blade (PC)	9	51	982-402-0	Ball Bearing (EE3)	1	PARTS FOR ALPHA-70CH			
17	162-289-0	Front Plate	1	52	982-903-0	Ball Bearing (6902)	1	70	160-025-7	Casing	1
18	162-439-0	Front Casing	1	53	992-020-0	O-Ring (Q12-NTN)	1 ●	71	171-439-0	Front Casing	1
19	190-328-6	Anvil Bushing	1	54	990-320-0	O-Ring (ARP568-003)	1 ●	101	171-441-0	Angle Casing	1
20	180-081-4	Front Case Nut	1	56	990-334-0	O-Ring (JW1530-24)	1 ●	102	171-420-0	Driving Gear	1
20-1	162-064-0	Plug	1	57	990-590-0	O-Ring (17 x 1)	2	103	171-430-0	Driven Gear	1
21	194-901-0	Rear Liner Plate	1	58	990-603-0	O-Ring (28.5 x 1.3)	1	104	171-431-0	Driven Gear Spindle	1
22	194-902-1	Liner	1	59	990-900-0	O-Ring (SNS-2)	1 ●	105	171-432-0	Driven Gear Collar	1
23	194-319-0	Anvil (OP-O)	1	60	990-919-0	O-Ring (SNS-22)	1	106	171-488-0	Angle Casing Cover	1
23-1	891-309-1	Anvil (OP-P) Assembly	1	61	990-923-0	O-Ring (SNS-26)	1 ●	107	975-875-0	Adjusting Spacer (44 x 40.2 x T)	1
23-2	891-300-1	Socket Pin Assembly	1	62	990-928-0	O-Ring (SNS-38)	1	108	982-103-0	Ball Bearing (6003)	1
24	194-440-0	Driving Blade	2	63	996-432-0	Packing (19 x 10.5 x 1)	1	109	990-156-0	O-Ring (P16-NTN)	1
25	194-904-0	Front Liner Plate	1	PARTS FOR ALPHA-70C							
26	194-905-0	Liner Casing	1	70	160-025-7	Casing	1	ACCESSORIES			
27	194-906-0	Liner Casing Cover	1	71	171-439-0	Front Casing	1	110	939-091-0	Allen Wrench (1.5 mm) for Alpha-70S	1
28	194-907-0	Relief Valve Spindle	1	72	160-441-7	Angle Casing	1	111	939-108-0	Allen Wrench (4 mm) for Alpha-70S	1
29	194-970-1	Relief Valve	1	73	171-382-0	Hammer Casing Nut	1	112	939-108-0	Allen Wrench (1.5 mm) for Alpha-70CH	1
30	194-742-0	Oil Plug	1	74	160-797-7	Bearing Setter	1				
31	191-790-1	Suspension Ring	1	75	160-799-7	Bearing Setter Nut	1				
33	944-002-0	Supporting Ring (2.6 x 4.5 x 1)	1 ●	76	179-420-6	Driving Gear	1				
34	944-213-0	Supporting Ring Endless (Q12) (12 x 16 x 1)	1 ●	77	179-425-6	Driving Gear Spacer	1				
35	945-000-0	Allen Head Bolt (M3 x 8)	1	78	179-423-6	Driving Gear Metal Spacer	1				



10000 SE PINE
 PORTLAND, OR 97216
 503-254-6600
 FAX 503-255-2615

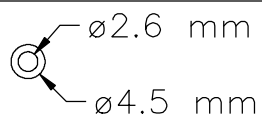
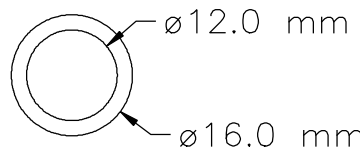
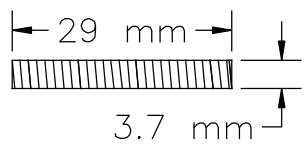
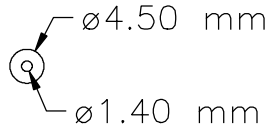
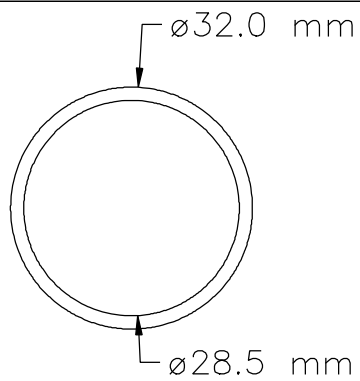
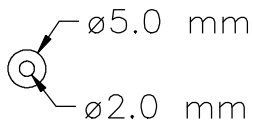
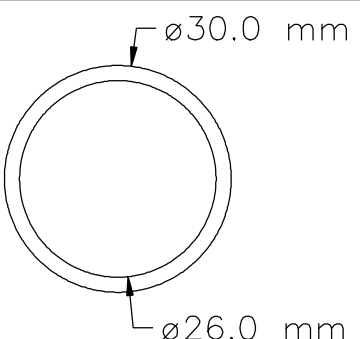
When ordering spare parts, please specify tool type, part number, and description.

FOOTNOTES

● = Items in Pulse Repair Kit Alpha-70C-PRK

ALPHA-70C-PRK

(Kit contains following parts)

#/#	Bin Location	Part Number	QTY	Description	Material	Drawing / Scketch
1	PA10	944-002-0	1	Support Ring 2.6x4.5x1	Teflon-White	
2	PA10	944-213-0	1	Support Ring 12x16x1	Teflon-White	
3	PA1J	976-793-0	2	Spring 3.7x29	Spring wire ø.50 mm	
4	PA1A	990-320-0	1	O-Ring 4.5X1.4X1.6	Buna-Black	
5	PA1A	990-334-0	1	O-Ring (JW1530-24) 28.5x32x1.75	Buna-Black	
6	PA1B	990-900-0	1	O-Ring 5x2x1.5	Buna-Black	
7	PA1B	990-923-0	1	O-Ring (SNS-26) 26x30x2	Buna-Black	

ALPHA-70C-PRK

(Kit contains following parts)

#/#	Bin Location	Part Number	QTY	Description	Material	Drawing / Scketch
8	PA10	992-020-0	1	SU-Ring (Q-12) (NTN)	Buna-Black	