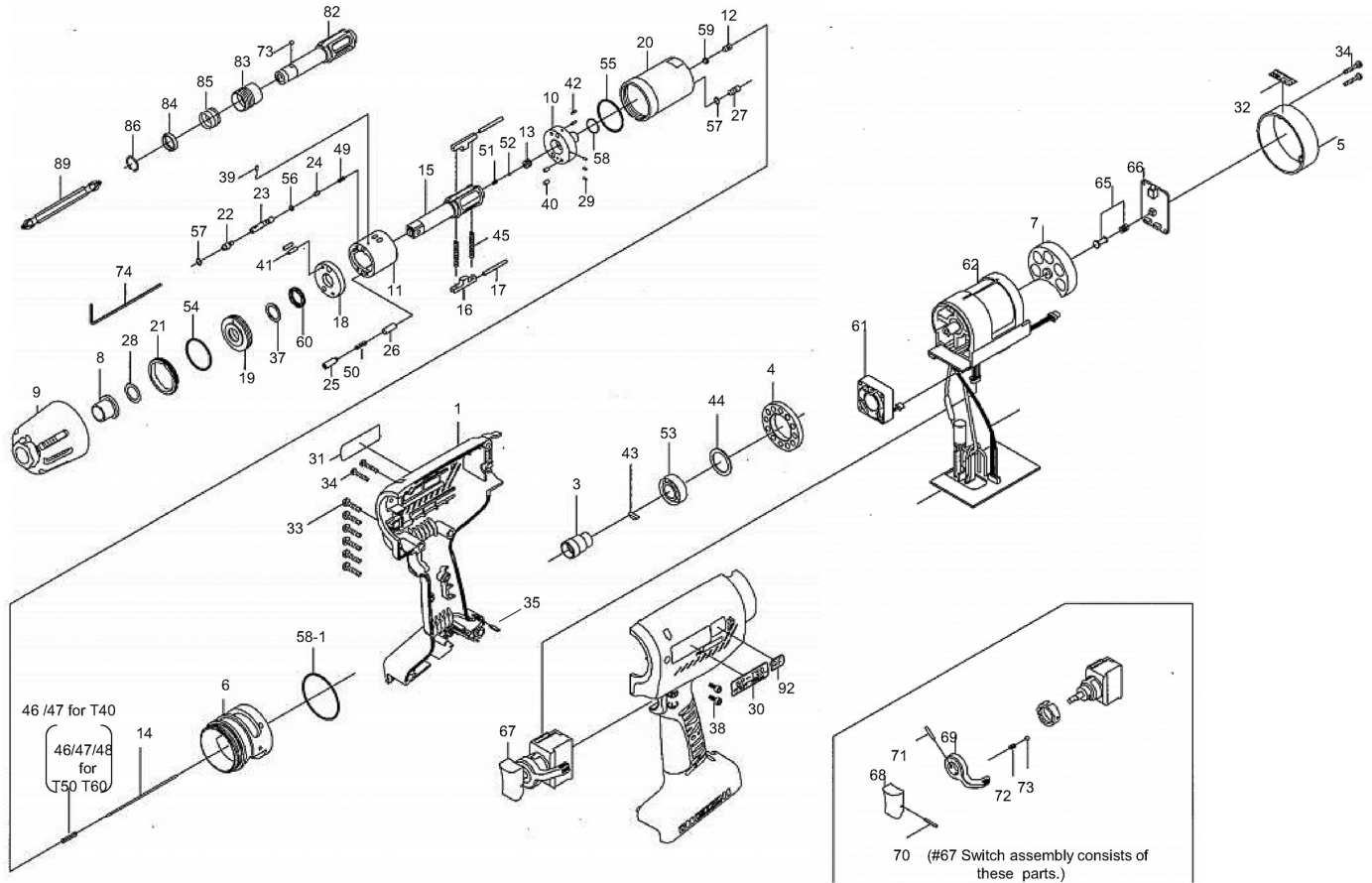


BP-T SERIES BATTERY OIL-PULSE TOOLS

EXPLODED VIEW



PARTS LIST — FOR REFERENCE ONLY

| Index # | Part # | Description | Qty. | Index # | Part # | Description | Qty. | Index # | Part # | Description | Qty. | Index # | Part # | Description | Qty. |
|---|-----------|-------------------------------|------|--|-----------|---------------------------|------|--|-----------|----------------------------|------|---|-----------|------------------------------------|------|
| COMMON PARTS FOR BP-T40, T40D, T50, T50D, T60 & T60D | | | | COMMON PARTS FOR BP-T50, T50D, T60 & T60D | | | | COMMON PARTS FOR BP-T40 & T50 | | | | EXCLUSIVE PARTS FOR BP-T60 | | | |
| 3 | 10E-079-1 | Connector | 1 | 47 | 976-662-0 | Spring (3.3 x 18) (Weak) | 1 | 48 | 976-985-0 | Spring (3.3 x 18) (Strong) | 1 | 15 | 145-319-0 | Anvil | 1 |
| 4 | 10E-065-1 | Handle Front Cover | 1 | 52 | 981-001-0 | Ball (3/32) | 1 | 51 | 976-847-0 | Spring (2.4 x 5.3) | 1 | 74 | 891-300-1 | Socket Pin Assembly | 1 |
| 5 | 10E-012-1 | Handle Cover | 1 | 53 | 982-902-0 | Ball Bearing (6901) | 1 | 75 | 891-554-1 | Anvil Assembly | 1 | 75 | 891-552-1 | Anvil Assembly | 1 |
| 6 | 10E-036-1 | Hammer Casing Connector | 1 | 54 | 990-329-0 | O-Ring (JW1 530-19) | 1 | COMMON PARTS FOR BP-T40D & T50D | | | | EXCLUSIVE PARTS FOR BP-T60D | | | |
| 8 | 190-328-6 | Anvil Bushing | 1 | 55 | 990-605-0 | O-Ring (25 x 1.45) | 1 | 82 | 145-350-2 | Driver Anvil | 1 | 82 | 145-350-7 | Driver Anvil | 1 |
| 12 | 145-546-6 | Piston | 1 | 56 | 990-621-0 | O-Ring (3.8 x 1.8 x 1.0) | 1 | COMMON PARTS FOR BP-T40 & T40D | | | | COMMON PARTS FOR BP-T40D, T50D, & T60D | | | |
| 13 | 145-929-6 | Check Valve Cover | 1 | 57 | 990-900-0 | O-Ring (SNS-2) | 1 | 23 | 092-970-8 | Relief Valve | 1 | 73 | 981-002-0 | Ball (1/8) | 1 |
| 14 | 10E-130-1 | Operating Rod (1.4 x 81.5) | 1 | 58 | 990-906-0 | O-Ring (SNS-8) | 1 | 25 | 17C-276-4 | Pressure Valve Body | 1 | 83 | 011-351-1 | Bit Sleeve | 1 |
| 18 | 18C-973-8 | Liner Casing Spacer | 1 | 58-1 | 990-933-0 | O-Ring (SNS-39) | 1 | 49 | 976-756-0 | Spring (2.8 x 6.9) | 1 | 84 | 011-352-1 | Bit Spacer | 1 |
| 19 | 18E-904-1 | Front Liner Plate | 1 | 59 | 991-025-0 | X-Ring (4.7 x 2.2 x 1.25) | 1 | 51 | 976-653-0 | Spring (2.4 x 5.3) | 1 | 85 | 976-327-0 | Spring (13.5 x 11) | 1 |
| 21 | 10E-906-1 | Liner Casing Cover | 1 | 60 | 991-030-0 | X-Ring (X12) | 1 | 62 | 911-030-0 | Motor Assembly | 1 | 86 | 978-117-0 | Snap Ring (11.7 x 1.0) | 1 |
| 22 | 145-907-6 | Relief Valve Spindle | 1 | 61 | 911-033-0 | Fan Assembly | 1 | COMMON PARTS FOR BP-T50 & T50D | | | | ACCESSORIES | | | |
| 24 | 144-270-0 | Pressure Regulator Valve | 1 | 65 | 861-173-1 | Slide Base Assembly | 1 | 23 | 093-970-8 | Relief Valve | 1 | 74 | 939-091-0 | Allen Wrench (1.5) (80 x 20) | 1 |
| 26 | 080-274-6 | Pressure Valve Spring Collar | 1 | 66 | 863-972-1 | Control Board and LED | 1 | 25 | 078-276-7 | Pressure Valve Body | 1 | 89 | 916-810-0 | Double Bit (No.2 x 75) for Drivers | 1 |
| 27 | 194-742-0 | Oil Plug | 1 | 67 | 09B-174-4 | Switch Assembly | 1 | 49 | 976-826-0 | Spring (2.9 x 7.6) | 1 | | | | |
| 28 | 145-327-7 | Anvil Front Spacer | 1 | 68 | 147-107-2 | Valve Lever | 1 | 62 | 911-031-0 | Motor Assembly | 1 | | | | |
| 29 | 150-064-5 | Plug | 3 | 69 | 09B-212-5 | Reverse Lever | 1 | COMMON PARTS FOR BP-T60 & T60D | | | | | | | |
| 30 | 10A-924-1 | Name Plate for BP-T40 | 1 | 70 | 973-014-0 | Roll Pin (2 x 14) | 1 | 9 | 10E-439-1 | Front Casing | 1 | | | | |
| | 10A-924-0 | Name Plate for BP-T40D | 1 | 71 | 973-018-0 | Roll Pin (2 x 18) | 1 | 10 | 10E-901-1 | Rear Liner Plate | 1 | | | | |
| | 10C-924-1 | Name Plate for BP-T50 | 1 | 72 | 976-006-0 | Spring (3 x 5) | 1 | 11 | 10E-902-1 | Liner | 1 | | | | |
| | 10C-924-0 | Name Plate for BP-T50D | 1 | 73 | 981-002-0 | Ball (1/8) | 1 | | | | | | | | |
| | 10E-924-1 | Name Plate for BP-T60 | 1 | COMMON PARTS FOR BP-T40, T40D, T50 & T50D | | | | | | | | | | | |
| | 10E-924-0 | Name Plate for BP-T60D | 1 | 1 | 10C-025-1 | Handle | 1 | | | | | | | | |
| 31 | 094-997-4 | Plate (Address & Others) | 1 | 7 | 10C-013-2 | Handle Rear Cover | 1 | | | | | | | | |
| 32 | 094-996-4 | Plate (Warning) | 1 | 9 | 10C-439-1 | Front Casing | 1 | | | | | | | | |
| 33 | 963-253-0 | Tapping Screw (3 x 16) | 6 | 10 | 10C-901-1 | Rear Liner Plate | 1 | | | | | | | | |
| 34 | 861-181-1 | Tapping Screw | 4 | 11 | 10C-902-1 | Liner | 1 | | | | | | | | |
| 35 | 910-404-0 | Battery Level Display Cover | 1 | | | | | | | | | | | | |
| 37 | 944-213-0 | Supporting Ring (12 x 16 x 1) | 1 | | | | | | | | | | | | |
| 38 | 945-024-0 | Allen Head Screw (M3 x 8) | 2 | | | | | | | | | | | | |
| 39 | 970-013-0 | Pin (H) (1.5 x 4) | 1 | | | | | | | | | | | | |

FOOTNOTES

- = Items in Pulse Repair Kit T40(D)-PRK
- = Items in Pulse Repair Kit T50(D)-PRK
- ▲ = Items in Pulse Repair Kit T60(D)-PRK



10000 SE PINE
PORTLAND, OR 97216
503-254-6600
FAX 503-255-2615

When ordering spare parts, please specify
tool type, part number, and description.