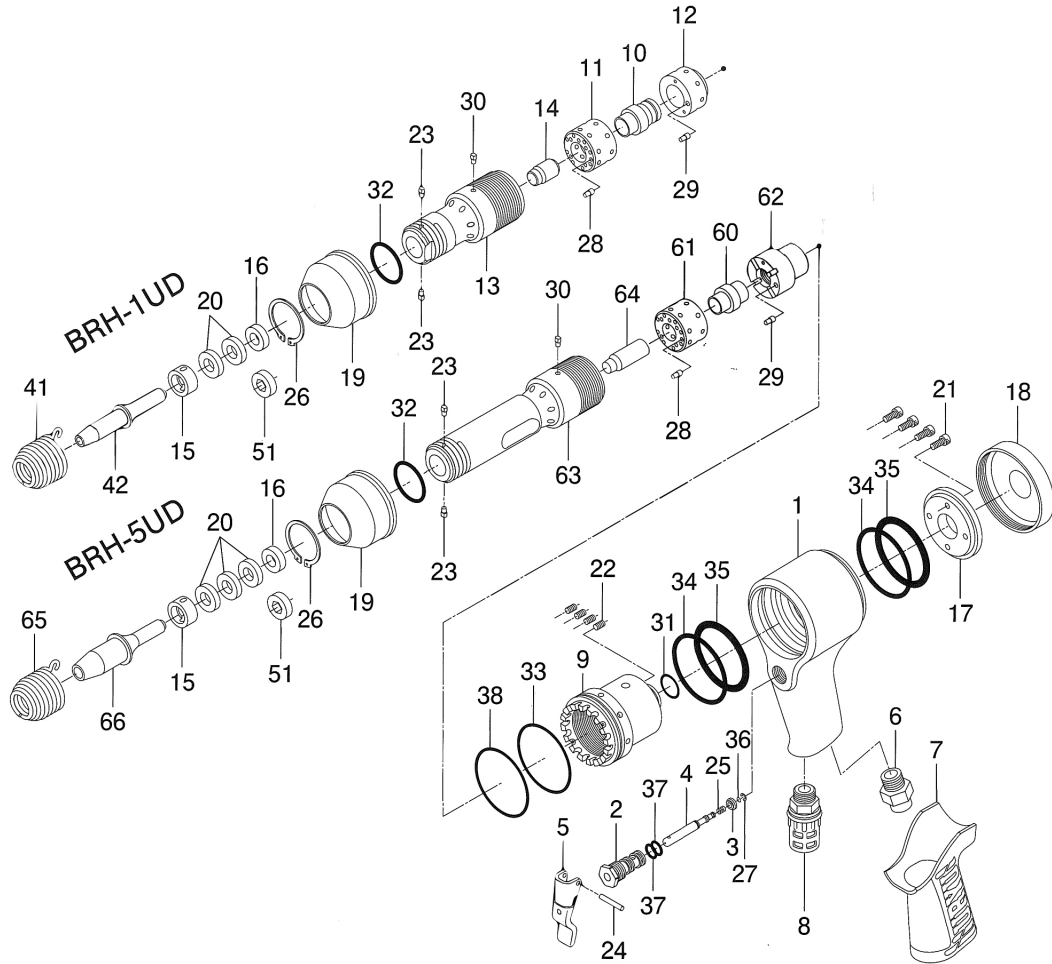


# BRH-1UD(R)(H) & BRH-5UD(R)(H) SUPER VIBRATION-PROOF RIVETING HAMMER

## EXPLODED VIEW



## PARTS LIST — FOR REFERENCE ONLY

Index Number	Part Number	Description	Qty.	Index Number	Part Number	Description	Qty.	Index Number	Part Number	Description	Qty.
1	709-011-0	Handle	1	22	965-005-0	Heli-Sert (M4 x 1D)	4	61	710-196-1	Valve Box	1
2	709-101-0	Valve Bushing	1	23	969-449-0	Pin (G) (3 x 6)	2	62	710-197-1	Valve Box Cover	1
3	147-100-3	Valve	1	24	973-120-0	Roller Pin (3 x 20)	1	63	709-286-4	Cylinder	1
4	709-104-0	Valve Rod	1	25	976-457-0	Spring (7 x 12) (0.9)	1	64	710-546-2	Piston	1
5	130-107-2	Valve Lever	1	26	979-127-0	Outer Snap Ring (30)	1	<b>COMPONENTS FOR BRH-1UD(H) &amp; BRH-5UD(H)</b>			
6	185-091-7	Air Inlet Bushing	1	27	979-405-0	Outer Snap Ring (E2.5)	1	51	708-567-9	Bushing (H)	1
7	709-842-0	Handle Cover	1	28	980-005-0	Round Head Notch (2.5)	1	<b>A C C E S S O R I E S</b>			
8	235-885-0	Silencer Assembly	1	29	980-006-0	Round Head Notch (3)	1	For BRH-1UD(R/H)			
9	710-025-7	Casing	1	30	980-010-0	Flat Head Notch (3)	1	41	705-810-1	Retainer Spring (Small)	1
10	705-195-1	Main Valve	1	31	990-016-0	O-Ring (P16)	1		708-813-8	Retainer Spring (Flat)	1
11	705-196-1	Valve Box	1	32	990-027-0	O-Ring (P28)	1	For BRH-1UD(R)			
12	705-197-1	Valve Box Cover	1	33	990-042-0	O-Ring (P45)	1	42	920-021-0	Round Head Rivet Set (3.0)	1
13	708-286-8	Cylinder	1	34	990-045-0	O-Ring (P48A)	2	For BRH-5UD(R/H)			
14	705-546-1	Piston	1	35	990-860-0	O-Ring (P48A) (Vibration proof)	2	65	710-812-1	Retainer Spring (Large)	1
15	708-682-8	Buffer Bushing	1	36	990-306-0	O-Ring (ARP568-004) (H)	1		708-813-8	Retainer Spring (Flat)	1
16	708-567-8	Bushing (R)	1	37	990-610-0	O-Ring (8 x 2)	2	For BRH-5UD(R)			
17	710-012-7	Casing Cover	1	38	990-934-0	O-Ring (SNS-44)	1	66	920-040-0	Round Head Rivet Set (6.0)	1
18	710-767-7	Casing Protector	1	<b>COMPONENTS FOR BRH-5UD(R)</b>							
19	710-782-8	Exhaust Deflector	1	20	708-834-8	Vibration-Proof Rubber	3				
20	708-834-8	Vibration-Proof Rubber	2	60	710-195-1	Main Valve	1				
21	945-010-0	Allen Head Bolt (M4 x 10)	4								

## FOOTNOTES



10000 SE PINE  
PORTLAND, OR 97216  
503-254-6600  
FAX 503-255-2615

When ordering spare parts, please specify tool type, part number, and description.