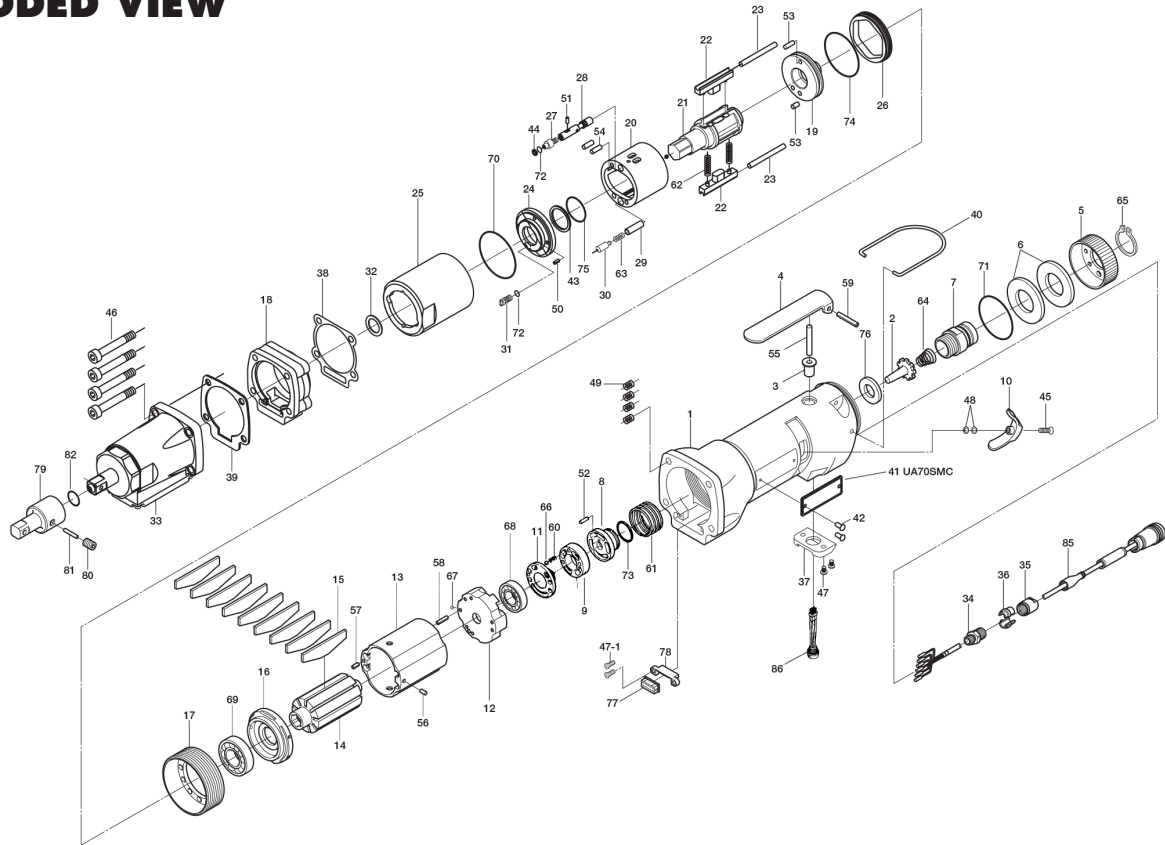


UA-70SMC OIL-PULSE WRENCHES

EXPLODED VIEW



PARTS LIST — FOR REFERENCE ONLY

Index Number	Part Number	Description	Qty.	Index Number	Part Number	Description	Qty.	Index Number	Part Number	Description	Qty.
1	17H-025-5	Casing	1	32	178-327-0	Anvil Front Spacer	1	62	976-788-0	Spring 3.5 x 25	2
2	259-100-0	Valve	1	33	851-698-1	Sensor Casing Assembly	1	63	976-755-0	Spring 3 x 13.3	1
3	161-103-3	Valve Rod Bushing	1	34	149-079-2	Connector	1	64	977-227-0	Cone Spring 9 x 12 x 25	1
4	196-107-7	Valve Lever	1	35	149-018-2	Cap	1	65	979-358-0	Snap Ring ISTW17	1
5	161-782-6	Exhaust Cover	1	36	149-562-2	Stopper	2	66	981-002-0	Ball 1/8	1
6	161-835-6	Filter	2	37	192-718-6	Fixing Plate	1	67	981-045-0	Ball 1.5	1
7	161-091-6	Air Inlet Bushing	1	38	17H-856-5	Separator Packing	1	68	982-014-0	Ball Bearing 607	1
8	161-226-6	Auxiliary Reverse Valve	1	39	131-867-7	Front Casing Packing	1	69	982-902-0	Ball Bearing 6901	1
9	161-210-6	Reverse Valve	1	40	191-790-1	Suspension Ring	1	70	990-334-0	O Ring JW1530-24	1
10	496-212-2	Reverse Lever	1	41	17H-924-5	Name Plate UA70SMC	1	71	990-603-0	O Ring 28.5 x 1.3	1
11	161-222-6	Reverse Valve Retainer	1	42	930-205-0	Driver Rivet	2	72	990-900-0	O Ring SNS-2	2
12	129-285-2	Rear Plate	1	43	944-013-0	Back-up Ring P12	1	73	990-916-0	O Ring SNS-18	1
13	129-286-7	Cylinder	1	44	944-203-0	Back-up Ring 3.1 x 5 x 1	1	74	990-923-0	O Ring SNS-26	1
14	129-287-6	Rotor	1	45	945-001-0	Allen Head Bolt M3 x 10	1	75	992-020-0	SU-Ring Q12	1
15	128-288-6	Blade	9	46	945-135-0	Allen Head Bolt M5 x 16	4	76	996-423-0	Urethane Packing 16 x 10 x 2	1
16	128-289-8	Front Plate	1	47	948-001-0	Round Head Screw M2.6 x 8	2	77	909-918-0	Double-Row Socket	1
17	17H-036-5	Hammer Casing Connector	1	47-1	957-256-0	Cross Head Screw M2 x 5	2	78	911-017-0	Connector Cover	1
18	17H-027-5	Separator	1	48	961-008-0	Spring Washer 3	2	79	904-090-0	Extension Bar 3/8 x 45	1
19	17E-901-0	Rear Liner Plate	1	49	965-011-0	Heli-sert M5 x 1.5D	4	80	953-104-0	Allen Head Screw M4 x 4	1
20	18E-902-3	Liner	1	50	969-449-0	Pin (G) 3 x 6	1	81	971-214-0	Pin 3 x 14	1
21	851-982-1	Anvil	1	51	970-013-0	Pin (H) 1.5 x 4	1	82	990-011-0	O-Ring P-12	1
22	147-440-6	Driving Blade	2	52	970-014-0	Pin (H) 1.5 x 6.8	1	ACCESSORIES			
23	147-974-6	Roller 2.5 x 28	2	53	970-202-0	Pin (H) 3 x 4.5	2	85	910-331-0	Joint Cable Assembly	1
24	18E-904-3	Front Liner Plate	1	54	970-204-0	Pin (H) 3 x 6	2	86	910-332-0	LED Lamp Assembly	1
25	17E-905-0	Liner Casing	1	55	970-222-0	Pin (H) 3 x 22	1	87	909-921-0	Sensor Cable Assembly 3F5	1
26	147-906-6	Liner Casing Cover	1	56	971-102-0	Pin 2 x 3.8	1	88	939-090-0	Allen Wrench 1.5 / Relief Valve	1
27	174-907-2	Relief Valve Spindle	1	57	973-008-0	Roll Pin 2 x 8	1	89	940-114-0	Air Hose Nipple NPT1/4 x 3/8	1
28	17E-970-0	Relief Valve	1	58	973-018-0	Roll Pin 2 x 18	1	90	909-749-0	Solenoid Valve Assembly	1
29	18F-274-2	Spring Holder	1	59	973-124-0	Roll Pin 3 x 24	1				
30	080-276-6	Pressure Adjusting Valve	1	60	976-006-0	Spring 3 x 5	1				
31	194-742-0	Oil Plug	1	61	976-654-0	Spring 29 x 14	1				

FOOTNOTES



10000 SE PINE
PORTLAND, OR 97216
503-254-6600
FAX 503-255-2615

When ordering spare parts, please specify tool type, part number, and description.