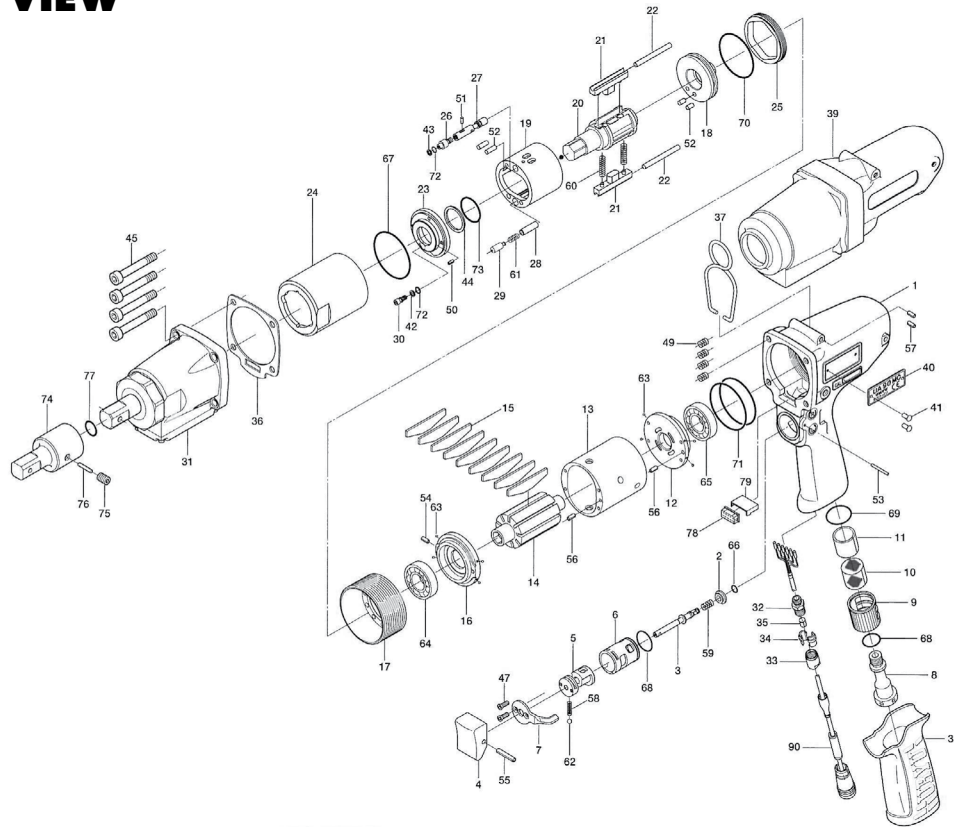


UA-90MC OIL-PULSE WRENCH

EXPLODED VIEW



PARTS LIST — FOR REFERENCE ONLY

Index Number	Part Number	Description	Qty.	Index Number	Part Number	Description	Qty.	Index Number	Part Number	Description	Qty.
1	17E-025-9	Handle	1	31	851-681-1	Sensor Casing Assembly (S08S)	1	63	981-045-0	Ball (1.5)	8
2	147-100-8	Valve	1	32	851-301-1	Connector	1	64	982-903-0	Ball Bearing (6902)	1
3	147-104-8	Valve Rod	1	33	851-302-1	Cap	1	65	982-949-0	Ball Bearing (16001)	1
4	147-107-2	Valve Lever	1	34	851-303-1	Stopper	2	66	990-306-0	O-Ring (APR-569-004)	1
5	147-210-8	Reverse Valve	1	35	131-395-8	Outer Ring	1	67	990-337-0	O-Ring (JW1530-27)	1 ●
6	147-211-8	Reverse Valve Bushing	1	36	149-867-5	Front Casing Packing	1	68	990-914-0	O-Ring (SNS-16)	2
7	147-212-8	Reverse Lever	1	37	174-790-0	Suspension Ring	1	69	990-919-0	O-Ring (SNS-22)	1
8	147-091-8	Air Inlet Bushing	1	38	17D-842-3	Handle Cover	1	70	990-924-0	O-Ring (SNS-30)	1 ●
9	147-780-9	E x haust Stack	1	39	131-840-8	Casing Protector	1	71	990-932-0	O-Ring (SNS-42)	2
10	147-042-8	Silencer	1	40	17E-924-9	Metal Tag (UA90MC)	1	72	990-970-0	O-Ring (SNS-2)	2 ●
11	147-835-8	Filter (K100)	1	41	930-205-0	Driver Rivet	2	73	992-021-0	SU-Ring (Q116)	1 ●
12	143-285-9	Rear Plate	1	42	944-003-0	Back-up Ring (3 x 5 x 1)	1 ●	74	904-190-0	Extension Bar (1/2 x 60)	1
13	143-286-9	Cylinder	1	43	944-203-0	Back-up Ring (3.1 x 5 x 1)	1 ●	75	953-205-0	Allen Head Screw (M5 x 5)	1
14	147-287-8	Rotor	1	44	944-215-0	Back-up Ring (16 x 19.9 x 1.5)	1 ●	76	971-220-0	Pin (3 x 20)	1
15	147-288-8	Blade	9	45	945-117-0	Allen Head Bolt (M5 x 16)	4	77	990-016-0	O-Ring (P-16)	1
16	143-289-9	Front Plate	1	47	948-422-0	Allen Flush Head Screw (M3 x 5)	2	78	909-918-0	Double-Row Socket	1
17	143-036-9	Hammer Casing Connector	1	49	965-011-0	Heli-Sert (M5 x 1.5D)	4	79	911-017-0	Connector Cover	1
18	17E-901-9	Rear Liner Plate	1	50	969-449-0	Pin (G) (3 x 6)	1				
19	18F-902-5	Liner	1	51	970-091-0	Pin (H) (2 x 4.5)	1				
20	17E-319-9	Anvil	1	52	970-205-0	Pin (H) (3 x 7)	4				
21	147-440-9	Driving Blade	2	53	971-125-0	Pin (2 x 25)	1				
22	147-974-8	Roller Pin (2.5 x 30)	2	54	973-006-0	Roll Pin (2 x 6)	1				
23	18F-904-5	Front Liner Plate	1	55	973-014-0	Roll Pin (2 x 14)	1				
24	147-905-8	Liner Casing	1	56	973-068-0	Roll Pin (2.5 x 8)	2				
25	147-906-8	Liner Casing Cover	1	57	973-308-0	Roll Pin (5 x 8)	2				
26	174-907-2	Relief Valve Spindle	1	58	976-006-0	Spring (3 x 5)	1				
27	17E-970-9	Relief Valve	1	59	976-643-0	Spring (7.5 x 9.7)	1				
28	18F-274-8	Spring Holder	1	60	976-794-0	Spring (3.8 x 33) WPC	2 ●				
29	17E-276-9	Pressure Adjusting Valve	1	61	976-991-1	Spring (3.5 x 15.6) (0.65)	1 ●				
30	194-742-3	Oil Plug	1	62	981-002-0	Ball (1/8)	1				

ACCESSORIES

90	910-258-0	Joint Cable Assembly	1
91	939-091-0	Allen Wrench (1.5)	1
93	909-749-0	Solenoid Valve Assembly	1
94	910-263-0	Sensor Cable Assembly (3F5)	1
95	910-633-0	Connector Cover	1

AIMCO also offers a complete line of standard & special adapters, bits, sockets, and extensions

FOOTNOTES

● = Items in Pulse Repair Kit UA-90MC-PRK

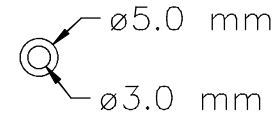
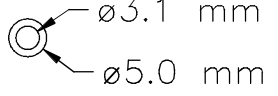
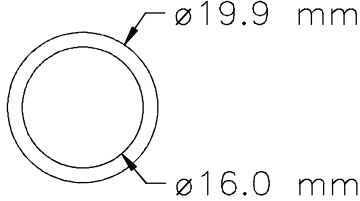
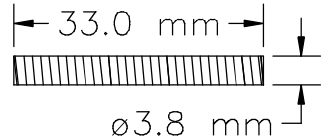
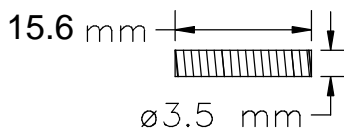
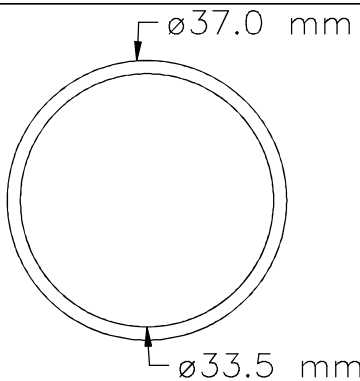
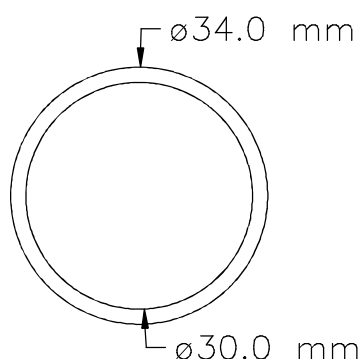


10000 SE PINE
PORTLAND, OR 97216
503-254-6600
FA x 503-255-2615

When ordering spare parts, please specify tool type, part number, and description.

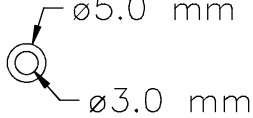
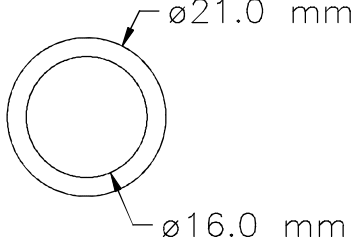
UA-90MC-PRK

(Kit contains following parts)

#/#	Bin Location	Part Number	QTY	Description	Material	Drawing / Scketch
1	PA10	944-003-0	1	Support Ring 3.0x5.0x1	Teflon-White	
2	PA10	944-203-0	1	Back Up Ring 3.1x5x1	Teflon-White	
3	PA10	944-215-0	1	Support Ring 16x19.9x1.5	Teflon-White	
4	PA1J	976-794-0	2	Spring 3.8x33.0	Spring wire ø.50 mm	
5	PA4D	976-991-1	1	Spring 3.5 x 15.6 (0.65) WPC	Spring wire ø.65 mm	
6	PA1A	990-337-0	1	O-Ring (JW1530-27) 33.5x37x1.75	Buna-Black	
7	PA1B	990-924-0	1	O-Ring (SNS-30) 30x34x2	Buna-Black	

UA-90MC-PRK

(Kit contains following parts)

#/#	Bin Location	Part Number	QTY	Description	Material	Drawing / Scketch
8	PA1C	990-970-0	2	O-Ring (SNS-2)	Buna-Black	 <p> $\varnothing 5.0$ mm $\varnothing 3.0$ mm </p>
9	PA1P	992-021-0	1	SU-Ring (Q-16) (NTN) 16x21x2.5	Buna-Black	 <p> $\varnothing 21.0$ mm $\varnothing 16.0$ mm </p>