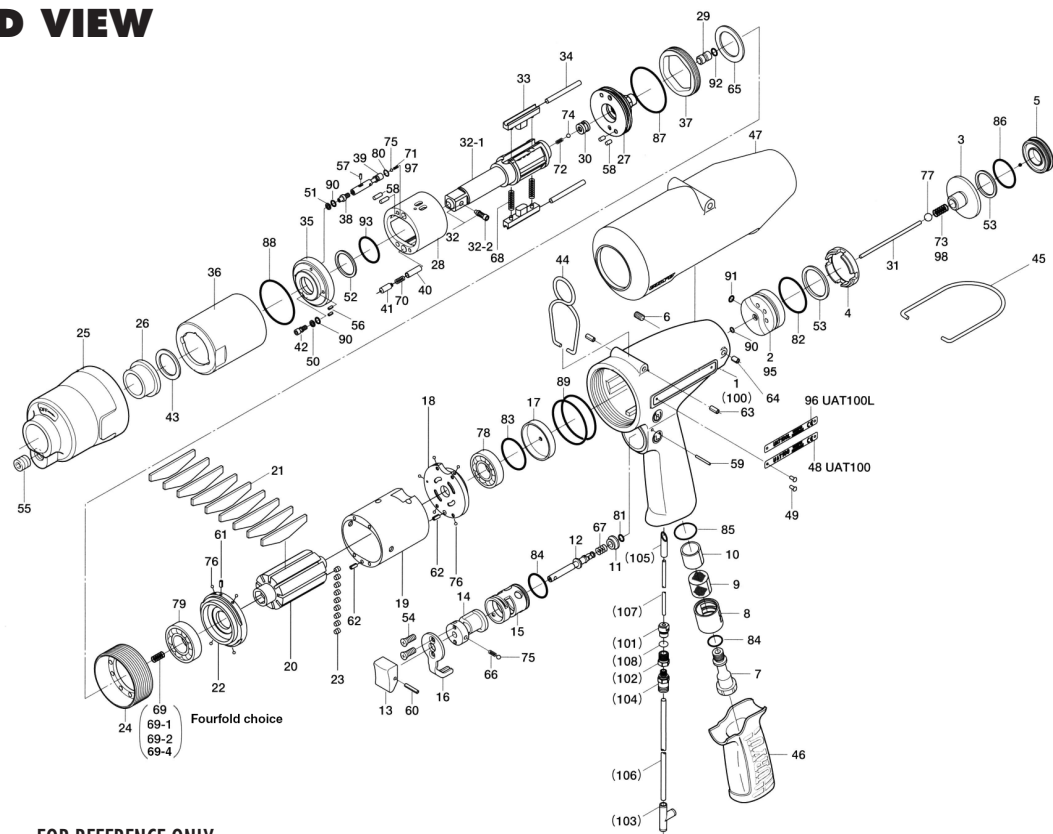


UAT-100 SERIES OIL-PULSE WRENCHES

EXPLODED VIEW



PARTS LIST — FOR REFERENCE ONLY

Index Number	Part Number	Description	Qty.	Index Number	Part Number	Description	Qty.	Index Number	Part Number	Description	Qty.
1	148-025-3	Handle	1	39	148-970-2	Relief Valve	1	74	981-001-0	Ball (3/32)	1
2	148-253-2	Shut-off Valve Bushing	1	40	18F-274-8	Pressure Valve Spring Cover	1	75	981-002-0	Ball (1/8)	2
3	148-254-2	Shut-off Valve	1	41	18F-276-9	Pressure Valve Body	1	76	981-045-0	Ball (1.5)	9
4	147-684-8	Cushion Spacer	1	42	194-742-3	Oil Plug	1	77	981-245-0	Ball (4.5)	1
5	147-019-8	Valve Cover	1	43	147-327-9	Anvil Front Spacer	1	78	982-949-0	Ball Bearing (16001)	1
6	150-108-5	Valve Plug	1	44	174-790-0	Suspension Ring	1	79	982-950-0	Ball Bearing (16002)	1
7	148-091-3	Air Inlet Bushing	1	45	191-790-1	Suspension Ring	1	80	990-320-0	O-Ring (ARP568-003)	1
8	147-780-9	Exhaust Stack	1	46	18C-842-8	Handle Cover	1	81	990-306-0	O-Ring (ARP568-004)	1
9	147-042-8	Silencer	1	47	148-840-2	Casing Cover	1	82	990-331-0	O-Ring (JW1530-21)	1
10	148-835-2	Filter (K50)	1	48	18F-924-8	Name Plate	1	83	990-334-0	O-Ring (JW1530-24)	1
11	147-100-8	Valve	1	49	930-205-0	Driver Rivet (No. 0 x 2.6)	2	84	990-914-0	O-Ring (SNS-16)	2
12	147-104-8	Valve Rod	1	50	944-003-0	Back-up Ring (3 x 5 x 1)	1	85	990-919-0	O-Ring (SNS-22)	1
13	147-107-2	Valve Lever	1	51	944-203-0	Back-up Ring (3.1 x 5 x 1)	1	86	990-923-0	O-Ring (SNS-26)	1
14	147-210-8	Reverse Valve	1	52	944-215-0	Back-up Ring (16 x 19.9 x 1.5)	1	87	990-929-0	O-Ring (SNS-36)	1
15	147-211-8	Reverse Valve Bushing	1	53	944-222-0	Back-up Ring (20 x 27.5 x 1.5)	2	88	990-928-0	O-Ring (SNS-38)	1
16	147-212-8	Reverse Lever	1	54	948-423-0	Allen Flush Head Screw (M3 x 6)	2	89	990-938-0	O-Ring (SNS-48)	2
17	147-291-9	Rear Plate Spacer	1	55	966-099-0	Allen Head Plug (NPT 1/16)	1	90	990-970-0	O-Ring (SNS-2) NOK	3
18	148-285-2	Rear Plate	1	56	969-450-0	Pin (G)(3 x 8)	2	91	990-971-0	O-Ring (SNS-3) NOK	1
19	148-286-2	Cylinder	1	57	970-091-0	Pin (H)(2 x 4.5)	1	92	990-305-0	O-Ring (ARP568-003)	1
20	148-287-2	Rotor	1	58	970-205-0	Pin (H)(3 x 7)	4	93	992-021-0	SU-Ring (Q16) NTN	1
21	148-288-2	Blade	9	59	971-125-0	Pin (2 x 25)	1	PARTS FOR UAT-100L			
22	148-289-2	Front Plate	1	60	973-014-0	Roll Pin (2 x 14)	1	95	148-253-3	Shut-off Valve Bushing	1
23	148-064-2	Plug	9	61	973-006-0	Roll Pin (2 x 6)	1	96	18F-924-9	Name Plate	1
24	148-036-2	Hammer Casing Connector	1	62	973-068-0	Roll Pin (2.5 x 8)	2	97	976-974-0	Spring (2.9 x 8.4) (0.4)	1
25	148-439-2	Front Casing	1	63	973-308-0	Roll Pin (5 x 8)	2	98	976-816-0	Spring (4.6 x 12)	1
26	147-328-8	Anvil Bushing	1	64	973-307-0	Roll Pin (5 x 6)	2	PARTS FOR (TM)-TYPE			
27	18F-901-9	Rear Liner Plate	1	65	975-780-0	Adjusting Spacer (21 x 13 x 1)	1	100	852-572-1	Handle	1
28	18F-902-8	Liner	1	66	976-006-0	Spring (3 x 5)	1	102	1/16BK1-10F	Barb 10/32 x 1/16 NPT x 1/16	1
29	145-546-6	Piston	1	67	976-643-0	Spring (7.5 x 9.7)	1	103	909-442-0	Quick Exhaust (AQ240F-04-00)	1
30	130-929-4	Check Valve Cover	1	68	976-783-0	Spring (4.3 x 36) WPC	2	104	PQ-MCOSN	5/32 x 10/32 Fitting	1
31	148-130-2	Operating Rod (2.1 x 65.9)	1	69	976-662-0	Spring (3.3 x 18)(0.45) Middle Weak	1	106	935-350-0	Polyurethane Hose (F-1504)	1
32	891-562-1	Anvil Assembly	1	69-1	976-771-0	Spring (3.3 x 16.5) (0.5) Strong	1	107	935-358-0	Polyurethane Hose (TU-0212)	1
32-1	148-319-3	Anvil	1	69-2	976-851-0	Spring (3.3 x 17) (0.45) Weak	1	108	990-320-0	O-Ring (ARP568-003)	1
32-2	891-304-1	Socket Pin Assembly	1	69-3	976-967-0	Spring (3.3 x 17.7) (0.45) Standard	1	ACCESSORIES			
33	148-440-2	Driving Blade	2	69-4	976-968-0	Spring (3.3 x 18.2) (0.45) Middle Strong	1	111	939-105-0	Allen Wrench (4)	1
34	148-974-2	Roller (3 x 35)	2	70	976-824-0	Spring (3.3 x 18)	1	112	940-114-0	Air Hose Nipple (NPT1/4 x 3/8)	1
35	18F-904-8	Front Liner Plate	1	71	976-998-0	Spring (2.9 x 7.5) (0.45) n = 7.5	1	FOOTNOTES			
36	148-905-2	Liner Casing	1	72	976-962-0	Spring (2.3 x 5.8)	1	●	= Items in Pulse Repair Kit UAT-100-PRK		
37	148-906-2	Liner Casing Cover	1	73	976-813-0	Spring (4.5 x 12)	1	■	= Items in Repair Kit UAT-100-RK		
38	174-907-2	Relief Valve Spindle	1								



**10000 SE PINE
PORTLAND, OR 97216
503-254-6600
FAX 503-255-2615**

When ordering spare parts, please specify
tool type, part number, and description.

FOOTNOTES

- = Items in Pulse Repair Kit UAT-100-PRK
- = Items in Repair Kit UAT-100-RK