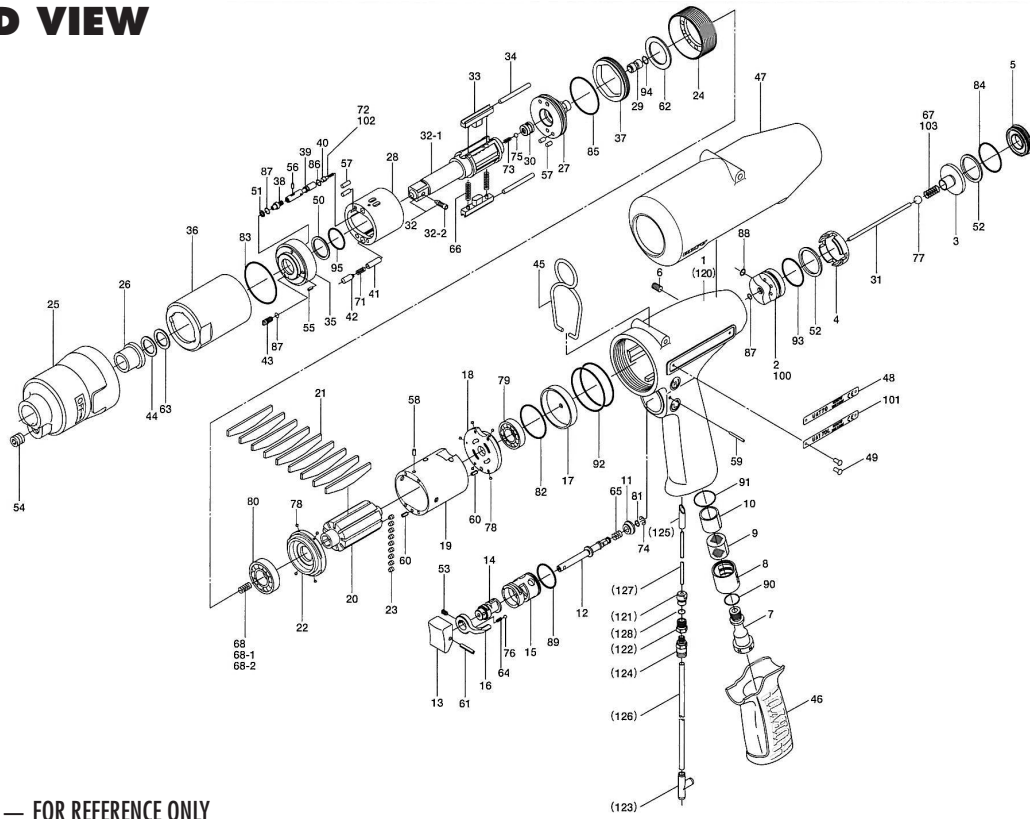


# UAT-70 SERIES OIL-PULSE WRENCHES

## EXPLODED VIEW



## PARTS LIST — FOR REFERENCE ONLY

Index Number	Part Number	Description	Qty.	Index Number	Part Number	Description	Qty.	Index Number	Part Number	Description	Qty.
1	147-025-7	Handle	1	39	18E-970-3	Relief Valve	1	77	981-003-0	Ball (5/32)	1
2	147-253-6	Shut-off Valve Bushing	1	40	144-270-0	Pressure Valve	1	78	981-045-0	Ball (1.5)	9
3	147-254-6	Shut-off Valve	1	41	18F-274-2	Pressure Valve Spring Collar	1	79	982-014-0	Ball Bearing (607)	1 ■
4	147-684-6	Cushion Spacer	1	42	080-276-6	Pressure Valve Body	1	80	982-902-0	Ball Bearing (6901)	1 ■
5	147-019-6	Valve Cover	1	43	194-742-0	Oil Plug	1	81	990-306-0	O-Ring (ARPS68-004)	1
6	150-108-5	Valve Plug	1	44	178-327-0	Anvil Front Spacer	1	82	990-327-0	O-Ring (JW1530-18)	1
7	147-091-2	Air Inlet Bushing	1	45	174-790-0	Suspension Ring	1	83	990-334-0	O-Ring (JW-1530-24)	1 ●
8	147-780-3	Exhaust Stack	1	46	18C-842-8	Handle Cover	1	84	990-918-0	O-Ring (SNS-20)	1
9	147-042-2	Silencer	1	47	147-840-7	Casing Cover	1	85	990-923-0	O-Ring (SNS-26)	1 ●
10	147-835-3	Filter (K200)	1 ■	48	18E-924-3	Name Plate	1	86	990-621-0	O-Ring (3.8 x 1.8 x 1.0)	1
11	147-100-3	Valve	1	49	930-205-0	Driver Rivet (No.0 x 2.6)	2	87	990-970-0	O-Ring (SNS-2)	3 ●
12	142-104-6	Valve Rod	1	50	944-013-0	Back-up Ring (P-12)	1 ●	88	990-901-0	O-Ring (SNS-3)	1
13	147-107-2	Valve Lever	1	51	944-203-0	Back-up Ring (3.1 x 5 x 1)	1 ●	89	990-912-0	O-Ring (SNS-14)	1
14	147-210-2	Reverse Valve	1	52	944-220-0	Back-up Ring (1.6 x 22.5 x 1.5)	2	90	990-914-0	O-Ring (SNS-16)	1
15	147-211-2	Reverse Valve Bushing	1	53	952-106-0	Allen Head Dog Point Screw (M4 x 6)	1	91	990-916-0	O-Ring (SNS-18)	1
16	480-212-8	Reverse Lever	1	54	966-099-0	Allen Head Plug (NPT1/16)	1	92	990-929-0	O-Ring (SNS-36)	2 ■
17	145-291-7	Rear Plate Spacer	1	55	969-449-0	Pin (G) (3 x 6)	1	93	990-979-0	O-Ring (SNS-20)	1
18	147-285-6	Rear Plate	1	56	970-013-0	Pin (H) (1.5 x 4)	1	94	990-305-0	O-Ring (APR-568-003KS)	1 ●
19	147-286-6	Cylinder	1	57	970-204-0	Pin (H) (3 x 6)	4	95	992-020-0	SU Ring Q12 (NTN)	1 ●
20	147-287-6	Rotor	1	58	971-102-0	Pin (2 x 3.8)	1	<b>PARTS FOR UAT-70L</b>			
21	147-288-6	Blade	9 ■	59	971-123-0	Pin (2 x 23)	1	100	147-253-7	Shut-off Valve Bushing	1
22	147-289-6	Front Plate	1	60	973-008-0	Roll Pin (2 x 8)	2	101	18E-924-8	Name Plate	1
23	147-064-6	Plug	9	61	973-014-0	Roll Pin (2 x 14)	1	102	976-836-0	Spring (2.85 x 7.3)	1
24	147-036-6	Hammer Casing Connector	1	62	975-752-0	Adjusting Spacer (15 x 10 x t)	1	103	977-045-0	Cone Spring (4.0 x 4.6 x 9)	1
25	147-439-6	Front Casing	1	63	975-754-0	Adjusting Spacer (17 x 12.5 x t)	1	<b>PARTS FOR (TM)-TYPE</b>			
26	190-328-6	Anvil Bushing	1	64	976-006-0	Spring (3 x 5)	1	120	852-587-1	Handle	1
27	18E-901-3	Rear Liner Plate	1	65	976-457-0	Spring (7 x 12)	1	121	1/16BK1-10F	Barb 10/32 x 1/16npt x 1/16	1
28	18E-902-3	Liner	1	66	976-788-0	Spring (3.5 x 25)	2 ●	122	PQ-MC05N	5/32 x 10/32 Fitting	1
29	145-546-6	Piston	1	67	977-056-0	Spring (4.1 x 4.7 x 9.4) (0.45) WPC	1	123	909-442-0	Quick Exhaust (AQ240F-04-00)	1
30	145-929-6	Check Valve Cover	1	68	976-650-0	Spring (3.3 x 16)	1	126	935-350-0	Polyurethane Hose (F1504)	1
31	147-130-6	Operating Rod	1	68-1	976-688-0	Spring (3.3 x 17.5)	1	127	935-358-0	Polyurethane Hose (TU-0212)	1
32	891-550-1	Anvil Assembly	1	68-2	976-857-0	Spring (3.3 x 17)	1	<b>ACCESSORIES</b>			
32-1	18E-319-3	Anvil	1	71	976-877-0	Spring (3 x 14)	1 ●	130	939-091-0	Allen Wrench (1.5)	1
32-2	891-300-1	Socket Pin Assembly	1	72	976-677-0	Spring (2.8 x 7)	1 ●	131	939-105-0	Allen Wrench (4)	1
33	147-440-6	Driving Blade	2	73	976-626-0	Spring (2.4 x 6)	1 ●	132	940-114-0	Air Hose Nipple (NPT1/4 x 3/8)	1
34	147-974-6	Roller (2.5 x 28)	2	74	979-405-0	Outer Snap Ring (E2.5)	1	134	909-449-0	Speed Controller for TM-type	1
35	18E-904-3	Front Liner Plate	1	75	981-001-0	Ball (3/32)	1				
36	147-905-6	Liner Casing	1	76	981-002-0	Ball (1/8)	1				
37	147-906-6	Liner Casing Cover	1								
38	174-907-2	Relief Valve Spindle	1								

### FOOTNOTES

- = Items in Pulse Repair Kit UAT-70-PRK
- = Items in Pulse Repair Kit UAT-70-RK



10000 SE PINE  
PORTLAND, OR 97216  
503-254-6600  
FAX 503-255-2615

When ordering spare parts, please specify  
tool type, part number, and description.