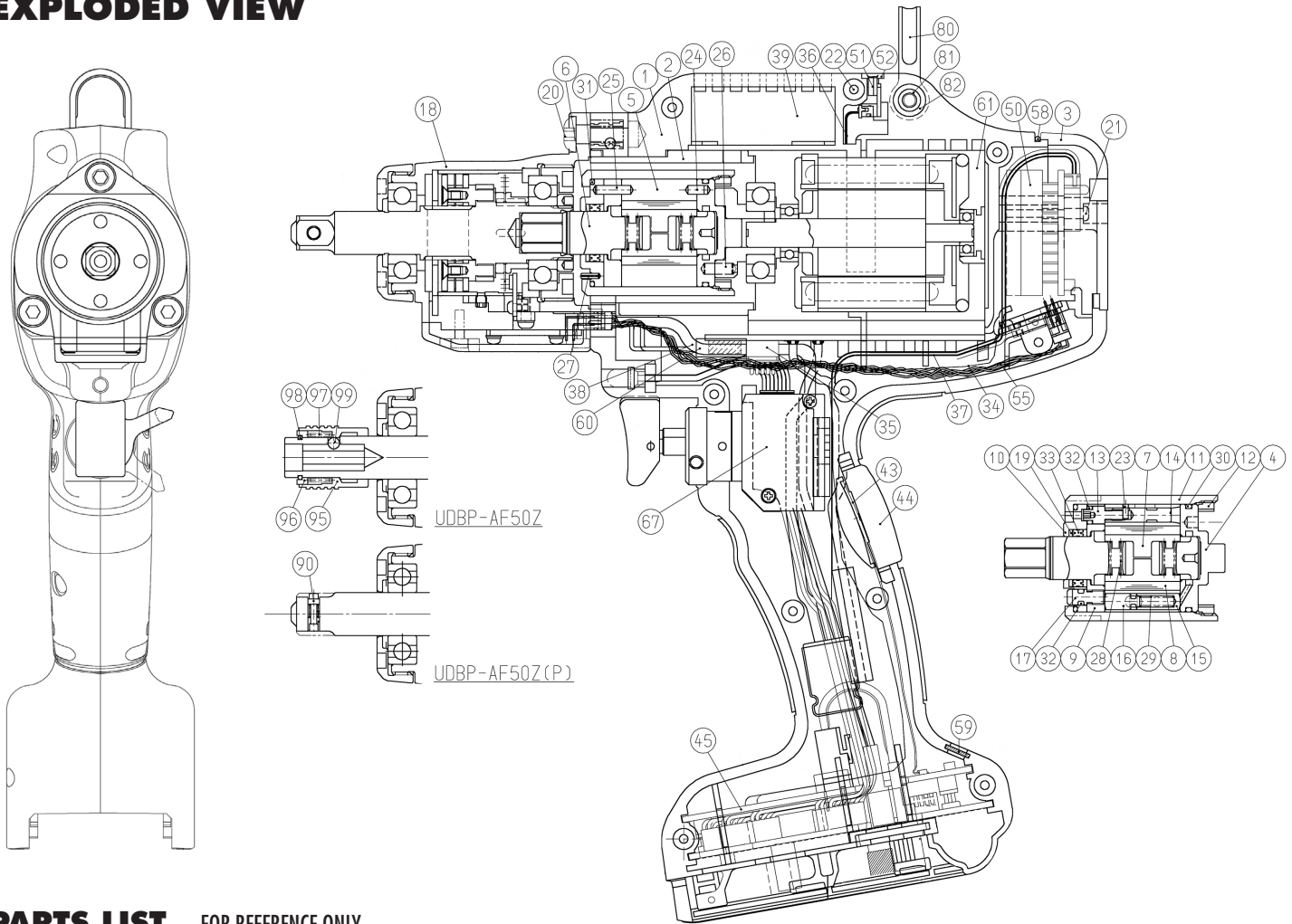


# UDBP-AF50Z(P) TRANSDUCERIZED BATTERY PULSE TOOL WITH ZIGBEE FEATURE

## EXPLODED VIEW



## PARTS LIST — FOR REFERENCE ONLY

Index Number	Part Number	Description	Qty.	Index Number	Part Number	Description	Qty.	Index Number	Part Number	Description	Qty.
1	09A-025-4	Handle (R & L)	1	24	970-130-0	Pin (H) 2.45 x 4.5	2	53	910-380-0	Sensor Relay Board	1
2	09A-255-4	Regulator Tube	1	25	970-131-0	Pin (H) 2.45 x 9.5	2	58	910-390-0	Elastomer Tube 155 mm	1
3	09B-012-4	Head Cover	1	26	972-089-0	Roller Pin 3 x 8	4	59	910-404-0	Power Indicator Cover	1
4	09A-901-4	Rear Liner Plate	1	27	973-040-0	Roll Pin 1.5 x 5	2	60	910-379-0	Motor Connector Cover	1
5	18B-902-2	Liner	1	28	976-791-0	Spring 3.3 x 21 (0.4)WPC	2	61	910-677-0	Motor fitted with LED (L = 30)	1
6	137-319-4	Anvil	1	29	976-778-0	Spring 3 x 12.1 (0.45)	1	67	09B-174-4	Switch Assembly	1
7	145-440-0	Driving Blade	2	30	990-329-0	O-Ring JW1530-19	1	90	891-300-1	Socket Retainer Pin	1
8	145-974-0	Roller 2.5 x 21	2	31	990-605-0	O-Ring 25 x 1.45	1	95	011-351-1	Bit Sleeve (1/8)	1
9	18C-973-8	Liner Casing Spacer	1	32	990-970-0	O-Ring SNS-2 (NOK)	2	96	011-352-1	Bit Spacer	1
10	145-904-6	Front Liner Plate	1	33	991-030-0	X-Ring X12	1	97	976-327-0	Spring (13.5 x 11) (0.9)	1
11	17C-905-4	Liner Casing	1	34	910-439-0	Sensor Cable Assembly (FFC)	1	98	978-117-0	Snap Ring (11.7 x 1.0)	1
12	145-906-6	Liner Casing Cover	1	35	910-440-0	Motor Transmission Cable Assembly	1	99	981-002-0	Ball (1/8)	1
13	145-907-6	Relief Valve Spindle	1	36	910-444-0	Transmission Cable Assembly RS232C	1	<b>ACCESSORIES</b>			
14	17C-970-4	Relief Valve	1	37	910-441-0	ZigBee Cable Assembly	1	18-1	863-990-1	Casing Cover	1
15	080-274-6	Pressure Regulator Valve Body Spring Holder	1	38	910-442-0	Coaxial Cable	1	75	939-091-0	Allen Spanner 1.5 (80 x 20)	1
16	17C-276-4	Pressure Regulator Valve Body	1	39	910-385-0	Fan Assembly	1	79	863-993-1	Battery Protector	1
17	194-742-0	Oil Plug	1	43	910-384-0	Grip Switch L = 210 mm	1	<b>OPTIONS</b>			
18	09A-975-4	Sensor Casing Assembly (ADO2S)	1	44	910-409-0	Grip Switch Plate	1	Suspension			
19	944-213-0	Supporting Ring 12 x 16 x 1	1	45	910-369-0	Controller Board Assembly	1	80	136-790-7	Suspension Ring	1
20	945-980-0	Bolt M5 x 12 (R2.5)	3	50	910-374-0	ZigBee Board Assembly	1	81	136-791-7	Suspension Plate	1
21	957-042-0	Screw M2.5 x 16	2	51	910-377-0	Transmission Board Assembly RS232C Output	1	82	945-941-0	Bolt M4 x 5	2
22	963-253-0	Tapping Screw 3 x 16	10	52	910-378-0	Transmission Board Cover	1				
23	970-013-0	Pin (H) 1.5 x 4	1								

## FOOTNOTES



10000 SE PINE  
PORTLAND, OR 97216  
503-254-6600  
FAX 503-255-2615

When ordering spare parts, please specify tool type, part number, and description.