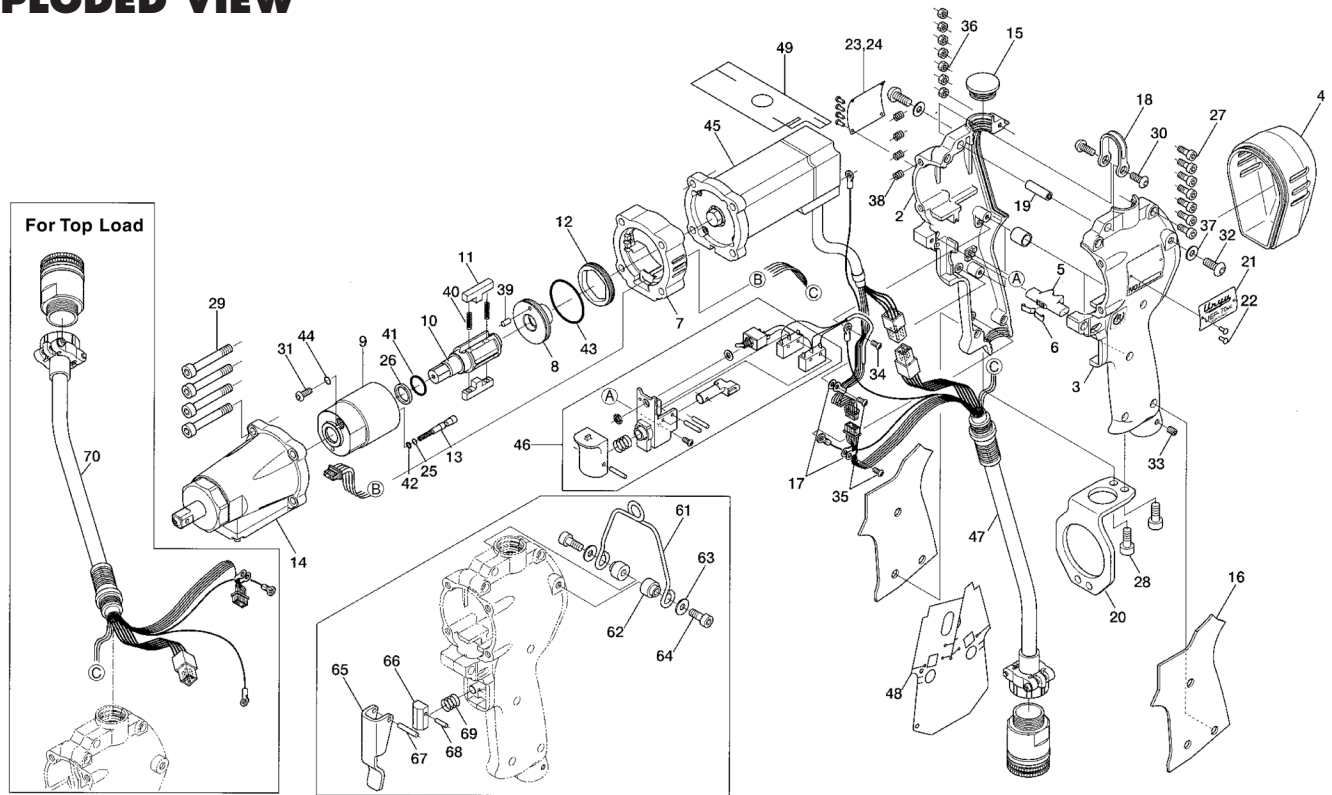


# UEP-70MC SERIES ELECTRIC OIL-PULSE TOOLS

## EXPLODED VIEW



## PARTS LIST — FOR REFERENCE ONLY

Index Number	Part Number	Description	Qty.	Index Number	Part Number	Description	Qty.	Index Number	Part Number	Description	Qty.
1	136-004-9	Handle Assembly	1	30	945-941-0	Hexagon Round Head Bolt (M4 x 5)	2	<b>PARTS FOR 115V</b>			
2	136-025-9	Handle Set	1 ●	31	945-942-0	Hexagon Round Head Bolt (M4 x 6)	1	53	910-946-0	Driver Box UEPD-71A-UL	1
3	136-083-9	Handle Supporter	1 ●	32	945-949-0	Hexagon Round Head Bolt (M5 x 6)	2	54	910-217-0	Power Cable (115V)	1
4	136-012-4	Head Cover	1	33	954-105-0	Allen Head Cone Point Screw (M4 x 5)	1	<b>ACCESSORIES</b>			
5	136-212-8	Reverse Lever	1	34	957-106-0	Cross Pan Head Screw (M4 x 6)	1	55	910-532-0	Coil Cable Assembly	1
6	136-217-7	Plate Spring	1	35	957-215-0	Cross Pan Head Screw (M3 x 5)	2	56	910-546-0	Joint Cable Assembly (3 M)	1
7	137-027-7	Separator	1	36	960-020-0	Hexagon Nut (1-M3)	7 ●	57	910-547-0	Joint Cable Assembly (5 M)	1
8	137-901-7	Liner Rear Plate	1	37	961-012-0	Flat Washer (5 MM)	2	58	910-548-0	Joint Cable Assembly (10 M)	1
9	143-902-8	Liner	1	38	965-011-0	Heli-Sert (M5 x 1.5D)	4	59	910-623-0	Sensor Cable Assembly (CE)	1
10	137-319-7	Anvil	1	39	970-147-0	Pin (H)(2.5 x 5)	1	60	910-632-0	Connector Cover	1
11	194-440-0	Driving Blade	2	40	976-793-0	Spring (3.7 x 29)(0.5)	2	<b>OPTION: 851-109-1 SUSPENSION RING ASSEMBLY</b>			
12	143-906-8	Liner Casing Setter	1	41	990-152-0	O-Ring (P12)(NTN)	1	61	851-110-1	Suspension Ring	1
13	143-970-8	Relief Valve	1	42	990-320-0	O-Ring (ARP-568-003)	1	62	193-791-6	Suspension Receiver	2
14	851-688-1	Sensor Casing Assembly (D04S)	1	43	990-917-0	O-Ring (SNS-24)	1	63	193-792-6	Suspension Plate	2
15	136-064-7	Plug	1	44	990-971-0	O-Ring (SNS-3)(NOK)	1	64	945-112-0	Allen Head Bolt (M5 x 12)	2
16	136-842-0	Handle Cover	1	45	910-507-0	Electric Motor	1	<b>OPTION: 851-104-1 LEVER ASSEMBLY</b>			
17	136-670-7	Band	2	46	910-602-0	Starting Switch Assembly	1	65	163-107-6	Valve Lever	1
18	136-790-7	Suspension Bail	1	47	910-526-0	Handle Cable Assembly (CE 1.8)	1	66	850-952-1	Valve Rod Cap	1
19	136-791-7	Suspension Bail Base	1	48	910-660-0	Insulation Sheet (Grip)	1	67	970-222-0	Pin (H)(3 x 22)	1
20	136-794-7	Suspension Plate	1	49	910-661-0	Insulation Sheet (Motor 70)	1	68	976-120-0	Pin (H)(2 x 16)	1
21	137-924-7	Name Plate	1	50	909-697-0	Shrink Tube (9 x 10)	4	69	976-230-0	Spring (9.4 x 9)(0.6)	1
22	930-205-0	Driver Rivet (No.0 x 2.6)	6	<b>PARTS FOR 230V</b>				<b>OPTION: FOR TOP LOAD</b>			
23	136-993-9	Name Plate (Spec.)(230V)	1	51	910-842-0	Driver Box UEPD-71E-CE	1	70	910-528-0	Handle Cable Assembly (CE)	1
24	137-993-7	Name Plate (Spec.)(115V)	1	52	910-218-0	Power Cable (230V)	1				
25	944-001-0	Supporting Ring (2.1 x 4 x 1)	1								
26	944-212-0	Supporting Ring (12 x 16 x 1.5)	1								
27	945-016-0	Allen Head Bolt (M3 x 15)	7 ●								
28	945-112-0	Allen Head Bolt (M5 x 12)	2								
29	945-140-0	Allen Head Bolt (M5 x 40)	4								



10000 SE PINE  
PORTLAND, OR 97216  
503-254-6600  
FAX 503-255-2615

When ordering spare parts, please specify tool type, part number, and description.

### FOOTNOTES

● = Handle Assembly Components