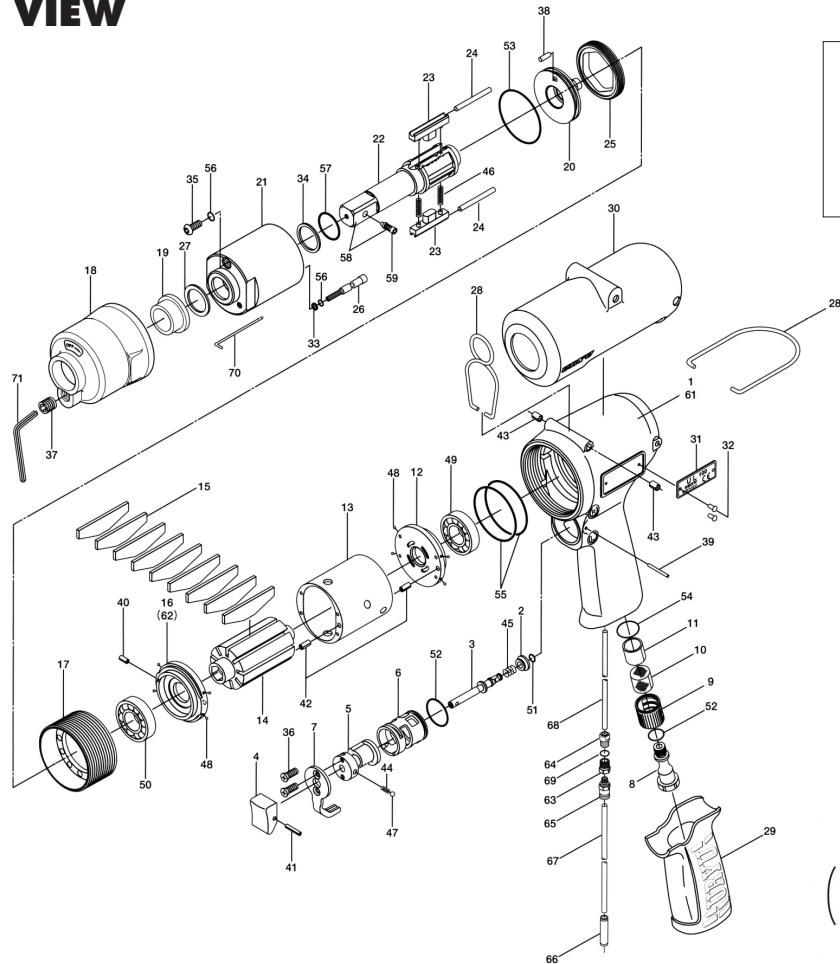
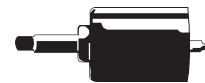


# UL-100 SERIES OIL-PULSE WRENCHES

## EXPLODED VIEW



Liner Casing Assembly (P)



Part #891-483-1

155-984-0 Handle Assembly

(#1, #2, #3, #4, #5, #6, #7, #8, #36, #39, #41, #43, #44, #45, #47, #51, #52,)

## PARTS LIST — FOR REFERENCE ONLY

Index Number	Part Number	Description	Qty.	Index Number	Part Number	Description	Qty.	Index Number	Part Number	Description	Qty.
1	155-025-0	Handle	1 ■	26	155-970-0	Relief Valve	1	47	981-002-0	Ball (1/8)	1 ■
2	147-100-8	Valve	1 ■	27	147-327-9	Anvil Front Spacer	1	48	981-045-0	Ball (1.5 mm)	8
3	147-104-8	Valve Rod	1 ■	28	174-790-0	Suspension Ring	1	49	982-949-0	Ball Bearing (16001)	1
4	147-107-2	Valve Lever	1 ■	28-1	191-790-1	Suspension Ring	1	50	982-950-0	Ball Bearing (16002)	1
5	147-210-8	Reverse Valve	1 ■	29	147-842-2	Handle Cover	1	51	990-306-0	O-Ring (ARP-568-004) (H)	1 ■
6	147-211-8	Reverse Valve Bushing	1 ■	30	155-840-0	Casing Protector	1	52	990-914-0	O-Ring (SNS-16)	2 ■
7	147-212-8	Reverse Lever	1 ■	31	155-924-0	Name Plate	1	53	990-926-0	O-Ring (SNS-35)	1 ●
8	148-091-3	Air Inlet Bushing	1 ■	32	930-205-0	Driver Rivet (No.0 x 2.6)	2	54	990-919-0	O-Ring (SNS-22)	1
9	147-780-9	Exhaust Stack	1	33	944-003-0	Supporting Ring (3 x 5 x 1)	1 ●	55	990-938-0	O-Ring (SNS-48)	2
10	147-042-8	Silencer 0.02 x 30	1	34	944-215-0	Supporting Ring (16 x 19.9 x 1.5)	1 ●	56	990-971-0	O-Ring (SNS-3) (NOK)	2 ●
	18F-042-9	Silencer 0.18 x 60	>either/or	35	945-942-0	Hexagon Round Head Bolt (M4 x 6)	1	57	992-021-0	SU-Ring (Q16) (NTN)	1 ●
11	148-835-2	Filter (K50)	1	36	948-423-0	Hexagon Round Head Bolt (M3 x 6)	2 ■	58	891-566-1	Anvil Assembly (P)	1
12	155-285-0	Rear Plate	1	37	966-099-0	Allen Head Plug (1/16GM) (NPT1/16GDL)	1	59	891-304-1	Socket Pin Assembly (1/2)	1
13	155-286-0	Cylinder	1	38	970-204-0	Pin(H) (3 x 6)	1	<b>PARTS FOR (TM) - TYPE</b>			
14	155-287-0	Rotor	1	39	971-125-0	Pin (2 x 25)	1 ■	61	852-527-1	Handle	1
15	148-288-2	Blade (PC)	9	40	973-006-0	Roll Pin (2 x 6)	1	62	852-532-1	Front Plate	1
16	148-289-2	Front Plate	1	41	973-014-0	Roll Pin (2 x 14)	1 ■	63	850-610-1	Connecting Screw	1
17	155-036-0	Hammer Casing Connector	1	42	973-068-0	Roll Pin (2.5 x 8)	2	66	909-442-0	Quick Exhaust Connector	1
18	155-439-0	Front Casing	1	43	973-308-0	Roll Pin (5 x 8)	2 ■	67	935-350-0	Polyurethane Hose (F1504)	1
19	147-328-8	Anvil Bushing	1	44	976-006-0	Spring (3 x 5) (0.4)	1 ■	68	935-240-0	Polyurethane Hose	1
20	155-901-0	Liner Rear Plate	1	45	976-643-0	Spring (7.5 x 9.7) (0.9)	1 ■	<b>ACCESSORIES</b>			
21	155-902-0	Liner	1	46	976-783-0	Spring (4.3 x 36) (0.55) WPC	2 ●	70	939-091-0	Allen Wrench (1.5)	1
22	155-319-0	Anvil	1					71	939-105-0	Allen Wrench (4)	1
23	148-440-2	Driving Blade	2					<b>FOOTNOTES</b>			
24	155-974-0	Roller (3 x 35) (C)	2					● = Items in Pulse Repair Kit UL-100-PRK			
25	148-906-2	Liner Casing Cover	1					■ = Components in Handle Assembly 155-984-0			



10000 SE PINE  
PORTLAND, OR 97216  
503-254-6600  
FAX 503-255-2615

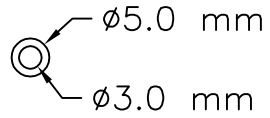
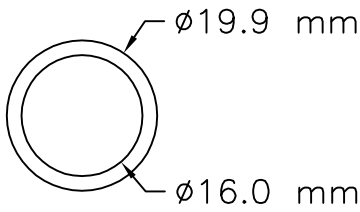
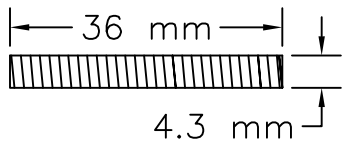
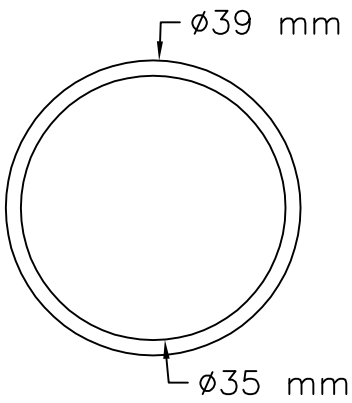
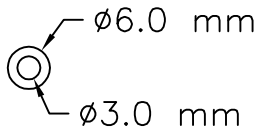
When ordering spare parts, please specify tool type, part number, and description.

### FOOTNOTES

- = Items in Pulse Repair Kit UL-100-PRK
- = Components in Handle Assembly 155-984-0

# UL-100-PRK

(Kit contains following parts)

#/#	Bin Location	Part Number	QTY	Description	Material	Drawing / Scketch
1	PA10	944-003-0	1	Support Ring 3.0x5.0x1	Teflon-White	
2	PA10	944-215-0	1	Support Ring 16x19.9x1.5	Teflon-White	
3	PA1I	976-783-0	2	Spring 4.3x36	Spring wire ø.55 mm	
4	PA1B	990-926-0	1	O-Ring (SNS-35) 35x39x2	Buna-Black	
5	PA1C	990-971-0	2	O-Ring (SNS-3) (NOK)	Buna-Black	
6	PA10	992-021-0	1	SU-Ring (Q-16) (NTN) 16x21x2.5	Buna-Black	