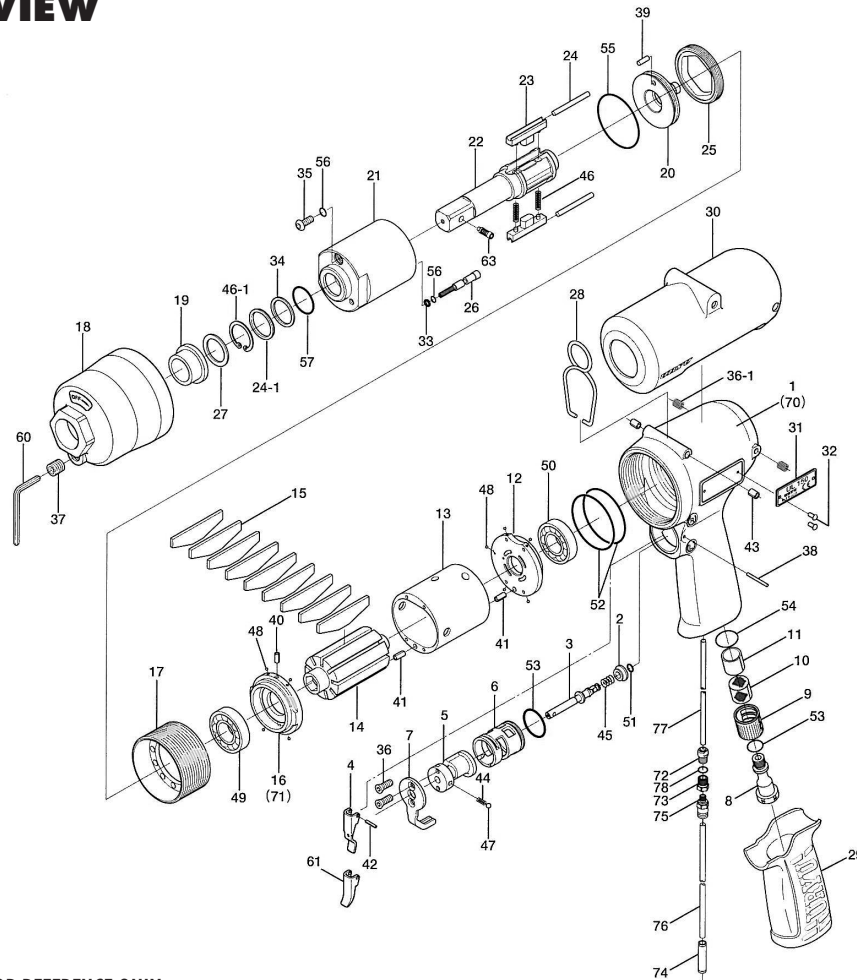


UL-150 SERIES OIL-PULSE WRENCHES

EXPLODED VIEW



PARTS LIST — FOR REFERENCE ONLY

Index Number	Part Number	Description	Qty.	Index Number	Part Number	Description	Qty.	Index Number	Part Number	Description	Qty.
1	114-025-8	Handle	1	27	130-327-5	Anvil Front Spacer	1	51	990-306-0	O-Ring (ARP-568-004)	1
2	130-100-2	Valve	1	28	174-790-0	Suspension Ring	1	52	990-316-0	O-Ring (ARP-568-035)	2
3	130-104-2	Valve Rod	1	29	114-842-8	Handle Cover	1	53	990-916-0	O-Ring (SNS-18)	2
4	130-107-2	Valve Lever	1	30	114-840-8	Casing Protector	1	54	990-921-0	O-Ring (SNS-22.4)	1
5	130-210-2	Reverse Valve	1	31	114-924-8	Name Plate	1	55	990-936-0	O-Ring (SNS-45)	1
6	130-211-2	Reverse Valve Bushing	1	32	930-205-0	Driver Rivet (No.0 x 2.6)	2	56	990-971-0	O-Ring (SNS-3)	2
7	130-212-2	Reverse Lever	1	33	944-003-0	Supporting Ring (3 x 5 x 1)	1	57	990-170-0	O-Ring (ARP-568-120)	1
8	130-091-2	Air Inlet Bushing	1	34	944-225-0	Supporting Ring (25.2 x 29.4 x 15)	1	PARTS FOR (TM) TYPE			
9	130-780-2	Exhaust Stack	1	35	945-942-0	Hexagon R.H. Bolt (M4 x 6)	1	70	851-968-1	Handle	1
10	130-042-2	Silencer	1	36	948-423-0	Allen F.H. Screw (M3 x 6)	2	71	851-969-1	Front Plate	1
11	130-835-2	Filter (K100)	1	36-1	965-010-0	Heli-Sert (M5 x 1D)	2	72	1/16BK1-10F	Barb 10/32 x 1/16 npt x 1/16	1
12	130-285-4	Rear Plate	1	37	966-099-0	Allen Head Plug (NPT1/16)	1	73	PQ-MC05N	5/32 x 10/32 Fitting	1
13	114-286-8	Cylinder	1	38	971-126-0	Pin (2 x 26)	1	74	909-442-0	Quick Exhaust Connector (AQ240F-04-00)	1
14	114-287-8	Rotor	1	39	970-308-0	Pin (H) (4 x 8)	1	76	935-350-0	Polyurethane Hose (F-1504)	1
15	130-288-2	Blade	9	40	973-066-0	Roll Pin (2.5 x 6)	1	77	935-358-0	Polyurethane Hose (TU-0212)	1
16	114-289-8	Front Plate	1	41	973-212-0	Roll Pin (4 x 12)	2	ACCESSORIES			
17	114-036-8	Hammer Casing Connector	1	42	973-120-0	Roll Pin (3 x 20)	1	59	939-091-0	Allen Wrench (1.5)	1
18	114-439-8	Front Casing	1	43	973-308-0	Roll Pin (5 x 8)	2	60	939-105-0	Allen Wrench (4)	1
19	163-328-4	Anvil Bushing	1	44	976-006-0	Spring (3 x 5)	1	Optional			
20	114-901-8	Rear Liner Plate	1	45	976-643-0	Spring (7.5 x 9.7)	1	61	130-107-4	Valve Lever	1
21	114-902-8	Liner	1	46	976-808-0	Spring (4.4 x 48)	2				
22	114-319-8	Anvil	1	46-1	979-207-0	Snap Ring (30)	1				
23	130-440-4	Driving Blade	2	47	981-002-0	Ball (1/8)	1				
24	130-974-2	Roller	2	48	981-045-0	Ball (1.5)	9				
24-1	163-807-5	Spacer	1	49	982-905-0	Ball Bearing (6904)	1				
25	130-906-4	Liner Casing Cover	1	50	982-951-0	Ball Bearing (16003)	1				
26	155-970-0	Relief Valve	1								

FOOTNOTES



10000 SE PINE
PORTLAND, OR 97216
503-254-6600
FAX 503-255-2615

When ordering spare parts, please specify tool type, part number, and description.