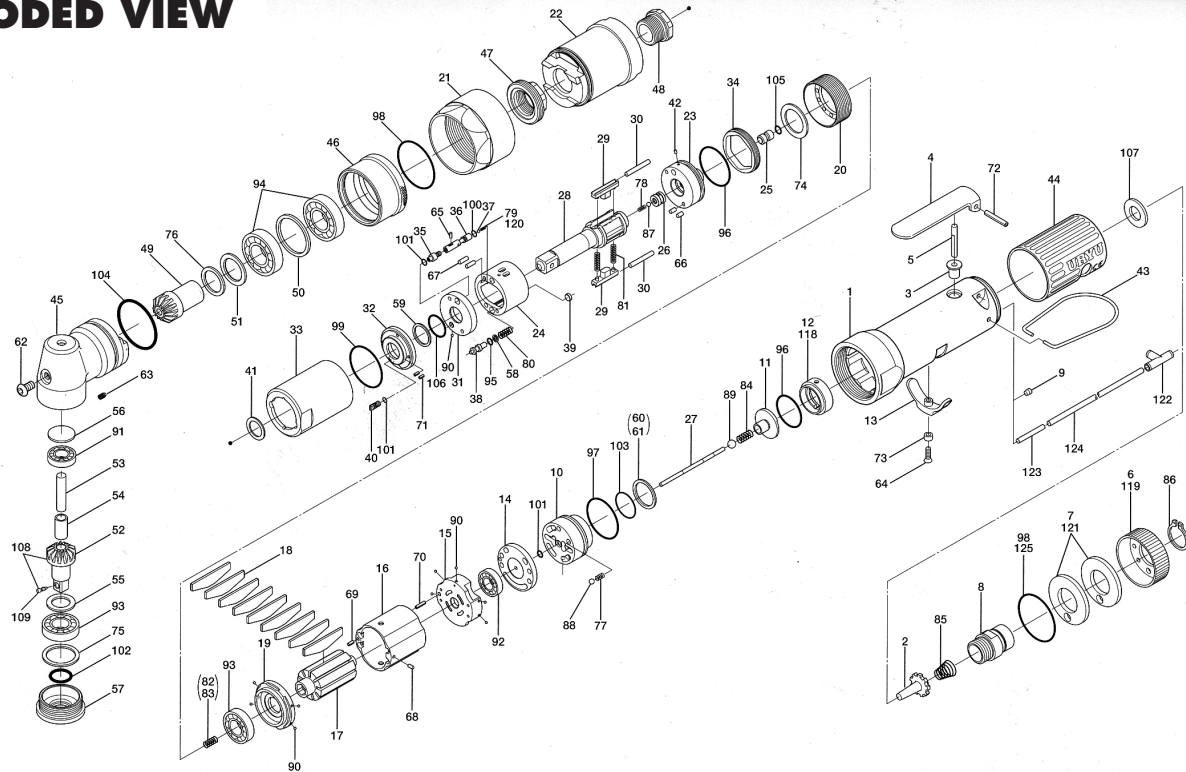


ULT-50C SERIES OIL-PULSE WRENCHES

EXPLODED VIEW



PARTS LIST — FOR REFERENCE ONLY

Index Number	Part Number	Description	Qty.	Index Number	Part Number	Description	Qty.	Index Number	Part Number	Description	Qty.
1	127-025-5	Casing	1	44	128-842-8	Handle Protector	1	85	977-227-0	Cone Spring (9 x 12 x 25) (0.8)	1
2	259-100-0	Valve	1	45	127-441-3	Angle Casing	1	86	979-358-0	Inner Snap Ring (ISTW-17)	1
3	161-103-3	Valve Rod Bushing	1	46	127-382-3	Hammer Casing Nut	1	87	981-001-0	Ball (3/32)	1
4	196-107-7	Valve Lever	1	47	127-797-3	Ball Bearing Setting Spindle	1	88	981-002-0	Ball (1/8)	1
5	128-104-8	Valve Rod	1	48	127-799-3	Ball Bearing Setting Spindle Nut	1	89	981-003-0	Ball (5/32)	1
6	128-782-8	Exhaust Cover	1	49	127-420-3	Driving Gear	1	90	981-045-0	Ball (1.5 mm)	10
7	128-835-8	Filter (K200)	2	50	179-423-3	Driving Gear Bushing Spacer	1	91	982-013-0	Ball Bearing (606)	1
8	128-091-8	Air Inlet Bushing	1	51	179-425-3	Driving Gear Spacer	1	92	982-014-0	Ball Bearing (607)	1
9	147-064-6	Filler	1	52	008-430-1	Driven Gear (0)	1	93	982-902-0	Ball Bearing (6901)	2
10	129-253-2	Shut-Off Valve Bushing	1	53	008-431-1	Driven Gear Spindle	1	94	982-903-0	Ball Bearing (6902)	2
11	145-254-6	Shut-Off Valve	1	54	008-432-1	Driven Gear Spindle Collar	1	95	990-320-0	O-Ring (ARP568-003)	1
12	128-684-2	Bumper Spacer	1	55	008-433-1	Driving Gear Spacer	1	96	990-329-0	O-Ring (JW1530-19)	2
13	161-212-3	Reverse Lever	1	56	179-391-5	Spindle Upper Plate	1	97	990-331-0	O-Ring (JW1530-21)	1
14	128-291-8	Rear Plate Spacer	1	57	179-488-3	Angle Casing Setter	1	98	990-603-0	O-Ring (28.5 x 1.3)	2
15	128-285-8	Rear Plate	1	58	944-002-0	Supporting Ring (2.6 x 4.5 x 1)	1	99	990-605-0	O-Ring (25 x 1.45)	1
16	128-286-8	Cylinder	1	59	944-212-0	Supporting Ring (12 x 16 x 1.5)	1	100	990-621-0	O-Ring (3.8 x 1.8 x 1.0)	1
17	145-287-0	Rotor	1	60	944-216-0	Supporting Ring (14 x 20 x 1.85)	1	101	990-900-0	O-Ring (SNS-2)	3
18	145-288-2	Blade (PC)	9	61	944-218-0	Supporting Ring (14 x 20 x 1.9)	1	102	990-910-0	O-Ring (SNS-12.5)	1
19	128-289-8	Front Plate	1	62	945-949-0	Hexagon Round Head Bolt (M5 x 6)	1	103	990-914-0	O-Ring (SNS-16)	1
20	127-036-3	Hammer Casing Connector	1	63	954-105-0	Allen Head Cone Point Screw (M4 x 5)	1	104	990-915-0	O-Ring (SNS-29)	1
21	127-081-3	Locking Nut	1	64	948-426-0	Allen Flush Head Screw (M3 x 12)	1	105	990-305-0	O-Ring (ARP568-003)(KS)	1
22	127-439-3	Front Casing	1	65	970-013-0	Pin (H) (1.5 x 4)	1	106	992-020-0	SU-Ring (Q12)(NTN)	1
23	145-901-0	Rear Liner Plate	1	66	970-130-0	Pin (H) (2.45 x 4.5)	2	107	996-424-0	Packing (16 x 9 x 2)	1
24	145-902-0	Liner	1	67	970-131-0	Pin (H) (2.45 x 9.5)	2	108	891-345-1	Driven Gear Assembly	1
25	145-546-6	Piston	1	68	971-102-0	Pin (2 x 8)	1	109	891-300-1	Socket Snap Pin Assembly	1
26	145-929-6	Check Valve Cover	1	69	973-008-0	Roll Pin (2.8)	1				
27	128-130-8	Operation Rod	1	70	973-018-0	Roll Pin (2 x 18)	1	PARTS FOR ULT-60CL			
28	145-319-0	Anvil	1	71	973-040-0	Roll Pin (1.5 x 5)	2	118	129-684-0	Bumper Spacer	1
29	145-440-0	Driving Blade	2	72	973-122-0	Roll Pin (3 x 22)	1	119	129-782-0	Exhaust Cover	1
30	145-974-0	Roller	2	73	975-004-0	Spacer (5.5 x 3.1 x 2.7)	1	120	976-831-0	Spring (2.9 x 7.7) (0.4)	1
31	145-973-6	Liner Casing Spacer	1	74	975-752-0	Adjusting Spacer (15 x 10 x t)	1	PARTS FOR (TM) TYPE			
32	145-904-6	Front Liner Plate	1	75	975-806-0	Adjusting Spacer (24 x 20 x t)	1	121	851-053-1	Filter (K200)	2
33	145-905-0	Liner Casing	1	76	975-807-0	Adjusting Spacer (28 x 25 x t)	1	122	909-442-0	Quick Exhaust (AQ240F-04-00)	1
34	145-906-6	Liner Casing Cover	1	77	976-006-0	Spring (3 x 5) (0.4)	1	123	935-240-0	Nylon Tube (18NY)	1
35	145-907-6	Relief Valve Spindle	1	78	976-653-0	Spring (2.4 x 5) (0.26)	1	124	935-350-0	Polyurethane Hose (F1504)	1
36	144-970-0	Relief Valve	1	79	976-632-0	Spring (2.8 x 7.7) (0.4)	1	125	990-333-0	O-Ring (JW1530-23)	1
37	144-270-0	Pressure Regulator Valve	1	80	976-674-0	Spring (4.3 x 14) (0.55)	1	A C C E S S O R I E S			
38	145-972-6	Accumulator	1	81	976-791-0	Spring (3.3 x 21) (0.4) WPC	2	126	939-108-0	Allen Wrench (1.5 mm)	1
39	145-908-7	Accumulator Cover	1	82	976-650-0	Spring (3.3 x 16) (0.45)	1	127	909-449-0	Spread Controller (AST001F-04)	1
40	194-742-0	Oil Plug	1	83	976-662-0	Spring Yellow (3.3 x 17) (0.4)	1				
41	145-327-7	Anvil Front Spacer	1	84	977-044-0	Cone Spring (4.1 x 4.7 x 10) (0.45)	1				
42	150-064-5	Plug	1								
43	191-790-1	Suspension Ring	1								



10000 SE PINE
PORTLAND, OR 97216
503-254-6600
FAX 503-255-2615

When ordering spare parts, please specify
tool type, part number, and description.

FOOTNOTES

- = XXXXXXXXXXXXXXXXXXXXXXXXXX
- = XXXXXXXXXXXXXXXXXXXXXXXXXX
- ▲ = XXXXXXXXXXXXXXXXXXXXXXXXXX