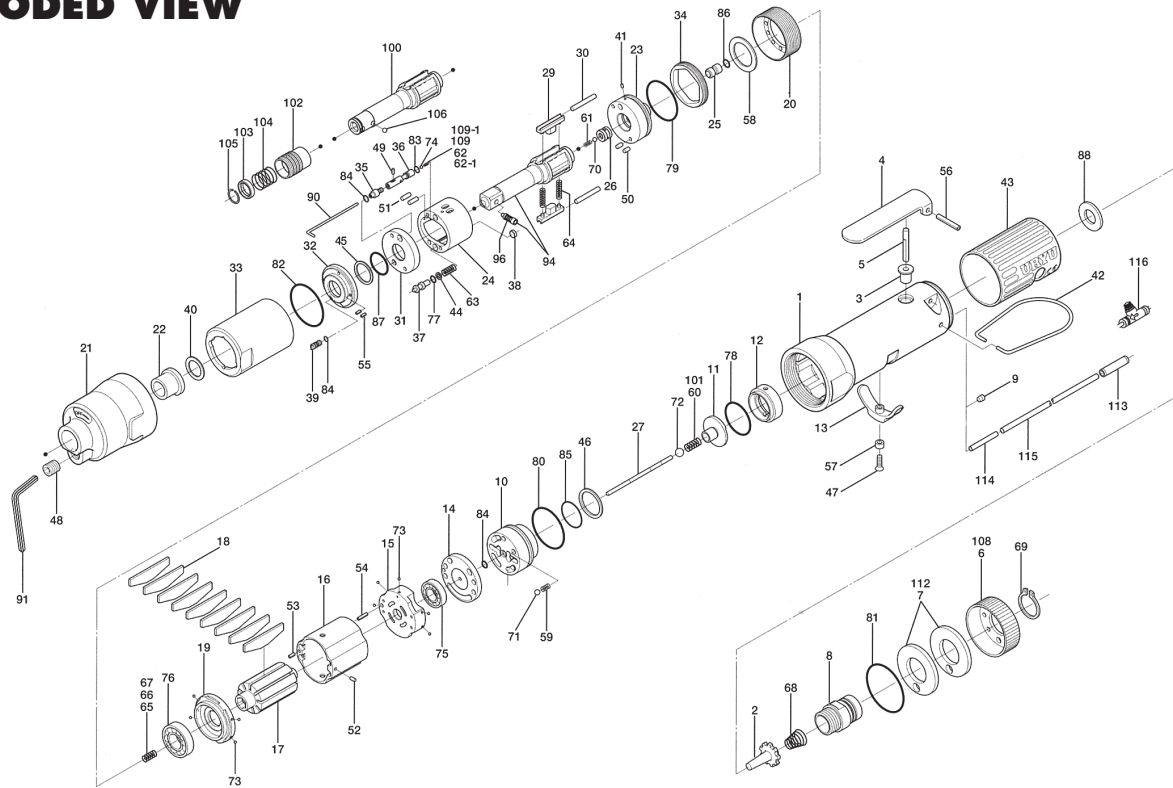


ULT-60S, ULT-60SD SERIES OIL-PULSE WRENCHES

EXPLODED VIEW



PARTS LIST — FOR REFERENCE ONLY

Index Number	Part Number	Description	Qty.	Index Number	Part Number	Description	Qty.	Index Number	Part Number	Description	Qty.
1	129-025-2	Casing	1	42	191-790-1	Suspension Ring	1	80	990-331-0	O-Ring (JW1530-21)	1
2	259-100-0	Valve	1	43	129-842-3	Casing Cover (Red)	1	81	990-603-0	O-Ring (28.5 x 1.3)	1
3	161-103-3	Valve Rod Bushing	1	44	944-002-0	Support Ring (2.6 x 4.5 x 1)	1 ■	82	990-605-0	O-Ring (25 x 1.45)	1 ■
4	196-107-7	Valve Lever	1	45	944-212-0	Support Ring (1.2 x 1.6 x 1.5)	1 ■	83	990-621-0	O-Ring (3.8 x 1.8 x 1.0)	1 ■
5	128-104-8	Valve Rod	1	46	944-216-0	Support Ring (1.4 x 2.0 x 1.85)	1	84	990-900-0	O-Ring (SNS-2)	3 ■
6	128-782-8	Exhaust Cover (Red)	1	47	948-426-0	Allen Head Dog Point Screw (M3 x 12)	1	85	990-914-0	O-Ring (SNS-16)	1
7	128-835-8	Filter (K200)	2 ▲	48	966-099-0	Allen Head Plug (NPT1/16) GDL	1	86	990-305-0	O-Ring (ARP568-003) KS	1 ■
8	128-091-8	Air Inlet Bushing	1	49	970-013-0	Pin (H) (1.5 x 4)	1	87	992-020-0	SU-Ring (Q12/NTN)	1 ■
9	147-064-6	Filler	1	50	970-130-0	Pin (H) (2.45 x 4.5)	2	88	996-424-0	Urethane Packing (16 x 9 x 2)	1
10	129-253-2	Shut-Off Valve Bushing	1	51	970-131-0	Pin (H) (2.45 x 9.5)	2	94	891-552-1	Anvil Assembly (OP-P)	1
11	145-254-6	Shut-Off Valve	1	52	971-102-0	Pin (2 x 3.8)	1	96	891-300-1	Socket Pin Assembly	1
12	129-684-2	Cushion Spacer (White)	1	53	973-008-0	Roll Pin (2 x 8)	1				
13	161-212-3	Reverse Lever	1	54	973-018-0	Roll Pin (2 x 18)	1	PARTS FOR ULT-60SD			
14	128-291-8	Rear Plate Spacer	1	55	973-040-0	Roll Pin (1.5 x 5)	2	62-1	976-631-0	Spring (2.8 x 7.5) (0.45)	1 ■
15	129-285-2	Rear Plate	1	56	973-122-0	Roll Pin (3 x 22)	1	100	145-350-7	Driver Anvil	1
16	129-286-2	Cylinder	1	57	975-004-0	Spacer (5.5 x 3.1 x 2.7)	1	102	011-351-1	Bit Sleeve (1/8)	1
17	145-287-6	Rotor	1	58	975-752-0	Adjusting Spacer (15 x 10 x 1)	1	103	011-352-1	Bit Spacer	1
18	147-288-2	Blade (PC)	9 ▲	59	976-006-0	Spring (3 x 5 x 0.4)	1	104	976-327-0	Spring (13.5 x 11 x 0.9)	1
19	128-289-8	Front Plate	1	60	977-045-0	Spring (4 x 4.6 x 9) (0.45)	1	105	978-117-0	Snap Ring (11.7 x 1)	1
20	147-036-2	Hammer Casing Connector	1	61	976-653-0	Spring (2.4 x 5 x 0.26)	1	106	981-002-0	Ball (1/8)	1
21	145-439-7	Front Casing	1	62	976-636-0	Spring (2.8 x 7.4 x 0.45)	1	PARTS FOR ULT-60SL			
22	190-328-6	Anvil Bushing	1	63	976-665-0	Spring (4.3 x 19 x 0.55)	1	101	977-045-0	Spring (4.0 x 4.6 x 9) (0.45)	1
23	145-901-6	Rear Liner Plate	1	64	976-792-0	Spring (3.5 x 21 x 0.45) WPC	2 ■	108	129-782-0	Exhaust Cover (Blue)	1
24	145-902-6	Liner	1	65	976-650-0	Spring (3.3 x 16 x 0.45) Standard	1	109-1	976-631-0	Spring (2.9 x 7.5) (0.45)	1
25	145-546-6	Piston	1	66	976-661-0	Spring (3.3 x 17 x 0.4) Weak (Black)	1	PARTS FOR ULT-60SDL			
26	145-929-6	Check Valve Cover	1	67	976-662-0	Spring (3.3 x 17 x 0.35) Strong (Yellow)	1	108	129-782-0	Exhaust Cover (Blue)	1
27	129-130-2	Operating Rod (2.1 x 64.7)	1	68	977-227-0	Cone Spring (9 x 12 x 25 x 0.8)	1	109-1	976-631-0	Spring (2.9 x 7.5) (0.45)	1
28	145-319-6	Anvil	1	69	979-358-0	Snap Ring (ISTW-17)	1	PARTS FOR (TM) TYPE			
29	145-440-6	Driving Blade	2	70	981-001-0	Ball (3/32)	1	112	851-053-1	Filter (K200)	2
30	145-974-6	Roller (2.5 x 26)	2	71	981-002-0	Ball (1/8)	1	113	909-442-0	Quick Exhaust (AQ240F-04-00)	1
31	145-973-6	Liner Casing Spacer	1	72	981-003-0	Ball (5/32)	1	114	935-240-0	Nylon Tube (NPT1/4 x 3/8)	1
32	145-904-6	Front Liner Plate	1	73	981-045-0	Ball (1.5 mm)	9	115	935-350-0	Polyurethane Hose (F-1504)	1
33	145-905-6	Liner Casing	1	74	144-270-0	Pressure Valve	1	ACCESSORIES			
34	145-906-6	Liner Casing Cover	1	75	982-014-0	Ball Bearing (607)	1 ▲	90	939-091-0	Allen Wrench (1.5)	1
35	145-907-6	Relief Valve Spindle	1	76	982-902-0	Ball Bearing (6901)	1 ▲	91	939-105-0	Allen Wrench (4)	1
36	145-970-7	Relief Valve	1	77	990-320-0	O-Ring (ARP568-003)	1 ■	116	909-449-0	Speed Controller (AS1001F-04)	1
37	145-972-6	Accumulator	1	78	990-329-0	O-Ring (JW1530-19)	1				
38	145-908-7	Accumulator Cover	1	79	990-329-0	O-Ring (JW1530-19)	1				
39	194-742-0	Oil Plug	1								
40	145-327-7	Anvil Front Spacer	1								
41	150-064-5	Plug	1								



10000 SE PINE
PORTLAND, OR 97216
503-254-6600
FAX 503-255-2615

When ordering spare parts, please specify tool type, part number, and description.

FOOTNOTES

- = Items in Pulse Repair Kit ULT-60S-PRK
- = Items in Pulse Repair Kit ULT-60SD-PRK
- ▲ = Items in Repair Kit ULT-60SD-RK