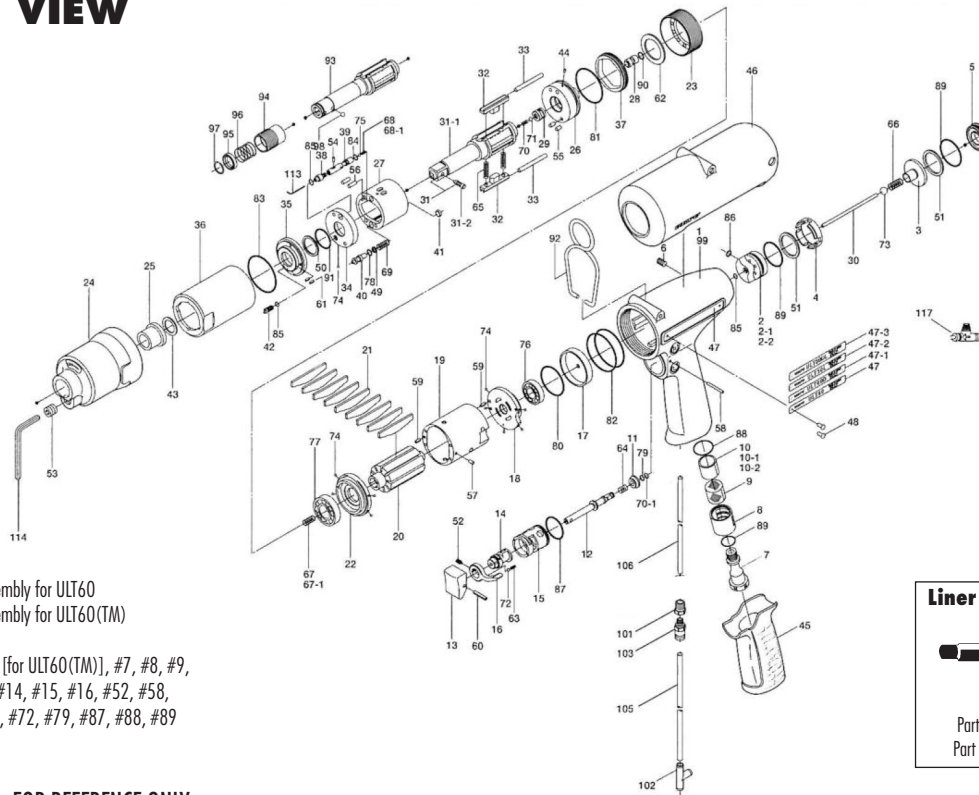


ULT-60 & ULT-60(D) SERIES OIL-PULSE WRENCHES

EXPLODED VIEW

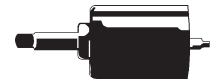


145-984-6 Handle Assembly for ULT60
852-511-1 Handle Assembly for ULT60(TM)

Components:

#1 [for ULT60] or #99 [for ULT60(TM)], #7, #8, #9,
#10, #11, #12, #13, #14, #15, #16, #52, #58,
#60, #63, #64, #70-1, #72, #79, #87, #88, #89

Liner Casing Assembly



Part #891-463-1 for ULT60
Part #145-911-7 for ULT60D

PARTS LIST — FOR REFERENCE ONLY

Index Number	Part Number	Description	Qty.	Index Number	Part Number	Description	Qty.	Index Number	Part Number	Description	Qty.
1	18C-025-8	Handle	1	37	145-906-6	Liner Casing Cover	1	72	981-002-0	Ball (1/8)	1
2	145-253-6	Shut-Off Valve Bushing	1	38	145-907-6	Relief Valve Spindle	1	73	981-003-0	Ball (5/32)	1
2-1	145-253-8	Shut-Off Valve Bushing For ULT60L	1	39	145-970-7	Relief Valve	1	74	981-045-0	Ball (1.5)	9
2-2	145-253-9	Shut-Off Valve Bushing For ULT60DL	1	40	145-972-6	Accumulator	1	75	144-270-0	Pressure Valve	1
3	145-254-6	Shut-Off Valve	1	41	145-908-7	Accumulator Cover	1	76	982-014-0	Ball Bearing (607)	1 ▲
4	145-684-6	Cushion Spacer	1	42	194-742-0	Oil Plug	1	77	982-902-0	Ball Bearing (6901)	1 ▲
5	145-019-6	Valve Cover	1	43	145-327-7	Anvil Front Spacer	1	78	990-320-0	O-Ring (ARP568-003)	1 ●■
6	150-108-5	Valve Plug	1	44	150-064-5	Plug	1	79	990-306-0	O-Ring (ARP568-004)(H)	1 ●■
7	147-091-2	Air Inlet Bushing	1	45	147-842-2	Handle Cover	1	80	990-327-0	O-Ring (JW1530-18)	1
8	147-780-3	Exhaust Deflector	1	46	145-840-8	Body Jacket	1	81	990-329-0	O-Ring (JW1530-19)	1 ●■
9	147-042-2	Silencer	1	47	145-924-6	Name Plate	1	82	990-337-0	O-Ring (JW1530-27)	2 ▲
10	145-835-6	Filter (K50)	1 ▲	47-1	145-924-7	Name Plate (ULT60D)	1	83	990-605-0	O-Ring (25 x 1.45)	1 ●■
10-1	145-835-8	Filter (K100) For ULT60L	1	47-2	145-924-8	Name Plate (ULT60L)	1	84	990-621-0	O-Ring (3.8 x 1.8 x 1.0)	1 ●■
10-2	145-835-8	Filter (K100) For ULT60DL	1	47-3	145-924-9	Name Plate (ULT60DL)	1	85	990-900-0	O-Ring (SNS-2)	3 ●■
11	147-100-3	Valve	1	48	930-205-0	Pin (NO.0 x 2.6)	1	86	990-901-0	O-Ring (SNS-3)	1
12	142-104-6	Valve Rod	1	49	944-002-0	Supporting Ring (2.6 X 4.5 x 1)	1 ●■	87	990-912-0	O-Ring (SNS-14)	1
13	147-107-2	Valve Lever	1	50	944-212-0	Supporting Ring (12 x 16 x 1.5)	1 ●■	88	990-914-0	O-Ring (SNS-16)	1
14	147-210-2	Reverse Valve	1	51	944-217-0	Supporting Ring (14 x 20 x 1.8)	2	89	990-916-0	O-Ring (SNS-18)	3
15	147-211-2	Reverse Valve Bushing	1	52	952-106-0	Allen Head Dog Point Screw (M4 x 6)	1	90	990-305-0	O-Ring (ARP568-003) KS	1 ●■
16	09B-212-5	Reverse Lever	1	53	966-099-0	Allen Head Plug (NPT 1/16)	1	91	992-020-0	O-Ring (SU-Q12)	1 ●■
17	145-291-7	Rear Plate Spacer	1	54	970-013-0	Pin (H) (1.5 x 4)	1	92	174-790-0	Suspension Ring	1
18	145-285-6	Rear Plate	1	55	970-130-0	Pin (H) (2.45 x 4.5)	2	PARTS FOR ULT60D & 60DL			
19	145-286-6	Cylinder	1	56	970-131-0	Pin (H) (2.5 x 9.5)	2	93	145-350-7	Driver Anvil	1
20	145-287-6	Rotor	1	57	971-102-0	Pin (2 x 3.8)	1	94	011-351-1	Bit Sleeve	1
21	147-288-2	Blade (PC)	9 ▲	58	971-123-0	Pin (2 x 23)	1	95	011-352-1	Bit Spacer	1
22	145-289-6	Front Plate	1	59	973-008-0	Roll Pin (2 x 8)	2	96	976-327-0	Spring (13.5 x 11)	1
23	147-036-2	Hammer Casing Connector	1	60	973-014-0	Roll Pin (2 x 14)	1	97	978-117-0	Snap Ring (11.7 x 1.0)	1
24	145-439-7	Front Casing	1	61	973-040-0	Roll Pin (1.5 x 5)	2	98	981-002-0	Ball (1/8)	1
25	190-328-6	Anvil Bushing	1	62	975-752-0	Adjusting Spacer (15 x 10 x 1)	1	PARTS FOR (TM) TYPE			
26	145-901-6	Rear Liner Plate	1	63	976-006-0	Spring (3 x 5)	1	99	852-596-1	Handle	1
27	145-902-6	Liner	1	64	976-457-0	Spring (7 x 12)	1	101	1/16BK1-10F	Barb 10/32 x 1/16NPT x 1/16	1
28	145-546-6	Piston	1	65	976-792-0	Spring (3.5 x 21) WPC	2 ●■	102	909-442-0	Quick Exhaust (AG240F-04-00)	1
29	145-929-6	Check Valve Cover	1	66	977-056-0	Spring (4.1 x 4.7 x 9.4) (0.45) WPC	1	103	PQ-MC05N	5/32 X 10/32 Fitting	1
30	145-130-6	Operating Rod (2.1 x 56.9)	1	67	976-650-0	Spring (3.3 x 16) [Standard]	1	105	935-350-0	Polyurethane Hose (F-1504)	1
31	891-552-1	Anvil (CP (P))	1	67-1	976-662-0	Spring (3.3 x 18) [Stronger]	1	106	935-358-0	Polyurethane Hose (TU-0212)	1
31-1	145-319-6	Anvil (O)	1	68	976-657-0	Spring (2.9 x 7.5) (0.45)	1 ■	ACCESSORIES			
31-2	891-300-1	Socket Pin Assembly	1	68-1	976-631-0	Spring (2.8 x 7.5) (0.45)	1	113	939-091-0	Allen Wrench (1.5 mm)	1
32	145-440-6	Driving Blade	2	69	976-665-0	N=7.5 for ULT-60D	1 ●	114	939-105-0	Allen Wrench (4 mm)	1
33	145-974-6	Roller Pin (2.5 x 26)	2	70	976-653-0	Spring (4.3 x 19)	1 ●■	115	909-449-0	Speed Controller	1
34	145-973-6	Liner Casing Spacer	1	70-1	979-405-0	Spring (2.4 x 5)	1 ●■	FOOTNOTES			
35	145-904-6	Front Liner Plate	1	71	981-001-0	Outer Snap Ring (E2.5)	1	● = Items in Pulse Repair Kit ULT-60D-PRK			
36	145-905-6	Liner Casing	1			Ball (3/32)	1	▲ = Items in Repair Kit ULT-60-RK			
								■ = Items in Repair Kit ULT-60-PRK			



10000 SE PINE
PORTLAND, OR 97216
503-254-6600
FAX 503-255-2615

When ordering spare parts, please specify
tool type, part number, and description.

FOOTNOTES

- = Items in Pulse Repair Kit ULT-60D-PRK
- ▲ = Items in Repair Kit ULT-60-RK
- = Items in Repair Kit ULT-60-PRK