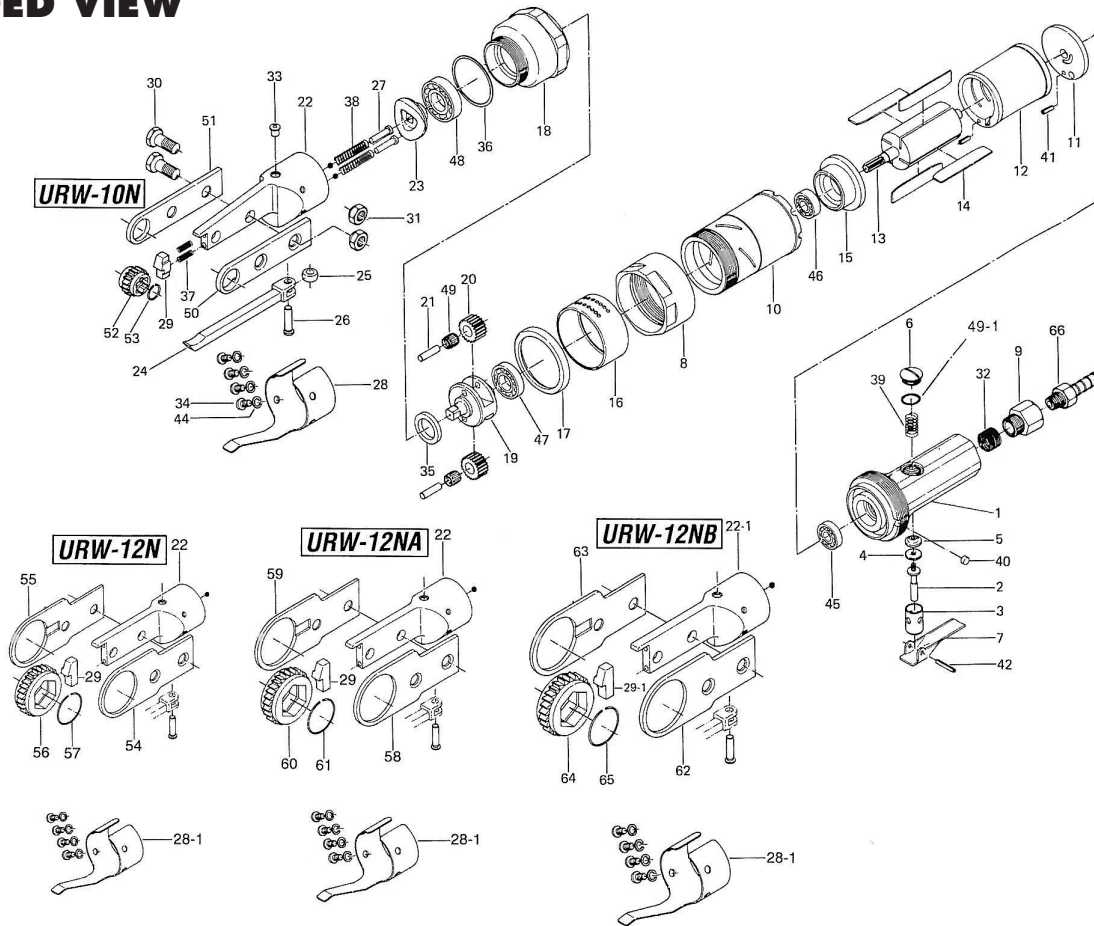


URW-10N, -12N, -12NA, 12NB RATCHET WRENCHES

EXPLODED VIEW



PARTS LIST — FOR REFERENCE ONLY

| Index Number | Part Number | Description | Qty. | Index Number | Part Number | Description | Qty. | Index Number | Part Number | Description | Qty. |
|--------------|-------------|--------------------------------|------|-----------------------------|--------------|--------------------------------------|------|------------------------------|--------------|--------------------------------------|------|
| 1 | 203-011-2 | Handle | 1 | 32 | 965-073-0 | Heli-Sert (UNF5/8 x N6) | 1 | PARTS FOR URW - 12 N | | | |
| 2 | 203-100-1 | Valve | 1 | 33 | 968-131-0 | Grease Cup (1/4) | 1 | 22 | 203-381-1 | Cam Casing | 1 |
| 3 | 203-102-1 | Valve Bushing | 1 | 34 | 948-208-0 | Round Head Screw (M5 x 8) | 4 | 28-1 | 204-663-1 | Rod Plate Spring | 1 |
| 4 | 996-415-0 | Packing (13 x 3.2 x 1.8) | 1 | 35 | 975-185-0 | Spacer (26 x 17 x 4) | 1 | 29 | 203-562-1 | Checker | 1 |
| 5 | 203-121-1 | Valve Packing Nut | 1 | 36 | 975-875-0 | Adjusting Spacer (44 x 40.2 x T) | 1 | 54,55 | 204-664-TSET | Rod Guide (Left) & Rod Guide (Right) | 1 |
| 6 | 203-108-1 | Valve Plug | 1 | 37 | 976-065-0 | Spring (4.7 x 32) | 2 | 56 | 215-656-1 | Ratchet (21 mm) | 1 |
| 7 | 203-107-1 | Valve Lever | 1 | 38 | 976-623-0 | Spring (6 x 35) | 2 | 57 | 978-228-0 | Snap Ring (23 x 1.0 x 8.5) | 1 |
| 8 | 203-736-1 | Handle Nut | 1 | 39 | 976-232-0 | Spring (9.5 x 18) | 1 | PARTS FOR URW - 12 NA | | | |
| 9 | 185-091-7 | Air Inlet Bushing | 1 | 40 | 971-503-0 | Pin (6 x 3) | 1 | 22 | 203-381-1 | Cam Casing | 1 |
| 10 | 203-025-1 | Casing | 1 | 41 | 973-110-0 | Roll Pin (3 x 10) | 2 | 28-1 | 204-663-1 | Rod Plate Spring | 1 |
| 11 | 203-285-1 | Rear Plate | 1 | 42 | 973-120-0 | Roll Pin (3 x 2) | 1 | 29 | 203-562-1 | Checker | 1 |
| 12 | 203-286-1 | Cylinder | 1 | 44 | 962-008-0 | Spring Washer (2-5S) | 4 | 58,59 | 205-664-TSET | Rod Guide (Left) & Rod Guide (Right) | 1 |
| 13 | 203-287-1 | Rotor | 1 | 45 | 982-022-0 | Ball Bearing (627) | 1 | 60 | 216-656-1 | Ratchet (24 mm) | 1 |
| 14 | 203-288-1 | Blade | 4 | 46 | 982-015-0 | Ball Bearing (608) | 1 | 61 | 978-281-0 | Snap-Ring (23 x 1.2 x 9) | 1 |
| 15 | 203-289-1 | Front Plate | 1 | 47 | 982-403-0 | Ball Bearing (EE-4) | 1 | PARTS FOR URW - 12 NB | | | |
| 16 | 203-782-1 | Exhaust Deflector | 1 | 48 | 989-012-0 | Ball Bearing (E-15) | 1 | 22-1 | 218-381-1 | Cam Casing | 1 |
| 17 | 203-785-1 | Exhaust Deflector Locking Ring | 1 | 49 | 988-102-0 | Needle Roller Bearing (B36) | 2 | 28-1 | 204-663-1 | Rod Plate Spring | 1 |
| 18 | 203-029-1 | Gear Casing | 1 | 49-1 | 990-908-0 | O-Ring(SNS-10) | 1 | 29-1 | 218-562-1 | Checker | 1 |
| 19 | 203-480-1 | Gear Cage | 1 | PARTS FOR URW - 10 N | | | | 62,63 | 218-664-TSET | Rod Guide (Left) & Rod Guide (Right) | 1 |
| 20 | 203-470-1 | Planet Gear | 2 | 22 | 203-381-1 | Cam Casing | 1 | 64 | 218-656-1 | Ratchet (30 mm) | 1 |
| 21 | 203-473-1 | Planet Gear Pin | 2 | 28 | 203-663-1 | Rod Plate Spring | 1 | 65 | 978-337-0 | Snap Ring (34 x 1.4 x 13) | 1 |
| 23 | 203-346-1 | Cam | 1 | 29 | 203-562-1 | Checker | 1 | | | | |
| 24 | 203-650-1 | Rod | 1 | 50,51 | 203-664-TSET | Rod Guide (Left) & Rod Guide (Right) | 1 | | | | |
| 25 | 201-651-1 | Cam Roller | 1 | 52 | 214-656-1 | Ratchet (17 mm) | 1 | | | | |
| 26 | 218-652-1 | Cam Roller Pin | 1 | 53 | 978-203-0 | Snap Ring (20 x 1.0 x 7.5) | 1 | | | | |
| 27 | 201-653-1 | Cam Roller Push Pin | 2 | | | | | | | | |
| 30 | 201-666-1 | Rod Guide Bolt | 2 | | | | | | | | |
| 31 | 201-667-1 | Rod Guide Nut | 2 | | | | | | | | |

FOOTNOTES



10000 SE PINE
 PORTLAND, OR 97216
 503-254-6600
 FAX 503-255-2615

When ordering spare parts, please specify tool type, part number, and description.