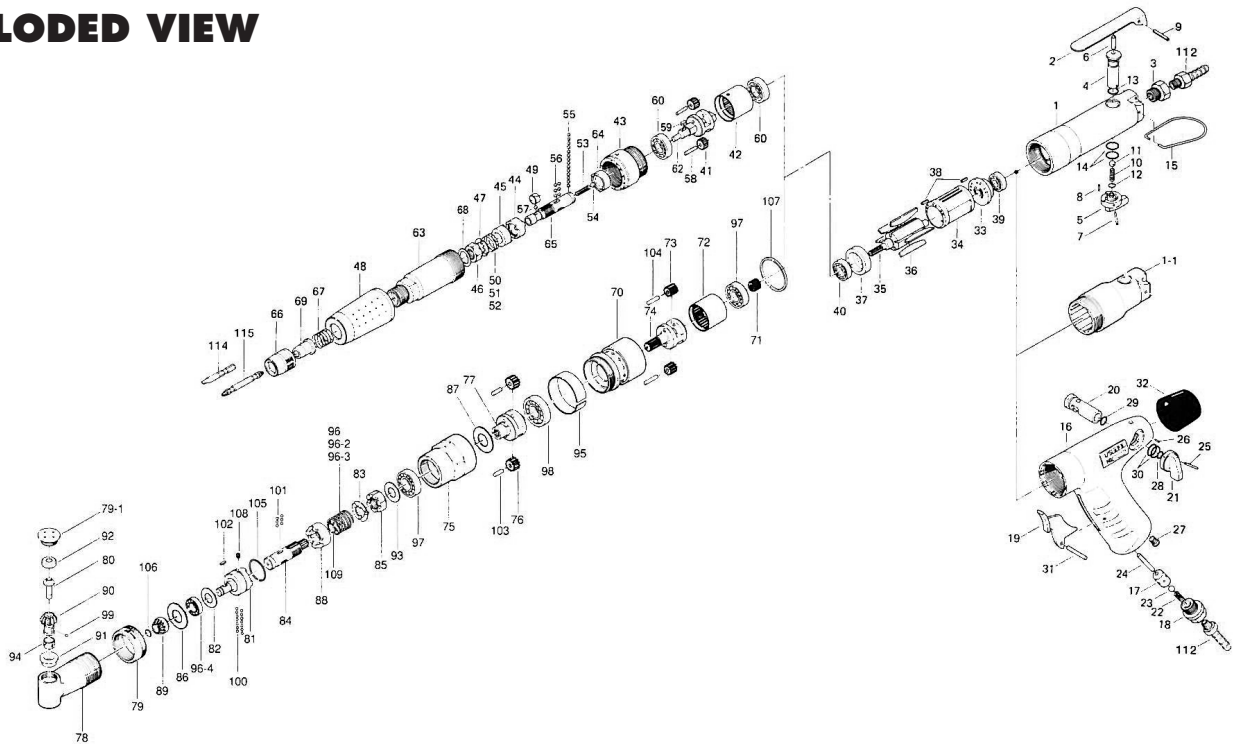


US-5, US-5PB, & US-5CA SCREWDRIVERS

EXPLODED VIEW



PARTS LIST — FOR REFERENCE ONLY

Index Number	Part Number	Description	Qty.
418-984-1 Casing Assembly for US-5			
434-984-1 Casing Assembly for US-5CA (components are marked with "●")			
(Only Casing is different between 418-984-1 and 434-984-1)			
1	418-025-1	Casing >or	1 ●
1-1	434-025-1	Casing	1 ●
2	418-107-1	Valve Lever	1 ●
3	418-091-1	IR Inlet Bushing	1 ●
4	418-210-1	Reverse Valve	1 ●
5	418-212-1	Reverse Lever	1 ●
6	970-321-0	Pin (H) (4 x 21)	1 ●
7	973-022-0	Roll Pin (2 x 22)	1 ●
8	973-006-0	Roll Pin (2 x 6)	1 ●
9	973-124-0	Roll Pin (3 x 24)	1 ●
10	976-151-0	Spring (7 x 16)	1 ●
11	981-207-0	Ball (9/32)	1 ●
12	990-003-0	O-Ring (P-5)	1 ●
13	990-007-0	O-Ring (P-9)	1 ●
14	990-014-0	O-Ring (P-14)	2 ●
15	010-790-1	Suspension Ring	1
432-984-1 Handle Assembly for US-5PB (components are marked with "x")			
16	432-025-2	Handle	1 x
17	010-102-1	Valve Bushing	1 x
18	432-091-1	Air Inlet Bushing	1 x
19	600-107-1	Throttle Trigger	1 x
20	432-210-1	Reverse Valve	1 x
21	418-212-1	Reverse Lever	1 x
22	976-151-0	Spring (7 x 16)	1 x
23	981-207-0	Ball (9/32)	1 x
24	970-228-0	Pin (3 x 28)	1 x
25	973-022-0	Roll Pin (2 x 22)	1 x
26	973-006-0	Roll Pin (2 x 6)	1 x
27	966-100-0	Allen Head plug (1/8)	1 x
28	990-003-0	O-Ring (P-5)	1 x
29	990-007-0	O-Ring (P-9)	1 x
30	990-014-0	O-Ring (P-14)	2 x
31	973-116-0	Roll Pin (3 x 16)	1 x
32	432-842-1	Casing Protector	1
COMMON PARTS			
33	418-285-1	Rear Plate	1

Index Number	Part Number	Description	Qty.
34	418-286-1	Cylinder	1
35	418-287-1	Rotor	1
36	600-288-2	Blade	5
37	418-289-1	Front Plate	1
38	973-010-0	Roll Pin (2 x 10)	2
39	982-401-0	Ball Bearing (EE-2)	1
40	982-402-0	Ball Bearing (EE-3)	1
PARTS FOR US-5 & US-5PB			
41	600-470-1	Planet Gear	1
42	418-465-1	Internal Gear	1
43	430-036-1	Hammer Casing Connector	1
44	430-364-1	Driven Clutch	1
45	430-365-1	Hammer	1
46	430-362-1	Adjusting Nut	1
47	430-347-1	Adjusting Nut Washer	1
48	430-782-2	Exhaust Deflector	1
49	430-356-1	Bit Band	1
50	976-538-0	Spring (23 x 13.5) (Weak)	1 ▲
51	976-539-0	Spring (23 x 13.5) (Standard)	1 ▲
52	976-540-0	Spring (23 x 13.5) (Strong)	1 ▲
53	976-070-0	Spring (4.9 x 28)	1
54	981-004-0	Ball (3/16)	1
55	981-002-0	Ball (1/8)	14
56	981-003-0	Ball (5/32)	6
57	981-002-0	Ball (1/8)	1
58	972-119-0	Needle Roller (4 x 18)	2
59	974-005-0	Key (3 x 6)	1
60	982-403-0	Ball Bearing (EE-4)	2
62	418-480-1	Gear Cage	1
63	430-028-1	Hammer Casing	1
64	430-366-1	Driving Clutch	1
65	430-360-1	Hammer Shank	1
66	430-057-1	Bit Casing	1
67	976-358-0	Spring (14.4 x 26)	1
68	975-120-0	Spacer (20 x 12.5 x 1)	1
69	917-400-0	Finder (5 x 56 x 23)	1
PARTS FOR US-5CA			
434-007-1 Angle Head Casing Assembly (components are marked with "■")			
70	434-030-1	First Gear Casing	1
71	434-460-1	Rotor Gear	1

Index Number	Part Number	Description	Qty.
72	434-465-1	First Internal Gear	1
73	434-470-1	First Planet Gear	2
74	434-480-1	First Gear Cage	1
75	434-031-1	Second Gear Casing	1
76	434-471-1	Second Planet Gear	2
77	434-485-1	Second Gear Cage	1
78	434-028-1	Angle Head Casing	1 ■
79	434-068-1	Head Casing Lock Nut	1
79-1	434-067-1	Hammer Casing Cover	1
80	434-318-1	Pilot Pin	1 ■
81	434-319-2	Anvil	1
82	434-334-1	Anvil Spacer	1
83	430-347-1	Adjusting Nut Washer	1
84	430-360-1	Hammer Shank	1
85	430-362-1	Adjusting Nut	1
86	975-788-0	Adjusting Spacer (22 x 18.5 x 1)	1
87	975-148-0	Spacer (22 x 15.5 x 2.5)	1
88	430-365-1	Hammer	1
89	434-420-1	Driving Gear	1
90	434-430-1	Driven Gear	1 ■
91	434-434-1	Driven Gear Bushing	1 ■
92	434-435-1	Driven Gear spindle Collar	1 ■
93	434-483-1	Gear Cage Spacer	1
94	430-356-1	Bit Band	1 ■
95	600-782-1	Exhaust Deflector	1
96	976-539-0	Spring (Standard)	1 ▲
96-2	976-538-0	Spring (Weak)	1 ▲
96-3	976-540-0	Spring (Strong)	1 ▲
96-4	982-402-0	Ball Bearing (EE-3)	1
97	982-403-0	Ball Bearing (EE-4)	2
98	982-404-0	Ball Bearing (EE-5)	1
99	981-002-0	Ball (1/8)	1 ■
100	981-002-0	Ball (1/8)	14
101	981-003-0	Ball (5/32)	6
102	974-008-0	Key (3 x 8)	1
103	972-115-0	Roller Pin (4 x 16)	2
104	972-120-0	Roller Pin (4 x 19)	2
105	978-240-0	Snap Ring (24 x 1)	1
106	978-097-0	Snap Ring (9.5 x 0.8)	1
107	990-929-0	O-Ring (SNS-36)	1
108	950-203-0	Flat Point Screw (M5 x 3.5)	1
109	975-763-0	Adjusting Spacer (17 x 10 x 1)	1



10000 SE PINE
PORTLAND, OR 97216
503-254-6600
FAX 503-255-2615

When ordering spare parts, please specify
tool type, part number, and description.

FOOTNOTES

▲ = User's option