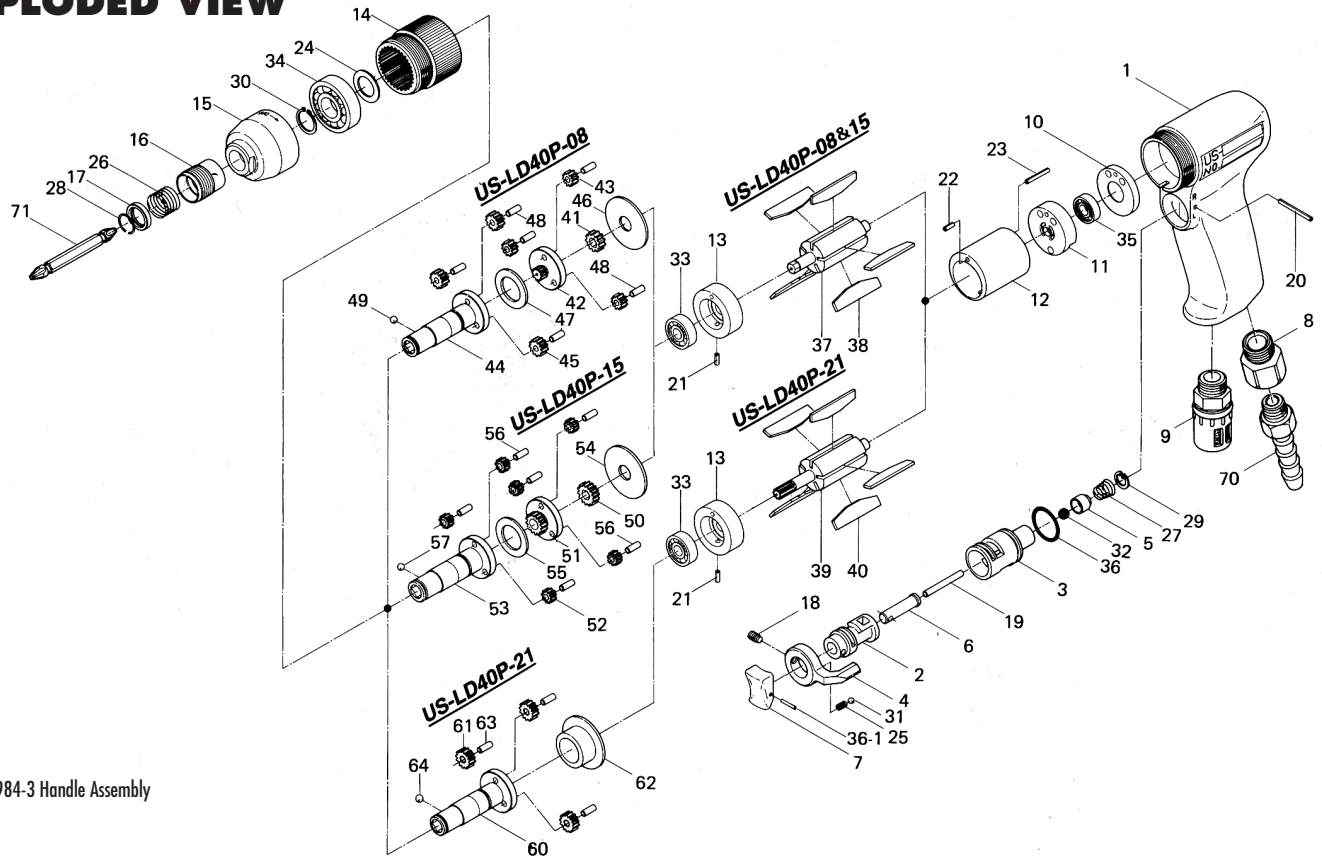


US-LD40P SERIES SCREWDRIVERS

EXPLODED VIEW



425-984-3 Handle Assembly

PARTS LIST — FOR REFERENCE ONLY

Index Number	Part Number	Description	Qty.	Index Number	Part Number	Description	Qty.	Index Number	Part Number	Description	Qty.
COMMON PARTS											
1	425-025-3	Handle	1 ●	25	976-006-0	Spring (3 x 5)	1 ●	44	425-350-4	Anvil	1
2	480-210-9	Reverse Valve	1 ●	26	976-327-0	Spring (13.5 x 11)	1	45	472-471-7	Second Planet Gear	3
3	480-211-9	Reverse Valve Bushing	1 ●	27	977-150-0	Cone Spring (6.8 x 8.5 x 8)	1 ●	46	472-807-7	Spacer	1
4	09B-212-5	Reverse Lever	1 ●	28	978-117-0	Snap Ring (11.7 x 1.0)	1	47	496-483-1	Gear Cage Spacer	1
5	480-100-9	Valve	1 ●	29	979-002-0	Inner Snap (9)	1 ●	48	972-089-0	Roller Pin (3 x 8)	6
6	480-103-9	Valve Rod Bushing	1 ●	30	979-109-0	Outer Snap Ring (12)	1	49	981-002-0	Ball (1/8)	1
7	426-107-4	Throttle Trigger	1 ●	31	981-002-0	Ball (1/8)	1 ●	PARTS FOR US-LD40P-15			
8	191-091-5	Air Inlet Bushing	1 ●	32	981-206-0	Ball (1/4) (Black)	1 ●	50	472-460-5	Rotor Gear	1
9	235-885-0	Silencer Assembly	1	33	982-013-0	Ball Bearing (606zz)	1 ■	51	472-480-5	First Gear Cage	1
10	425-291-4	Rear Plate Spacer	1	34	982-101-0	Ball Bearing (6001)	1	52	472-470-5	Planet Gear	6
11	467-285-7	Rear Plate	1	35	982-033-0	Miniature Ball Bearing (696zz)	1 ■	53	425-350-3	Anvil	1
12	472-286-7	Cylinder	1	36	990-912-0	O-Ring (SNS14)	1 ●	54	472-807-7	Spacer	1
13	472-289-7	Front Plate	1	36-1	973-014-0	Roll Pin (2 x 14)	1 ●	55	496-483-1	Gear Cage Spacer	1
14	425-029-3	Gear Casing	1	PARTS FOR US-LD40P-08 & -15				56	972-089-0	Roller Pin (3 x 8)	6
15	425-070-4	Gear Casing Cover	1	37	425-287-4	Rotor	1	57	981-002-0	Ball (1/8)	1
16	011-351-1	Bit Sleeve	1	38	425-288-4	Blade	5 ■	PARTS FOR US-LD40P-21			
17	011-352-1	Bit Spacer	1	PARTS FOR US-LD40P-21				60	425-350-2	Anvil	1
18	952-106-0	Allen Head Dog Point Screw (M4 x 6)	1 ●	39	425-287-2	Rotor	1	61	472-470-3	Planet Gear	3
19	970-228-0	Pin (3 x 28)	1 ●	40	425-288-4	Blade	5 ■	62	472-807-3	Spacer	1
20	971-123-0	Pin (2 x 23)	1 ●	PARTS FOR US-LD40P-08				63	972-089-0	Roller Pin (3 x 8)	3
21	973-006-0	Roll Pin (2 x 6)	1	41	472-460-7	Rotor Gear	1	64	981-002-0	Ball (1/8)	1
22	973-010-0	Roll Pin (2 x 10)	1	42	472-480-7	First Gear Cage	1				
23	973-016-0	Roll Pin (2 x 16)	1	43	472-470-7	First Planet Gear	3				
24	975-103-0	Spacer (18 x 12.1 x 1)	1								

FOOTNOTES

- = Casing Components of 425-984-3 Handle Assembly
- = Items in Pulse Repair Kit US-LD40P-RK



10000 SE PINE
PORTLAND, OR 97216
503-254-6600
FAX 503-255-2615

When ordering spare parts, please specify tool type, part number, and description.