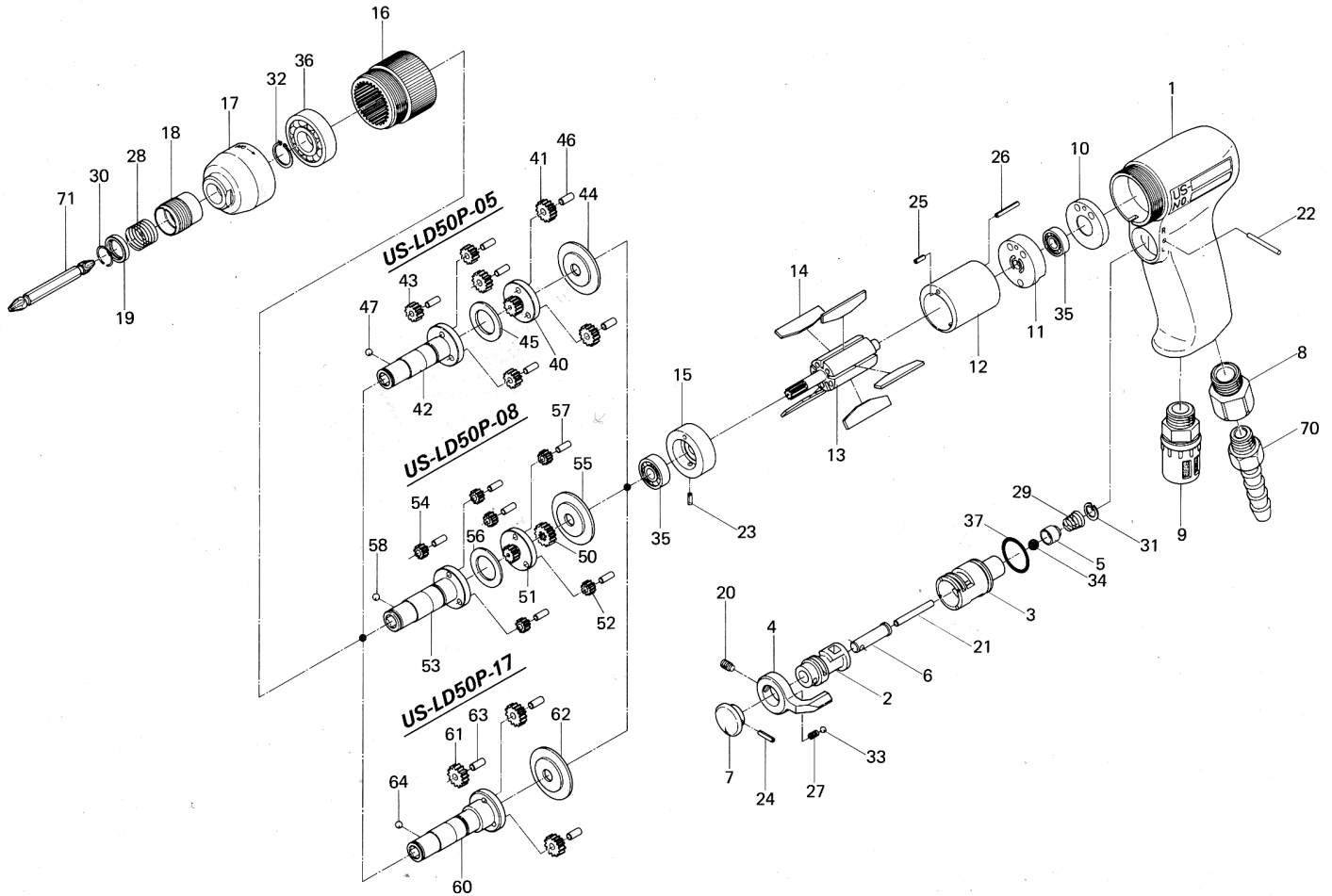


US-LD50P SERIES SCREWDRIVERS

EXPLODED VIEW



PARTS LIST — FOR REFERENCE ONLY

Index Number	Part Number	Description	Qty.	Index Number	Part Number	Description	Qty.	Index Number	Part Number	Description	Qty.
1	426-025-4	Handle	1 ●	23	973-007-0	Roll Pin (2 x 7)	1	46	972-110-0	Roller Pin (4 x 10)	6
2	480-210-9	Reverse Valve	1 ●	24	973-014-0	Roll Pin (2 x 14)	1 ● ■	47	981-002-0	Ball (1/8)	1
3	480-211-9	Reverse Valve Bushing	1 ●	25	973-072-0	Roll Pin (2.5 x 12)	1	PARTS FOR US-LD50P-08			
4	098-212-5	Reverse Lever	1 ●	26	973-078-0	Roll Pin (2.5 x 18)	1	50	444-460-3	Rotor Gear	1
5	480-100-9	Valve	1 ●	27	976-006-0	Spring (3 x 5)	1 ●	51	444-480-3	First Gear Cage	1
6	480-103-9	Valve Rod Bushing	1 ●	28	976-327-0	Spring (13.5 x 11)	1	52	444-471-4	First Planet Gear	3
7	426-107-4	Throttle Trigger	1 ●	29	977-150-0	Cone Spring (6.8 x 8.5 x 8)	1 ●	53	426-350-3	Anvil	1
8	191-091-5	Air Inlet Bushing	1 ●	30	978-117-0	Snap Ring (11.7 x 1.0)	1	54	444-471-3	Second Planet Gear	3
9	235-885-0	Silencer	1 ■	31	979-002-0	Inner Snap Ring (9)	1 ●	55	444-807-4	Spacer	1
10	426-291-4	Rear Plate Spacer	1	32	979-112-0	Outer Snap Ring (15)	1	56	444-483-4	Gear cage Spacer	1
11	444-285-4	Rear Plate	1	33	981-002-0	Ball (1/8)	1 ●	57	972-110-0	Roller Pin (4 x 10)	6
12	444-286-4	Cylinder	1	34	981-206-0	Ball (1/4) (Black)	1 ●	58	981-002-0	Ball (1/8)	1
13	426-287-4	Rotor	1	35	982-014-0	Ball Bearing (607)	2	PARTS FOR US-LD50P-17			
14	444-288-6	Blade	5 ■	36	982-102-0	Ball Bearing (6002)	1	60	426-350-2	Anvil	1
15	444-289-4	Front Plate	1	37	990-912-0	O-Ring (SNS-14)	1 ●	61	444-470-4	Planet Gear	3
16	426-029-4	Gear Casing	1	PARTS FOR US-LD50P-05				62	444-807-4	Spacer	1
17	426-070-4	Gear Casing Cover	1	40	444-480-4	First Gear Cage	1	63	972-111-0	Roller Pin (4 x 11)	3
18	011-351-1	Bit Sleeve	1	41	444-470-4	First Planet Gear	3	64	981-002-0	Ball (1/8)	1
19	011-352-1	Bit Spacer	1	42	426-350-4	Anvil	1				
20	952-106-0	Allen Head Dag Point	1 ●	43	444-471-4	Second Planet Gear	3				
		Screw (M4 x 6)	1 ●	44	444-807-4	Spacer	1				
21	970-228-0	Pin (3 x 28)	1 ●	45	444-483-4	Gear Cage Spacer	1				
22	971-123-0	Pin (2 x 23)	1 ●								

FOOTNOTES

- = Items in Handle Assembly 426-984-4
- = Items in Pulse Repair Kit US-LD50P-RK



10000 SE PINE
PORTLAND, OR 97216
503-254-6600
FAX 503-255-2615

When ordering spare parts, please specify
tool type, part number, and description.