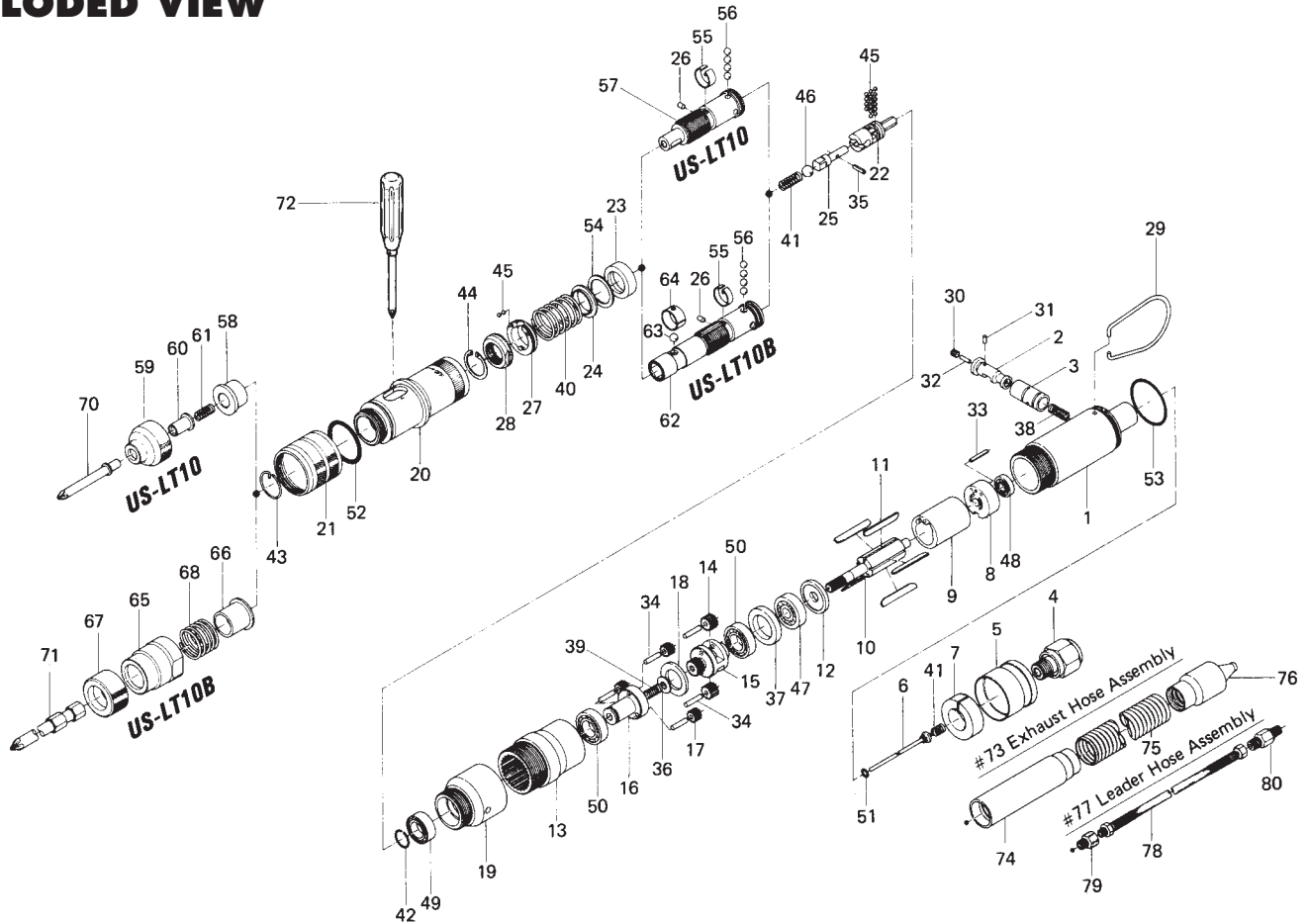


US-LT10 SERIES SCREWDRIVERS

EXPLODED VIEW



PARTS LIST — FOR REFERENCE ONLY

Index Number	Part Number	Description	Qty.	Index Number	Part Number	Description	Qty.	Index Number	Part Number	Description	Qty.
1	473-025-2	Casing	1	31	971-000-0	Pin (1.5 x 3)	1	61	976-048-0	Spring (4 x 10)	1 ■
2	459-210-1	Reverse Valve	1	32	971-001-0	Pin (1.5 x 5)	1	62	473-319-6	Anvil	1 ✕
3	459-211-1	Reverse Valve Bushing	1	33	971-007-0	Pin (1.5 x 12)	1	63	981-002-0	Ball (1/8)	1 ✕
4	405-091-1	Air Inlet Rushing	1	34	972-009-0	Needle Roller (2 x 9)	5	64	470-356-8	Bit Band	1 ✕
5	459-782-1	Exhaust Deflector	1	35	973-001-0	Roll Pin (1.5 x 6)	1	65	473-057-4	Bit Casing	1 ✕
6	459-100-1	Valve (with Rod)	1	36	975-008-0	Spacer (9 x 2 x 1)	1	66	473-351-4	Bit Sleeve	1 ✕
7	459-835-2	Filter	1	37	975-105-0	Spacer (18.3 x 12 x 3.5)	1	67	473-567-4	Bushing	1 ✕
8	459-285-1	Rear Plate	1	38	976-035-0	Spring (36 x 10)	1	68	976-345-0	Spring (14 x 17)	1 ✕
9	459-286-1	Cylinder	1	39	976-037-0	Spring (3.4 x 11)	1	ACCESSORIES			
10	400-287-1	Rotor	1	40	976-379-0	Spring (15 x 18)	1	70	916-110-0	(+) Bit (No.1 x 31) for US-LT10	1
11	400-288-1	Blade	5	41	976-058-0	Spring (4.5 x 11)	2	71	916-137-0	(+) Bit (No.1 x 50) for US-LT10B	1
12	400-289-1	Front Plate	1	42	978-080-0	Snap Ring (8 x 1)	1	72	939-400-0	Torque Adjusting Driver (No.1)	1
13	459-029-2	Gear Casing	1	43	978-141-0	Snap Ring (14 x 1)	1	OPTIONAL ACCESSORIES			
14	459-470-1	First Planet Gear	2	44	979-351-0	Inner Snap Ring (IS TW 10)	1	73	459-885-1	Exhaust Hose Assembly	1
15	459-480-1	First Gear Cage	1	45	981-000-0	Ball (1/16)	18	74	459-779-1	Exhaust Stack Bushing Connector	1
16	459-485-1	Second Gear Cage	1	46	981-004-0	Ball (3/16)	1	75	935-500-0	Exhaust Hose	1
17	459-471-1	Second Planet Gear	3	47	987-017-0	Miniature Ball Bearing (R-1650)	1	76	408-780-0	Exhaust Stack	1
18	459-483-1	Gear Cage Spacer	1	48	987-112-0	Miniature Ball Bearing (L-1040)	1	77	934-201-0	Leader Hose Assembly	1
19	459-037-1	Gear Casing Connector	1	49	987-122-0	Miniature Ball Bearing (L 1480)	1	78	934-200-0	Air Hose Assembly	1
20	473-369-2	Clutch Casing	1	50	987-123-6	Miniature Ball Bearing (L 1680)	2	79	942-100-0	Connecting Screw (NPT1/8 x 1/8)	1
21	473-370-2	Clutch Casing Sleeve	1	51	990-901-0	O-Ring (SNS-3)	1	80	942-140-0	Connecting Screw (NPT1/4 x PS1/4)	1
22	473-346-2	Cam	1	52	990-916-0	O-Ring (SNS-18)	1				
23	473-375-2	Cam Ring	1	53	990-590-0	O-Ring (17 x 1)	1				
24	473-164-2	Spring Setter	1	54	944-013-0	Back-up Ring (P-1 2)	1				
25	473-318-2	Pilot Pin	1	55	473-670-2	Band	1				
26	473-764-2	Notch Pin	2	56	981-002-0	Ball (1/8)	4				
27	473-562-2	Retainer	1	57	473-319-2	Anvil	1 ■				
28	473-257-2	Regulating Screw	1	58	473-328-2	Bit Sleeve	1 ■				
29	401-790-1	Suspension Ring	1	59	473-057-2	Bit Casing	1 ■				
30	953-053-0	Allen Head Flat Point Screw (M3 x 3)	1	60	917-001-0	Finder (3.1 x 21 x 10)	1 ■				

When ordering spare parts, please specify tool type, part number and description.

FOOTNOTES

- = Parts for US-LT10
- ✕ = Parts for US-LT10B

AIMCO also offers a complete line of standard & special adapters, bits, sockets and extensions.



AIMCO

10000 SE PINE, PORTLAND, OR 97216
503-254-6600 FAX 503-255-2615