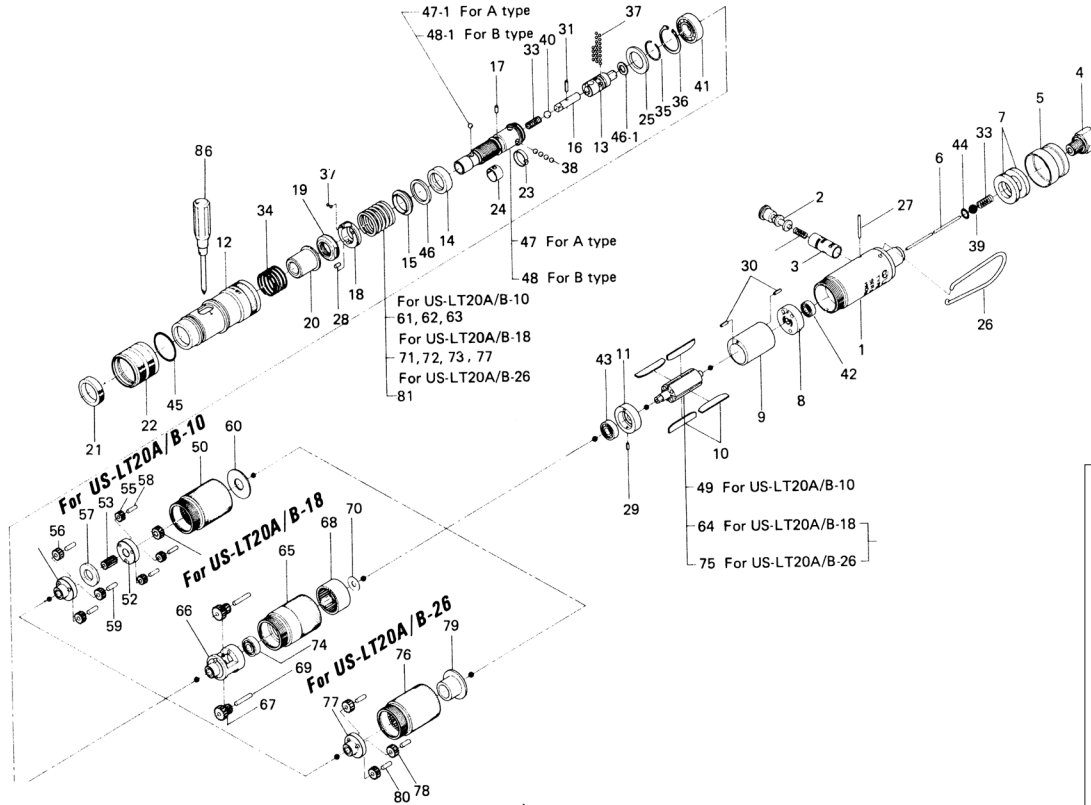


US-LT20 SERIES SCREWDRIVERS

EXPLODED VIEW

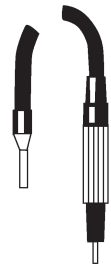


Direct Silencer



5-088-2 Silencer Assembly

Piped-Away Silencer



#88 455-885-1 Exhaust Hose Assembly
#89 934-201-0 Leader Hose Assembly

PARTS LIST — FOR REFERENCE ONLY

Index Number	Part Number	Description	Qty.	Index Number	Part Number	Description	Qty.	Index Number	Part Number	Description	Qty.
1	470-025-8	Casing	1	37	981-000-0	Ball (1/16)	22	PARTS FOR US-LT20A-18 & US-LT20B-18			
2	893-055-1	Reverse Valve (Lock)	1	38	981-002-0	Ball (1/8)	4	64	470-287-6	Rotor	1
3	470-211-8	Reverse Valve Bushing	1	39	981-206-0	Ball (1/4)	1	65	470-029-6	Gear Casing	1
4	405-091-1	Air Inlet Bushing	1	40	981-004-0	Ball (3/16)	1	66	470-480-6	Gear Cage	1
5	455-782-1	Exhaust Deflector	1	41	982-036-0	Ball Bearing (699)	1	67	470-470-6	Planet Gear	2
6	470-104-8	Valve Rod	1	42	987-038-0	Miniature Ball Bearing (R-1140ZZ)	1	68	470-465-6	Internal Gear	1
7	470-835-9	Filter	2	43	987-041-0	Miniature Ball Bearing (R-1350ZZ)	1	69	972-037-0	Needle Roller (2.5 x 15)	2
8	470-285-8	Rear Plate	1	44	990-903-0	O-Ring (SNS-5)	1	70	975-009-0	Spacer (9 x 5.2 x 0.3)	1
9	470-286-8	Cylinder	1	45	990-918-0	O-Ring (SNS-20)	1	71	976-431-0	Spring (Standard: 18 x 20)	1
10	470-288-1	Blade (PC)	4	46	944-014-0	Back-up Ring (P-1 4)	1	72	976-432-0	Spring (Strong: 18 x 20)	1
11	470-289-8	Front Plate	1	46-1	470-344-8	Cam Spacer	1	73	976-430-0	Spring (Weak: 17.5 x 20)	1
12	470-369-9	Clutch Casing	1	PARTS FOR US-LT20A				74	987-013-0	Miniature Ball Bearing (R-1350)	1
13	470-346-8	Cam	1	47	470-319-3	Anvil	1	PARTS FOR US-LT20A-26 & US-LT20B-26			
14	470-375-9	Cam Ring	1	47-1	981-155-0	Ball (3.5)	1	75	470-287-6	Rotor	1
15	470-164-9	Spring Setter	1	PARTS FOR US-LT20B				76	470-029-8	Gear Casing	1
16	470-318-8	Pilot Pin	1	48	470-319-4	Anvil	1	77	470-480-4	Gear Cage	1
17	470-764-8	Notch Pin	1	48-1	981-150-0	Ball (3 mm)	1	78	471-470-3	Planet Gear	3
18	470-562-8	Retainer	1	PARTS FOR US-LT20A-10 & US-LT20B-10				79	470-483-4	Gear Cage Spacer	1
19	470-257-8	Regulating Screw	1	49	470-287-8	Rotor	1	80	972-033-0	Needle Roller (2.5 x 8)	3
20	470-351-7	Bit Sleeve	1	50	470-029-8	Gear Casing	1	81	976-430-0	Spring (Standard: 17.5 x 20)	1
21	470-567-7	Bushing	1	51	470-460-8	Rotor Gear	1	ACCESSORIES			
22	470-370-8	Clutch Casing Sleeve	1	52	470-480-8	First Gear Cage	1	86	939-402-0	Manual Driver No 2 (Ø5)	1
23	470-670-8	Band	1	53	470-445-8	Middle Gear	1	87	455-088-2	Silencer Assembly	1
24	470-356-8	Bit Band	1	54	470-485-8	Second Gear Cage	1	ACCESSORIES FOR DIRECT TYPE			
25	975-153-0	Spacer (21 x 14.5 x 1)	1	55	470-470-8	First Planet Gear	3	88	455-885-1	Exhaust Hose Assembly	1
26	401-790-1	Suspension Ring	1	56	470-471-8	Second Planet Gear	3	ACCESSORIES FOR PIPED-AWAY TYPE			
27	970-017-0	Pin (H) (1.5 x 18)	1	57	471-483-7	Gear Cage Spacer	1	89	934-201-0	Leader Hose Assembly	1
28	970-091-0	Pin (H) (2 x 4.5)	1	58	972-008-0	Needle Roller (2 x 8)	3				
29	973-000-0	Roll Pin (1.5 x 4)	1	59	972-033-0	Needle Roller (2.5 x 8)	3				
30	973-001-0	Roll Pin (1.5 x 6)	2	60	975-151-0	Spacer (22 x 8 x 1.5)	1				
31	973-003-0	Roll Pin (1.5 x 8)	1	61	976-432-0	Spring (Standard: 18 x 20)	1				
32	976-048-0	Spring (4 x 10)	1	62	976-431-0	Spring (Weaker: 18 x 20)	1				
33	976-058-0	Spring (4.5 x 11)	2	63	976-430-0	Spring (Weakest: 17.5 x 20)	1				
34	976-427-0	Spring (17.5 x 10)	1								
35	978-150-0	Snap Ring (15 x 1)	1								
36	979-320-0	Inner Snap Ring (IRTW-20)	1								

FOOTNOTES



10000 SE PINE
PORTLAND, OR 97216
503-254-6600
FAX 503-255-2615

When ordering spare parts, please specify
tool type, part number, and description.