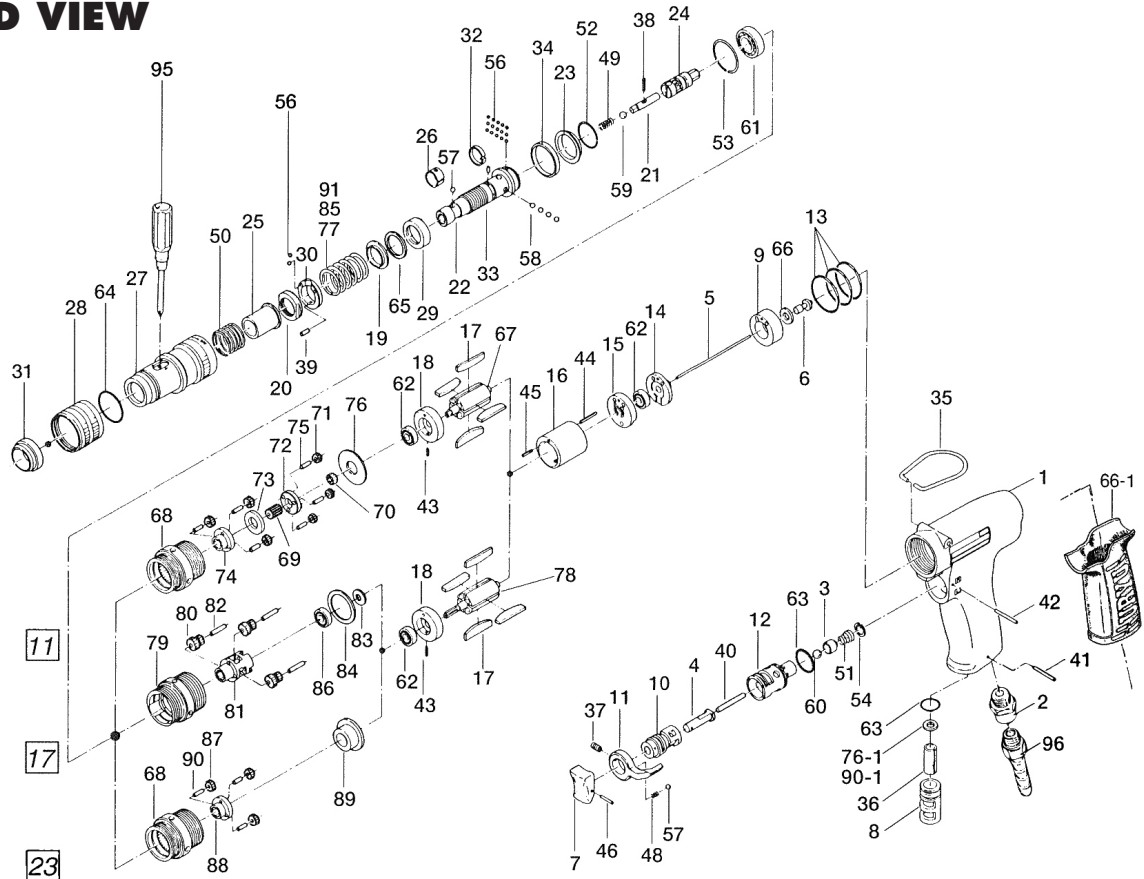


US-LT31PB-11, -17, -23 PISTOL-TYPE SCREWDRIVERS

EXPLODED VIEW



PARTS LIST — FOR REFERENCE ONLY

| Index Number | Part Number | Description | Qty. | Index Number | Part Number | Description | Qty. | Index Number | Part Number | Description | Qty. |
|--------------|-------------|-------------------------------|------|-------------------------|-------------|-----------------------------|------|-------------------------|-------------|-----------------------------------|------|
| 1 | 442-025-5 | Casing | 1 | 39 | 970-091-0 | Pin (H) (2 x 4.5) | 1 | 76 | 975-178-0 | Spacer (26 x 10 x 1.5) | 1 |
| 2 | 480-091-8 | Air Inlet Bushing | 1 | 40 | 970-228-0 | Pin (H) (3 x 28) | 1 | 76-1 | 996-403-0 | Urethane Packing (11.5 x 4 x 2) | 1 |
| 3 | 480-100-9 | Valve | 1 | 41 | 971-122-0 | Pin (2 x 22) | 1 | 77 | 976-472-0 | Spring (20.6 x 22) (Standard) | 1 |
| 4 | 443-103-5 | Valve Rod Bushing | 1 | 42 | 971-123-0 | Pin (2 x 23) | 1 | 77-1 | 976-493-0 | Spring (20.8 x 22) (Weaker) | 1 |
| 5 | 442-104-4 | Valve Rod | 1 | 43 | 973-001-0 | Roll Pin (1.5 x 6) | 1 | 77-2 | 976-471-0 | Spring (19.4 x 22) (Weaker) | 1 |
| 6 | 443-254-5 | Shut-Off Valve | 1 | 44 | 973-002-0 | Roll Pin (1.5 x 15) | 1 | 77-3 | 976-504-0 | Spring (22 x 22) (Strong) | 1 |
| 7 | 177-107-5 | Valve Lever | 1 | 45 | 973-003-0 | Roll Pin (1.5 x 8) | 1 | FOR US-LT31PB-17 | | | |
| 8 | 480-780-8 | Exhaust Stack | 1 | 46 | 973-012-0 | Roll Pin (2 x 12) | 1 | 78 | 471-287-5 | Rotor | 1 |
| 9 | 442-282-5 | Shut-Off Valve Bushing | 1 | 48 | 976-006-0 | Spring (3 x 5) (0.4) | 1 | 79 | 462-029-6 | Gear Casing | 1 |
| 10 | 480-210-9 | Reverse Valve | 1 | 49 | 976-058-0 | Spring (4.5 x 11) (0.4) | 1 | 80 | 471-470-6 | Planet Gear | 3 |
| 11 | 098-212-5 | Reverse Lever | 1 | 50 | 976-450-0 | Spring (18.5 x 10) (1.0) | 1 | 81 | 471-480-5 | Gear Cage | 1 |
| 12 | 480-211-9 | Reverse Valve Bushing | 1 | 51 | 977-150-0 | Cone Spring (6.8 x 8.5 x 8) | 1 | 82 | 972-036-0 | Roller Pin (2.5 x 15.8A) | 3 |
| 13 | 990-917-0 | O-Ring (SNS-24) | 3 | 52 | 978-185-0 | Snap Ring (19 x 1) | 1 | 83 | 975-009-0 | Spacer (9 x 5.2 x 0.3) | 1 |
| 14 | 442-291-4 | Rear Plate Spacer | 1 | 53 | 978-229-0 | Snap Ring (23 x 1) | 1 | 84 | 975-188-0 | Spacer (26 x 20 x 1.5) | 1 |
| 15 | 471-285-7 | Rear Plate | 1 | 54 | 979-002-0 | Inner Snap Ring (9) | 1 | 76-1 | 996-403-0 | Urethane Packing (1.5 x 4 x 2) | 1 |
| 16 | 442-286-4 | Cylinder | 1 | 56 | 981-001-0 | Ball (3/32) | 17 | 85 | 976-493-0 | Spring (20.8 x 22) (Standard) | 1 |
| 17 | 471-288-0 | Blade (PC) | 4 | 57 | 981-002-0 | Ball (1/8) | 2 | 85-1 | 976-471-0 | Spring (19.4 x 22) (Weak) | 1 |
| 18 | 471-289-7 | Front Plate | 1 | 58 | 981-003-0 | Ball (5/32) | 4 | 85-2 | 976-472-0 | Spring (21 x 22) (Strong) | 1 |
| 19 | 471-164-8 | Spring Holder | 1 | 59 | 981-004-0 | Ball (3/16) | 1 | 86 | 987-013-0 | Mini Ball Bearing (R-1350) | 1 |
| 20 | 471-257-7 | Regulator Screw | 1 | 60 | 981-206-0 | Ball (1/4) | 1 | FOR US-LT31PB-23 | | | |
| 21 | 471-318-5 | Pilot Pin | 1 | 61 | 982-901-0 | Ball Bearing (6900) | 1 | 78 | 471-287-5 | Rotor | 1 |
| 22 | 471-319-2 | Anvil | 1 | 62 | 987-041-0 | Mini Ball Bearing (1350ZZ) | 2 | 68 | 462-029-8 | Gear Casing | 1 |
| 23 | 462-334-7 | Anvil Spacer | 1 | 63 | 990-912-0 | O-Ring (SNS-14) | 2 | 87 | 471-470-3 | Planet Gear | 3 |
| 24 | 471-346-5 | Cam | 1 | 64 | 990-919-0 | O Ring (SNS-22) | 1 | 88 | 471-480-3 | Gear Cage | 1 |
| 25 | 471-351-6 | Bit Sleeve | 1 | 65 | 944-016-0 | Back-Up Ring (P16) | 1 | 89 | 471-483-3 | Gear Cage Spacer | 1 |
| 26 | 471-356-7 | Bit Band | 1 | 66 | 996-411-0 | Packing (11 x 6 x 1) | 1 | 90 | 972-033-0 | Roller Pin (2.5 x 8) | 3 |
| 27 | 462-369-7 | Clutch Casing | 1 | 66-1 | 174-842-8 | Handle Cover | 1 | 90-1 | 996-402-0 | Urethane Packing (11.5 x 3.7 x 2) | 1 |
| 28 | 471-370-7 | Clutch Casing Sleeve | 1 | FOR US-LT31PB-11 | | | | 91 | 976-471-0 | Spring (19.4 x 22) (Standard) | 1 |
| 29 | 471-375-8 | Cam Ring | 1 | 67 | 471-287-7 | Rotor | 1 | 91-1 | 976-493-0 | Spring (20.8 x 22) (Strong) | 1 |
| 30 | 471-562-7 | Retainer | 1 | 68 | 462-029-8 | Gear Casing | 1 | ACCESSORIES | | | |
| 31 | 471-567-6 | Bushing | 1 | 69 | 471-445-7 | Middle Gear | 1 | 95 | 939-402-0 | Screwdriver (No.2) | 1 |
| 32 | 471-670-7 | Band | 1 | 70 | 471-460-7 | Rotor Gear | 1 | 96 | 940-113-0 | Air Hose Nipple (NPT1/4 x 1/4) | 1 |
| 33 | 471-764-7 | Notch Pin | 1 | 71 | 471-471-7 | Second Planet Gear | 6 | | | | |
| 34 | 462-397-7 | Back-Up Spacer | 1 | 72 | 471-480-7 | First Gear Cage | 1 | | | | |
| 35 | 010-790-1 | Suspension Ring | 1 | 73 | 471-483-7 | Gear Cage Spacer | 1 | | | | |
| 36 | 177-835-6 | Filter (10 x 6 x 25) | 1 | 74 | 471-485-7 | Second Gear Cage | 1 | | | | |
| 37 | 952-106-0 | Allen H. D. P. Screw (M4 x 6) | 1 | 75 | 972-033-0 | Roller Pin (2.5 x 8) | 6 | | | | |
| 38 | 969-470-0 | Pin (2 x 8) | 1 | | | | | | | | |

FOOTNOTES



10000 SE PINE
PORTLAND, OR 97216
503-254-6600
FAX 503-255-2615

When ordering spare parts, please specify
tool type, part number, and description.