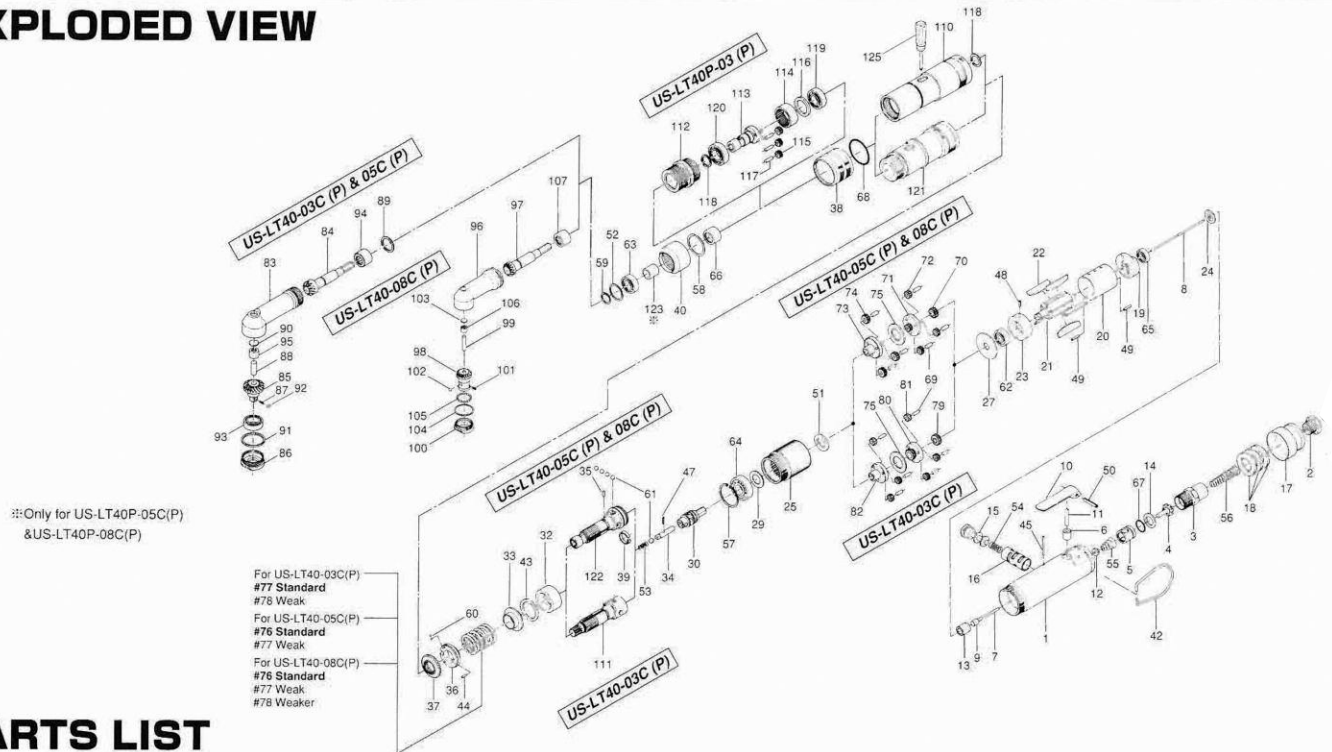


US-LT40-03C(P), -05C(P) & -08C(P) SCREWDRIVERS

EXPLODED VIEW



PARTS LIST

Index No.	Code No.	Parts Name	Quantity	Index No.	Code No.	Parts Name	Quantity	Index No.	Code No.	Parts Name	Quantity
Common Parts											
# 1	461-025-6	Casing	1	#50	973-118-0	Roll Pin (3X18)	1	#87	976-346-0	Spring (2.9X6.35)	1
# 2	480-091-8	Air Inlet Bushing	1	#51	975-106-0	Spacer (18.5X11X1)	1	#88	972-216-0	Roller Pin (6X16)	1
# 3	461-097-6	Air Inlet Connector	1	#52	975-768-0	Adjusting Spacer (19X16.2Xt)	1	#89	975-113-0	Spacer (19X15X1.5)	1
# 4	259-100-0	Valve	1	#53	976-058-0	Spring (4.5X11)	1	#90	975-593-0	Round Plate (10X1)	1
# 5	461-102-6	Valve Bushing	1	#54	976-147-0	Spring (7X12)	1	#91	975-787-0	Adjusting Spacer (26X24Xt)	1
# 6	553-103-1	Valve Rod Bushing	1	#55	977-071-0	Cone Spring (5.5X11.5X15)	1	#92	981-002-0	Ball (1/8)	1
# 7	970-108-0	Pin (H)(2X26.8)	1	#56	977-155-0	Cone Spring (7X10X35)	1	#93	982-870-0	Ball Bearing (6801)	1
# 8	463-104-7	Valve Rod	1	#57	979-326-0	Inner Snap Ring (IRTW-26)	1	#94	988-008-0	Needle Roller Bearing NK10	1
# 9	444-106-8	Valve Rod Cap	1	#58	979-190-0	Outer Snap Ring (22)	1	#95	988-380-0	Needle Roller Bearing (F68)	1
#10	700-107-1	Valve Lever	1	#59	979-351-0	Inner Snap Ring (ISTW-10)	1	For US-LT40-08C(P)			
#11	461-114-6	Valve Pin	1	#60	981-001-0	Ball (3/32)	2	#96	469-441-7	Angle Casing	1
#12	259-254-0	Shut-off Valve	1	#61	981-004-0	Ball (3/16)	5	#97	469-420-5	Driving Gear	1
#13	461-567-6	Filter (K-50)	1	#62	982-063-0	Ball Bearing (606ZZ)	1	#98	469-430-8	Driven Gear(P)	1
#14	996-424-0	Packing (16X9X2)	1	#63	982-035-0	Ball Bearing (698)	1	#99	469-431-6	Driven Gear Spindle	1
#15	893-057-1	Reverse Valve Lock	1	#64	982-100-0	Ball Bearing (6000)	1	#100	469-488-5	Angle Head Casing Cover	1
#16	472-211-7	Reverse Valve Bushing	1	#65	987-039-0	Mini Ball Bearing (R1560ZZ)	1	#101	976-346-0	Spring (2.9X6.35)	1
#17	472-782-7	Exhaust Deflector	1	#66	988-394-0	Needle Roller Bearing (1210)	1	#102	981-002-0	Ball (1/8)	1
#18	161-835-4	Filter (K-50)	3	#67	990-911-0	O-Ring (SNS-12)	1	#103	975-590-0	Round Plate (6.3X1)	1
#19	467-285-7	Rear Plate	1	#68	990-923-0	O-Ring (SNS-26)	1	#104	975-771-0	Adjusting Spacer (20X18Xt)	1
#20	472-286-7	Cylinder	1	#76	976-515-0	Spring (22.7X28)	1	#105	981-000-0	Ball (1/16)	26
#21	472-287-7	Rotor	1	#77	976-516-0	Spring (22.1X28)	1	#106	988-090-0	Needle Roller Bearing (B-24)	1
#22	472-288-0	Blade (PC)	5	#78	976-517-0	Spring (21.5X31)	1	#107	988-689-0	Needle Roller Bearing (1010)	1
#23	472-289-7	Front Plate	1	Gear Section				Parts for US-LT40-03C(P)			
#24	461-291-6	Rear Plate Spacer	1	For US-LT40-03C(P)				#110	461-369-7	Clutch Casing	1
#25	472-029-7	Gear Casing	1	#69	972-089-0	Roller Pin (3X8)	6	#111	461-654-7	Cam Guide	1
#27	472-807-7	Spacer	1	#75	496-483-1	Gear Cage Spacer	1	#112	461-082-8	Connecting Screw	1
#29	461-344-6	Cam Retainer	1	#79	472-460-5	Rotor Gear	1	#113	462-319-9	Anvil	1
#30	472-346-5	Cam	1	#80	472-480-5	First Gear Cage	1	#114	462-466-9	Second Internal Gear	1
#32	472-375-7	Cam Ring	1	#81	472-470-5	First Planet Gear	6	#115	462-471-9	Second Planet Gear	3
#33	472-379-8	Retainer	1	#82	472-485-5	Second Gear Cage	1	#116	462-487-9	Second Gear Cage Spacer	1
#34	471-318-5	Pilot Pin	1	For US-LT40-05C(P) & 08C(P)				#117	972-090-0	Roller Pin (3X10)	3
#35	471-764-7	Notch Pin	1	#69	972-089-0	Roller Pin (3X8)	6	#118	979-353-0	Inner Snap Ring (ISTW-12)	2
#36	472-562-8	Spring Holder	1	#70	472-460-7	Rotor Gear	1	#119	982-901-0	Ball Bearing (6900)	1
#37	472-257-8	Regulating Screw	1	#71	472-480-7	First Gear Cage	1	#120	982-902-0	Ball Bearing (6901)	1
#38	472-370-7	Clutch Casing Sleeve	1	#72	472-470-7	First Planet Gear	3	Parts for US-LT40-05C(P) & 08C(P)			
#39	471-670-7	Band	1	#73	472-485-7	Second Gear Cage	1	#121	461-369-8	Clutch Casing	1
#40	469-081-6	Locking Nut	1	#74	472-471-7	Second Planet Gear	3	#122	472-319-7	Anvil	1
#42	010-790-1	Suspension Ring	1	#75	496-483-1	Gear Cage Spacer	1	#123	469-807-5	Spacer	1
#43	944-019-0	Back-up Ring (P-19)	1	Angle Head Section				ACCESSORIES			
#44	970-092-0	Pin (H)(2X5.5)	1	For US-LT40-03C(P) & 05C(P)				#125	939-402-0	Manual Driver (No. 2)	1
#45	970-105-0	Pin (H)(2X24)	1	#83	461-441-8	Angle Casing	1				
#47	969-470-0	Pin (2X8)	1	#84	461-420-7	Driving Gear	1				
#48	973-006-0	Roll Pin (2X6)	1	#85	461-430-8	Driven Gear(P)	1				
#49	973-010-0	Roll Pin (2X10)	2	#86	461-488-7	Angle Head Casing Cover	1				



10000 SE PINE ST,
PORTLAND, OR 97216
503-254-6600
FAX 503-255-2615

When ordering spare parts, please specify
tool type, part number and description.

NOTES

AIMCO also offers a complete line of standard & special adapters, bits, sockets and extensions.