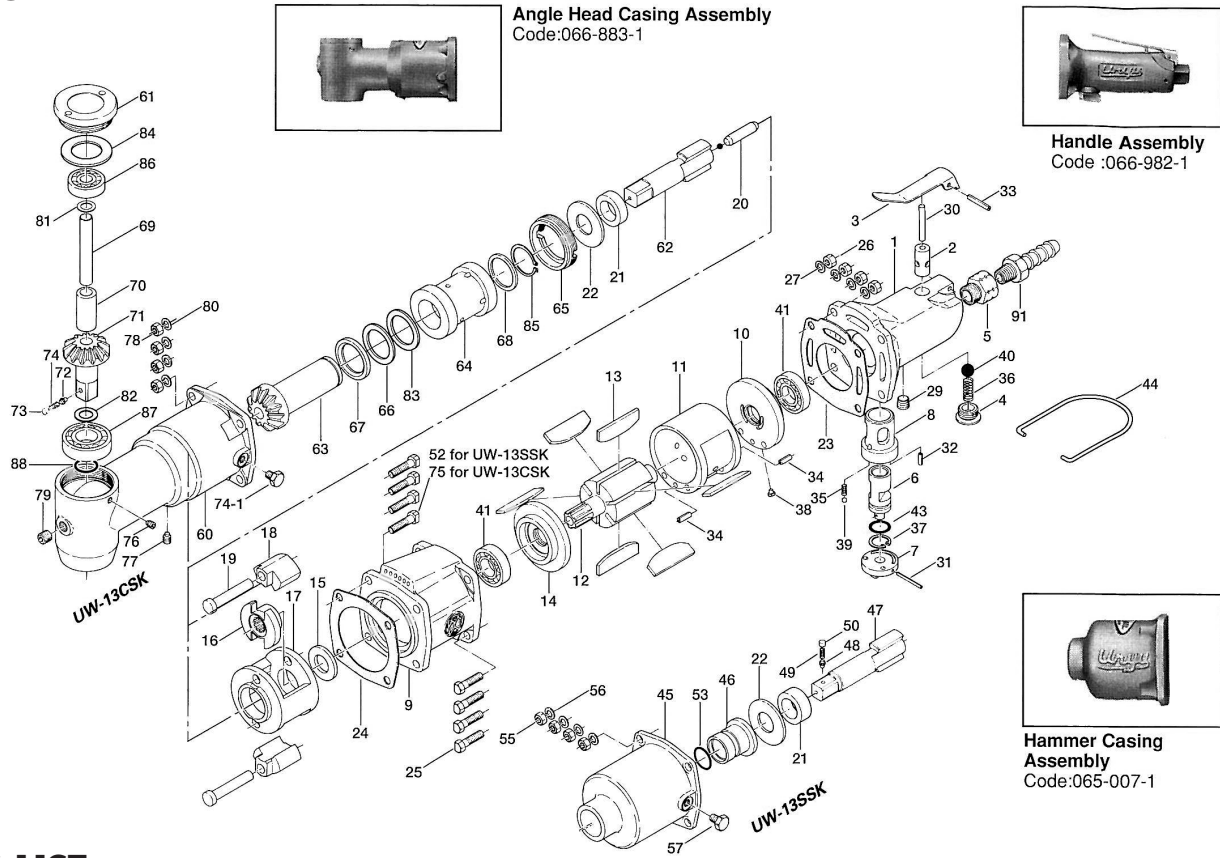


UW-13SSK & UW-13CSK IMPACT WRENCHES

EXPLODED VIEW



PARTS LIST — FOR REFERENCE ONLY

| Index Number | Part Number | Description | Qty. | Index Number | Part Number | Description | Qty. | Index Number | Part Number | Description | Qty. |
|--------------|-------------|--------------------------|------|-----------------------------|-------------|----------------------------|------|--------------|-------------|-----------------------------|------|
| 1 | 066-011-2 | Handle | 1 ● | 31 | 973-026-0 | Roll pin (2 x 26) | 1 ● | 61 | 066-067-1 | Angle Head Casing Cover | 1 ▲ |
| 2 | 063-102-1 | Valve Bushing | 1 ● | 32 | 973-108-0 | Roll Pin (3 x 8) | 1 ● | 62 | 066-319-1 | Anvil | 1 |
| 3 | 066-107-1 | Throttle Trigger | 1 ● | 33 | 973-124-0 | Roll Pin (3 x 24) | 1 ● | 63 | 066-420-1 | Driving Gear | 1 ▲ |
| 4 | 066-108-1 | Valve Plug | 1 ● | 34 | 973-212-0 | Roll Pin (4 x 12) | 2 | 64 | 066-421-1 | Driving Gear Bushing | 1 |
| 5 | 185-091-7 | Air Inlet Bushing | 1 ● | 35 | 976-032-0 | Spring (3.6 x 13) | 1 ● | 65 | 066-422-1 | Driving Gear Bushing Screw | 1 |
| 6 | 066-210-1 | Reverse Valve | 1 ● | 36 | 977-220-0 | Cone Spring (9 x 10 x 25) | 1 ● | 66 | 066-423-7 | Driving Gear Bushing Spacer | 1 ▲ |
| 7 | 066-212-1 | Reverse Lever | 1 ● | 37 | 979-011-0 | Inner Snap Ring (18) | 1 ● | 67 | 066-424-1 | Driving Gear Spacer (Large) | 1 ▲ |
| 8 | 066-211-1 | Reverse Valve Bushing | 1 ● | 38 | 980-008-0 | Round Head Notch (2.4) | 1 | 68 | 066-425-1 | Driving Gear Spacer | 1 ▲ |
| 9 | 066-025-1 | Casing | 1 | 39 | 981-003-0 | Ball (5/32) | 1 ● | 69 | 066-431-1 | Driven Gear Spindle | 1 ▲ |
| 10 | 063-285-7 | Rear Plate | 1 | 40 | 981-210-0 | Ball (3/8) | 1 ● | 70 | 066-432-1 | Driven Gear Spindle Collar | 1 ▲ |
| 11 | 063-286-7 | Cylinder | 1 | 41 | 982-404-0 | Ball Bearing (EE-5) | 2 | 71 | 164-430-1 | Driven Gear (P) | 1 ▲ |
| 12 | 063-287-1 | Rotor | 1 | 43 | 990-014-0 | O-Ring (P-14) | 1 ● | 72 | 153-800-2 | Socket Retainer Pin | 1 ▲ |
| 13 | 063-288-1 | Blade | 6 | 44 | 201-790-1 | Suspension Ring | 1 | 73 | 971-302-0 | Pin (4 x 2) | 1 ▲ |
| 14 | 063-289-7 | Front Plate | 1 | | | | | 74 | 976-034-0 | Spring (3.6 x 11) | 1 ▲ |
| 15 | 076-310-1 | Anvil Rear Spacer | 1 | PARTS FOR UW - 13SSK | | | | 74-1 | 945-962-0 | Hexagon Head Bolt (M6 x 6) | 1 |
| 16 | 063-311-1 | Hammer Cam | 1 | 45 | 065-028-1 | Hammer Casing | 1 ■ | 75 | 947-224-0 | Half Head Bolt (M6 x 24) | 4 |
| 17 | 063-312-1 | Hammer Cage | 1 | 46 | 063-328-1 | Anvil Bushing | 1 ■ | 76 | 953-205-0 | Allen Head Screw (M5 x 5) | 1 ▲ |
| 18 | 063-313-1 | Hammer | 2 | 47 | 161-319-1 | Anvil (P) | 1 | 77 | 953-308-0 | Allen Head Screw (M6 x 8) | 1 ▲ |
| 19 | 063-317-1 | Hammer Pin | 2 | 48 | 153-800-2 | Socket Retainer Pin (Flat) | 1 | 78 | 960-040-0 | Hexagon Nut (1-M6) | 4 |
| 20 | 063-318-1 | Pilot Pin | 1 | 49 | 976-034-0 | Spring (3.6 x 11) | 1 | 79 | 966-100-0 | Allen Head Plug (1/8) | 1 ▲ |
| 21 | 063-326-1 | Hammer Cage Bushing | 1 | 50 | 971-302-0 | Pin (4 x 2) | 1 | 80 | 962-009-0 | Spring Washer (2-6S) | 4 |
| 22 | 063-327-1 | Anvil Front Spacer | 1 | 52 | 947-222-0 | Half Head Bolt (M6 x 22) | 4 | 81 | 975-752-0 | Spacer (15 x 10 x t) | 1 ▲ |
| 23 | 066-851-1 | Rear Packing | 1 | 53 | 993-035-0 | Felt Ring (18 x 23 x 2) | 1 ■ | 82 | 975-792-0 | Spacer (23 x 17.5 x t) | 1 ▲ |
| 24 | 066-857-1 | Front Packing | 1 | 55 | 960-040-0 | Hexagon Nut (1-M6) | 4 | 83 | 975-869-0 | Spacer (43 x 39 x t) | 1 ▲ |
| 25 | 947-224-0 | Half Head Bolt (M6 x 24) | 4 | 56 | 962-009-0 | Spring Washer (2-6S) | 4 | 84 | 975-887-0 | Spacer (50 x 46 x t) | 1 ▲ |
| 26 | 960-040-0 | Hexagon Nut (1-M6) | 4 | 57 | 945-962-0 | Hexagon Bolt (M6 x 6) | 1 ■ | 85 | 979-123-0 | Outer Snap Ring (26) | 1 ▲ |
| 27 | 961-013-0 | Flat Washer (6 mm) | 4 | | | | | 86 | 982-200-0 | Ball Bearing (6200) | 1 ▲ |
| 29 | 966-100-0 | Allen Head Plug (1/8) | 1 ● | PARTS FOR UW - 13CSK | | | | 87 | 982-203-0 | Ball Bearing (6203) | 1 ▲ |
| 30 | 970-328-0 | Pin (H) (4 x 27) | 1 ● | 60 | 066-028-1 | Angle Head Casing | 1 ▲ | 88 | 990-017-0 | O-Ring (P-18) | 1 ▲ |



10000 SE PINE
PORTLAND, OR 97216
503-254-6600
FA x 503-255-2615

When ordering spare parts, please specify
tool type, part number, and description.

FOOTNOTES

- = Components in Handle Assembly 066-982-1
- = Components in Hammer Casing Assembly 065-007-1
- ▲ = Components in Angle Head Casing Assembly 066-863-1