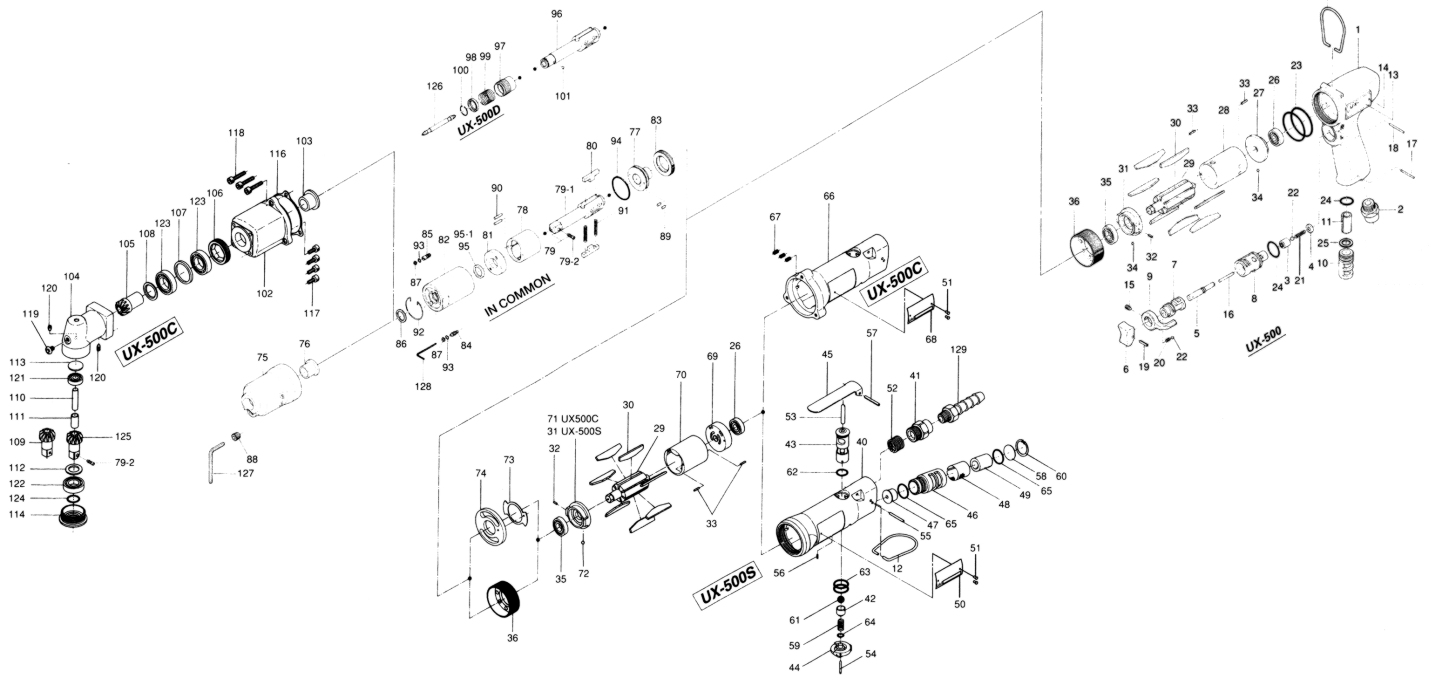


# UX-500, 500C, 500D, 500S, & 500SD SERIES OIL-PULSE WRENCHES

## EXPLODED VIEW



## PARTS LIST — FOR REFERENCE ONLY

Index Number	Part Number	Description	Qty.
<b>UX-500 SERIES PISTOL HANDLE</b>			
1	177-025-5	Handle UX-500	1
2	480-091-8	Air Inlet Bushing	1
3	850-365-1	Valve	1
4	850-366-1	Valve Cover	1
5	427-103-5	Valve Rod Bushing	1
6	177-107-5	Valve Lever	1
7	480-210-9	Reverse Valve	1
8	850-382-1	Reverse Valve Bushing	1
9	098-212-5	Reverse Lever	1
10	480-780-8	Exhaust Stack	1
11	177-835-6	Filter	1
12	010-790-1	Suspension Ring	1
13	177-924-5	Name Plate UX-500	1
14	930-205-0	Driver Rivet (No.0 x 2.6)	2
15	952-106-0	Allen Head Screw (M4 x 6)	1
16	969-412-0	Pin (G) (2 x 12)	1
17	971-120-0	Pin (2 x 20)	1
18	971-123-0	Pin (2 x 23)	1
19	973-014-0	Roll Pin (2 x 14)	1
20	976-006-0	Spring (3 x 5)	1
21	976-229-0	Spring (3.2 x 13)	1
22	981-002-0	Ball (1/8)	2
23	990-337-0	O-Ring (JW1530-27)	2
24	990-912-0	O-Ring (SNS-14)	2
25	996-404-0	Packing (11.5 x 5 x 2)	1
26	982-401-0	Ball Bearing (EE-2)	1
27	182-285-2	Rear Plate	1
28	177-286-5	Cylinder	1
29	177-287-5	Rotor	1
30	177-288-5	Blade	1
31	182-289-2	Front Plate	1
32	973-006-0	Roll Pin (2 x 6)	1
33	973-008-0	Roll Pin (2 x 8)	2
34	981-045-0	Ball (1.5 mm)	2
35	982-402-0	Ball Bearing (EE-3)	1
36	177-036-5	Hammer Casing Connector	1
<b>UX-500S &amp; UX-500C STRAIGHT HANDLE</b>			
40	177-025-7	Casing UX-500S	1
41	180-091-6	Air Inlet Bushing	1
42	180-100-2	Valve	1
43	180-210-2	Reverse Valve	1
44	180-212-2	Reverse Lever	1
45	500-107-1	Valve Lever	1
46	194-780-4	Exhaust Stack	1
47	190-781-6	Exhaust Stack Bushing	1
48	194-042-4	Silencer	1
49	611-780-7	Filter	1
12	010-790-1	Suspension Ring	1

Index Number	Part Number	Description	Qty.
50	177-924-7	Name Plate UX-500S	1
51	930-205-0	Driver Rivet	4
52	965-073-0	Heli-Sert (UNF5/8 x N6)	1
53	970-326-0	Pin (H) (4 x 25)	1
54	973-022-0	Roll Pin (2 x 22)	1
55	971-163-0	Pin (2.5 x 23)	1
56	973-005-0	Roll Pin (2 x 5)	1
57	973-124-0	Roll Pin (3 x 24)	1
58	975-598-0	Round Plate (18 x 1)	1
59	976-147-0	Spring (7 x 12)	1
60	979-318-0	Inner Snap Ring (18)	1
61	981-208-0	Ball (5/16)	1
62	990-008-0	O-Ring (P10)	1
63	990-014-0	O-Ring (P14)	1
64	990-322-0	O-Ring (ARP568-107)	1
65	990-914-0	O-Ring (SNS-16)	1
66	177-025-9	Casing UX-500C	1
67	965-006-0	Heli-Sert (M4 x 1.5D)	1
68	177-924-9	Name Plate UX-500C	1
26	982-401-0	Ball Bearing (EE-2)	1
69	180-285-2	Rear Plate	1
70	177-286-7	Cylinder	1
79	177-287-5	Rotor	1
30	177-288-5	Blade	1
31	182-289-2	Front Plate	1
34	981-045-0	Ball (1.5 mm)	2
71	177-289-9	Front Plate UX-500C	1
32	973-006-0	Roll Pin (2 x 6)	1
33	973-008-0	Roll Pin (2 x 8)	2
72	981-045-0	Ball (1.5)	1
35	982-402-0	Ball Bearing (EE-3)	1
73	179-856-3	Separator Packing	1
74	177-027-9	Separator	1
36	177-036-5	Hammer Casing Connector	1
<b>COMMON PARTS</b>			
75	177-439-5	Front Casing	1
76	190-328-6	Anvil Bushing	1
77	196-901-4	Rear Liner Plate	1
78	177-902-5	Liner	1
79	891-307-1	Anvil Assembly (OP-P)	1
79-1	177-319-5	Anvil	1
79-2	891-300-1	Socket Pin Assembly	1
80	177-440-5	Driving Blade	2
81	178-904-8	Liner Front Plate	1
82	177-905-6	Liner Casing	1
83	190-906-6	Liner Setting Setter	1
84	174-907-8	Relief Valve Spindle	1
85	178-742-0	Oil Plug	1
86	178-327-0	Anvil Front Spacer	1

Index Number	Part Number	Description	Qty.
87	944-002-0	Support Ring (2.6 x 4.5 x 1)	2
88	966-099-0	Allen Head Plug (NPT1/16)	1
89	970-130-0	Pin (H) (2.45 x 4.5) 2	2
90	970-135-0	Pin (H) (2.45 x 11) 2	2
91	976-791-0	Spring (3.3 x 21) WPC	2
92	978-282-0	Snap Ring (28 x 1.0)	1
93	990-320-0	O-Ring (ARP568-003)	2
94	990-329-0	O-Ring (JW1530-19)	1
95	992-020-0	SU-Ring	1
95-1	944-213-0	Supporter Ring (12 x 16 x 1)	1
<b>PARTS FOR UX-500D (DRIVER TYPE)</b>			
96	177-350-7	Driver Anvil	1
97	011-351-1	Bit Sleeve	1
98	011-352-1	Bit Spacer	1
99	976-327-0	Spring (13.5 x 11)	1
100	978-117-0	Snap Ring (11.7 x 1.0)	1
101	981-002-0	Ball (1/8)	1
<b>PARTS FOR UX-500C</b>			
102	177-439-9	Front Casing	1
103	185-328-2	Anvil Bushing	1
104	179-441-3	Angle Head Casing	1
105	179-420-3	Driving Gear	1
106	179-422-3	Driving Gear Bush Screw	1
107	179-423-3	Driving Gear Bush Spacer	1
108	179-425-3	Driving Gear Spacer	1
109	008-430-1	Driven Gear (0)	1
110	008-431-1	Driven Gear Spindle	1
111	008-432-1	Driven Gear Collar	1
112	008-433-1	Driven Gear Spacer	1
113	179-391-5	Spindle Rear Cover	1
114	179-488-3	Angle Head Cover	1
116	179-854-3	Handle Packing	1
117	945-010-0	Allen Head Bolt (M4 x 10)	4
118	945-012-0	Allen Head Bolt (M4 x 12)	3
119	945-949-0	Hexagon Head Bolt (M5 x 6)	1
120	954-105-0	Allen Head Screw (M4 x 5)	2
121	982-013-0	Ball Bearing (606)	1
122	982-902-0	Ball Bearing (6901)	1
123	982-903-0	Ball Bearing (6902)	2
124	990-910-0	O-Ring (SNS12.5)	1
125	891-345-1	Driven Gear (P) Assembly	1
<b>ACCESSORIES</b>			
126	916-810-0(+)	Double Bit (No2 x 75)	1
127	939-105-0	Allen Wrench (4)	1
128	939-091-0	Allen Wrench (1.5)	1
129	940-114-0	Air Hose Nipple	1



10000 SE PINE  
PORTLAND, OR 97216  
503-254-6600  
FAX 503-255-2615

When ordering spare parts, please specify  
tool type, part number, and description.

### FOOTNOTES

- = Items in Pulse Repair Kit UX-500-PRK
- = Items in Repair Kit UX-500-RK