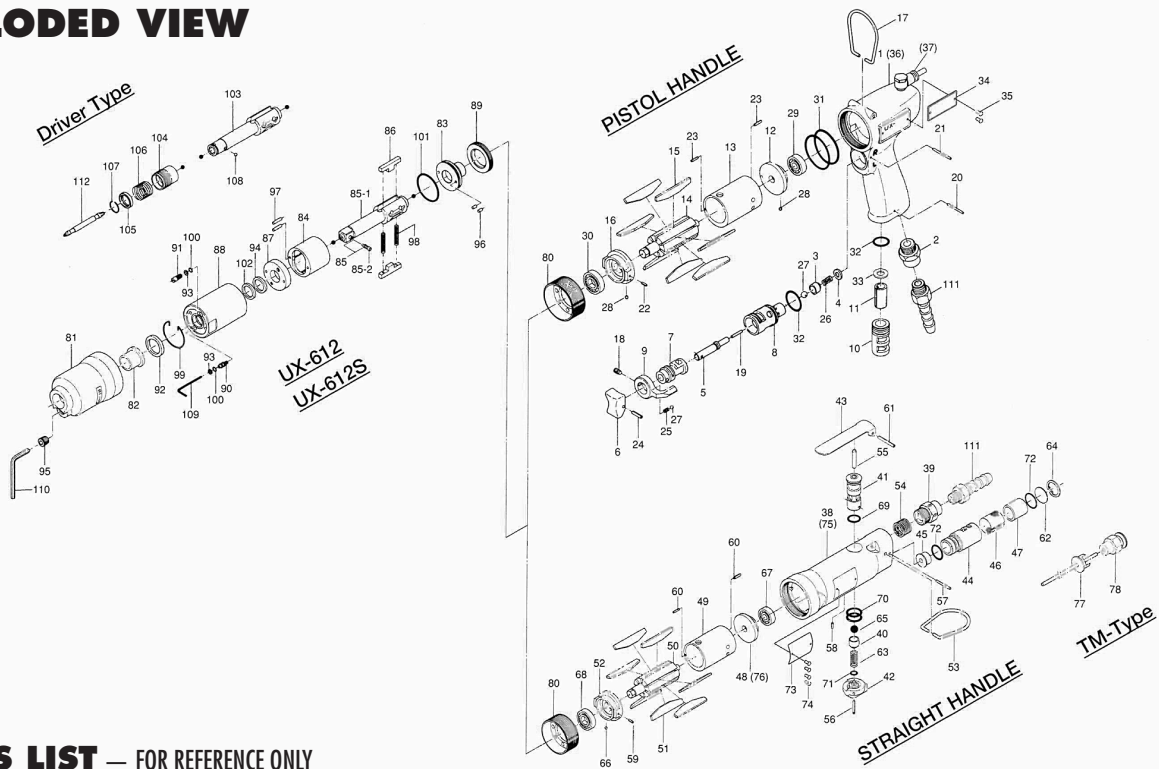


UX-612, -612D, -612S, -612SD OIL-PULSE WRENCHES

EXPLODED VIEW



PARTS LIST — FOR REFERENCE ONLY

Index Number	Part Number	Description	Qty.
--------------	-------------	-------------	------

UX-612 COMPONENTS

1	178-025-8	Handle	1
2	480-091-8	Air Inlet Bushing	1
3	850-365-1	Valve	1
4	850-366-1	Valve Cover	1
5	427-103-5	Valve Rod Bushing	1
6	177-107-5	Valve Lever	1
7	480-210-9	Reverse Valve	1
8	850-382-1	Reverse Valve Bushing	1
9	098-212-5	Reverse Lever	1
10	480-780-8	Exhaust Stack	1
11	177-835-6	Filter	1 ■
12	182-285-2	Rear Plate	1
13	178-286-8	Cylinder	1
14	196-287-4	Rotor	1
15	150-288-9	Blade	7 ■
16	182-289-2	Front Plate	1
17	010-790-1	Suspension Ring	1
18	952-106-0	Allen Head Screw (M4 x 6)	1
19	969-412-0	Pin (G) (2 x 12)	1
20	971-120-0	Pin (2 x 20)	1
21	971-123-0	Pin (2 x 23)	1
22	973-006-0	Roll Pin (2 x 6)	1
23	973-008-0	Roll Pin (2 x 8)	2
24	973-014-0	Roll Pin (2 x 14)	1
25	976-006-0	Spring (3 x 5)	1
26	976-229-0	Spring (3.2 x 13)	1
27	981-002-0	Ball (1/8)	2
28	981-045-0	Ball (1.5)	2
29	982-401-0	Ball Bearing (EE-2)	1 ■
30	982-402-0	Ball Bearing (EE-3)	1 ■
31	990-337-0	O-Ring (JW-1 530-27)	2 ■
32	990-912-0	O-Ring (SNS-14)	2
33	996-405-0	Urethane Packing (11.5 x 6 x 2)	1
34	178-924-8	Name Plate	1
35	930-205-0	Driver Rivet	2
(TM-Type Components)			
36	850-602-1	Handle (TM-Type)	1
37	933-275-0	One touch Connector	1

UX-612S COMPONENTS

38	179-025-0	Casing	1
39	180-091-6	Air Inlet Bushing	1
40	180-100-2	Valve	1

Index Number	Part Number	Description	Qty.
--------------	-------------	-------------	------

41	180-210-2	Reverse Valve	1
42	180-212-2	Reverse Lever	1
43	500-107-1	Valve Lever	1
44	194-780-4	Exhaust Stack	1
45	190-781-6	Exhaust Stack Bushing	1
46	194-042-4	Silencer	1
47	611-780-7	Filter	1
48	180-285-2	Rear Plate	1
49	180-286-2	Cylinder	1
50	196-287-4	Rotor	1
51	150-288-9	Blade	7
52	182-289-2	Front Plate	1
53	010-790-1	Suspension Ring	1
54	965-073-0	Heli-vert (UNF5/8)	1
55	970-326-0	Pin (H) (4 x 25)	1
56	973-022-0	Roll Pin (2 x 22)	1
57	971-163-0	Pin (2.5 x 23)	1
58	973-005-0	Roll Pin (2 x 5)	1
59	973-006-0	Roll Pin (2 x 6)	1
60	973-008-0	Roll Pin (2 x 8)	2
61	973-124-0	Roll Pin (3 x 24)	1
62	975-598-0	Round Plate (18 x 1)	1
63	976-147-0	Spring (7 x 12)	1
64	979-318-0	Inner Snap Ring (IRTW-18)	1
65	981-208-0	Ball (5/16)	1
66	981-045-0	Ball (1.5)	1
67	982-401-0	Ball Bearing (EE-2)	1
68	982-402-0	Ball Bearing (EE-3)	1
69	990-008-0	O-Ring (P10)	1
70	990-014-0	O-Ring (P14)	2
71	990-322-0	O-Ring (APR568-107)	1
72	990-914-0	O-Ring (SNS-16)	2
73	179-924-0	Name Plate	1
74	930-205-0	Driver Rivet	4
(TM-Type Components)			
75	850-604-1	Casing (TM-Type)	1
76	850-605-1	Rear Plate	1
77	850-722-1	Connector	1
78	933-266-0	One touch Connector	1
79	935-240-0	Nylon Tube (18NY)	1

COMMON PARTS

80	177-036-5	Hammer Casing Connector	1
81	178-439-8	Front Casing	1

Index Number	Part Number	Description	Qty.
--------------	-------------	-------------	------

82	190-328-6	Anvil Bushing	1
83	196-901-4	Rear Liner Plate	1
84	190-902-6	Liner	1
85	891-316-1	Anvil Assembly (P)	1
85-1	178-319-8	Anvil	1
85-2	891-300-1	Socket Pin Assembly	1
86	190-440-6	Driving Blade	2
87	178-904-8	Front Liner Plate	1
88	178-905-9	Liner Casing	1
89	190-906-6	Liner Casing Setter	1
90	174-907-8	Relief Valve Spindle	1
91	178-742-0	Oil Plug	1
92	178-327-0	Anvil Front Spacer	1
93	944-002-0	Back-up Ring (2.6 x 4.5 x 1)	2 ●
94	944-213-0	Back-up Ring (12 x 16 x 1.0)	1 ●
95	966-099-0	Allen Head Plug (NPT1/16)	1
96	970-130-0	Pin (H) (2.45 x 4.5)	2
97	970-135-0	Pin (H) (2.45 x 11)	2
98	976-792-0	Spring (3.5 x 21) WPC	2 ●
99	978-282-0	Snap Ring (28 x 1.0)	1
100	990-320-0	O-Ring (APR568-003)	2 ●
101	990-329-0	O-Ring (JW1530-19)	1 ●

UX-612D, UX-612SD COMPONENTS

102	992-020-0	SU-Ring (Q12)	1 ●
103	178-350-0	Driver Anvil	1
104	011-351-1	Bit Sleeve	1
105	011-352-1	Bit Spacer	1
106	976-327-0	Spring (13.5 x 11)	1
107	978-117-0	Snap Ring (11.7 x 1.0)	1
108	981-002-0	Ball (1/8)	1

ACCESSORIES

109	939-091-0	Allen Wrench (1.5)	1
110	939-105-0	Allen Wrench (4)	1
(For Driver Anvil)			
112	916-810-0	(+) Double Bit (No. 2 x 75)	1

FOOTNOTES

- = Items in Pulse Repair Kit UX-612-PRK
- = Items in Repair Kit UX-612-RKOF



10000 SE PINE
PORTLAND, OR 97216
503-254-6600
FAX 503-255-2615

When ordering spare parts, please specify
tool type, part number, and description.