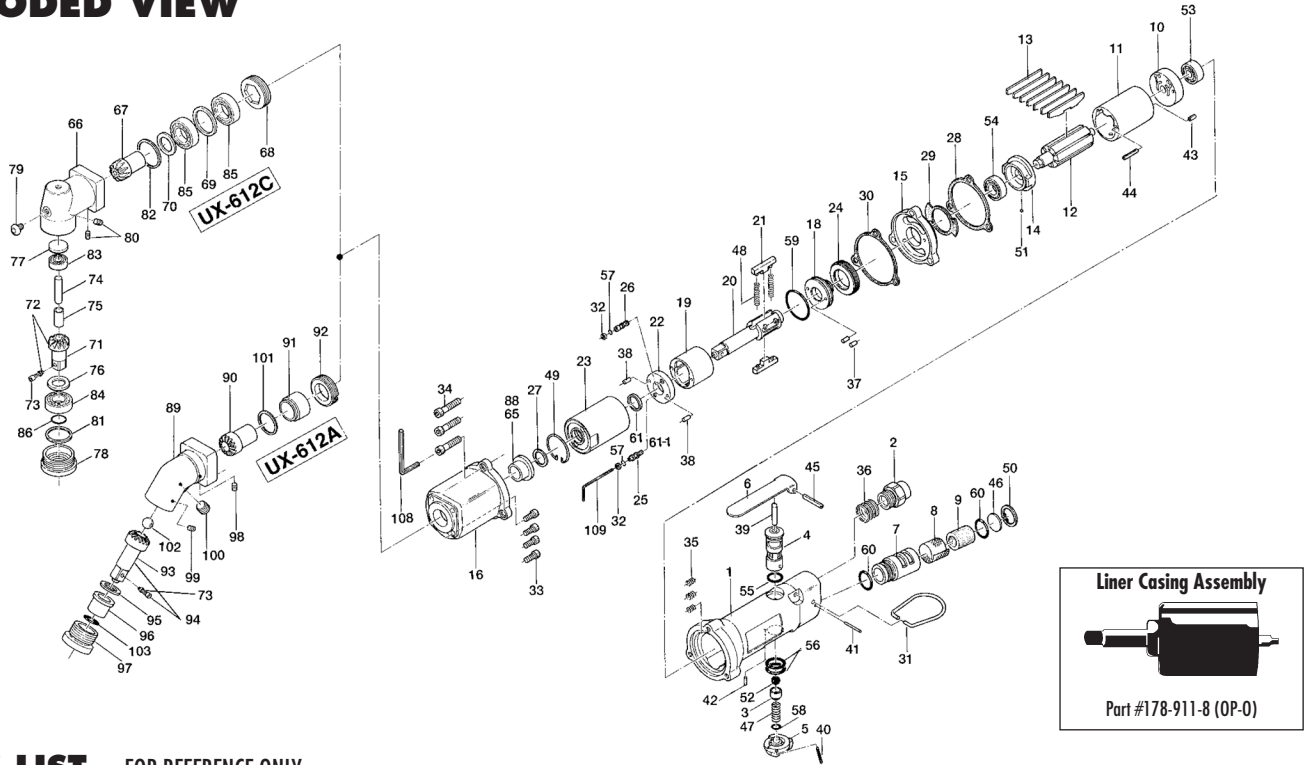


UX-612C & UX-612A OIL-PULSE WRENCHES

EXPLODED VIEW



PARTS LIST — FOR REFERENCE ONLY

Index Number	Part Number	Description	Qty.	Index Number	Part Number	Description	Qty.	Index Number	Part Number	Description	Qty.
1	179-025-3	Handle	1	39	970-326-0	Pin (H) (4 x 25)	1	76	008-433-1	Driven Gear Spindle	1
2	180-091-6	Air Inlet Bushing	1	40	973-022-0	Roll Pin (2 x 22)	1	77	179-391-5	Spindle Upper Plate	1
3	180-100-2	Valve	1	41	971-163-0	Roll Pin (2.5 x 23)	1	78	179-488-3	Angle Casing Cover	1
4	180-210-2	Reverse Valve	1	42	973-005-0	Roll Pin (2 x 5)	1	79	945-949-0	Allen Head Round Bolt (M5 x 6)	1
5	180-212-2	Reverse Lever	1	43	973-008-0	Roll Pin (2 x 8)	1	80	954-105-0	Allen Head Cone Point Screw (M4 x 5)	2
6	500-107-1	Valve Lever	1	44	973-018-0	Roll Pin (2 x 18)	1	81	975-806-0	Adjusting Spacer (24 x 20 x 1)	1
7	194-780-4	Exhaust Stack	1	45	973-124-0	Roll Pin (3 x 24)	1	82	975-807-0	Adjusting Spacer (28 x 25 x 1)	1
8	194-042-4	Silencer	1	46	975-598-0	Round Plate	1	83	982-013-0	Ball Bearing (606)	1
9	499-780-7	Filter	1	47	976-147-0	Spring (7 x 12 x 0.6)	1	84	982-902-0	Ball Bearing (6901)	1
10	180-285-2	Rear Plate	1	48	976-792-0	Spring (3.5 x 21 x 0.45) WPC	2 ●	85	982-903-0	Ball Bearing (6902)	2
11	180-286-2	Cylinder	1	49	978-282-0	Snap Ring (28 x 1)	1	86	990-910-0	O-Ring (SNS12.5)	1
12	196-287-4	Rotor	1	50	979-318-0	Inner Snap Ring (IRTW-18)	1	PARTS FOR UX-612A			
13	150-288-9	Blade (PC)	7	51	981-045-0	Ball (1.5 mm)	1	88	178-328-0	Anvil Bushing	1
14	177-289-9	Front Plate	1	52	981-208-0	Ball (5/16-Black)	1	89	178-441-0	Angle Casing	1
15	179-027-3	Separator	1	53	982-401-0	Ball Bearing (EE2)	1	90	009-420-1	Driving Gear	1
16	179-439-3	Front Casing	1	54	982-402-0	Ball Bearing (EE3)	1	91	192-421-2	Driving Gear Bushing	1
18	196-901-4	Rear Liner Plate	1	55	990-008-0	O-Ring (P10)	1	92	192-422-1	Driving Gear Bushing Setter	1
19	190-902-6	Liner	1	56	990-014-0	O-Ring (P14)	2	93	009-430-1	Driven Gear (O)	1
20	178-319-8	Anvil	1	57	990-320-0	O-Ring (ARP568-003)	2 ●	94	891-349-1	Driven Gear Assembly (P)	1
21	190-440-6	Driving Blade	2	58	990-322-0	O-Ring (ARP568-107)	1	95	008-433-1	Driven Gear Spacer	1
22	178-904-8	Front Liner Plate	1	59	990-329-0	O-Ring (JW1530-19)	1 ●	96	009-434-1	Driven Gear Bushing	1
23	178-905-9	Liner Casing	1	60	990-914-0	O-Ring (SNS16)	2	97	195-488-1	Angle Casing Cover	1
24	190-906-6	Liner Casing Setter	1	61	992-020-0	SU-Ring	1 ●	98	954-105-0	Allen Head Cone Point Screw (M4 x 5)	1
25	174-907-8	Relief Valve Spindle	1	61-1	944-213-0	Supporter Ring (12 x 16 x 1)	1	99	954-206-0	Allen Head Cone Point Screw (M4 x 5)	1
26	178-742-0	Oil Plug	1	PARTS FOR UX-612C				100	966-098-0	Allen Head Plug (1/8)	1
27	178-327-0	Anvil Front Spacer	1	65	185-328-2	Anvil Bushing	1	101	975-806-0	Adjusting Spacer (24 x 20 x 1)	1
28	179-854-3	Handle Packing	1	66	179-441-3	Angle Casing	1	102	981-010-0	Ball (3/8)	1
29	179-856-3	Separator Packing	1	67	179-420-3	Driving Gear	1	103	990-910-0	O-Ring (SNS-12.5)	1
30	196-867-1	Front Casing Packing	1	68	179-422-3	Driving Gear Bushing Screw	1	ACCESSORIES			
31	010-790-1	Suspension Ring	1	69	179-423-3	Driving Gear Bushing Spacer	1	108	939-010-0	Allen Wrench (3 mm)	1
32	944-002-0	Supporting Ring (2.6 x 4.5 x 1)	2 ●	70	179-425-3	Driving Gear Spacer	1	109	939-091-0	Allen Wrench (1.5 mm)	1
33	945-010-0	Allen Head Bolt (M4 x 10)	4	71	008-430-1	Driven Gear (O)	1				
34	945-020-0	Allen Head Bolt (M4 x 20)	3	72	891-345-1	Driven Gear (P) Assembly	1				
35	965-006-0	Heli-Sert (M4 x 1.5D)	3	73	891-300-1	Socket Retainer Pin Assembly	1				
36	965-073-0	Heli-Sert (UNF5/8N6)	1	74	008-431-1	Driven Gear Spindle	1				
37	970-130-0	Pin (H) (2.45 x 4.5)	2	75	008-432-1	Driven Gear Collar	1				
38	970-135-0	Pin (H) (2.45 x 11)	2								



10000 SE PINE
PORTLAND, OR 97216
503-254-6600
FAX 503-255-2615

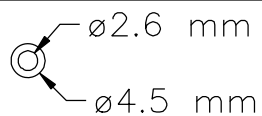
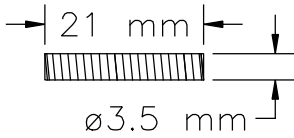
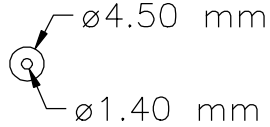
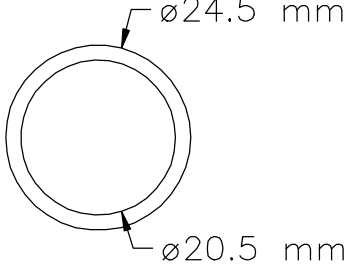
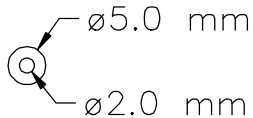
When ordering spare parts, please specify
tool type, part number, and description.

FOOTNOTES

● = Items in Pulse Repair Kit UX-612C-PRK

UX-612C-PRK

(Kit contains following parts)

#/#	Bin Location	Part Number	QTY	Description	Material	Drawing / Scketch
1	PA10	944-002-0	2	Support Ring 2.6x4.5x1	Teflon-White	
2	PA1J	976-792-0	2	Spring 3.5x21 (0.45)WPC	Spring wire ø.45 mm	
3	PA1A	990-320-0	2	O-Ring 4.5X1.4X1.6	Buna-Black	
4	PA1A	990-329-0	1	O-Ring 24.5X20.5X1.8	Buna-Black	
5	PA1B	990-900-0	1	O-Ring 5x2x1.5	Buna-Black	
6	PA10	992-020-0	1	SU-Ring (Q-12) (NTN)	Buna-Black	