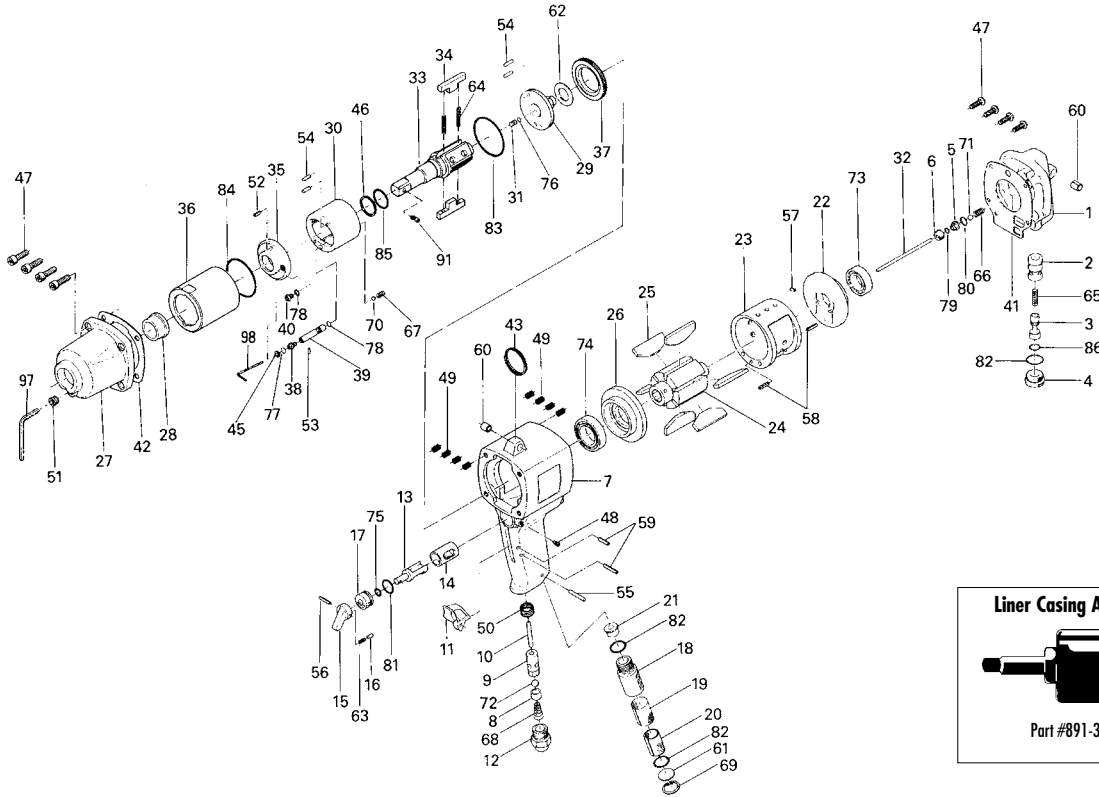


UX-T700, T700L OIL-PULSE TOOLS

EXPLODED VIEW



PARTS LIST — FOR REFERENCE ONLY

Index Number	Part Number	Description	Qty.	Index Number	Part Number	Description	Qty.	Index Number	Part Number	Description	Qty.
1	151-012-4	Head Cover	1	33	891-309-1	Anvil (OP-P)	1	65	976-072-0	Spring (4.5 x 10.5) (0.5)	1
2	174-253-2	Shut-Off Valve Bushing	1	34	194-440-0	Driving Blade	2	66	976-275-0	Spring (6.7 x 12) (0.7)	1
3	174-254-2	Shut-Off Valve	1	35	174-904-2	Front Liner Plate	1	67	976-278-0	Spring (2.6 x 8) (0.4)	1 ◆
4	174-927-2	Shut-Off Valve Cover	1	36	194-905-0	Liner Casing	1	68	977-175-0	Cone Spring (7.5 x 10.3 x 22)	1 ●
5	175-968-9	Pilot Valve Retainer	1	37	194-906-0	Liner Casing Setter	1	69	979-318-0	Inner Snap Ring (IRTW-18)	1
6	175-019-9	Valve Cover	1	38	174-907-2	Relief Valve Spindle	1	70	981-001-0	Ball (3/32)	1
7	174-025-2	Handle	1 ●	39	174-970-2	Relief Valve	1	71	981-006-0	Ball (1/4)	1
8	185-100-1	Valve	1 ●	40	194-742-0	Oil Plug	1	72	981-208-0	Ball (5/16)	1 ●
9	063-102-3	Valve Bushing	1 ●	41	151-853-4	Head Cover Packing	1	73	982-402-0	Ball Bearing (EE-3)	1
10	193-104-6	Valve Rod	1 ●	42	194-867-0	Front Packing	1	74	982-950-0	Ball Bearing (16002)	1
11	187-107-1	Throttle Trigger	1 ●	43	004-790-2	Suspension Ring	1	75	990-203-0	O-Ring (JW1516-3)	1
12	185-091-7	Air Inlet Bushing	1 ●	45	944-203-0	Back-up Ring (3.1 x 5 x 1)	1 ◆ ■	76	990-320-0	O-Ring (APR-568-003)	1 ◆ ■
13	194-210-0	Reverse Valve	1	46	944-214-0	Back-up Ring (12 x 15.9 x 1.5)	1 ◆ ■	77	990-621-0	O-Ring (3.8 x 1.8 x 1.0)	1 ◆ ■
14	194-211-0	Reverse Valve Bushing	1	47	945-117-0	Allen Head Bolt (M5 x 16)	8	78	990-900-0	O-Ring (SNS-2)	2 ◆ ■
15	194-212-0	Reverse Lever	1	48	952-108-0	Allen Head Dog Point Screw (M4 x 8)	1	79	990-901-0	O-Ring (SNS-3)	1
16	054-220-1	Reverse Lever Notch	1	49	965-011-0	Heli-Sert (M5 x 1.5D)	8 ●	80	990-907-0	O-Ring (SNS-9)	1
17	194-222-0	Reverse Valve Setter	1	50	965-073-0	Heli-Sert (UNF5/8) (N6)	1 ●	81	990-910-0	O-Ring (SNS-12.5)	1
18	194-780-4	Exhaust Stack	1	51	966-100-0	Allen Head Plug (1/8)	1	82	990-914-0	O-Ring (SNS-16)	3
19	194-042-4	Silencer	1	52	969-449-0	Pin (G) (3 x 6)	1	83	990-923-0	O-Ring (SNS-26)	1 ◆ ■
20	174-780-3	Filter	1	53	970-013-0	Pin (H) (1.5 x 4)	1	84	990-334-0	O-Ring (JW1530-24)	1 ◆ ■
21	174-781-2	Exhaust Stack Bushing	1	54	970-204-0	Pin (H) (3 x 6)	4	85	992-020-0	SU-Ring	1 ◆ ■
22	194-285-0	Rear Plate	1	55	971-163-0	Pin (2.5 x 23)	1	86	996-418-0	Packing (15 x 9 x 1)	1
23	194-286-0	Cylinder	1	56	973-047-0	Roll Pin (1.5 x 14)	1	91	891-300-1	Socket Pin Assembly (3/8)	1
24	174-287-2	Rotor	1	57	973-066-0	Roll Pin (2.5 x 6)	1				
25	174-288-4	Rotor Blade (PC)	6	58	973-110-0	Roll Pin (3 x 10)	2				
26	194-289-0	Front Plate	1	59	973-114-0	Roll Pin (3 x 14)	2 ●				
27	194-439-0	Front Casing	1	60	973-340-0	Roll Pin (6 x 10)	2				
28	190-328-6	Anvil Bushing	1	61	975-598-0	Round Plate (18 x 1)	1				
29	174-901-2	Rear Liner Plate	1	62	975-780-0	Adjusting Spacer (21 x 13 x T)	1				
30	174-902-2	Liner	1	63	976-025-0	Spring (3 x 8.5) (0.5)	1				
31	175-546-9	Piston	1	64	976-793-0	Spring (3.7 x 29) (0.5) WPC	2 ◆ ■				
32	174-130-2	Piston Rod (3 x 67.5)	1								



PART FOR UX-T700L

67	976-279-0	Spring (2.5 x 8) (0.35)	1 ■
----	-----------	-------------------------	-----

ACCESSORIES

97	939-104-0	Allen Wrench (5 mm)	1
98	939-091-0	Allen Wrench (1.5 mm)	1

FOOTNOTES

- = 174-984-2 Handle Assembly Components
- ◆ = Items in Pulse Repair Kit UX-T700-PRK
- = Items in Pulse Repair Kit UX-T700L-PRK

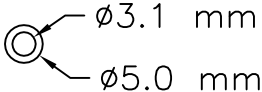
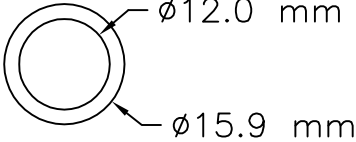
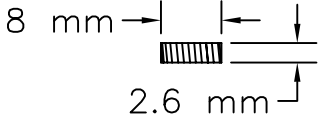
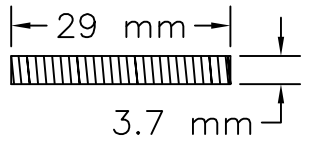
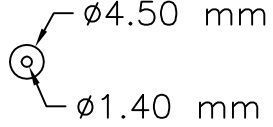
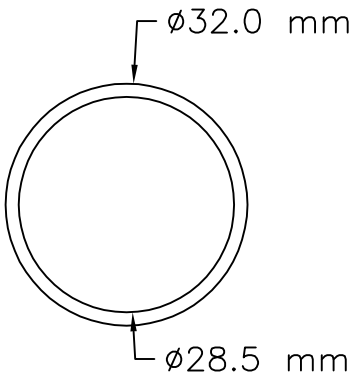
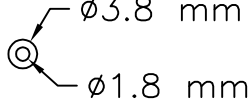
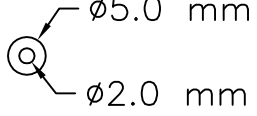


10000 SE PINE
PORTLAND, OR 97216
503-254-6600
FAX 503-255-2615

When ordering spare parts, please specify tool type, part number, and description.

UX-T700-PRK

(Kit contains following parts)

#/#	Bin Location	Part Number	QTY	Description	Material	Drawing / Scketch
1	PA10	944-203-0	1	Back Up Ring 3.1x5x1	Teflon-White	
2	PA10	944-214-0	1	Supporting Ring 12x15.9x1.5	Teflon-White	
3	PA1I	976-278-0	1	Spring 2.6x8 (.4) WPC	Spring wire ø.40 mm	
4	PA1J	976-793-0	2	Spring 3.7x29	Spring wire ø.50 mm	
5	PA1A	990-320-0	1	O-Ring 4.5X1.4X1.6	Buna-Black	
6	PA1A	990-334-0	1	O-Ring (JW1530-24) 28.5x32x1.75	Buna-Black	
7	PA1A	990-621-0	1	O-Ring 3.8x1.8x1	Buna-Black	
8	PA1B	990-900-0	2	O-Ring 5x2x1.5	Buna-Black	

UX-T700-PRK

(Kit contains following parts)

#/#	Bin Location	Part Number	QTY	Description	Material	Drawing / Scketch
9	PA1B	990-923-0	1	O-Ring (SNS-26) 26x30x2	Buna-Black	 <p>Technical drawing of an O-ring. The outer diameter is labeled as $\phi 30.0$ mm and the inner diameter is labeled as $\phi 26.0$ mm.</p>
10	PA10	992-020-0	1	SU-Ring (Q-12) (NTN)	Buna-Black	 <p>Technical drawing of an SU-Ring. The outer diameter is labeled as $\phi 17.0$ mm and the inner diameter is labeled as $\phi 12.0$ mm.</p>

UX-T700L-PRK

(Kit contains following parts)

#/#	Bin Location	Part Number	QTY	Description	Material	Drawing / Scketch
1	PA10	944-203-0	1	Back Up Ring 3.1x5x1	Teflon-White	
2	PA10	944-214-0	1	Supporting Ring 12x15.9x1.5	Teflon-White	
3	PA1I	976-279-0	1	Spring 2.5x8 (.35) WPC	Spring wire ø.35 mm	
4	PA1J	976-793-0	2	Spring 3.7x29	Spring wire ø.50 mm	
5	PA1A	990-320-0	1	O-Ring 4.5X1.4X1.6	Buna-Black	
6	PA1A	990-334-0	1	O-Ring (JW1530-24) 28.5x32x1.75	Buna-Black	
7	PA1A	990-621-0	1	O-Ring 3.8x1.8x1	Buna-Black	
8	PA1B	990-900-0	2	O-Ring 5x2x1.5	Buna-Black	

UX-T700L-PRK

(Kit contains following parts)

#/#	Bin Location	Part Number	QTY	Description	Material	Drawing / Scketch
9	PA1B	990-923-0	1	O-Ring (SNS-26) 26x30x2	Buna-Black	 <p style="text-align: right;"> $\phi 30.0$ mm $\phi 26.0$ mm </p>
10	PA10	992-020-0	1	SU-Ring (Q-12) (NTN)	Buna-Black	 <p style="text-align: right;"> $\phi 17.0$ mm $\phi 12.0$ mm </p>