

FOR THE WIND INDUSTRY





Since 1970, **AIMCO** has been providing Global Assembly and Critical Bolting Tooling solutions for the Automotive, Electronics, Aerospace, Energy Services, and General Assembly Industries.

Headquartered in Portland, Oregon, **AIMCO** has become a leading importer and exporter of industrial power tools. **AIMCO** currently exports to over 33 countries.

In 1999, AIMCO began manufacturing its **AcraDyne®** line, which produces a complete line of DC Controlled Tools and custom built multiple spindle systems. Our service, repair, and calibration labs provide fast turnaround on repairs; additionally, all electronic torque equipment meets NIST standards.

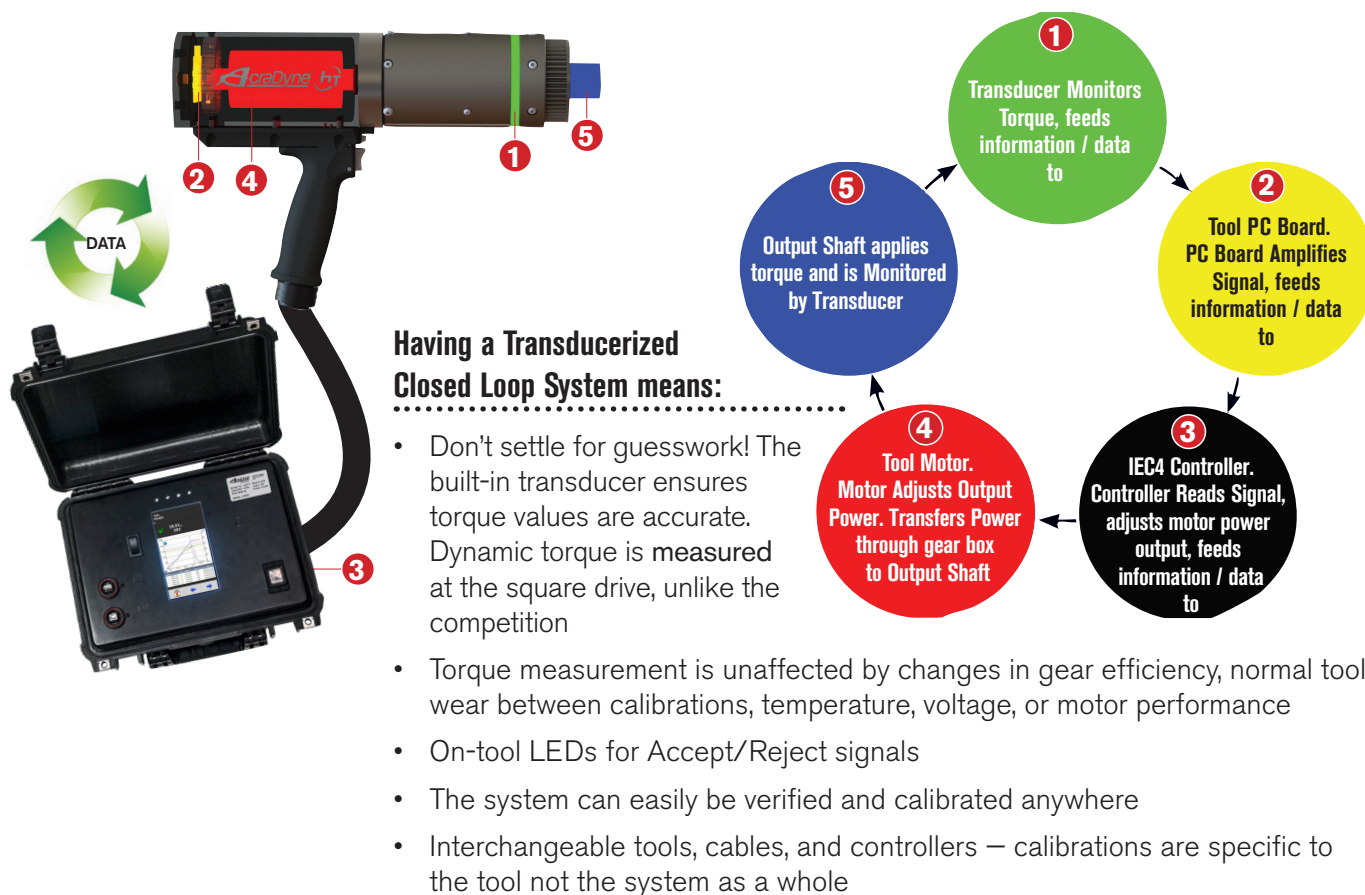
If **Productivity, Ergonomics, Reliability, and Quality** are driving forces in your business, then let **AcraDyne®** be your value-added partner. **AcraDyne®** provides cost effective solutions for our customers by resolving challenges related to tightening and critical bolting strategies, tool selection and installation, joint failure analysis, audit trails, and methods. This, combined with operator training, maximizes the production efficiencies our tools provide.

AcraDyne® produces a complete line of DC Controlled Tools as well as custom built multiple spindle systems ranging from approximately 1 to 12,000 Nm. ***All Made in the USA.***

Our strategically located sales force, coupled with our worldwide distributor network, make **AcraDyne®** the right choice for you.

HIGH TORQUE DC BOLTING TOOLS

The Driving Force in Critical Bolting



CHOOSE YOUR HANDLE



PERQ Advantages

- PRODUCTIVITY**
- High tool speeds
 - Able to work with a single operator
 - Automatic evaluation and data collection
- ERGONOMICS**
- Multiple handle configuration options for optimal tool handling
 - Programmable acceleration to manage reaction bar behavior against reactive surface
- RELIABILITY**
- Production duty cycle durability — gearing tested to 100,000 cycles before maintenance
- QUALITY**
- Torque measurement at the output — torque delivered is the torque reported
 - Broad range of programmable tightening strategies to handle joint characteristics
 - On-board torque calibration against known standards to ensure accurate results

360° SWIVEL GEARCASE NUTRUNNERS

Designed for Extreme Duty / Low Power Environments

FEATURES AND BENEFITS

- Built-in integral transducer for optimal monitoring and control
- One of the **most accurate** high-torque tools in the world
- 250 Nm – 12,000 Nm torque range
- Ergonomic, robust design with two handle configurations that are also available in dual-lever models
- The world's most advanced traceable system at the output
- Three tightening strategies:
 - *Torque Control*: Drive the tool to a pre-set Target Torque
 - *Angle Control*: Drive the tool to or measure a pre-set Degree of Angle
 - *Yield Control*: Drive the tool to the Fastener Yield Point to achieve maximum clamp load
- Data retrieval
- Optional rugged carrying/storage case available
- Two-year anvil-to-handle warranty*
- Designed and **MADE IN THE USA**



2,800 Nm Torque
AEP4W872800B



12,000 Nm Torque
AEJ4B8X12000B

BOLTING TOOLS FOR EXTREME DUTY / LOW-POWER ENVIRONMENTS

360° SWIVEL GEARCASE MODEL	SERIES	APPROX. TORQUE NM	APPROX. TORQUE FT-LB	APPROX. SPEED RPM	WEIGHT KG	WEIGHT LB	LENGTH MM	LENGTH IN	DIA. MM	DIA. IN	DRIVE IN	SOUND LEVEL dB(A)
(AEP) (AEJ)4W872800B	8000/7000	2,800	2,065	9	10.0	22	328	12.9	76	3.0	1	66
(AEP) (AEJ)4W884650B1	8000	4,650	3,430	9	11.8	26	391	15.4	86	3.6	1	66
(AEP) (AEJ)4W884650B	8000	4,650	3,430	9	11.8	26	391	15.4	86	3.6	1.5	66
(AEP) (AEJ)4W896500B	8000/9000	6,500	4,800	5	15.7	34.5	378	14.9	101	4.0	1.5	66
(AEP) (AEJ)4B8898100B*	8000/9000	8,100	6,000	5	16.4	36	429	16.9	101	4.0	1.5	66
(AEP) (AEJ)4B8X12000B*	8000/9000	12,000	8,850	3.5	24.0	52.5	564	22	131	5.2	1.5	66

* 8,100 Nm and 12,000 Nm tools are not supported by the Gen III controller platform. The Gen IV controller platform is required.

* or 100,000 cycles, whichever comes first. See additional details.

HIGH-TORQUE ANGLE TOOLS

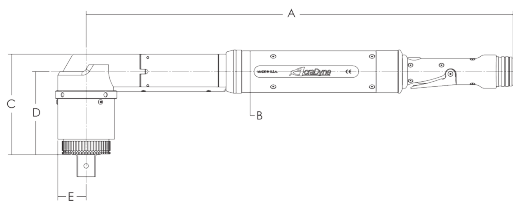
FEATURES AND BENEFITS

- Transducerized closed loop control at the output like all AcraDyne HT-Series tools
- These low-profile head, small-diameter, lever-operated tools, with the torque measured at the output, offer a unique solution
- The torque reported is the torque delivered
- Smallest tools of their kind on the market
- Same durable, high-cycle gearing as our other HT-series tools
- Models up to 12,000 Nm available upon request



SPECIFICATIONS

MODEL	MAX. TORQUE*		TORQUE RANGE		FREE SPEED RPM	WEIGHT		OUTPUT DRIVE
	NM	FT-LB	NM	FT-LB		LB	KG	
AEN356540A	540	398	135 - 540	100 - 398	109	13.1	5.95	3/4" Square Drive
AEN3571000A	1,000	737	250 - 1,000	184 - 737	61	16.3	7.39	1" Square Drive
AEN3571600A	1,600	1,180	400 - 1,600	295 - 1,180	33	16.7	7.57	1" Square Drive
AEN3572600A	2,600	1,917	650 - 2,600	479 - 1,917	21	18.5	8.40	1" Square Drive



DIMENSIONS	A		B		C		D		E	
	IN	MM	IN	MM	IN	MM	IN	MM	IN	MM
AEN356540A	22.58	573.6	2.31	58.7	4.75	120.6	4.05	102.8	1.33	33.7
AEN3571000A	22.92	582.2	2.31	58.7	5.36	136.1	4.44	112.7	1.53	38.7
AEN3571600A	22.92	582.2	2.31	58.7	5.36	136.1	4.44	112.7	1.53	38.7
AEN3572600A	22.92	582.2	2.31	58.7	6.77	171.9	5.86	148.8	1.53	38.7

HIGH-TORQUE DUAL-LEVER NUTRUNNERS

Provides Additional Safety by Avoiding Accidental Tool Start

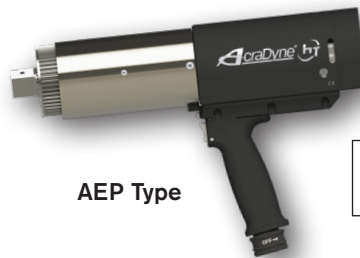


FEATURES AND BENEFITS

- Additional safety when using a tool with a reaction bar or nose extension
- Requires both hands to start the tool, keeping hands clear of application
- Helps avoid accidental starting of the tool
- Available in Pistol (P) style, J-Handle (J), and dual-handle configurations.



AEJ Type



AEP Type

Secondary throttle button



Dual-Handle Configuration

DUAL-LEVER BOLTING TOOLS FOR EXTREME DUTY / LOW-POWER ENVIRONMENTS

360° SWIVEL GEARCASE MODEL	SERIES	APPROX. TORQUE NM	APPROX. TORQUE FT-LB	APPROX. SPEED RPM	WEIGHT KG	WEIGHT LB	LENGTH MM	LENGTH IN	DIA. MM	DIA. IN	DRIVE IN	SOUND LEVEL dB(A)
(AEP) (AEJ)4W872800BDL	8000/7000	2,800	2,065	9	10.0	22	334	13.1	76	3.0	1	66
(AEP) (AEJ)4W884650B1DL	8000	4,650	3,430	9	11.8	26	397	15.6	86	3.6	1	66
(AEP) (AEJ)4W884650BDL	8000	4,650	3,430	9	11.8	26	397	15.6	86	3.6	1.5	66
(AEP) (AEJ)4W896500BDL	8000/9000	6,500	4,800	5	15.7	34.5	384	15.1	101	4.0	1.5	66
(AEP) (AEJ)4B898100BDL*	8000/9000	8,100	6,000	5	16.4	36	435	17.1	101	4.0	1.5	66
(AEP) (AEJ)4B8X12000BDL*	8000/9000	12,000	8,850	3.5	24.0	52.5	570	22.4	131	5.2	1.5	66

* 8,100 Nm and 12,000 Nm tools are not supported by the Gen III controller platform. The Gen IV controller platform is required.

HT Dual-Lever Nutrunners: **SAFETY** is **VITAL** in Critical Bolting

AcraDyne's Nutrunners are designed with ultimate operator safety in mind. The optional dual-lever design helps prevent:



Injuries from Accidental Tool Start

Two-hand operation with no tie-down feature requires the operator to use both hands on the trigger simultaneously. This eliminates the possibility of accidental tool start and keeps both of the operator's hands out of harm's way.



Strain Caused by Awkward Tool Operation

Multiple handle styles ensure the safest, most ergonomic tool for your specific application.



Hand and Finger Trauma

No more crushed or mutilated fingers or hands.

Protect your most valuable asset – your tool operator.

GEN IV FIELD CONTROLLER

The Gen IV Field Controller is the core of the modular AcraDyne DC system. One controller will command any tool in the AcraDyne line from 1 Nm to 12,000 Nm, all with one cable.

FEATURES AND BENEFITS

- Multiple fastening strategies – Program up to 256 parameters with as many as 20 steps
- Jobs capability – 99
- Event log – 5,000
- Backup & restore through USB
- Rundown storage – 1,000,000
- Real-time curve viewing. Curve storage – 20,000
- Self-contained in its own weatherproof, rugged case to protect it from the toughest environments



TIGHTENING STRATEGIES

The Gen IV Controller utilizes three tightening strategies:

- Torque Control: Drive the tool to a pre-set Target Torque
- Angle Control: Drive the tool to or measure a pre-set Degree of Angle
- Yield Control: Drive the tool to the Fastener Yield Point to achieve maximum clamp load



MODEL	DESCRIPTION
IEC4W	Field use controller
iEC4W-110	Field use controller with isolation transformer for use with 110V service
iEC4W-220	Field use controller with isolation transformer for use with 220 V service

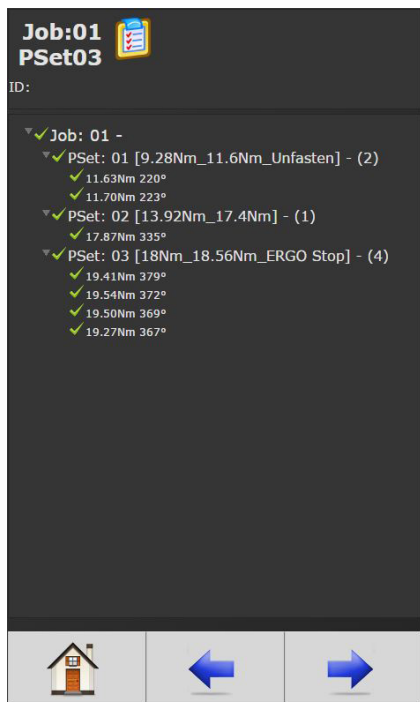
AcraDyne®
A Division of AIMCO

PERQ Advantages

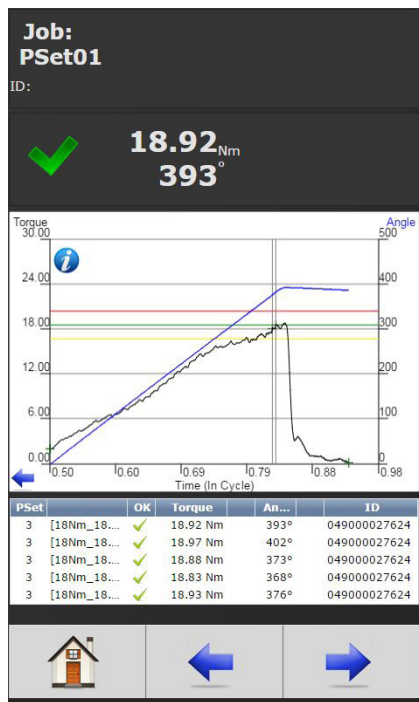
- PRODUCTIVITY**
- Increased productivity means increased profits
 - Replace multiple conventional tools with one flexible controlled system
- ERGONOMICS**
- Compact, rugged case with easy carry handle makes field use easy and convenient
- RELIABILITY**
- No guessing, just reliable and accurate bolting
 - Automatically set torque and reduce operator error
 - Collect and analyze production data
- QUALITY**
- Controlled tightening and consistent torque control improves quality
 - Process controls reduce human error, and ensure no missed fasteners, stripped threads, rehits, or damaged threads
 - No premature shut-off

GEN IV FIELD CONTROLLER SOFTWARE

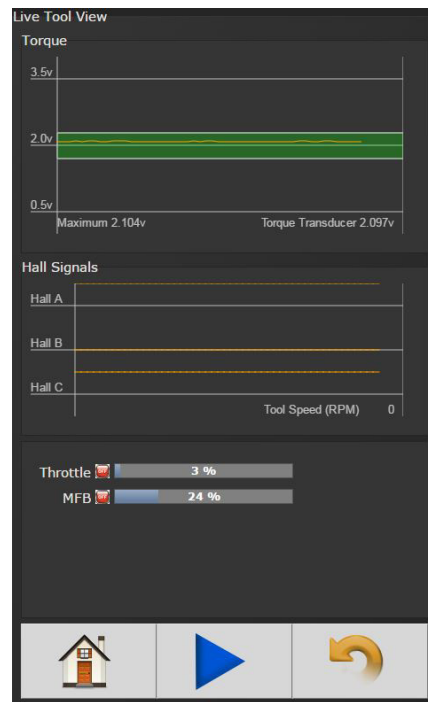
AcraDyne's software package is on-board every AcraDyne controller and is provided FREE of charge. This comprehensive, user-friendly program allows programming, analysis, and diagnostics. Software is available in multiple languages.



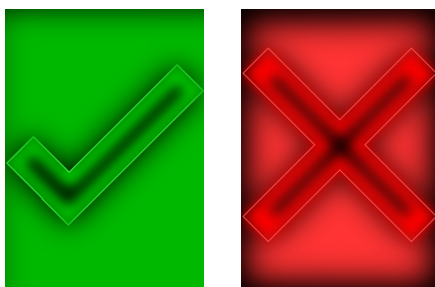
Adding and editing Parameter Sets (256) and Jobs (99) is easy and intuitive in the parameter set up function.



View curve results in real time or view stored results. As many as 20,000 curve results can be stored in memory.



Tool programming and diagnostics for repair, calibration and advanced troubleshooting.



Choose from several run screens that display easy to view, large screen indicators.



NOSE EXTENSIONS AND GEARHEAD TOOLS



NOSE EXTENSIONS

FEATURES AND BENEFITS

- Ideal for hard-to-reach applications when a torque tube, or arm, is not desirable
- A cost-effective, more flexible option compared to a multiple spindle system
- Common applications:
 - Wheel install and repair stations
 - Large flange assembly
 - Mining vehicle shovel bolts
 - Railway equipment maintenance
 - Oil and gas industry well fixtures



28050

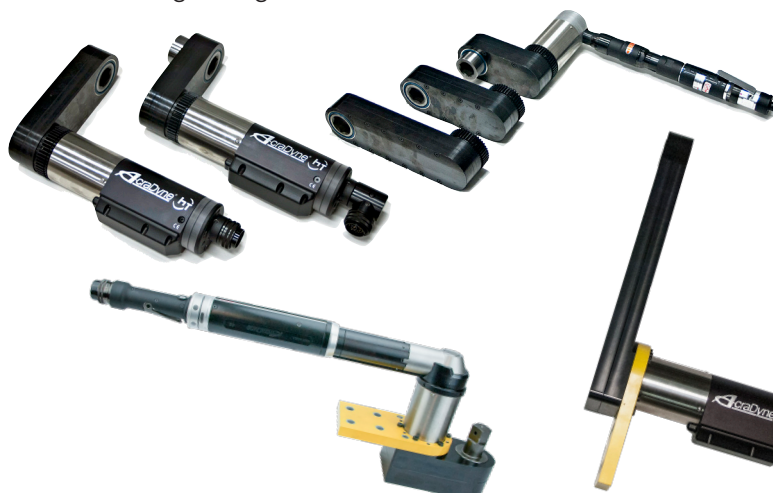


28480

HT GEARHEAD TOOLS

FEATURES AND BENEFITS

- Custom made to fit virtually any application
- Same durable gearing as found on AcraDyne's standard HT series tools
- Model types available:
 - HT Offset Gearhead tools
 - HT Right Angle with Offset Gearhead tools
 - HT Right Angle Air tools with Offset Gearhead



HIGH TORQUE BATTERY TOOLS

AcraDyne's High Torque Battery Tools provide plenty of power in a compact package. The tool's low weight and ergonomic design ensure excellent mobility, flexibility, and efficiency, even when working in limited spaces. The low-wear brushless synchronous motor is maintenance free, reducing running costs.

FEATURES AND BENEFITS

- Battery driven two-speed torque multiplier for torques from 90 Nm to 4,000 Nm (65 to 2,950 ft-lb)
- Short fastening cycles: Fast gear for run down and power gear for highest torques and precision
- Mobile and always ready for use: Compact design for convenient use in limited spaces
- Efficient operation: Fast and easy gear-changing, great torque range – choose from 22 torque values
- Very low susceptibility to damage and failure: Motor housing made of special polymer that is break-proof, impact-proof, and resistant to corrosion
- Intelligent energy management and faster workflow: Electronics protect battery cells from overcharging and depth discharge



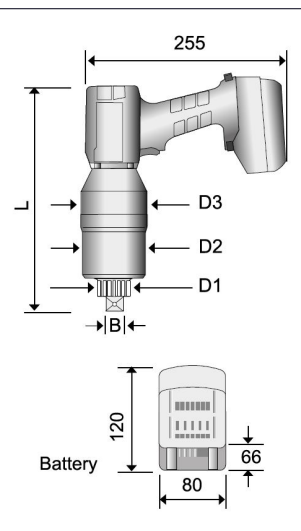
PERQ Advantages

- PRODUCTIVITY** • Two Lithium-Ion battery packs ensure up to 360 tightenings. Each battery features an LED charge level indicator
- ERGONOMICS** • Low weight relative to the torque delivered
• Ergonomically designed
• Low noise emissions
- RELIABILITY** • Low-wear brushless, synchronous motor is maintenance free
- QUALITY** • Exact shut-off torque even at low battery levels



Each tool comes with two 18 V, 5.2 Ah lithium-ion batteries and a battery charger. Battery and charger are also available to purchase separately.

Battery: ABG-B1852
110V Charger: ABG-C110
220V Charger: ABG-C220

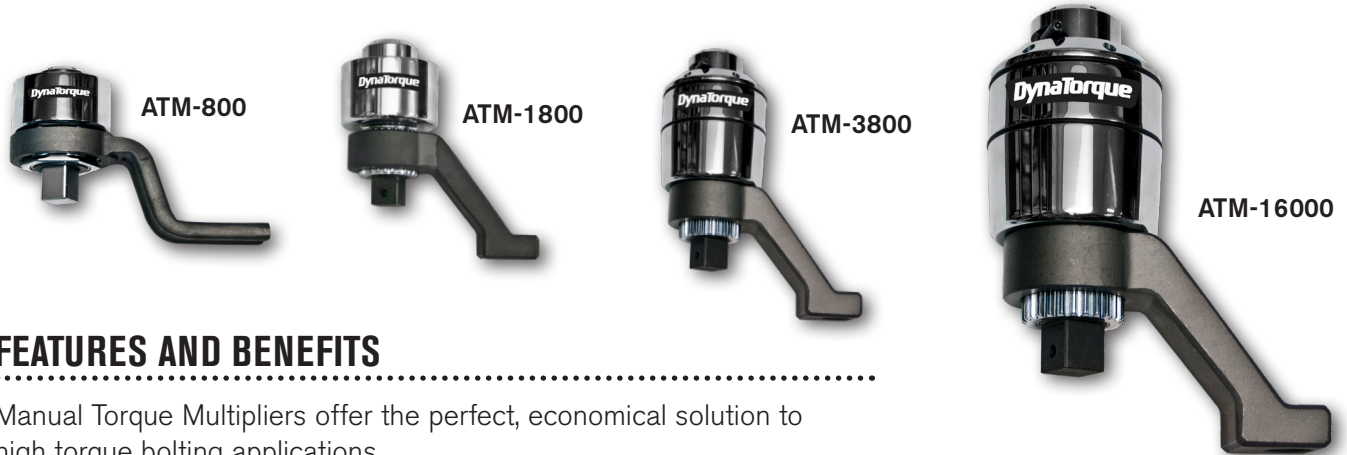


MODEL*	TORQUE RANGE**		SQ. DRIVE IN	DIAMETER			LENGTH		WEIGHT		IDLE SPEED (RPM)	
	NM	FT-LB		D ₁	D ₂	D ₃	IN	MM	LB	KG	1ST GEAR	2ND GEAR
ABG860-KIT	115 - 860	85 - 635	3/4	41 mm / 1.6 in	85 mm / 3.3 in	88 mm / 3.5 in	11.6	295	12.1	5.5	7.0	24.0
ABG1400-KIT	150 - 1,400	110 - 1,030	3/4	41 mm / 1.6 in	85 mm / 3.3 in	88 mm / 3.5 in	11.6	295	12.1	5.5	4.0	13.0
ABG2200-KIT	250 - 2,200	185 - 1,620	1	54 mm / 2.1 in	85 mm / 3.3 in	88 mm / 3.5 in	12.6	320	15.4	7.0	2.0	6.5
ABG2800-KIT	300 - 2,800	220 - 2,065	1	54 mm / 2.1 in	85 mm / 3.3 in	88 mm / 3.5 in	13.6	345	16.3	7.4	1.7	6.0
ABG3200-KIT	360 - 3,200	265 - 2,360	1	72 mm / 2.8 in	93 mm / 3.7 in	97 mm / 3.8 in	14.6	370	16.3	7.4	1.5	5.0
ABG4100-KIT	500 - 4,100	370 - 3,025	1-1/2	72 mm / 2.8 in	93 mm / 3.7 in	97 mm / 3.8 in	14.6	370	20.1	9.1	1.0	4.0

* Each tool comes in a kit, which includes the tool, two 18V / 5.2 Ah Li-ion batteries, and a battery charger.

** When loosening bolts, a higher torque (up to 20%) may be necessary (release torque).

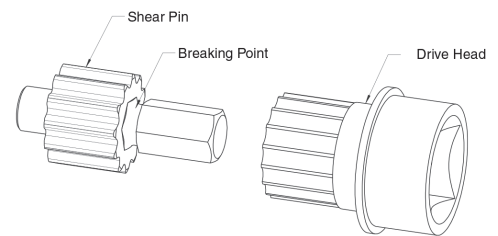
MANUAL TORQUE MULTIPLIERS



FEATURES AND BENEFITS

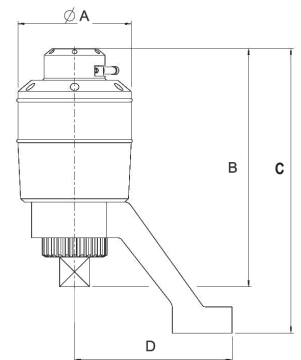
Manual Torque Multipliers offer the perfect, economical solution to high torque bolting applications.

- Superior power to weight ratio
- Delivered torque accuracy +/- 4%
- Anti-Wind Up safety feature (2,800 NM models and up) prevents input device from springing backward when released
- True torque multiplication ratios
- Standard reaction arms supplied. Custom reaction arms/nose extensions available to suit specific applications
- No preventative maintenance required
- Overload protected by shear-drive design (spare torsion shaft included). Easily replace sheared-off pins at the work site



MODEL	INPUT IN	OUTPUT IN	RATIO	MAX TORQUE OUTPUT		A (MM)	B (MM)	C (MM)	D (MM)	WEIGHT*	
				Nm	Ft-Lb					LB	KG
ATM-800	1/2	3/4	1:3.5	800	590	65	105	132	130	2.9	1.3
ATM-1800	3/4	1	1:3.6	1,800	1,238	90	150	188	132	6.6	3.0
ATM-2800	1/2	1	1:13	2,800	2,066	95	200	240	132	11.5	5.2
ATM-3800	3/4	1	1:13	3,800	2,804	95	200	240	132	11.5	5.2
ATM-5000	3/4	1.5	1:17	5,000	3,690	120	215	272	150	15.4	7.0
ATM-8000	3/4	1.5	1:49	8,000	5,904	132	268	344	200	25.4	11.5
ATM-12000	3/4	1.5	1:58	12,000	8,856	156	272	348	200	30.9	14.0
ATM-16000	3/4	2.5	1:75	16,000	11,808	215	292	370	225	57.3	26.0

* Weight shown does not include weight of reaction device.



CARRYING CASE

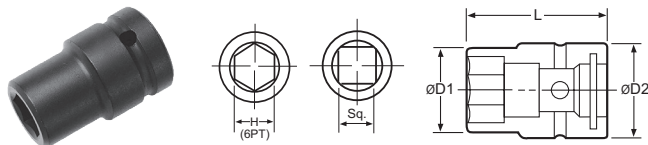
All DynaTorque Multipliers are supplied in a rugged, weather-resistant, portable carrying case.



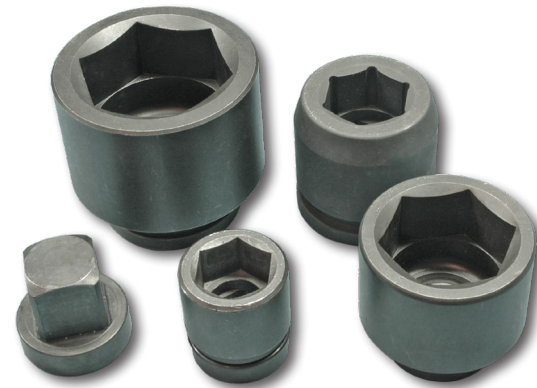
SOCKETS & ACCESSORIES

In addition to the models presented below, a wide variety of sockets and extensions are available.
Call 1-503-254-6600, or toll free 1-800-852-1368 for more information.

IMPACT SOCKETS



	PART NO	HEX	D1 MM	D1 IN	D2 MM	D2 IN	L MM	L IN
SAE	1" Square Drive							
	A87/8	7/8"	37	1.46	54	2.13	59	2.32
	A815/16	15/16"	38	1.50	54	2.13	59	2.32
	A81	1"	41	1.61	54	2.13	59	2.32
SAE	A81-3/16	1-3/16"	50	1.97	54	2.13	61	2.41
	A817	17 mm	31	1.22	50	1.97	63	2.48
	A819	19 mm	33	1.30	50	1.97	63	2.48
	A821	21 mm	37	1.46	50	1.97	63	2.48
METRIC	A836	36 mm	57	2.24	55	2.17	65	2.56
	1-1/2" Square Drive							
	A142-1/8	2-1/8"	84	3.31	84	3.31	87	3.43
	A142-1/2	2-1/2"	97	3.82	86	3.39	100	3.94
SAE	A143-1/2	3-1/2"	130	5.12	86	3.39	120	4.72
	A144-1/4	4-1/4"	155	6.10	102	4.02	140	5.51
	A1465	65 mm	99	3.90	86	3.39	100	3.94
	A1475	75 mm	112	4.41	86	3.39	110	4.33
METRIC	A1485	85 mm	125	4.92	86	3.39	120	4.72
	A14105	105 mm	151	5.95	102	4.02	130	5.12



HEAVY DUTY WATERPROOF HT TOOL CASE

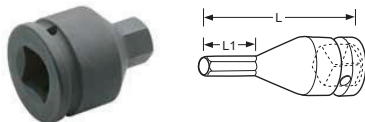
Made of ultra high-strength polypropylene copolymer resin, this waterproof utility case protects AcraDyne HT tools.

Case with
molded foam
insert



- Molded-in hinge, trigger-release latch system, and snap-down cushion grip handle
- Resistance to UV, solvents, corrosion, and impact damage

ALLEN SOCKETS



PART NO	HEX	L1 MM	L1 IN	L MM	L IN
1-1/2" Allen Socket					
A1432CZ	32 mm	20.5	1.26	120	4.72

Many other allen sockets are available, including:

1" x 19 mm	1-1/2 x 19 mm
1" x 22 mm	1-1/2 x 22 mm
1" x 24 mm	1-1/2 x 24 mm
1" x 27 mm	1-1/2 x 36 mm

Contact an AIMCO Customer Service Associate for ordering options, 1-503-254-6600, or toll free 1-800-852-1368.

MODEL	COMPATIBLE TOOLS	DESCRIPTION
CC-6000-F	6000 series	Case with molded foam insert
CC-6000-FIP	6000 series	Case with foam in place
CC-7000-F	7000 series	Case with molded foam insert
CC-7000-FIP	7000 series	Case with foam in place
CC-8000-F	8000 series	Case with molded foam insert
CC-8000-FIP	8000 series	Case with foam in place

Please contact an AIMCO Customer Service Associate for details, 1-503-254-6600, or toll free 1-800-852-1368.

ACCESSORIES

Custom accessories are available for your application; contact an AIMCO Customer Service Associate for details, 1-503-254-6600, or toll free 1-800-852-1368.

Swivel Handle



Swivel Bail



Fixed Handle

Hoist Ring



Fixed Handle with Hoist Ring








MODEL	DESCRIPTION
26477	Swivel Bail, 6000 Series
26327	Swivel Bail, 7000 Series
26630	Swivel Bail, 8000 Series
26478	Swivel D-Handle, 6000 Series
26328	Swivel D-Handle, 7000 Series
25291	Swivel D-Handle, 8000 Series
26479	Stationary Bail, 6000 series (26336 handle not included)
26332	Stationary Bail, 7000 series (26336 handle not included)
25289	Stationary Bail, 8000 series (26336 handle not included)
26336	Fixed Handle (for use with 26479, 26332, 25289)
26337	Rear Fixed Hoist Ring, 6000/7000/8000 Series Pistols
28514	Rear Folding Hoist Ring Kit for 8000 Series Pistols
28549	Sliding Spindle, 6000 Series
27045	Sliding Spindle, 7000 Series
30300	Sliding Spindle, 8000 Series

REACTION BARS



HT tool includes a standard, spline attachment reaction device. Custom reaction devices are available; contact an AIMCO Customer Service Associate for more details, 1-503-254-6600, or toll free 1-800-852-1368.

	MODEL	DESCRIPTION
 Single Ended Flat	26810	6000 Series
	26800	7000 Series
	25277	8000 Series
	27255	9000 Series
	30303	8X Series
 Single Ended Offset	26815	2.375" Offset, 6000 Series
	26885	4.00" Offset, 6000 Series
	27200	3.10" Offset, 7000 Series
	26890	4.00" Offset, 7000 Series
	25274	3.35" Offset, 8000 Series
	25275	4.00" Offset, 8000 Series
	26840	3.35" Offset, 9000 Series
 Double Ended Flat	26830	6000 Series
	26820	7000 Series
	25278	8000 Series
 Double Ended Offset	25276	3.35" Offset, 8000 Series
	27335	3.2" Offset, 8000 Series
 T-Shaped		

GEAR ROTATION FIXTURES



27413

MODEL	DESCRIPTION	TOOL COMPATIBILITY
27413	Gear rotation fixture assembly	7000 Series Tools, 1" Dr.
27630	Gear rotation fixture assembly	8000 Series Tools, 1" Dr.
27633	Gear rotation fixture assembly	8000 Series Tools, 1-1/2" Dr.

PROTECTIVE COVERS FOR DC TOOLS

Durable protective covers prevent marring and damage.



MODEL	DESCRIPTION
BJ10078	Protective Cover, 6000 Series
BJ10077	Protective Cover, 7000 Series
BJ10076	Protective Cover, 8000 Series

ACCESSORIES

CABLES, CABLE ADAPTERS, AND CONNECTORS

Cable and connectors provide excellent ergonomics, maximum-quality signal transfer, and full CE compliance.



Cable Adapters

MODEL	DESCRIPTION	LENGTH
CABLES		
24330	Cable G3 Tool Cable 3M	3 m (9.8 ft)
25350	Cable G3 Tool Cable 5M	5 m (16.4 ft)
24320	Cable G3 Tool Cable 10M	10 m (32.8 ft)

MODEL	DESCRIPTION
ADAPTERS	
25646	G1 iEC to G3 Cable Adapter
26934	G3 iEC to G1 Cable Adapter
27210	G3 Tool to G1 Cable Adapter
26364	Right Angle Cable Adapter
26594	Conversion Kit G1 iEC to G3 iEC
27370	Conversion Kit G3 iEC to G1 iEC

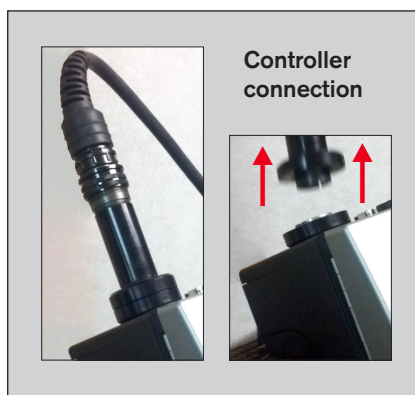
BREAKAWAY CABLE CONNECTOR

Innovative Quick Disconnect Device reduces cable damage from dropping tools or pulling cables when in use.



**25491
Breakaway Cable
Connector**

- Can be placed at the tool or at the controller
- Easily snaps into place
- Connects using magnetic force
- Adjust holding force by removing or adding magnets. Max holding force is 40 lbs / 18 kg



AHCTS TEST STAND FOR ROTATING TOOLS



AHCTS-5000

Designed for testing tools with continuous rotating output spindles. The test stand includes a rundown fixture, bushing for side load support, reaction post or reaction paddles, transducer, and torque analyzer display.

MODEL	RUNDOWN FIXTURE CAPACITY	DESCRIPTION
AHCTS-2500	250 ft-lbs – 2,500 ft-lbs 340 Nm – 3,390 Nm	1.5" Sq. Dr. w/rundown fixture*
AHCTS-5000	500 ft-lbs – 5,000 ft-lbs 678 Nm – 6,780 Nm	1.5" Sq. Dr. w/rundown fixture*
AHCTS-7500	750 ft-lbs – 7,500 ft-lbs 1,016 Nm – 10,168 Nm	1.5" Sq. Dr. w/rundown fixture

*Adapters for 3/4" drive and 1" drive are available.
Consult your AcraDyne HT representative for details, 1-503-254-6600, or toll free 1-800-852-1368.

PORTABLE RUNDOWN FIXTURE



Eliminate the need for high-cost, heavy, and cumbersome test stands. This portable, lightweight, and easy-to-use rundown fixture requires virtually no set-up and is ideal for tool-run tests up to 1,000 Nm. With a reaction bar attached, run one bolt down to torque while using the second bolt as the reaction point.

FEATURES AND BENEFITS

- Two bolts — one for rundown, one for reaction
- No clamping or securing necessary
- Can be used with medium or hard joint
- Easy to adjust reaction bolt
- Grade 5 bolts provide durability (lithium grease included)
- Rundown fixture includes:
 - A62-1/16Z Socket for 3/4" Sq. Dr. Tools
 - A82-1/16Z Socket for 1" Sq. Dr. Tools
- Recommended:
 - 30951 Grade 5 Replacement Bolt

MODEL	MAX. TORQUE CAPACITY NM	WIDTH		WEIGHT	
		IN	MM	KG	LB
30955	1,000	8.50	215.9	5.6	12.45

When used with recommended AIMCO sockets, reaction bar geometry is a standard offset (2" - 3.5")

TOOL SPECIALS



AIMCO can provide customized tooling solutions for even the most unique applications. Let us propose a solution tailored to your needs. Contact an AIMCO Customer Service Associate for more details, 1-503-254-6600, or toll free 1-800-852-1368.





CORPORATE HEADQUARTERS
10000 SE Pine St.
Portland, Oregon 97216
Phone: (503) 254-6600
Toll Free: 800-852-1368

AIMCO CORPORATION DE MEXICO SA DE CV
Ave. Cristobal Colon 14529
Chihuahua, Chihuahua. 31125
Mexico
Toll Free : (01-800) 801-1600
Direct : (01-614) 380-1010
Fax: (01-614) 380-1019