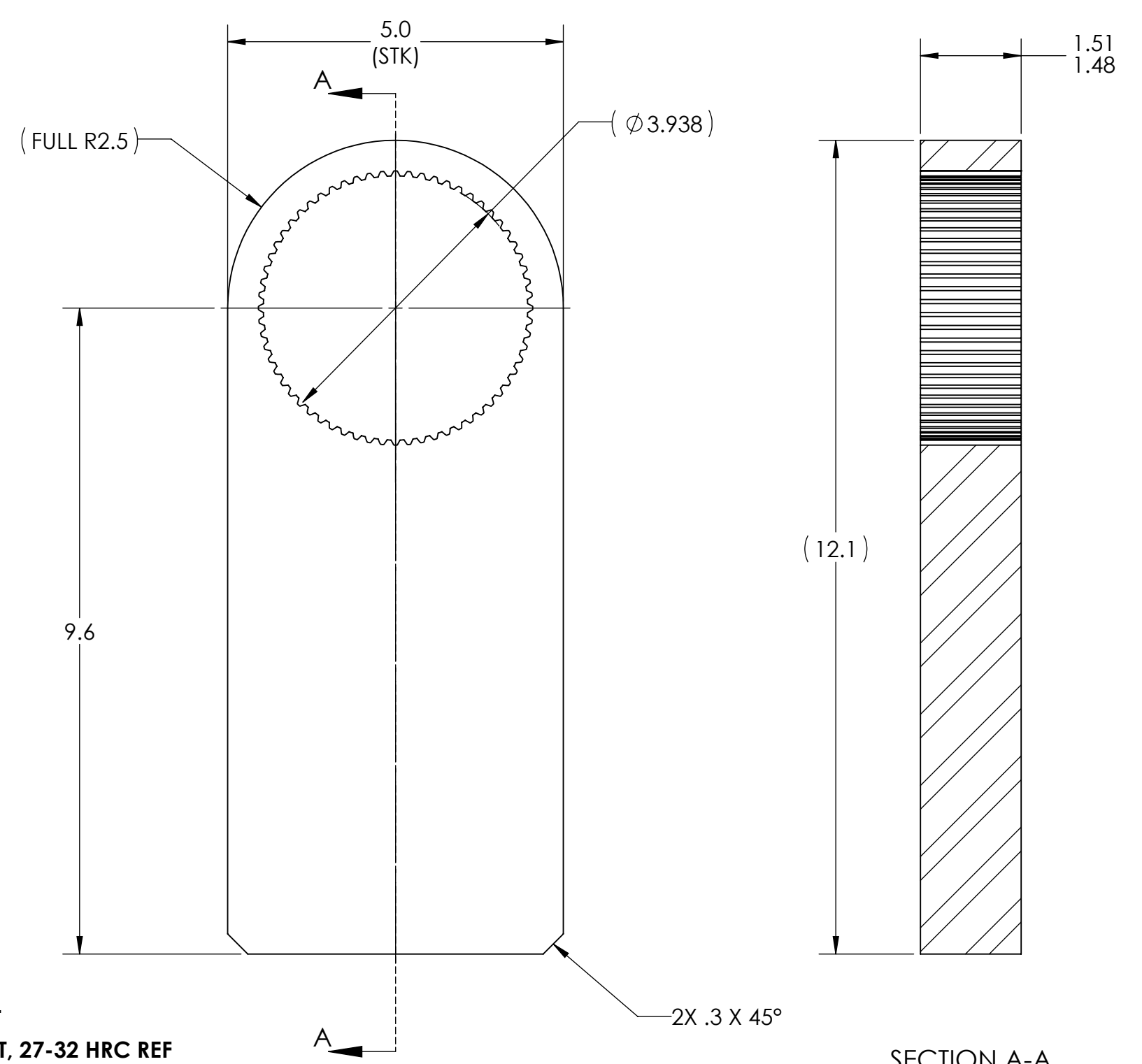


8 7 6 5 4 3 2 1

D  
C  
B

D  
C  
B



**MATERIAL: AISI 4140HT STEEL**  
**HEAT TREAT: PRE-HEAT TREAT, 27-32 HRC REF**  
**FINISH: DE-SCALE**

SECTION A-A

| FLAT ROOT SIDE FIT INTERNAL SPLINE DATA TABLE: |        |
|--|--------|
| SPLINE PITCH:                                  | 16/32  |
| PRESSURE ANGLE:                                | 30°    |
| NUMBER OF TEETH:                               | 64     |
| STANDARD PITCH Ø:                              | 4.0000 |
| MAJOR Ø:                                       | 4.084  |
| MINOR Ø:                                       | 3.9425 |
| FORM Ø:  | 3.9375 |
| MAX EFFECTIVE SPACE WIDTH:                     | 4.071  |
| MAX ACTUAL SPACE WIDTH:                        | 0.0997 |
| INSPECTION PIN Ø:                              | 0.1018 |
| DISTANCE BETWEEN PINS:                         | 0.1080 |
|  | 3.8517 |
|  | 3.8489 |
| DIMENSIONS AND TOLERANCE PER ANSI B92.1-1996   |        |

A

A



**DOCUMENT CONTROL**  
 PRINTED COPIES OF THIS DOCUMENT ARE CONSIDERED TO BE UNCONTROLLED DOCUMENTS. HOLDERS ARE RESPONSIBLE FOR VERIFYING THE CURRENT REVISION LEVEL WITH PURCHASING OR ENGINEERING PRIOR TO USE OR FABRICATION. THE CONTROLLED VERSION OF THIS DOCUMENT IS ELECTRONICALLY MAINTAINED.

**PROPRIETARY AND CONFIDENTIAL**  
 THIS DRAWING CONTAINS INFORMATION STRICTLY CONFIDENTIAL TO ACRADYNE/AIMCO. IN THE ABSENCE OF EXPRESSED WRITTEN PERMISSION, ACRADYNE/AIMCO HAS LOANED THIS COPY WITH THE MUTUAL UNDERSTANDING THAT (A) IT WILL NOT BE USED FOR ANY PURPOSE OTHER THAN FOR THAT IN WHICH IT WAS PROVIDED, (B) THE DATA CONTAINED HEREIN WILL NOT BE DISCLOSED TO OTHERS, (C) IT WILL NOT BE REPRODUCED, AND (D) IT WILL BE RETURNED TO ACRADYNE/AIMCO IMMEDIATELY UPON DEMAND.

| REVISION LEVEL | REVISION RELEASE DATE | DESCRIPTION OF CHANGES MADE TO PART | ECN # | AUTHOR/ APPROVAL |
|----------------|-----------------------|-------------------------------------|-------|------------------|
|                |                       |                                     |       |                  |
|                |                       |                                     |       |                  |
|                |                       |                                     |       |                  |

**UNLESS OTHERWISE SPECIFIED, DIMENSIONS ARE IN INCHES**  
 DIMENSIONS AND TOLERANCING PER ANSI Y14.5  
 SURFACE ROUGHNESS PER ANSI Y14.36

**BLOCK TOLERANCING PER DECIMAL:**  
 .X = ±.030 .XX = ±.010 .XXX = ±.005 .XXXX = ±.0005  
 ANGLE = ±0° 30'

REMOVE BURRS AND SHARP EDGES: R.015 MAX  
 MACHINE SURFACE FINISH: 125 RMS OR BETTER

**DRAWINGS AND TECHNICAL DOCUMENTS CONTROLLED BY:**  
**ACRADYNE MECHANICAL ENGINEERING**

**REACTION BAR, FLAT**  
**12,000Nm**  
**8000-SERIES**

|                  |                                       |                      |
|------------------|---------------------------------------|----------------------|
| SIZE<br><b>B</b> | PART / DRAWING NUMBER<br><b>30303</b> | REVISION<br><b>A</b> |
| SCALE 1:2        | DO NOT SCALE DRAWING                  | SHEET 1 OF 1         |

8 7 6 5 4 3 2 1