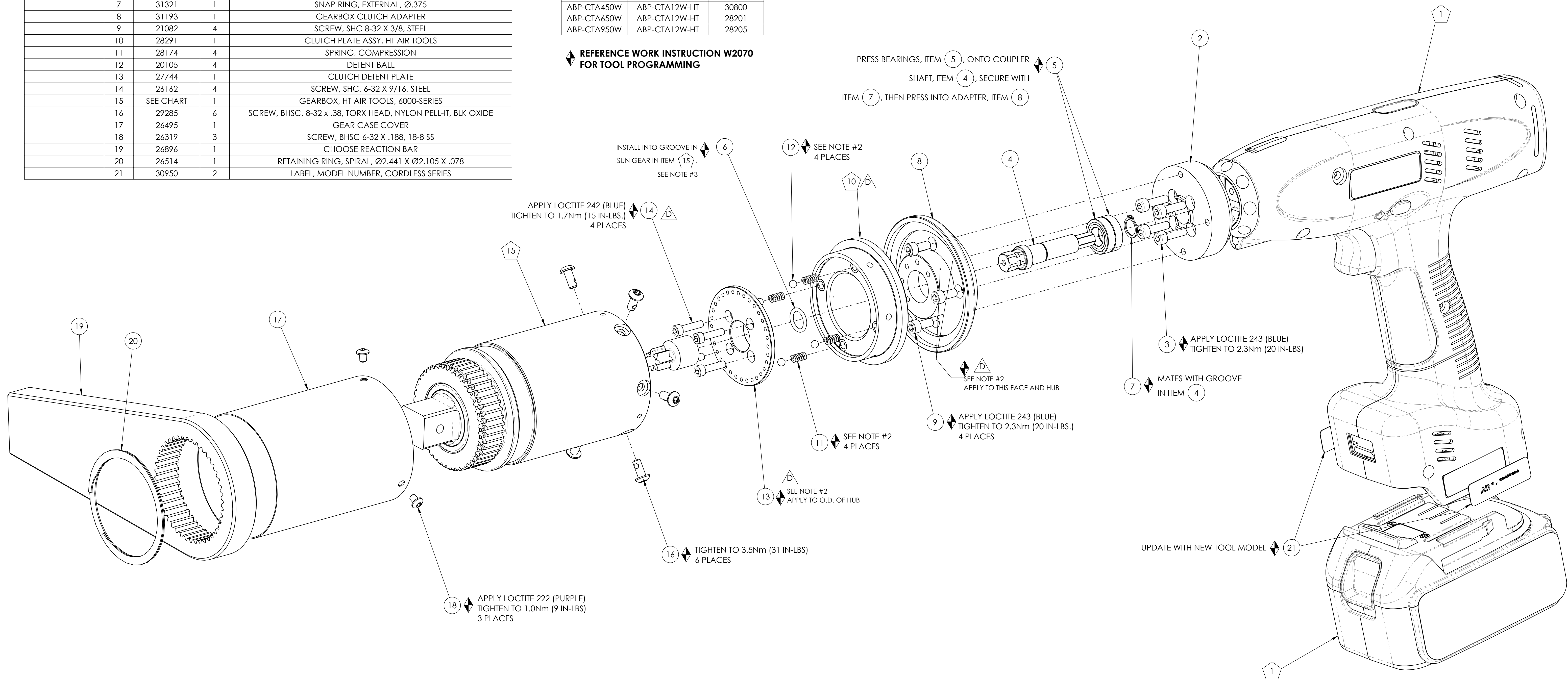



COMMENTS	ITEM NO.	PART NUMBER	QTY.	DESCRIPTION
	1	SEE CHART	1	CORDLESS PISTOL NUTRUNNER, CORDLESS SERIES
	2	31191	1	TRANSDUCER/MOTOR TO CLUTCH ADAPTER
	3	31559	4	SCREW, SHC M4 x 0.7MM x 14MM, STEEL
	4	31192	1	GEARBOX COUPLER SHAFT, 6000 & 7000 SERIES
	5	25533	2	BEARING, BALL, Ø19mm X Ø10mm X 5mm
	6	26299	1	O-RING, PINION
	7	31321	1	SNAP RING, EXTERNAL, Ø.375
	8	31193	1	GEARBOX CLUTCH ADAPTER
	9	21082	4	SCREW, SHC 8-32 X 3/8, STEEL
	10	28291	1	CLUTCH PLATE ASSY, HT AIR TOOLS
	11	28174	4	SPRING, COMPRESSION
	12	20105	4	DETENT BALL
	13	27744	1	CLUTCH DETENT PLATE
	14	26162	4	SCREW, SHC, 6-32 X 9/16, STEEL
	15	SEE CHART	1	GEARBOX, HT AIR TOOLS, 6000-SERIES
	16	29285	6	SCREW, BHSC, 8-32 x .38, TORX HEAD, NYLON PELL-IT, BLK OXIDE
	17	26495	1	GEAR CASE COVER
	18	26319	3	SCREW, BHSC 6-32 X .188, 18-8 SS
	19	26896	1	CHOOSE REACTION BAR
	20	26514	1	RETAINING RING, SPIRAL, Ø2.441 X Ø2.105 X .078
	21	30950	2	LABEL, MODEL NUMBER, CORDLESS SERIES

MODEL NO.	CORDLESS PISTOL NUTRUNNER	GEARBOX ASM.
ABP-CTA120	ABP-CTA12-HT	31798
ABP-CTA250	ABP-CTA12-HT	30776
ABP-CTA450	ABP-CTA12-HT	30800
ABP-CTA650	ABP-CTA12-HT	28201
ABP-CTA950	ABP-CTA12-HT	28205
ABP-CTA120W	ABP-CTA12W-HT	31798
ABP-CTA250W	ABP-CTA12W-HT	30776
ABP-CTA450W	ABP-CTA12W-HT	30800
ABP-CTA650W	ABP-CTA12W-HT	28201
ABP-CTA950W	ABP-CTA12W-HT	28205

 **REFERENCE WORK INSTRUCTION W2070
FOR TOOL PROGRAMMING**



-  ASSEMBLY INSTRUCTIONS
 SUB-ASSEMBLY

- 1) GEARS & SPLINES: LUBRICATE WITH DOW CORNING MOLYKOTE BR2 PLUS GREASE.
- 2) BEARINGS: LUBRICATE WITH CHEVRON SR1 GREASE
- 3) O-RINGS: LUBRICATE WITH O-RING LUBE



DOCUMENT CONTROL

PRINTED COPIES OF THIS DOCUMENT ARE CONSIDERED TO BE UNCONTROLLED DOCUMENTS. HOLDERS ARE RESPONSIBLE FOR VERIFYING THE CURRENT REVISION LEVEL WITH PURCHASING OR ENGINEERING PRIOR TO USE OR FABRICATION. THE CONTROLLED VERSION OF THIS DOCUMENT IS ELECTRONICALLY MAINTAINED.

PROPRIETARY AND CONFIDENTIAL

THIS DRAWING CONTAINS INFORMATION STRICTLY
CONFIDENTIAL TO ACRADYNE/AIMCO. IN THE ABSENCE
OF EXPRESSED WRITTEN PERMISSION, ACRADYNE/AIMCO
HAS LOANED THIS COPY WITH THE MUTUAL UNDERSTANDING
THAT (A) IT WILL NOT BE USED FOR ANY PURPOSE OTHER
THAN FOR THAT IN WHICH IT WAS PROVIDED, (B) THE DATA
CONTAINED HEREIN WILL NOT BE DISCLOSED TO OTHERS,
(C) IT WILL NOT BE REPRODUCED, AND (D) IT WILL BE RETURNED
TO ACRADYNE/AIMCO IMMEDIATELY UPON DEMAND.

REVISION LEVEL	REVISION RELEASE DATE	DESCRIPTION OF CHANGES MADE TO PART	ECN #	AUTHOR/ APPROVAL
REVISION BLOCK				

**UNLESS OTHERWISE SPECIFIED,
DIMENSIONS ARE IN INCHES**
DIMENSIONS AND TOLERANCING PER ANSI Y14.5
SURFACE ROUGHNESS PER ANSI Y14.36

BLOCK TOLERANCING PER DECIMAL:
 $.X = \pm .030$ $.XX = \pm .010$ $.XXX = \pm .005$ $.XXXX = \pm .0005$
 ANGLE = $\pm 0^{\circ} 30'$

REMOVE BURRS AND SHARP EDGES: R.015 MAX
MACHINE SURFACE FINISH: 125 RMS OR BETTER

**DRAWINGS AND TECHNICAL DOCUMENTS CONTROLLED BY:
ACRADYNE MECHANICAL ENGINEERING**

CORDLESS HT PISTOL NUTRUNNER

HT CORDLESS, 6000-SERIES

SIZE D	PART / DRAWING NUMBER ABP-CTA__0__	REVISION D
SCALE 1:1	DO NOT SCALE DRAWING	SHEET 1 OF 2

