

COMMENTS	ITEM NO.	PART NUMBER	QTY.	DESCRIPTION
	1	26213	1	PISTOL MOTOR ASSEMBLY
	2	26198	1	THRUST WASHER
	3	26074	1	BELLEVILLE WASHER
	4	SEE CHART	1	GEAR TRAIN ASM.
	5	26530	2	DOWEL PIN, $\phi 1/8 \times 1.00$, STEEL
	6	27391	1	PIN RETAINER RING
	7	20912	1	WAVE SPRING --- 3000 SERIES
	8	SEE CHART	1	ASSEMBLY, GEAR CARRIER
	9	20911	2	BELLEVILLE WASHER
	10	SEE CHART	1	SLIDING OUTPUT SPINDLE ASM
	11	20913	2	PIN, RETAINING
	12	25574	2	STANDOFF M-F, 4-40x1/4, 3/16 HEX, SS
	13	26078	2	SHC SCREW, 4-40, BLACK OXIDE
	14	26080	1	O-RING, LED LIGHT RING COVER
	15	26079	1	LIGHT RING COVER, LED
	16	20534	1	3000 SERIAL/MODEL LABEL
	17	26397	1	SUPPORT, CIRCUIT BOARD
	18	25847	1	TID BOARD ASM.
	19	26404	2	SCREW, BHSC, 4-40 X 1/4, STEEL
	20	24917	4	BHCS, #4 x .38 LG TAP-TITE
	21	26396	1	HOUSING, CIRCUIT BOARD
	22	26439	4	SCREW, FHSC, 6-32 x .500, STEEL, BLACK OXIDE
	23	26081	1	MOTOR HOUSING COVER
	24	25385	4	SCREW, FHSC 6-32 X .375, STEEL
	25	22141	1	SAFETY LABEL
	26	26398	1	STRAIGHT ADAPTER
	27	26088	6	SCREW, BHCS 8-32X.25, STEEL, BLACK OXIDE
	28	25745	5	SCREW, BHSC 4-40 STEEL, BLACK OXIDE
	29	26359	1	FIXTURE TOOL LED BOARD ASM.
	30	26407	1	TOOL CONNECTOR ASM., FIXTURED

MODEL NO.	GEAR TRAIN ASM.	GEAR CARRIER ASM.	SLIDING OUTPUT SPINDLE ASM.
AEF35075A-2	26116	20924	26405
AEF35090A-2	26115	26117	26405
AEF35110A-2	26114	20924	26405
AEF35135A-2	26113	26117	26405
AEF35170A-2	26111	26117	27689

◆ ASSEMBLY INSTRUCTIONS
 ◻ SUB-ASSEMBLY

- 1) GEARS & SPLINES: LUBRICATE WITH DOW CORNING MOLYKOTE BR2 PLUS GREASE.
- 2) BEARINGS: LUBRICATE WITH CHEVRON SR1 GREASE
- 3) O-RINGS: LUBRICATE WITH O-RING LUBE

REQUIRED TOOLING
LOCTITE 243 (BLUE)
1/16 HEX WRENCH
5/64 HEX WRENCH
3/32 HEX WRENCH
7/32 HEX WRENCH
#1 PHILLIPS DRIVER



DOCUMENT CONTROL
 PRINTED COPIES OF THIS DOCUMENT ARE CONSIDERED TO BE UNCONTROLLED DOCUMENTS. HOLDERS ARE RESPONSIBLE FOR VERIFYING THE CURRENT REVISION LEVEL WITH PURCHASING OR ENGINEERING PRIOR TO USE OR FABRICATION. THE CONTROLLED VERSION OF THIS DOCUMENT IS ELECTRONICALLY MAINTAINED.

PROPRIETARY AND CONFIDENTIAL
 THIS DRAWING CONTAINS INFORMATION STRICTLY CONFIDENTIAL TO ACRADYNE/AIMCO. IN THE ABSENCE OF EXPRESSED WRITTEN PERMISSION, ACRADYNE/AIMCO HAS LOANED THIS COPY WITH THE MUTUAL UNDERSTANDING THAT (A) IT WILL NOT BE USED FOR ANY PURPOSE OTHER THAN FOR THAT IN WHICH IT WAS PROVIDED, (B) THE DATA CONTAINED HEREIN WILL NOT BE DISCLOSED TO OTHERS, (C) IT WILL NOT BE REPRODUCED, AND (D) IT WILL BE RETURNED TO ACRADYNE/AIMCO IMMEDIATELY UPON DEMAND.

REVISION LEVEL	REVISION RELEASE DATE	DESCRIPTION OF CHANGES MADE TO PART	ECN #	AUTHOR/ APPROVAL

UNLESS OTHERWISE SPECIFIED, DIMENSIONS ARE IN INCHES
 DIMENSIONS AND TOLERANCING PER ANSI Y14.5 SURFACE ROUGHNESS PER ANSI Y14.36

BLOCK TOLERANCING PER DECIMAL:
 .X = ±.030 .XX = ±.010 .XXX = ±.005 .XXXX = ±.0005
 ANGLE = 30°/30°

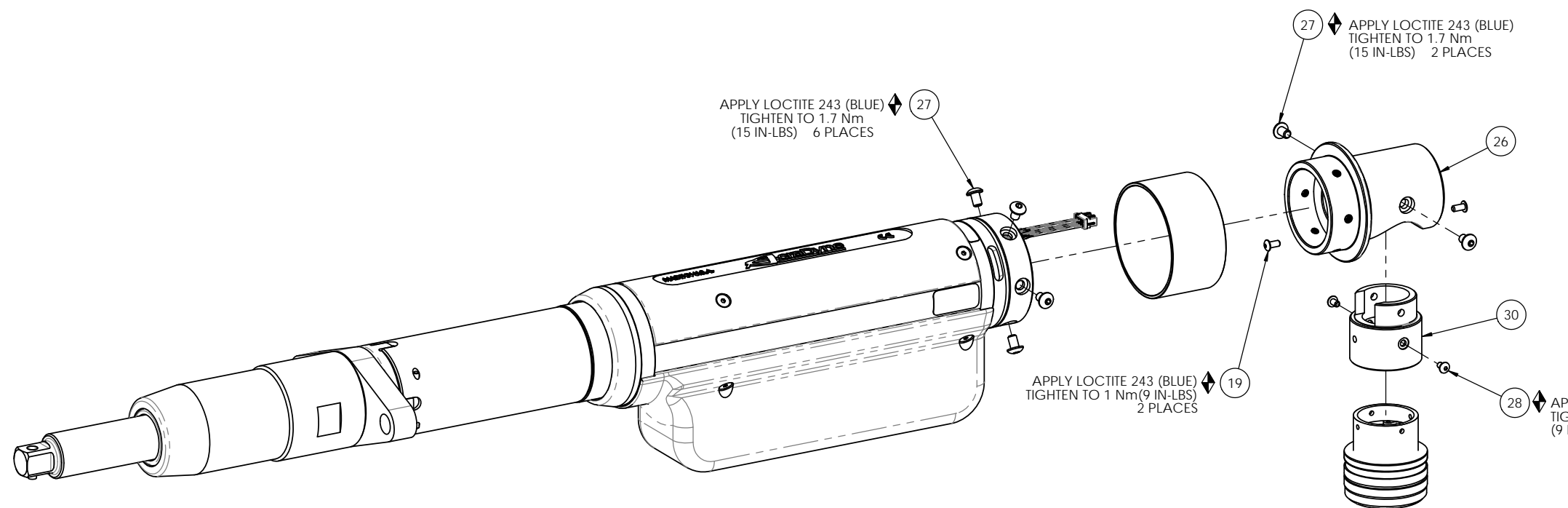
REMOVE BURRS AND SHARP EDGES: R.015 MAX MACHINE SURFACE FINISH: 125 RMS OR BETTER

DRAWINGS AND TECHNICAL DOCUMENTS CONTROLLED BY:
ACRADYNE MECHANICAL ENGINEERING

AEF35__A_-2 FIXTURED NUTRUNNER 5000 SERIES, GEN 3

SIZE	PART / DRAWING NUMBER	REVISION
D	AEF35__A_-2	D

SCALE: 3:4 DO NOT SCALE DRAWING SHEET 1 OF 4



COMMENTS	ITEM NO.	PART NUMBER	QTY.	DESCRIPTION
	1	26213	1	PISTOL MOTOR ASSEMBLY
	2	26198	1	THRUST WASHER
	3	26074	1	BELLEVILLE WASHER
	4	SEE CHART	1	GEAR TRAIN ASM.
	5	26530	2	DOWEL PIN, Ø1/8 x 1.00, STEEL
	6	27391	1	PIN RETAINER RING
	7	20912	1	WAVE SPRING --- 3000 SERIES
	8	SEE CHART	1	ASSEMBLY, GEAR CARRIER
	9	20911	2	BELLEVILLE WASHER
	10	SEE CHART	1	SLIDING OUTPUT SPINDLE ASM
	11	20913	2	PIN, RETAINING
	12	25574	2	STANDOFF M-F, 4-40x1/4, 3/16 HEX, SS
	13	26359	1	FIXTURE TOOL LED BOARD ASM.
	14	26078	2	SHC SCREW, 4-40, BLACK OXIDE
	15	26080	1	O-RING, LED LIGHT RING COVER
	16	26079	1	LIGHT RING COVER, LED
	17	20534	1	3000 SERIAL/MODEL LABEL
	18	26397	1	SUPPORT, CIRCUIT BOARD
	19	25847	1	TID BOARD ASM.
	20	26404	4	SCREW, BHSC, 4-40 X 1/4, STEEL
	21	24917	4	BHCS, #4 x .38 LG TAP-TITE
	22	26396	1	HOUSING, CIRCUIT BOARD
	23	26439	4	SCREW, FHSC, 6-32 x .500, STEEL, BLACK OXIDE
	24	26081	1	MOTOR HOUSING COVER
	25	25385	4	SCREW, FHSC 6-32 X .375, STEEL
	26	22141	1	SAFETY LABEL
	27	26399	1	RIGHT ANGLE ADAPTER
	28	26088	8	SCREW, BHCS 8-32X.25, STEEL, BLACK OXIDE
	29	25745	3	SCREW, BHSC 4-40 STEEL, BLACK OXIDE
	30	26400	1	SHELL ADAPTER, TOOL CONNECTOR
	31	26407	1	TOOL CONNECTOR ASM., FIXTURED

FOR COMPLETE TOOL ASSEMBLY INSTRUCTIONS SEE DRAWING AEF35__A_-2, SHEET 1

MODEL NO.	GEAR TRAIN ASM.	GEAR CARRIER ASM.	SLIDING OUTPUT SPINDLE ASM.
AEF35075AB-2	26116	20924	26405
AEF35090AB-2	26115	26117	26405
AEF35110AB-2	26114	20924	26405
AEF35135AB-2	26113	26117	26405
AEF35170AB-2	26111	26117	27689

- ASSEMBLY INSTRUCTIONS
- SUB-ASSEMBLY

- GEARS & SPLINES: LUBRICATE WITH DOW CORNING MOLYKOTE BR2 PLUS GREASE.
- BEARINGS: LUBRICATE WITH CHEVRON SR1 GREASE
- O-RINGS: LUBRICATE WITH O-RING LUBE

REQUIRED TOOLING
LOCTITE 243 (BLUE)
1/16 HEX WRENCH
5/64 HEX WRENCH
3/32 HEX WRENCH
7/32 HEX WRENCH
#1 PHILLIPS DRIVER



DOCUMENT CONTROL
 PRINTED COPIES OF THIS DOCUMENT ARE CONSIDERED TO BE UNCONTROLLED DOCUMENTS. HOLDERS ARE RESPONSIBLE FOR VERIFYING THE CURRENT REVISION LEVEL WITH PURCHASING OR ENGINEERING PRIOR TO USE OR FABRICATION. THE CONTROLLED VERSION OF THIS DOCUMENT IS ELECTRONICALLY MAINTAINED.

PROPRIETARY AND CONFIDENTIAL
 THIS DRAWING CONTAINS INFORMATION STRICTLY CONFIDENTIAL TO ACRADYNE/AIMCO. IN THE ABSENCE OF EXPRESSED WRITTEN PERMISSION, ACRADYNE/AIMCO HAS LOANED THIS COPY WITH THE MUTUAL UNDERSTANDING THAT (A) IT WILL NOT BE USED FOR ANY PURPOSE OTHER THAN FOR THAT IN WHICH IT WAS PROVIDED, (B) THE DATA CONTAINED HEREIN WILL NOT BE DISCLOSED TO OTHERS, (C) IT WILL NOT BE REPRODUCED, AND (D) IT WILL BE RETURNED TO ACRADYNE/AIMCO IMMEDIATELY UPON DEMAND.

REVISION LEVEL	REVISION RELEASE DATE	DESCRIPTION OF CHANGES MADE TO PART	ECN #	AUTHOR/ APPROVAL
REVISION BLOCK				

UNLESS OTHERWISE SPECIFIED, DIMENSIONS ARE IN INCHES
 DIMENSIONS AND TOLERANCING PER ANSI Y14.5 SURFACE ROUGHNESS PER ANSI Y14.36

BLOCK TOLERANCING PER DECIMAL:
 .X = ±.030 .XX = ±.010 .XXX = ±.005 .XXXX = ±.0005
 ANGLE = 80°/30°

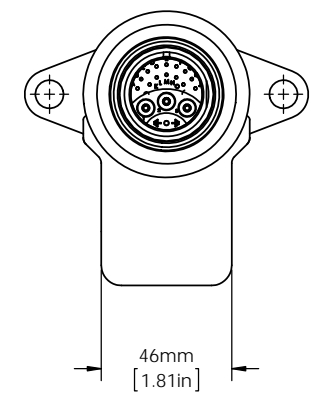
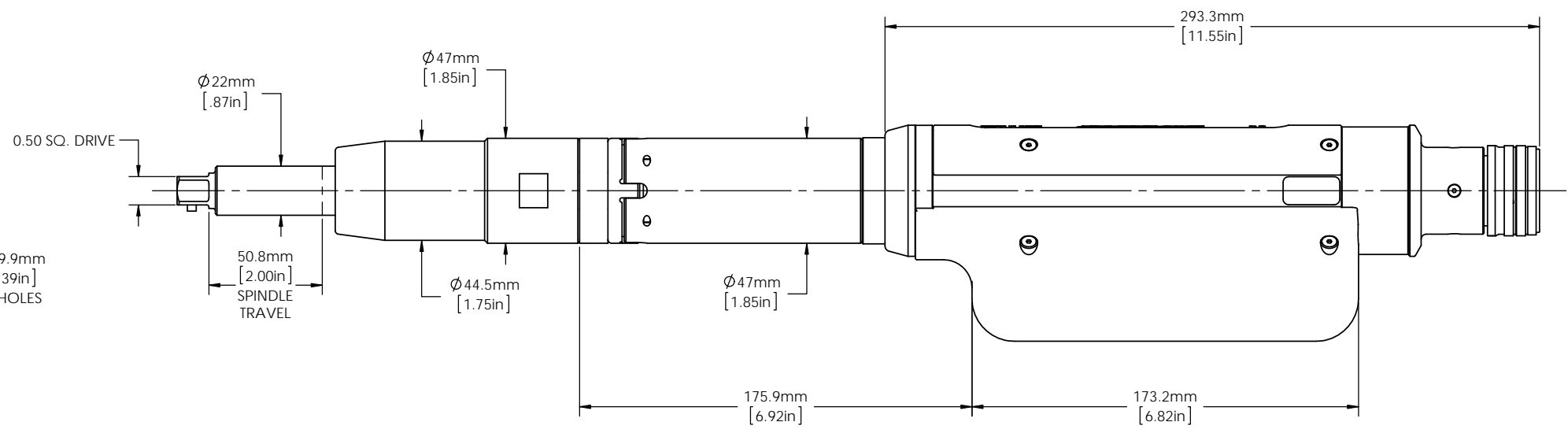
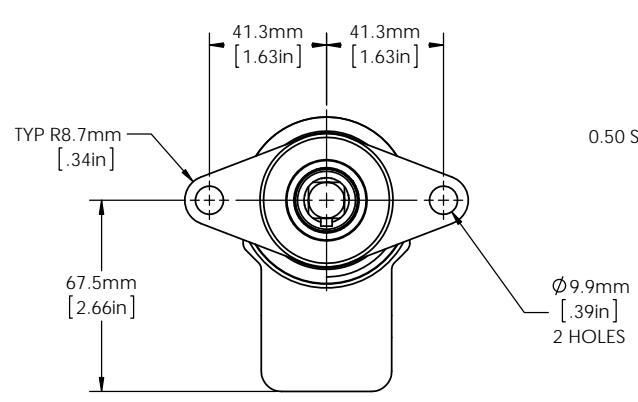
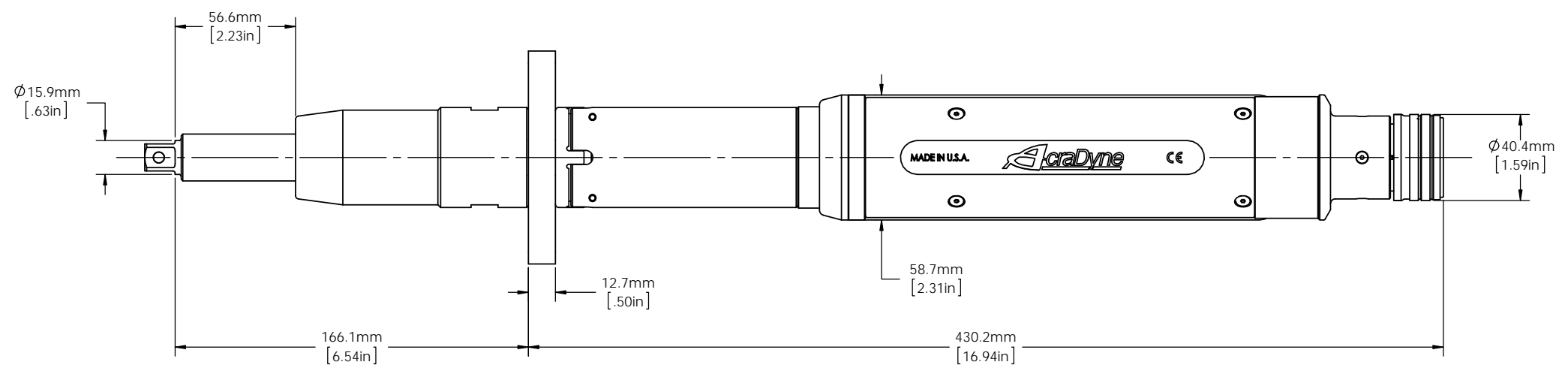
REMOVE BURRS AND SHARP EDGES: R.015 MAX MACHINE SURFACE FINISH: 125 RMS OR BETTER

DRAWINGS AND TECHNICAL DOCUMENTS CONTROLLED BY:
ACRADYNE MECHANICAL ENGINEERING

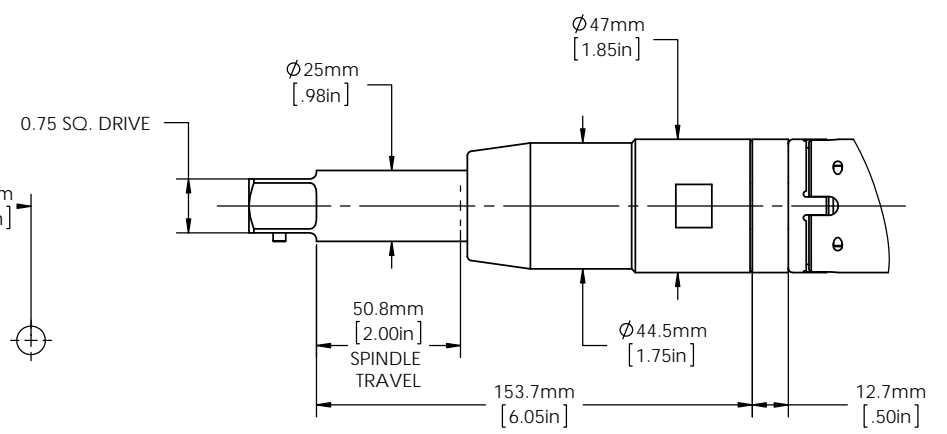
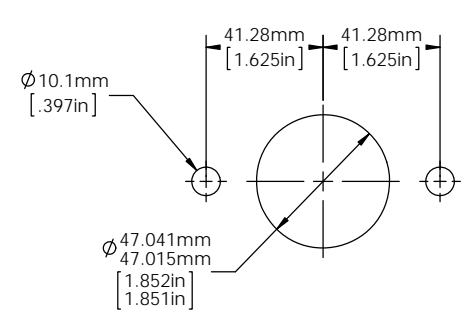
AEF35__A_-2 FIXTURED NUTRUNNER 5000 SERIES, GEN III

SIZE	PART / DRAWING NUMBER	REVISION
D	AEF35__A_-2	D

SCALE 3:4 DO NOT SCALE DRAWING SHEET 2 OF 4



AEF35075A-2, AEF35090A-2, AEF35110A-2, AEF35135A-2
MODEL TOOLS



AEF35170A-2 MODEL TOOL

MOUNTING PLATE DIMENSIONS
(SUPPLIED BY CUSTOMER)
SCALE 1:1

CATALOG NO.	MODEL NO.
	AEF35075A-2
	AEF35090A-2
	AEF35110A-2
	AEF35135A-2
AEF35170A-2	



DOCUMENT CONTROL
PRINTED COPIES OF THIS DOCUMENT ARE CONSIDERED TO BE UNCONTROLLED DOCUMENTS. HOLDERS ARE RESPONSIBLE FOR VERIFYING THE CURRENT REVISION LEVEL WITH PURCHASING OR ENGINEERING PRIOR TO USE OR FABRICATION. THE CONTROLLED VERSION OF THIS DOCUMENT IS ELECTRONICALLY MAINTAINED.

PROPRIETARY AND CONFIDENTIAL
THIS DRAWING CONTAINS INFORMATION STRICTLY CONFIDENTIAL TO ACRADYNE/AIMCO. IN THE ABSENCE OF EXPRESSED WRITTEN PERMISSION, ACRADYNE/AIMCO HAS LOANED THIS COPY WITH THE MUTUAL UNDERSTANDING THAT (A) IT WILL NOT BE USED FOR ANY PURPOSE OTHER THAN FOR THAT IN WHICH IT WAS PROVIDED, (B) THE DATA CONTAINED HEREIN WILL NOT BE DISCLOSED TO OTHERS, (C) IT WILL NOT BE REPRODUCED, AND (D) IT WILL BE RETURNED TO ACRADYNE/AIMCO IMMEDIATELY UPON DEMAND.

REVISION LEVEL	REVISION RELEASE DATE	DESCRIPTION OF CHANGES MADE TO PART	ECN #	AUTHOR/ APPROVAL

UNLESS OTHERWISE SPECIFIED, DIMENSIONS ARE IN INCHES
DIMENSIONS AND TOLERANCING PER ANSI Y14.5
SURFACE ROUGHNESS PER ANSI Y14.36

BLOCK TOLERANCING PER DECIMAL:
.X = ±.030 .XX = ±.010 .XXX = ±.005 .XXXX = ±.0005
ANGLE = 50°/30'

REMOVE BURRS AND SHARP EDGES: R.015 MAX
MACHINE SURFACE FINISH: 125 RMS OR BETTER

DRAWINGS AND TECHNICAL DOCUMENTS CONTROLLED BY:
ACRADYNE MECHANICAL ENGINEERING

AEF35__A_-2 TOOL OUTLINE REAR CABLE EXIT 5000 SERIES, GEN III		
SIZE	PART / DRAWING NUMBER	REVISION
D	AEF35__A_-2	D
SCALE 3:4	DO NOT SCALE DRAWING	SHEET 3 OF 4