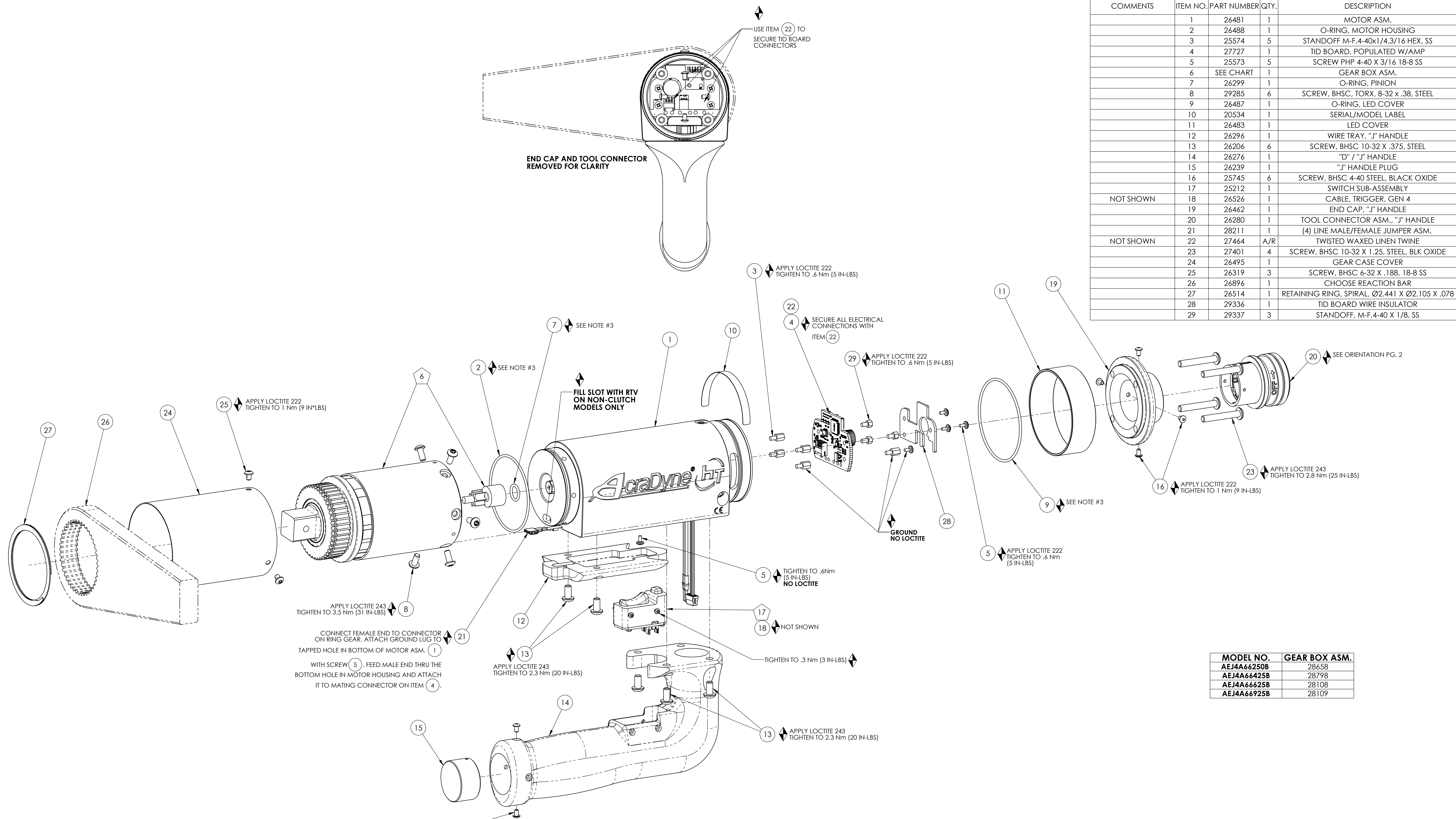


COMMENTS	ITEM NO.	PART NUMBER	QTY.	DESCRIPTION
	1	26481	1	MOTOR ASM.
	2	26488	1	O-RING, MOTOR HOUSING
	3	25574	5	STANDOFF M-F, 4-40x1/4, 3/16 HEX, SS
	4	27727	1	TID BOARD, POPULATED W/AMP
	5	25573	5	SCREW PHP 4-40 X 3/16 18-8 SS
	6	SEE CHART	1	GEAR BOX ASM.
	7	26299	1	O-RING, PINION
	8	29285	6	SCREW, BHSC, TORX, 8-32 x .38, STEEL
	9	26487	1	O-RING, LED COVER
	10	20534	1	SERIAL/MODEL LABEL
	11	26483	1	LED COVER
	12	26296	1	WIRE TRAY, "J" HANDLE
	13	26206	6	SCREW, BHSC 10-32 X .375, STEEL
	14	26276	1	"D" / "J" HANDLE
	15	26239	1	"J" HANDLE PLUG
	16	25745	6	SCREW, BHSC 4-40 STEEL, BLACK OXIDE
	17	25212	1	SWITCH SUB-ASSEMBLY
NOT SHOWN	18	26526	1	CABLE, TRIGGER, GEN 4
	19	26462	1	END CAP, "J" HANDLE
	20	26280	1	TOOL CONNECTOR ASM., "J" HANDLE
	21	28211	1	(4) LINE MALE/FEMALE JUMPER ASM.
NOT SHOWN	22	27464	A/R	TWISTED WAXED LINEN TWINE
	23	27401	4	SCREW, BHSC 10-32 X 1.25, STEEL, BLK OXIDE
	24	26495	1	GEAR CASE COVER
	25	26319	3	SCREW, BHSC 6-32 X .188, 18-8 SS
	26	26896	1	CHOOSE REACTION BAR
	27	26514	1	RETAINING RING, SPIRAL, Ø2.441 X Ø2.105 X .078
	28	29336	1	TID BOARD WIRE INSULATOR
	29	29337	3	STANDOFF, M-F, 4-40 X 1/8, SS



MODEL NO.	GEAR BOX ASM.
AEJ4A66250B	28658
AEJ4A66425B	28798
AEJ4A66625B	28108
AEJ4A66925B	28109

- ◆ ASSEMBLY INSTRUCTIONS
- ◊ SUB-ASSEMBLY

- GEARS & SPLINES: LUBRICATE WITH DOW CORNING MOLYKOTE BR2 PLUS GREASE.
- BEARINGS: LUBRICATE WITH CHEVRON SR1 GREASE
- O-RINGS: LUBRICATE WITH O-RING LUBE

◆ 16
APPLY LOCTITE 222
TIGHTEN TO 1 Nm (9 IN-LBS)

AIMCO
AcraDyne
A Division of AIMCO
10000 SE PINE STREET
PORTLAND, OREGON 97216
503.254.6600

DOCUMENT CONTROL
PRINTED COPIES OF THIS DOCUMENT ARE CONSIDERED TO BE UNCONTROLLED DOCUMENTS. HOLDERS ARE RESPONSIBLE FOR VERIFYING THE CURRENT REVISION LEVEL WITH PURCHASING OR ENGINEERING PRIOR TO USE OR FABRICATION. THE CONTROLLED VERSION OF THIS DOCUMENT IS ELECTRONICALLY MAINTAINED.

PROPRIETARY AND CONFIDENTIAL
THIS DRAWING CONTAINS INFORMATION STRICTLY CONFIDENTIAL TO ACRADYNE/AIMCO. IN THE ABSENCE OF EXPRESSED WRITTEN PERMISSION, ACRADYNE/AIMCO HAS LOANED THIS COPY WITH THE MUTUAL UNDERSTANDING THAT (A) IT WILL NOT BE USED FOR ANY PURPOSE OTHER THAN FOR THAT IN WHICH IT WAS PROVIDED, (B) THE DATA CONTAINED HEREIN WILL NOT BE DISCLOSED TO OTHERS, (C) IT WILL NOT BE REPRODUCED, AND (D) IT WILL BE RETURNED TO ACRADYNE/AIMCO IMMEDIATELY UPON DEMAND.

REVISION LEVEL	REVISION RELEASE DATE	DESCRIPTION OF CHANGES MADE TO PART	ECN #	AUTHOR/ APPROVAL
REVISION BLOCK				

UNLESS OTHERWISE SPECIFIED, DIMENSIONS ARE IN INCHES
DIMENSIONS AND TOLERANCING PER ANSI Y14.5
SURFACE ROUGHNESS PER ANSI Y14.36

BLOCK TOLERANCING PER DECIMAL:
X = ±.030 .XX = ±.010 .XXX = ±.005 .XXXX = ±.0005
ANGLE = ±0° 30'

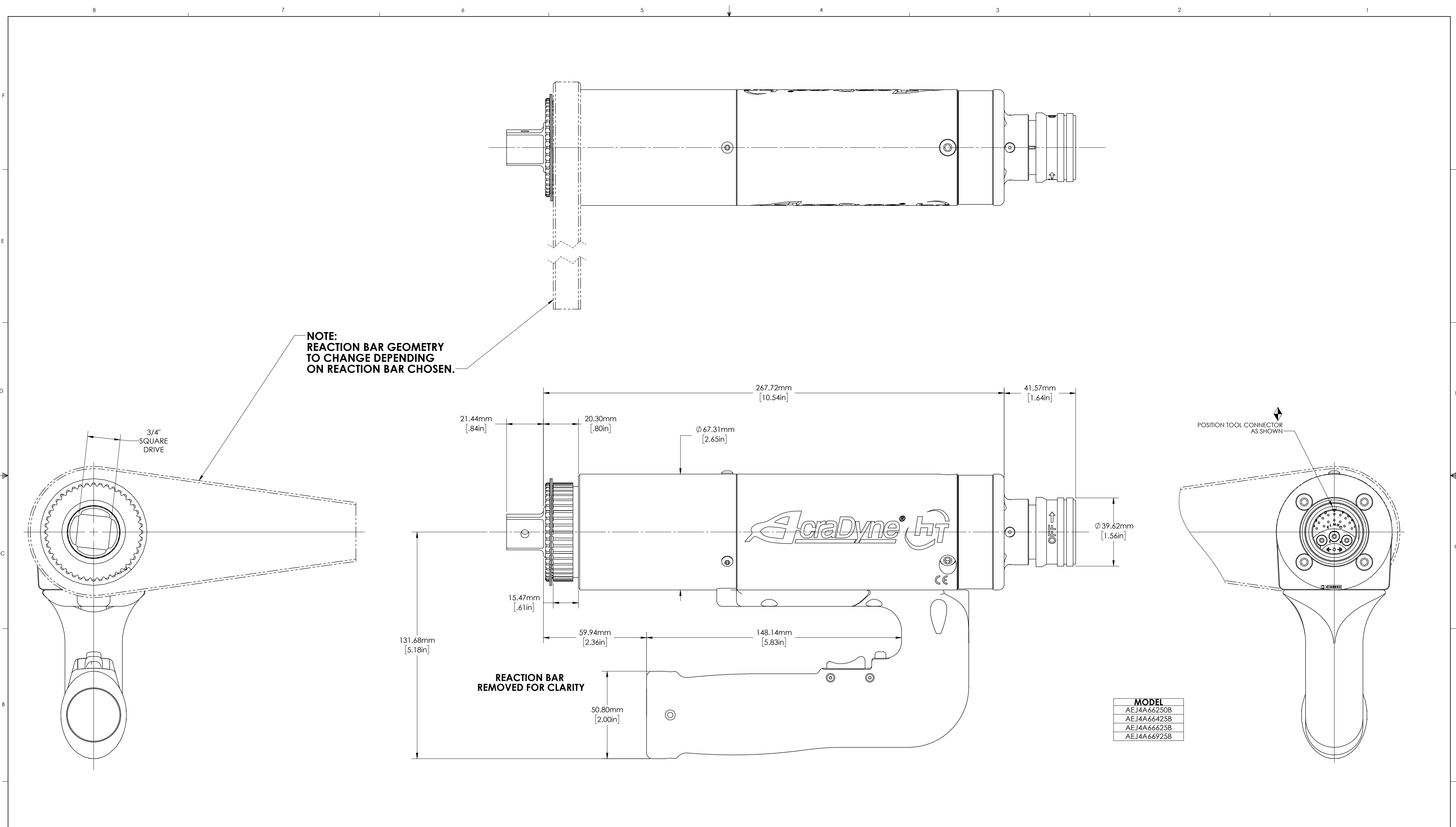
REMOVE BURRS AND SHARP EDGES: R.015 MAX
MACHINE SURFACE FINISH: 125 RMS OR BETTER

DRAWINGS AND TECHNICAL DOCUMENTS CONTROLLED BY:
ACRADYNE MECHANICAL ENGINEERING

**"J" HANDLE NUTRUNNER
6000 SERIES**

SIZE	PART / DRAWING NUMBER	REVISION
D	AEJ4A66__B	A

SCALE 3:4 DO NOT SCALE DRAWING SHEET 1 OF 2



DOCUMENT CONTROL
PRINTED COPIES OF THIS DOCUMENT ARE CONSIDERED TO BE UNCONTROLLED DOCUMENTS. HOLDERS ARE RESPONSIBLE FOR VERIFYING THE CURRENT REVISION LEVEL WITH PURCHASING OR ENGINEERING PRIOR TO USE OR FABRICATION. THE CONTROLLED VERSION OF THIS DOCUMENT IS ELECTRONICALLY MAINTAINED.

PROPRIETARY AND CONFIDENTIAL
THIS DRAWING CONTAINS INFORMATION STRICTLY CONFIDENTIAL TO ACRADYNE/AIMCO. IN THE ABSENCE OF EXPRESSED WRITTEN PERMISSION, ACRADYNE/AIMCO HAS LOANED THIS COPY WITH THE MUTUAL UNDERSTANDING THAT (A) IT WILL NOT BE USED FOR ANY PURPOSE OTHER THAN FOR THAT IN WHICH IT WAS PROVIDED, (B) THE DATA CONTAINED HEREIN WILL NOT BE DISCLOSED TO OTHERS, (C) IT WILL NOT BE REPRODUCED, AND (D) IT WILL BE RETURNED TO ACRADYNE/AIMCO IMMEDIATELY UPON DEMAND.

REVISION LEVEL	REVISION RELEASE DATE	DESCRIPTION OF CHANGES MADE TO PART	ECN #	AUTHOR/ APPROVAL
REVISION BLOCK				

UNLESS OTHERWISE SPECIFIED, DIMENSIONS ARE IN INCHES
DIMENSIONS AND TOLERANCING PER ANSI Y14.5
SURFACE ROUGHNESS PER ANSI Y14.36

BLOCK TOLERANCING PER DECIMAL:
X = ±.030 .XX = ±.010 .XXX = ±.005 .XXXX = ±.0005
ANGLE = ±0° 30'

REMOVE BURRS AND SHARP EDGES: R.015 MAX
MACHINE SURFACE FINISH: 125 RMS OR BETTER

DRAWINGS AND TECHNICAL DOCUMENTS CONTROLLED BY:
ACRADYNE MECHANICAL ENGINEERING

"J" HANDLE NUTRUNNER 6000 SERIES		
SIZE	PART / DRAWING NUMBER	REVISION
D	AEJ4A66__B	A
SCALE 1:1	DO NOT SCALE DRAWING	SHEET 2 OF 2