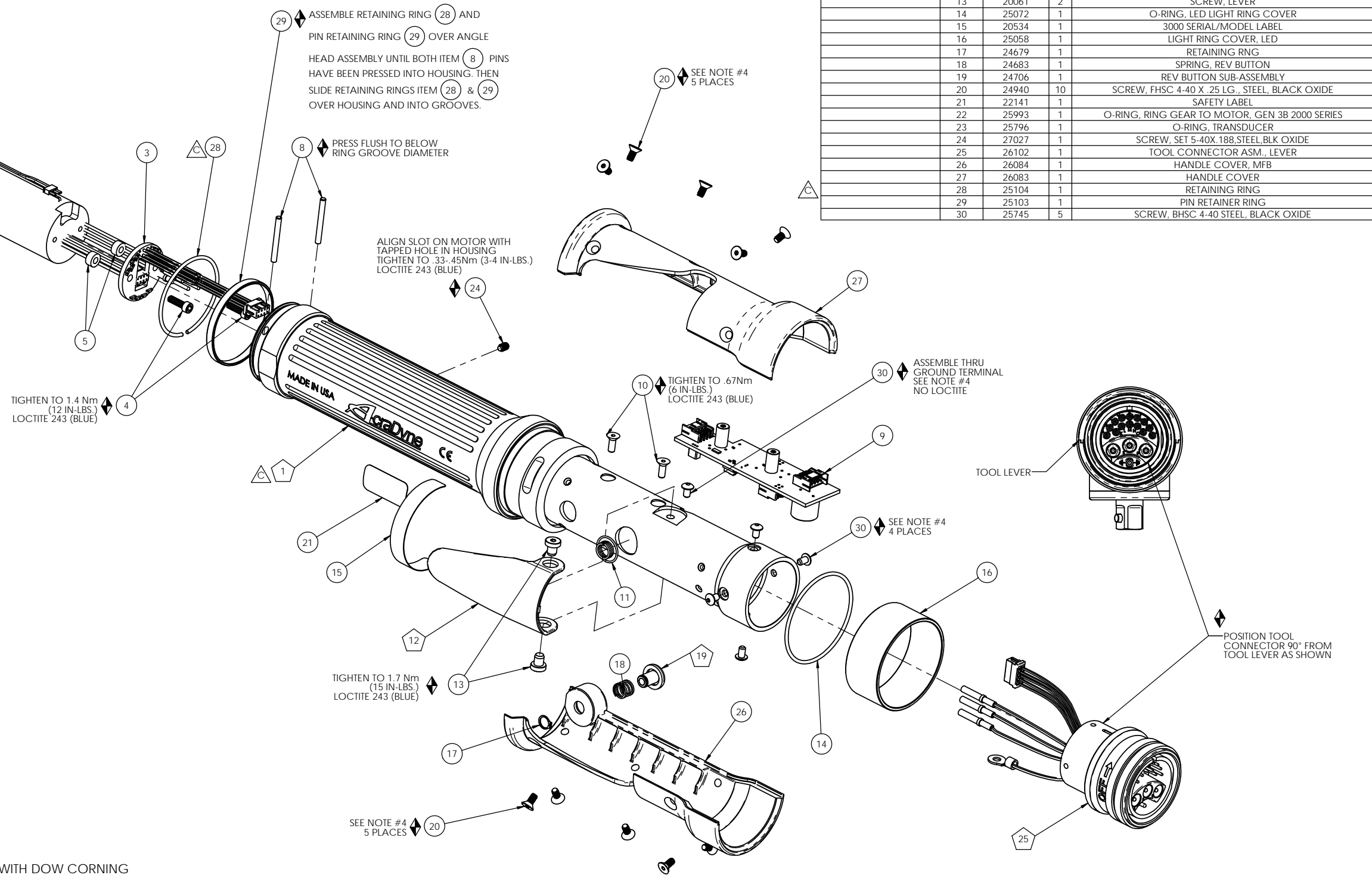


MODEL NO.	ANGLE HEAD G.C. ASM	MOTOR ASM
AEN32015C	26000	25425
AEN32025C	25097	25425
AEN32030C	27525	25425
AEN32040C	27526	25426

COMMENTS	ITEM NO.	PART NUMBER	QTY.	DESCRIPTION
	1	27030	1	HOUSING MOTOR/HANDLE ASSY
	2	SEE CHART	1	MOTOR ASM., 7:1, 2000 SERIES GEN III
	3	25063	1	LED BOARD ASM.
	4	25075	2	SCREW, SHC 4-40X.375, STEEL, BLACK OXIDE
	5	25429	2	STAND-OFF, LED, 2000 SERIES
	6	SEE CHART	1	ANGLE HEAD G. C. ASM
	7	24272	2	ADAPTOR INSERT
	8	24324	2	DOWEL PIN 3/32 Dia x 7/8 LONG
	9	25847	1	TID BOARD ASM.
	10	24934	2	SCREW, FHC 4-40 X .312, STEEL, BLACK OXIDE
	11	20132	1	THROTTLE SPRING
	12	26532	1	GEN 3 TRIGGER ASSY, CAST
	13	20061	2	SCREW, LEVER
	14	25072	1	O-RING, LED LIGHT RING COVER
	15	20534	1	3000 SERIAL/MODEL LABEL
	16	25058	1	LIGHT RING COVER, LED
	17	24679	1	RETAINING RING
	18	24683	1	SPRING, REV BUTTON
	19	24706	1	REV BUTTON SUB-ASSEMBLY
	20	24940	10	SCREW, FHSC 4-40 X .25 LG., STEEL, BLACK OXIDE
	21	22141	1	SAFETY LABEL
	22	25993	1	O-RING, RING GEAR TO MOTOR, GEN 3B 2000 SERIES
	23	25796	1	O-RING, TRANSDUCER
	24	27027	1	SCREW, SET 5-40X.188, STEEL, BLK OXIDE
	25	26102	1	TOOL CONNECTOR ASM., LEVER
	26	26084	1	HANDLE COVER, MFB
	27	26083	1	HANDLE COVER
	28	25104	1	RETAINING RING
	29	25103	1	PIN RETAINER RING
	30	25745	5	SCREW, BHSC 4-40 STEEL, BLACK OXIDE



- ◆ ASSEMBLY INSTRUCTIONS
 - ◊ SUB-ASSEMBLY
- 1) GEARS & SPLINES: LUBRICATE WITH DOW CORNING MOLYKOTE BR2 PLUS GREASE.
 - 2) BEARINGS: LUBRICATE WITH CHEVRON SR1 GREASE
 - 3) O-RINGS: LUBRICATE WITH O-RING LUBE
 - 4) TIGHTEN TO 1 NM (9 IN-LBS.) LOCTITE 243 (BLUE)

REQUIRED TOOLING
LOCTITE 243 (BLUE)
1/16 HEX WRENCH
5/64 HEX WRENCH
3/32 HEX WRENCH
SNAP RING PLIERS - EXTERNAL TYPE



DOCUMENT CONTROL
 PRINTED COPIES OF THIS DOCUMENT ARE CONSIDERED TO BE UNCONTROLLED DOCUMENTS. HOLDERS ARE RESPONSIBLE FOR VERIFYING THE CURRENT REVISION LEVEL WITH PURCHASING OR ENGINEERING PRIOR TO USE OR FABRICATION. THE CONTROLLED VERSION OF THIS DOCUMENT IS ELECTRONICALLY MAINTAINED.

PROPRIETARY AND CONFIDENTIAL
 THIS DRAWING CONTAINS INFORMATION STRICTLY CONFIDENTIAL TO ACRADYNE/AIMCO. IN THE ABSENCE OF EXPRESSED WRITTEN PERMISSION, ACRADYNE/AIMCO HAS LOANED THIS COPY WITH THE MUTUAL UNDERSTANDING THAT (A) IT WILL NOT BE USED FOR ANY PURPOSE OTHER THAN FOR THAT IN WHICH IT WAS PROVIDED, (B) THE DATA CONTAINED HEREIN WILL NOT BE DISCLOSED TO OTHERS, (C) IT WILL NOT BE REPRODUCED, AND (D) IT WILL BE RETURNED TO ACRADYNE/AIMCO IMMEDIATELY UPON DEMAND.

REVISION LEVEL	REVISION RELEASE DATE	DESCRIPTION OF CHANGES MADE TO PART	ECN #	AUTHOR/ APPROVAL

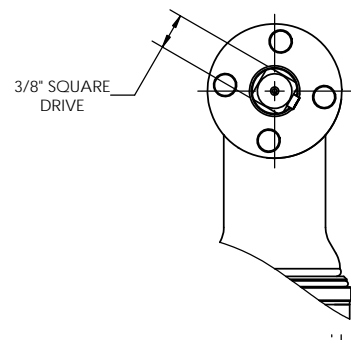
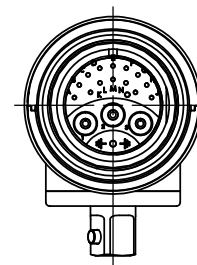
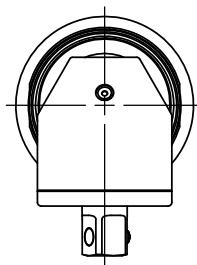
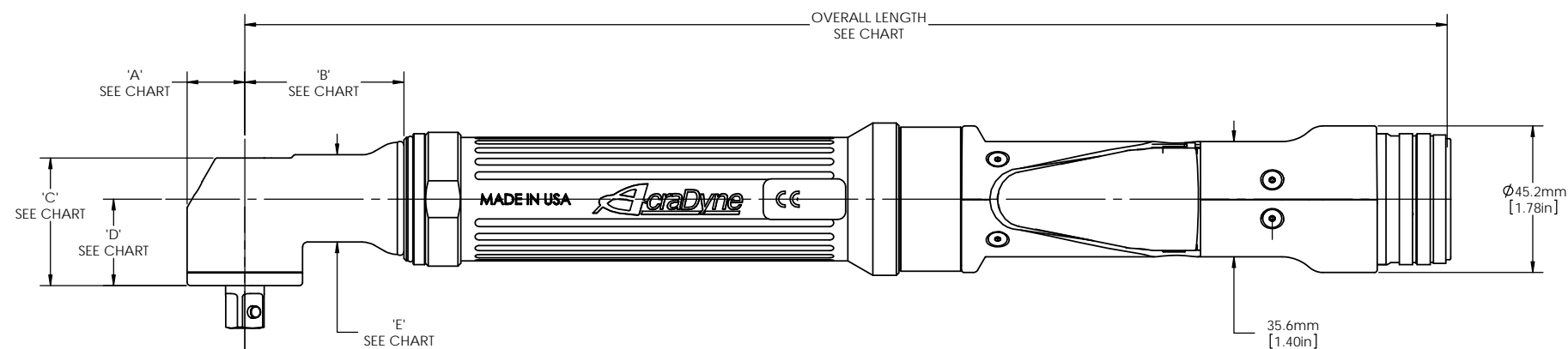
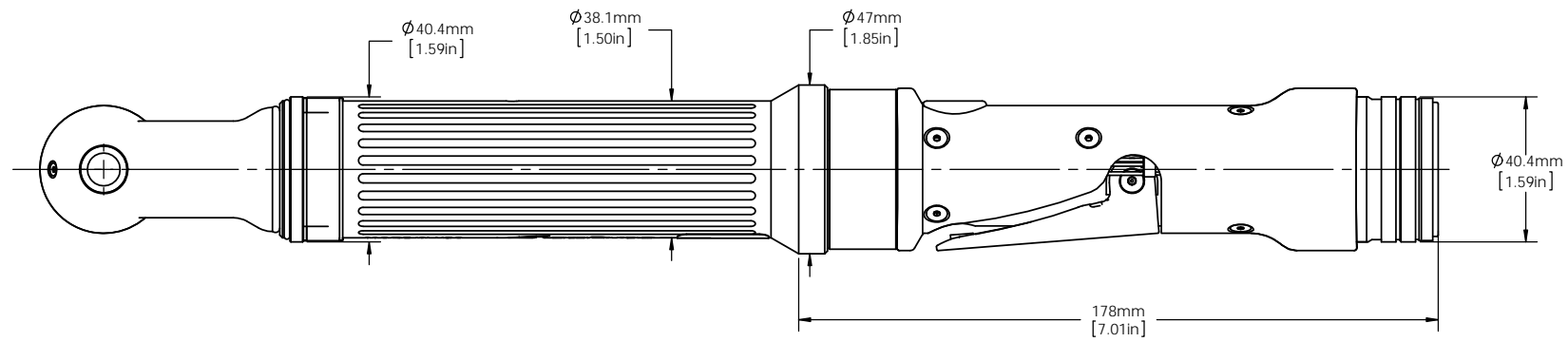
UNLESS OTHERWISE SPECIFIED, DIMENSIONS ARE IN INCHES
 DIMENSIONS AND TOLERANCING PER ANSI Y14.5
 SURFACE ROUGHNESS PER ANSI Y14.36

BLOCK TOLERANCING PER DECIMAL:
 .X = ±.030 .XX = ±.010 .XXX = ±.005 .XXXX = ±.0005
 ANGLE = ±0° 30'

REMOVE BURRS AND SHARP EDGES: R.015 MAX
 MACHINE SURFACE FINISH: 125 RMS OR BETTER

DRAWINGS AND TECHNICAL DOCUMENTS CONTROLLED BY:
ACRADYNE MECHANICAL ENGINEERING

AEN320__C ANGLE NUTRUNNER 2000 SERIES - GEN 3C		
SIZE D	PART / DRAWING NUMBER AEN320__C	REVISION C
SCALE 1:1	DO NOT SCALE DRAWING	SHEET 1 OF 2



MODEL NO.	OVERALL LENGTH	'A'	'B'	'C'	'D'	'E'	SQUARE DRIVE
AEN32015C	14.61	.52	2.13	1.37	.90	1.00	.38
AEN32025C	14.61	.52	2.13	1.37	.90	1.00	.38
AEN32030C	14.42	.70	1.93	1.55	1.06	1.06	.38
AEN32040C	14.42	.70	1.93	1.55	1.06	1.06	.38



DOCUMENT CONTROL
 PRINTED COPIES OF THIS DOCUMENT ARE CONSIDERED TO BE UNCONTROLLED DOCUMENTS. HOLDERS ARE RESPONSIBLE FOR VERIFYING THE CURRENT REVISION LEVEL WITH PURCHASING OR ENGINEERING PRIOR TO USE OR FABRICATION. THE CONTROLLED VERSION OF THIS DOCUMENT IS ELECTRONICALLY MAINTAINED.

PROPRIETARY AND CONFIDENTIAL
 THIS DRAWING CONTAINS INFORMATION STRICTLY CONFIDENTIAL TO ACRADYNE/AIMCO. IN THE ABSENCE OF EXPRESSED WRITTEN PERMISSION, ACRADYNE/AIMCO HAS LOANED THIS COPY WITH THE MUTUAL UNDERSTANDING THAT (A) IT WILL NOT BE USED FOR ANY PURPOSE OTHER THAN FOR THAT IN WHICH IT WAS PROVIDED, (B) THE DATA CONTAINED HEREIN WILL NOT BE DISCLOSED TO OTHERS, (C) IT WILL NOT BE REPRODUCED, AND (D) IT WILL BE RETURNED TO ACRADYNE/AIMCO IMMEDIATELY UPON DEMAND.

REVISION LEVEL	REVISION RELEASE DATE	DESCRIPTION OF CHANGES MADE TO PART	ECN #	AUTHOR/ APPROVAL

UNLESS OTHERWISE SPECIFIED, DIMENSIONS ARE IN INCHES
 DIMENSIONS AND TOLERANCING PER ANSI Y14.5
 SURFACE ROUGHNESS PER ANSI Y14.36

BLOCK TOLERANCING PER DECIMAL:
 .X = ±.030 .XX = ±.010 .XXX = ±.005 .XXXX = ±.0005
 ANGLE = ±0° 30'

REMOVE BURRS AND SHARP EDGES: R.015 MAX
 MACHINE SURFACE FINISH: 125 RMS OR BETTER

DRAWINGS AND TECHNICAL DOCUMENTS CONTROLLED BY:
ACRADYNE MECHANICAL ENGINEERING

AEN320_C ANGLE NUTRUNNER
 TOOL OUTLINE
 2000 SERIES - GEN 3C

SIZE	PART / DRAWING NUMBER	REVISION
D	AEN320_C	C