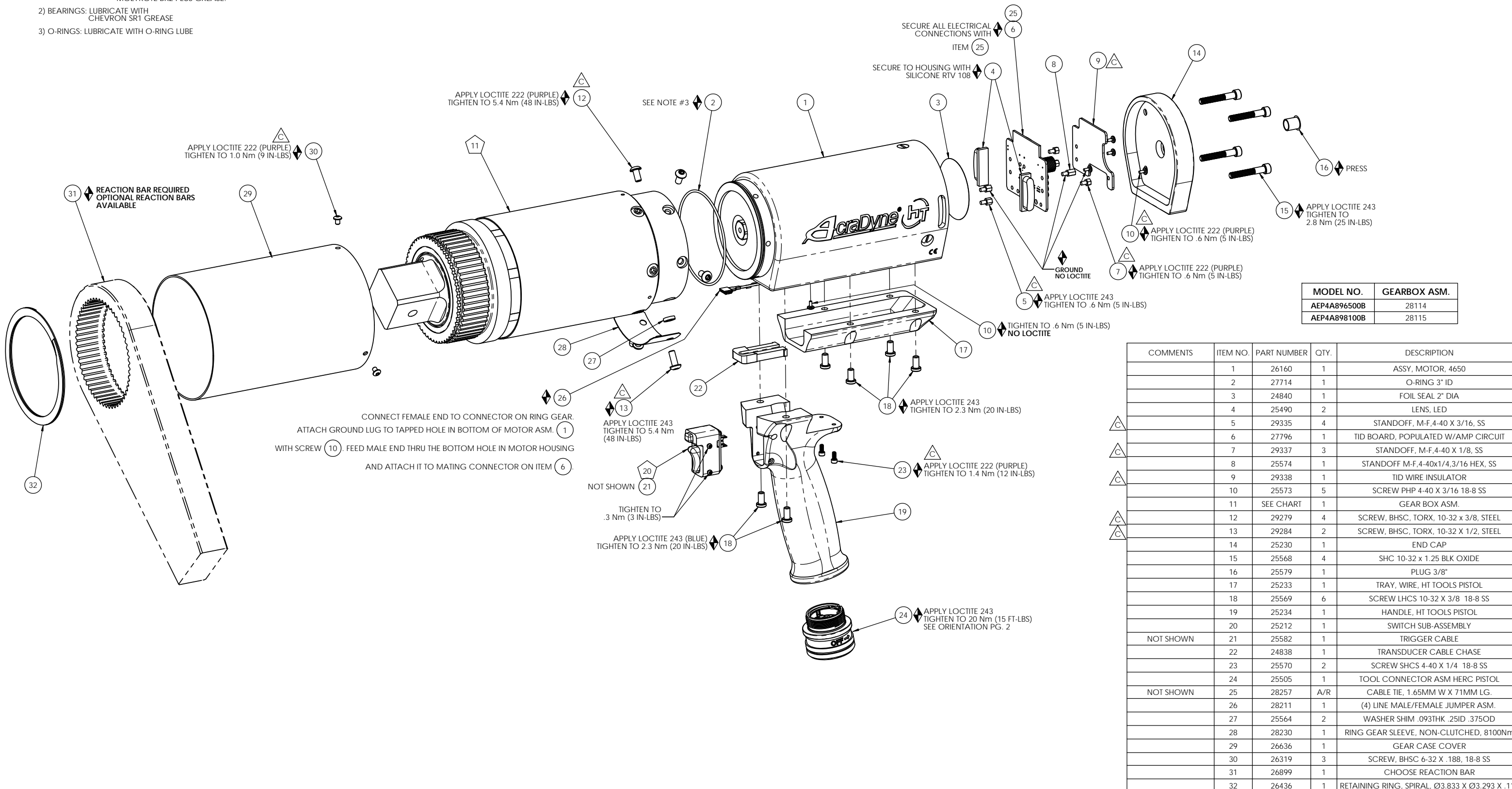


◆ ASSEMBLY INSTRUCTIONS

◻ SUB-ASSEMBLY

- 1) GEARS & SPLINES: LUBRICATE WITH DOW CORNING MOLYKOTE BR2 PLUS GREASE.
- 2) BEARINGS: LUBRICATE WITH CHEVRON SR1 GREASE
- 3) O-RINGS: LUBRICATE WITH O-RING LUBE



MODEL NO.	GEARBOX ASM.
AEP4A896500B	28114
AEP4A898100B	28115

COMMENTS	ITEM NO.	PART NUMBER	QTY.	DESCRIPTION
	1	26160	1	ASSY, MOTOR, 4650
	2	27714	1	O-RING 3" ID
	3	24840	1	FOIL SEAL 2" DIA
	4	25490	2	LENS, LED
△	5	29335	4	STANDOFF, M-F, 4-40 X 3/16, SS
△	6	27796	1	TID BOARD, POPULATED W/AMP CIRCUIT
△	7	29337	3	STANDOFF, M-F, 4-40 X 1/8, SS
△	8	25574	1	STANDOFF M-F, 4-40x1/4, 3/16 HEX, SS
△	9	29338	1	TID WIRE INSULATOR
△	10	25573	5	SCREW PHP 4-40 X 3/16 18-8 SS
△	11	SEE CHART	1	GEAR BOX ASM.
△	12	29279	4	SCREW, BHSC, TORX, 10-32 x 3/8, STEEL
△	13	29284	2	SCREW, BHSC, TORX, 10-32 X 1/2, STEEL
	14	25230	1	END CAP
	15	25568	4	SHC 10-32 x 1.25 BLK OXIDE
	16	25579	1	PLUG 3/8"
	17	25233	1	TRAY, WIRE, HT TOOLS PISTOL
	18	25569	6	SCREW LHCS 10-32 X 3/8 18-8 SS
	19	25234	1	HANDLE, HT TOOLS PISTOL
	20	25212	1	SWITCH SUB-ASSEMBLY
	NOT SHOWN	21	25582	1 TRIGGER CABLE
	22	24838	1	TRANSDUCER CABLE CHASE
	23	25570	2	SCREW SHCS 4-40 X 1/4 18-8 SS
	24	25505	1	TOOL CONNECTOR ASM HERC PISTOL
	NOT SHOWN	25	28257	A/R CABLE TIE, 1.65MM W X 71MM LG.
	26	28211	1	(4) LINE MALE/FEMALE JUMPER ASM.
	27	25564	2	WASHER SHIM .093THK .25ID .375OD
	28	28230	1	RING GEAR SLEEVE, NON-CLUTCHED, 8100Nm
	29	26636	1	GEAR CASE COVER
	30	26319	3	SCREW, BHSC 6-32 X .188, 18-8 SS
	31	26899	1	CHOOSE REACTION BAR
	32	26436	1	RETAINING RING, SPIRAL, Ø3.833 X Ø3.293 X .111



DOCUMENT CONTROL
 PRINTED COPIES OF THIS DOCUMENT ARE CONSIDERED TO BE UNCONTROLLED DOCUMENTS. HOLDERS ARE RESPONSIBLE FOR VERIFYING THE CURRENT REVISION LEVEL WITH PURCHASING OR ENGINEERING PRIOR TO USE OR FABRICATION. THE CONTROLLED VERSION OF THIS DOCUMENT IS ELECTRONICALLY MAINTAINED.

PROPRIETARY AND CONFIDENTIAL
 THIS DRAWING CONTAINS INFORMATION STRICTLY CONFIDENTIAL TO ACRADYNE/AIMCO. IN THE ABSENCE OF EXPRESSED WRITTEN PERMISSION, ACRADYNE/AIMCO HAS LOANED THIS COPY WITH THE MUTUAL UNDERSTANDING THAT (A) IT WILL NOT BE USED FOR ANY PURPOSE OTHER THAN FOR THAT IN WHICH IT WAS PROVIDED, (B) THE DATA CONTAINED HEREIN WILL NOT BE DISCLOSED TO OTHERS, (C) IT WILL NOT BE REPRODUCED, AND (D) IT WILL BE RETURNED TO ACRADYNE/AIMCO IMMEDIATELY UPON DEMAND.

UNLESS OTHERWISE SPECIFIED, DIMENSIONS ARE IN INCHES
 DIMENSIONS AND TOLERANCING PER ANSI Y14.5
 SURFACE ROUGHNESS PER ANSI Y14.36

BLOCK TOLERANCING PER DECIMAL:
 .X = ±.030 .XX = ±.010 .XXX = ±.005 .XXXX = ±.0005
 ANGLE = ±0°30'

REMOVE BURRS AND SHARP EDGES: R.015 MAX
 MACHINE SURFACE FINISH: 125 RMS OR BETTER

DRAWINGS AND TECHNICAL DOCUMENTS CONTROLLED BY:
ACRADYNE MECHANICAL ENGINEERING

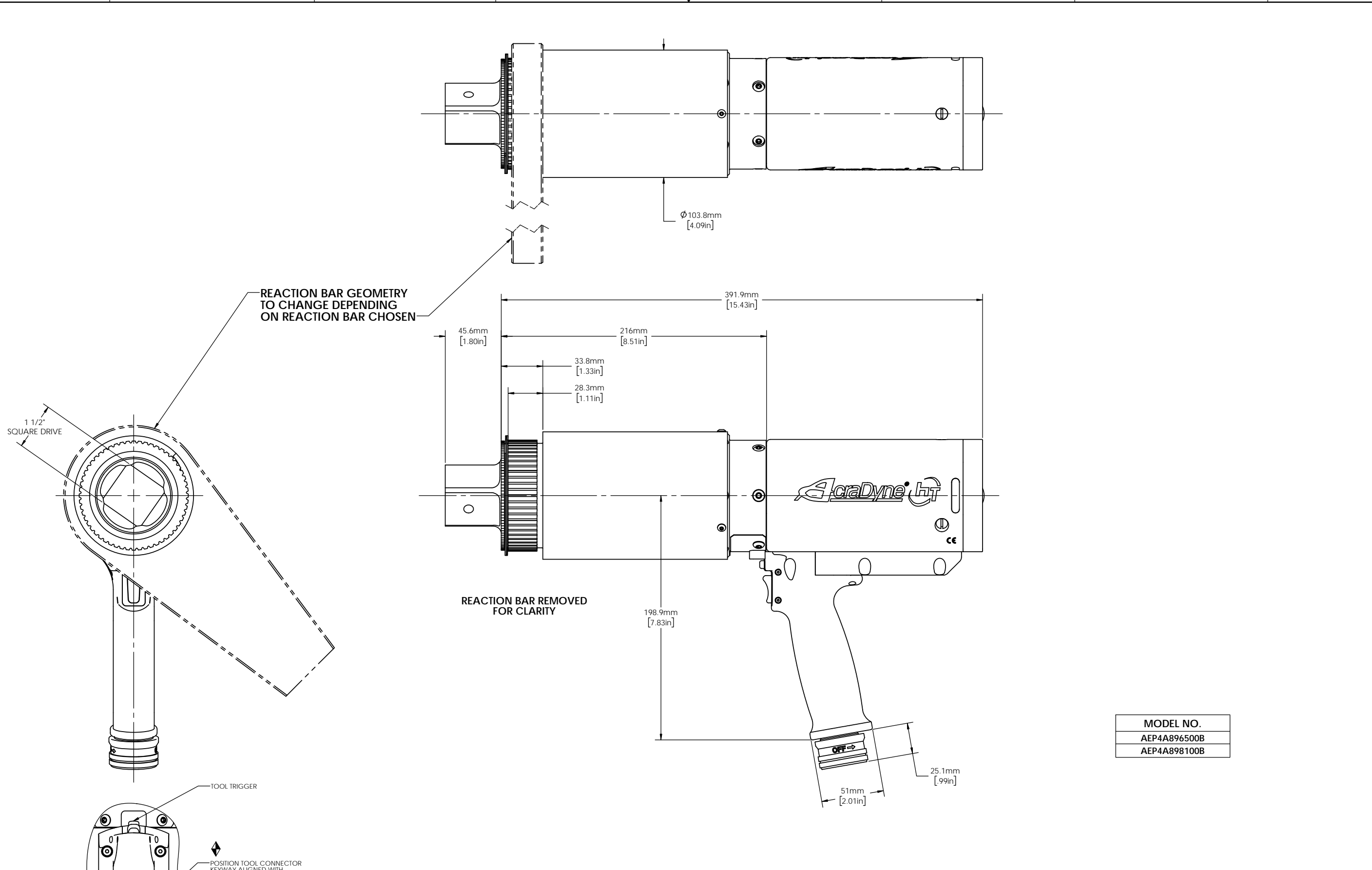
AEP4A89__B
PISTOL NUTRUNNER
8000 SERIES

SIZE	PART / DRAWING NUMBER	REVISION
D	AEP4A89__B	C

SCALE: 2:3 DO NOT SCALE DRAWING SHEET 1 OF 2

REVISION BLOCK

8 7 6 5 4 3 2 1



REACTION BAR GEOMETRY TO CHANGE DEPENDING ON REACTION BAR CHOSEN

1 1/2" SQUARE DRIVE

REACTION BAR REMOVED FOR CLARITY

TOOL TRIGGER

POSITION TOOL CONNECTOR KEYWAY ALIGNED WITH TOOL TRIGGER AS SHOWN

MODEL NO.
AEP4A896500B
AEP4A898100B

AIMCO
AcraDyne
10000 SE PINE STREET
PORTLAND, OREGON 97216
503.254.6600

DOCUMENT CONTROL
PRINTED COPIES OF THIS DOCUMENT ARE CONSIDERED TO BE UNCONTROLLED DOCUMENTS. HOLDERS ARE RESPONSIBLE FOR VERIFYING THE CURRENT REVISION LEVEL WITH PURCHASING OR ENGINEERING PRIOR TO USE OR FABRICATION. THE CONTROLLED VERSION OF THIS DOCUMENT IS ELECTRONICALLY MAINTAINED.

PROPRIETARY AND CONFIDENTIAL
THIS DRAWING CONTAINS INFORMATION STRICTLY CONFIDENTIAL TO ACRADYNE/AIMCO. IN THE ABSENCE OF EXPRESSED WRITTEN PERMISSION, ACRADYNE/AIMCO HAS LOANED THIS COPY WITH THE MUTUAL UNDERSTANDING THAT (A) IT WILL NOT BE USED FOR ANY PURPOSE OTHER THAN FOR THAT IN WHICH IT WAS PROVIDED, (B) THE DATA CONTAINED HEREIN WILL NOT BE DISCLOSED TO OTHERS, (C) IT WILL NOT BE REPRODUCED, AND (D) IT WILL BE RETURNED TO ACRADYNE/AIMCO IMMEDIATELY UPON DEMAND.

REVISION BLOCK		
----------------	--	--

UNLESS OTHERWISE SPECIFIED, DIMENSIONS ARE IN INCHES
DIMENSIONS AND TOLERANCING PER ANSI Y14.5
SURFACE ROUGHNESS PER ANSI Y14.36

BLOCK TOLERANCING PER DECIMAL:
.X = ±.030 .XX = ±.010 .XXX = ±.005 .XXXX = ±.0005
ANGLE = ±0° 30'

REMOVE BURRS AND SHARP EDGES: R.015 MAX
MACHINE SURFACE FINISH: 125 RMS OR BETTER

DRAWINGS AND TECHNICAL DOCUMENTS CONTROLLED BY:
ACRADYNE MECHANICAL ENGINEERING

PISTOL NUTRUNNER 8000 SERIES		
SIZE	PART / DRAWING NUMBER	REVISION
D	AEP4A89_ _ _ B	C
SCALE: 2:3	DO NOT SCALE DRAWING	SHEET 2 OF 2

8 7 6 5 4 3 2 1