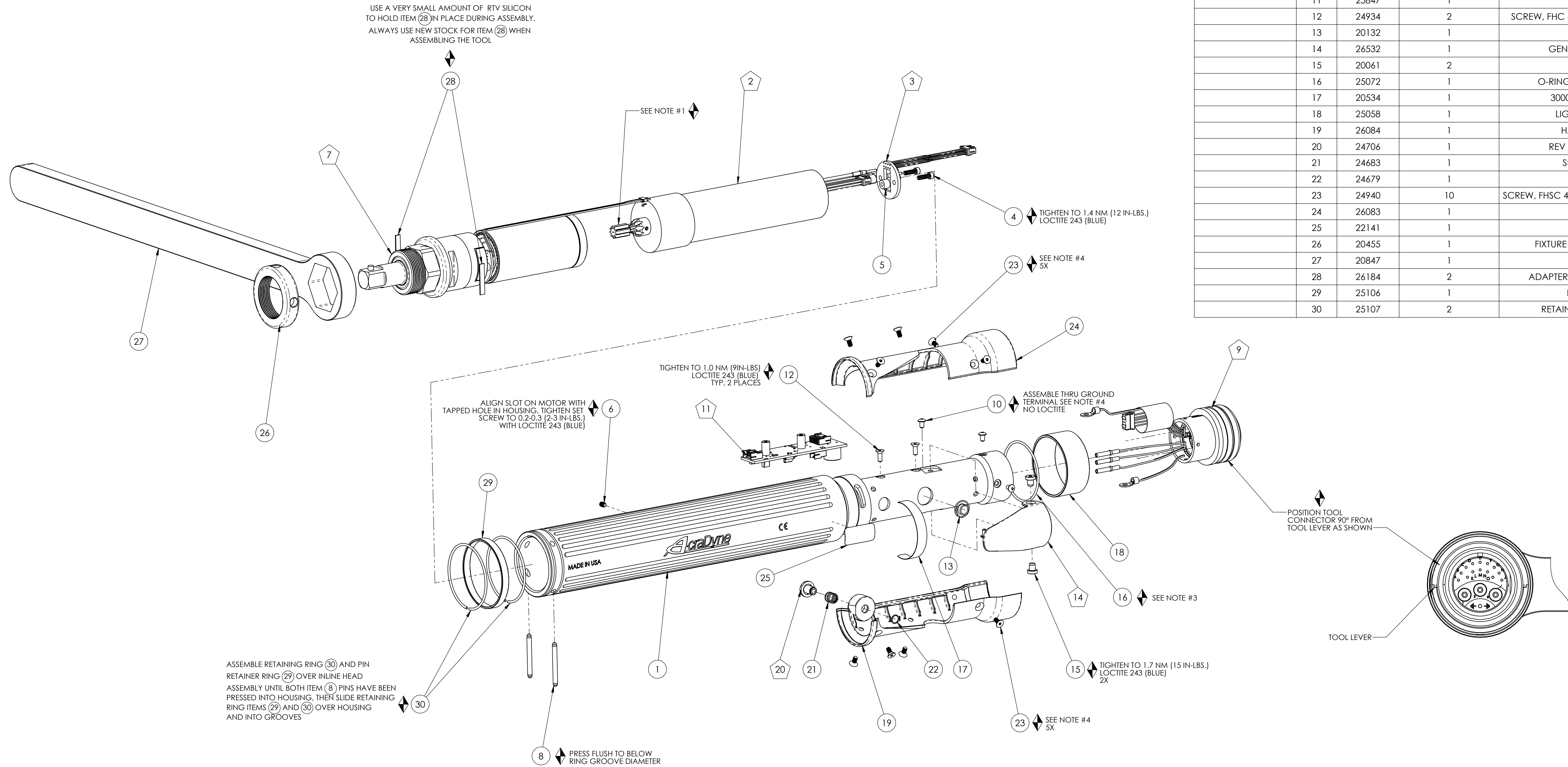


MODEL NO.	OUTPUT ASSY
AES33040CV	25839
AES33060CV	25840

COMMENTS	ITEM NO.	PART NUMBER	Motor_exploded/QTY.	DESCRIPTION
	1	27031	1	MOTOR HOUSING ASSEMBLY
	2	25525	1	MOTOR ASSY, 9T, 3000 SERIES
	3	25063	1	LED BOARD ASM.
	4	25075	2	SCREW, SHC 4-40X.375, STEEL, BLACK OXIDE
	5	25430	2	STAND-OFF, LED, 3000 SERIES
	6	27027	1	SCREW, SET 5-40X.188,STEEL,BLK OXIDE
	7	SEE CHART	1	INLINE GEAR TRAIN, 1/2" DR., (20.74:1)
	8	26793	2	RETAINING PIN, .125 OD X 1-1/4
	9	26102	1	TOOL CONNECTOR ASM., LEVER
	10	25745	5	SCREW, BHC 4-40X.188, STEEL, BLACK OXIDE
	11	25847	1	TID BOARD ASM.
	12	24934	2	SCREW, FHC 4-40 X .312, STEEL, BLACK OXIDE
	13	20132	1	THROTTLE SPRING
	14	26532	1	GEN 3 TRIGGER ASSY, CAST
	15	20061	2	SCREW, LEVER
	16	25072	1	O-RING, LED LIGHT RING COVER
	17	20534	1	3000 SERIAL/MODEL LABEL
	18	25058	1	LIGHT RING COVER, LED
	19	26084	1	HANDLE COVER, MFB
	20	24706	1	REV BUTTON SUB-ASSEMBLY
	21	24683	1	SPRING, REV BUTTON
	22	24679	1	RETAINING RNG
	23	24940	10	SCREW, FHSC 4-40 X .25 LG., STEEL, BLACK OXIDE
	24	26083	1	HANDLE COVER
	25	22141	1	SAFETY LABEL
	26	20455	1	FIXTURE NUT, INLINE --- 3000 SERIES
	27	20847	1	REACTION BAR
	28	26184	2	ADAPTER INSERT, GEN 3B 3000 SERIES
	29	25106	1	PIN RETAINER RING
	30	25107	2	RETAINING RING, PIN RETAINER



- ◆ ASSEMBLY INSTRUCTIONS
- ◇ SUB-ASSEMBLY

- 1) GEARS & SPLINES: LUBRICATE WITH DOW CORNING MOLYKOTE BR2 PLUS GREASE.
- 2) BEARINGS: LUBRICATE WITH CHEVRON SR1 GREASE
- 3) O-RINGS: LUBRICATE WITH O-RING LUBE
- 4) TIGHTEN TO 1 NM (9IN-LBS.) LOCTITE 243 (BLUE)

REQUIRED TOOLING
LOCTITE 243 (BLUE)
1/16" HEX WRENCH
5/64 HEX WRENCH
3/32 HEX WRENCH
SNAP RING PLIERS



DOCUMENT CONTROL
 PRINTED COPIES OF THIS DOCUMENT ARE CONSIDERED TO BE UNCONTROLLED DOCUMENTS. HOLDERS ARE RESPONSIBLE FOR VERIFYING THE CURRENT REVISION LEVEL WITH PURCHASING OR ENGINEERING PRIOR TO USE OR FABRICATION. THE CONTROLLED VERSION OF THIS DOCUMENT IS ELECTRONICALLY MAINTAINED.

PROPRIETARY AND CONFIDENTIAL
 THIS DRAWING CONTAINS INFORMATION STRICTLY CONFIDENTIAL TO ACRADYNE/AIMCO. IN THE ABSENCE OF EXPRESSED WRITTEN PERMISSION, ACRADYNE/AIMCO HAS LOANED THIS COPY WITH THE MUTUAL UNDERSTANDING THAT (A) IT WILL NOT BE USED FOR ANY PURPOSE OTHER THAN FOR THAT IN WHICH IT WAS PROVIDED, (B) THE DATA CONTAINED HEREIN WILL NOT BE DISCLOSED TO OTHERS, (C) IT WILL NOT BE REPRODUCED, AND (D) IT WILL BE RETURNED TO ACRADYNE/AIMCO IMMEDIATELY UPON DEMAND.

REVISION LEVEL	REVISION RELEASE DATE	DESCRIPTION OF CHANGES MADE TO PART	ECN #	AUTHOR/ APPROVAL
REVISION BLOCK				

UNLESS OTHERWISE SPECIFIED, DIMENSIONS ARE IN INCHES
 DIMENSIONS AND TOLERANCING PER ANSI Y14.5
 SURFACE ROUGHNESS PER ANSI Y14.36

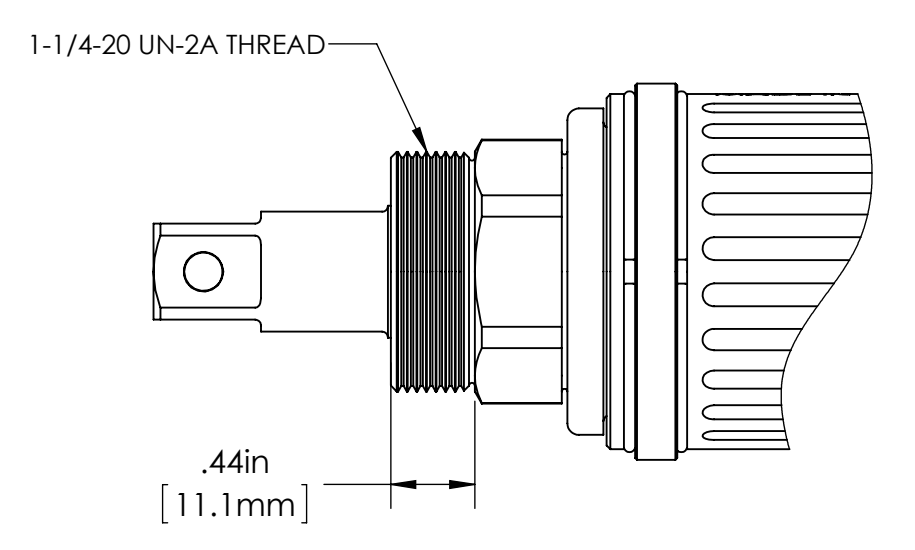
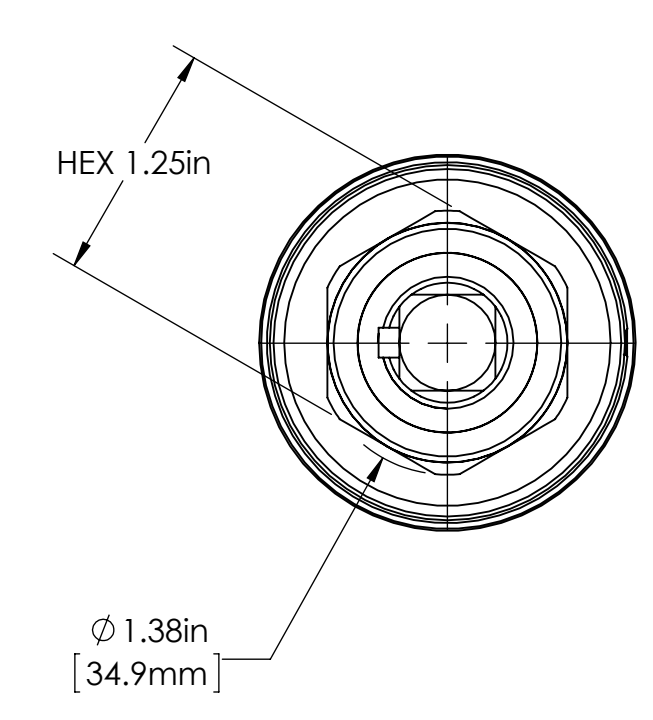
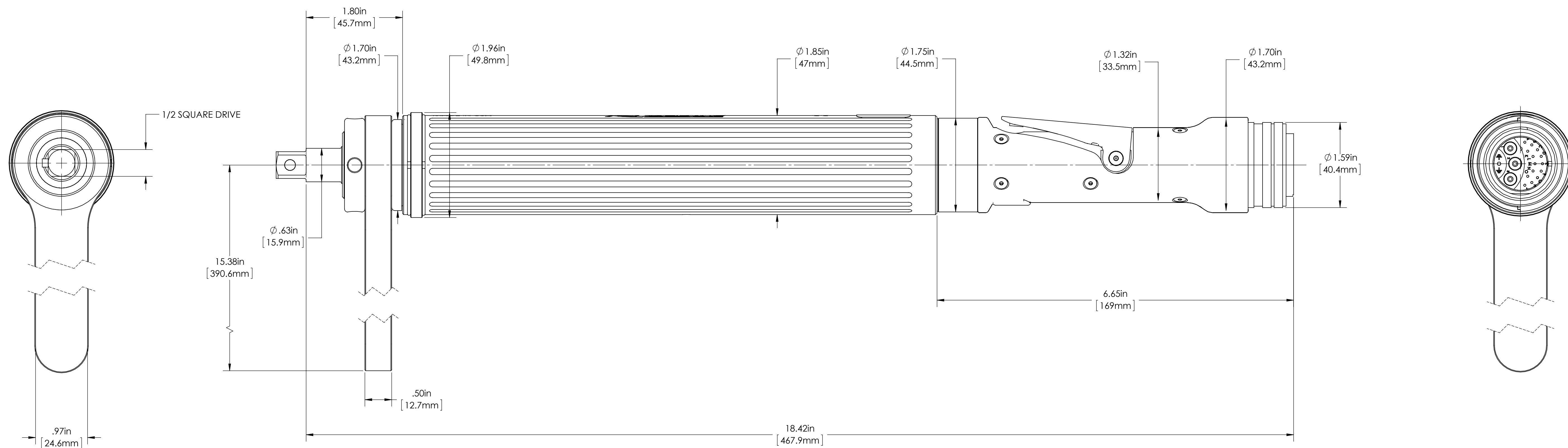
BLOCK TOLERANCING PER DECIMAL:
 .X = ±.030 .XX = ±.010 .XXX = ±.005 .XXXX = ±.0005
 ANGLE = ±0° 30'

REMOVE BURRS AND SHARP EDGES: R.015 MAX
 MACHINE SURFACE FINISH: 125 RMS OR BETTER

DRAWINGS AND TECHNICAL DOCUMENTS CONTROLLED BY:
ACRADYNE MECHANICAL ENGINEERING

AES330 CV INLINE NUTRUNNER
3000 SERIES - GEN 3C

SIZE	PART / DRAWING NUMBER	REVISION
D	AES330 CV	A
SCALE: 2:3	DO NOT SCALE DRAWING	SHEET 1 OF 2



REACTION BAR HEX AND THREAD DETAIL VIEW



DOCUMENT CONTROL
PRINTED COPIES OF THIS DOCUMENT ARE CONSIDERED TO BE UNCONTROLLED DOCUMENTS. HOLDERS ARE RESPONSIBLE FOR VERIFYING THE CURRENT REVISION LEVEL WITH PURCHASING OR ENGINEERING PRIOR TO USE OR FABRICATION. THE CONTROLLED VERSION OF THIS DOCUMENT IS ELECTRONICALLY MAINTAINED.

PROPRIETARY AND CONFIDENTIAL
THIS DRAWING CONTAINS INFORMATION STRICTLY CONFIDENTIAL TO ACRADYNE/AIMCO. IN THE ABSENCE OF EXPRESSED WRITTEN PERMISSION, ACRADYNE/AIMCO HAS LOANED THIS COPY WITH THE MUTUAL UNDERSTANDING THAT (A) IT WILL NOT BE USED FOR ANY PURPOSE OTHER THAN FOR THAT IN WHICH IT WAS PROVIDED, (B) THE DATA CONTAINED HEREIN WILL NOT BE DISCLOSED TO OTHERS, (C) IT WILL NOT BE REPRODUCED, AND (D) IT WILL BE RETURNED TO ACRADYNE/AIMCO IMMEDIATELY UPON DEMAND.

REVISION LEVEL	REVISION RELEASE DATE	DESCRIPTION OF CHANGES MADE TO PART	ECN #	AUTHOR/ APPROVAL
REVISION BLOCK				

UNLESS OTHERWISE SPECIFIED, DIMENSIONS ARE IN INCHES
DIMENSIONS AND TOLERANCING PER ANSI Y14.5
SURFACE ROUGHNESS PER ANSI Y14.36

BLOCK TOLERANCING PER DECIMAL:
X = ±.030 XX = ±.010 XXX = ±.005 XXXX = ±.0005
ANGLE = ±0° 30'

REMOVE BURRS AND SHARP EDGES: R.015 MAX
MACHINE SURFACE FINISH: 125 RMS OR BETTER

DRAWINGS AND TECHNICAL DOCUMENTS CONTROLLED BY:
ACRADYNE MECHANICAL ENGINEERING

AES33_ _ CV INLINE NUTRUNNER 3000 SERIES - GEN 3C		
SIZE D	PART / DRAWING NUMBER AES330_ CV	REVISION A
SCALE 1:1	DO NOT SCALE DRAWING	SHEET 2 OF 2