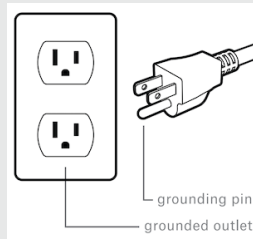


Step 1: Make Connections

- A. Connect the tool cable to the Gen IV Controller. AcraDyne recommends not exceeding 20m length of cable.



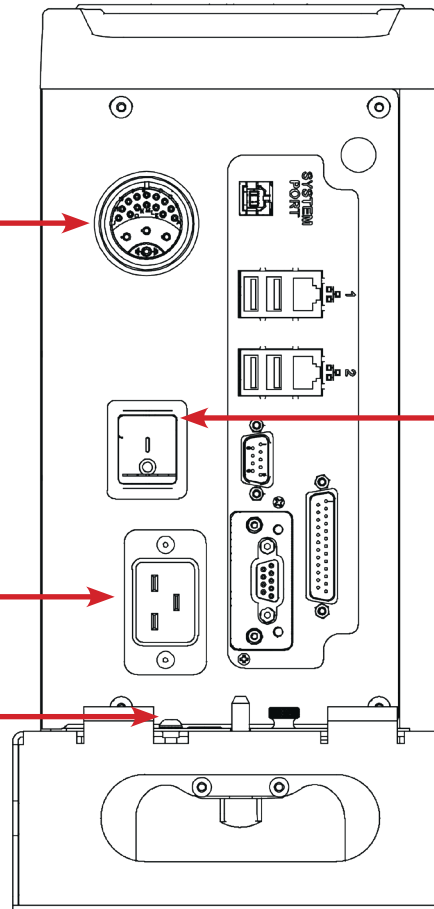
- B. Connect the power cord.



- C. Connect the Redundant Earth ground (required).

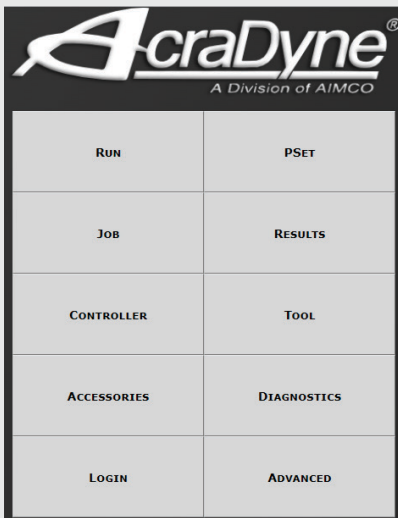


Consult manual for further details on proper grounding of controller if needed.

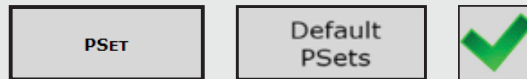


Step 2: Power on the Controller

Step 3: Import Default PSets



On the Controller's Main Display Menu press



This will import three default PSets that can now be edited. More PSets can be added by using the Add and Edit buttons.



Note: When connecting through the web browser interface, this process is the same. Refer to the Gen IV controller manual for connection instructions. For the complete Gen IV manual go to www.aimco-global.com/manuals.



AIMCO Technical Support Call Guide

Service/Repair		
Service Training	Hunter Bowen Direct: (503) 262-3425 (503) 254-6600, ext. 351 (800) 852-1368, ext. 351	Bill Kearney Direct: (503) 262-3447 (503) 254-6600, ext. 147 (800) 852-1368, ext. 147
Service/Repair AcraDyne Tools	Gregg Walters (503) 262-3420 (503) 254-6600, ext. 354 (800) 852-1368, ext. 354	Bill Kearney Direct: (503) 262-3447 (503) 254-6600, ext. 147 (800) 852-1368, ext. 147
Technical Assistance		
AcraDyne Tool Performance and Specifications	Max Smith (615) 566-8751 (503) 254-6600 (800) 852-1368	applications@aimco-global.com
Electronics Performance and Specifications	Luc Kage (205) 753-1645 (503) 254-6600 (800) 852-1368	applications@aimco-global.com
Pneumatic Tool Performance and Specifications	Hunter Bowen Direct: (503) 262-3425 (503) 254-6600, ext. 351 (800) 852-1368, ext. 351	Bill Kearney Direct: (503) 262-3447 (503) 254-6600, ext. 147 (800) 852-1368, ext. 147