



AcraDyne

5000 Series Nutrunners

Operations Manual



PO Box 16460, Portland OR 97292-0460 • 800-852-1368 • Fax 800-582-9015

www.aimco-global.com

Introduction

Thank you for purchasing this AcraDyne DC electric assembly tool, one of the lightest and fastest DC electric assembly tools on the market. When used with the AcraDyne iEC tool controller, this tool will provide excellent productivity, ergonomics, reliability and quality on a wide range of industrial assembly applications.

Safety Information

SAVE THESE INSTRUCTIONS

1) WORK AREA

- a) Keep work area clean and well lit. Cluttered and dark areas invite accidents.
- b) Do not operate power tools in explosive atmospheres, such as the presence of flammable liquids, gases or dust. Power tools create sparks which may ignite the dust or fumes.
- c) Keep children and bystanders away while operating a power tool. Distractions can cause you to lose control.

2) ELECTRICAL SAFETY

- a) Power tool plugs must match the outlet. Never modify the plug in any way. Do not use any adapter plugs with earthed (grounded) power tools. Unmodified plugs and matching outlets will reduce risk of electric shock.
- b) Avoid body contact with earthed or grounded surfaces such as pipes, radiators, ranges and refrigerators. There is an increased risk of electric shock if your body is earthed or grounded.
- c) Do not expose power tools to rain or wet conditions. Water entering a power tool will increase the risk of electric shock.
- d) Do not abuse the cord. Never use the cord for carrying, pulling or unplugging the power tool. Keep cord away from heat, oil, sharp edges or moving parts. Damaged or entangled cords increase the risk of electric shock.
- e) This tool is intended for indoor use only.

3) PERSONAL SAFETY

- a) Stay alert, watch what you are doing and use common sense when operating a power tool. Do not use a power tool while you are tired or under the influence of drugs, alcohol or medication. A moment of inattention while operating power tools may result in serious personal injury.
- b) Use safety equipment. Always wear eye protection. Safety equipment such as dust mask, non-skid safety shoes, hard hat, or hearing protection used for appropriate conditions will reduce personal injuries. If the maximum duty cycle of the attached tool is exceeded or the tool temperature exceeds 50° C., then the operator should wear protective hand wear (gloves).
- c) Avoid accidental starting. Ensure the switch is in the off-position before plugging in. Carrying power tools with your finger on the switch or plugging in power tools that have the switch on invites accidents.
- d) Remove any adjusting key or wrench before turning the power tool on. A wrench or a key left attached to a rotating part of the power tool may result in personal injury.
- e) Do not overreach. Keep proper footing and balance at all times. This enables better control of the power tool in unexpected situations.
- f) Dress properly. Do not wear loose clothing or jewelry. Keep your hair, clothing and gloves away from moving parts. Loose clothes, jewelry or long hair can be caught in moving parts.
- g) If devices are provided for the connection of dust extraction and collection facilities, ensure these are connected and properly used. Use of these devices can reduce dust-related hazards.

4) POWER TOOL USE AND CARE

- a) Do not force the power tool. Use the correct power tool for your application. The correct power tool will do the job better and safer at the rate for which it was designed.
- b) Do not use the power tool if the switch does not turn it on and off. Any power tool that cannot be controlled with the switch is dangerous and must be repaired.
- c) This product is designed to be used in combination with the AcraDyne iEC DC tool controller for intermittent hand-held or fixtured assembly processes.

OPERATION



1. Connect tool cable to the iEC controller and the tool:

The tool cable has curved alignment tabs and slots built into the connectors at each end to ensure proper alignment and connection with the tool and controller.

Make sure that power is not turned on at the controller before making any connections. Align the female connector on the cable with the male connector on the tool and insert the cable onto the tool, then slide the connector nut onto the threads on the cable and turn clockwise until hand-tight.

Align the male connector tab on the other end of the tool cable with the female slot on the controller and insert the cable into the connector, then slide the metal outer cover onto the connection threads on the controller and turn clockwise until hand-tight.

2. Multifunction Button Operation:

The tool will flash all LED lights three times when power is first turned on at the controller. After the controller finishes initializing and displays a target torque value, the multifunction button (MFB) is used to toggle the tool from clockwise mode (FWD) to counter-clockwise operation mode (REV). The MFB is the small button opposite the trigger.

The tool will initially start in clockwise mode and will have no LED lights turned on. If the trigger is pressed, the tool will turn on the blue LED meaning the tightening operation is

underway. Pressing the MFB will cause the tool to flash yellow and red LED lights. Pressing the MFB again will switch the tool back FWD mode and will indicate this with no LED lights turned on.

3. Start Lever Operation:

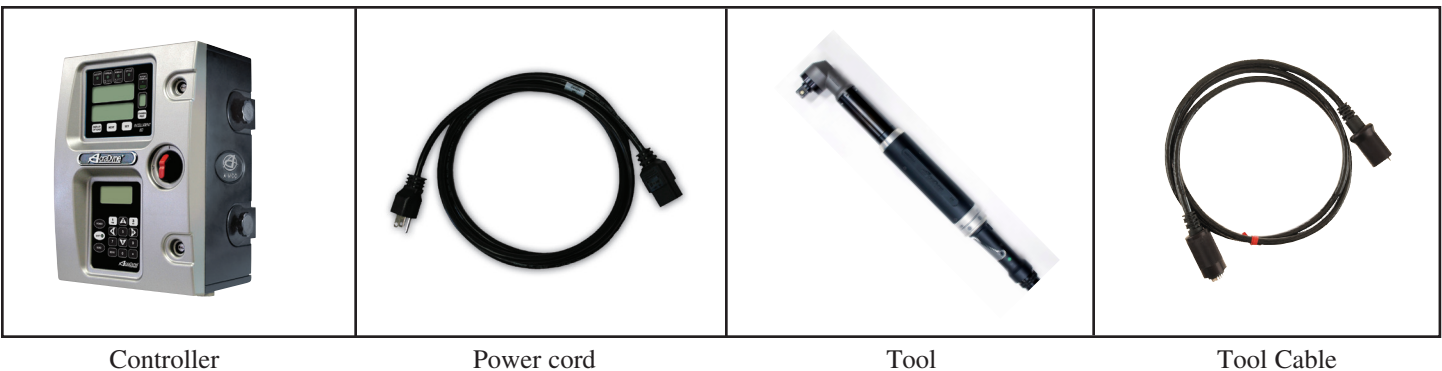
To start the tool, depress the start lever. Blue LED lights will be displayed while tightening a bolt. The tool will stop automatically when it senses its target torque value or if no torque is sensed in a specified time period. After a cycle is complete, the tool will display green LED lights for a success, or red LED lights for failure to reach torque/angle.

Light Ring Light Assignment

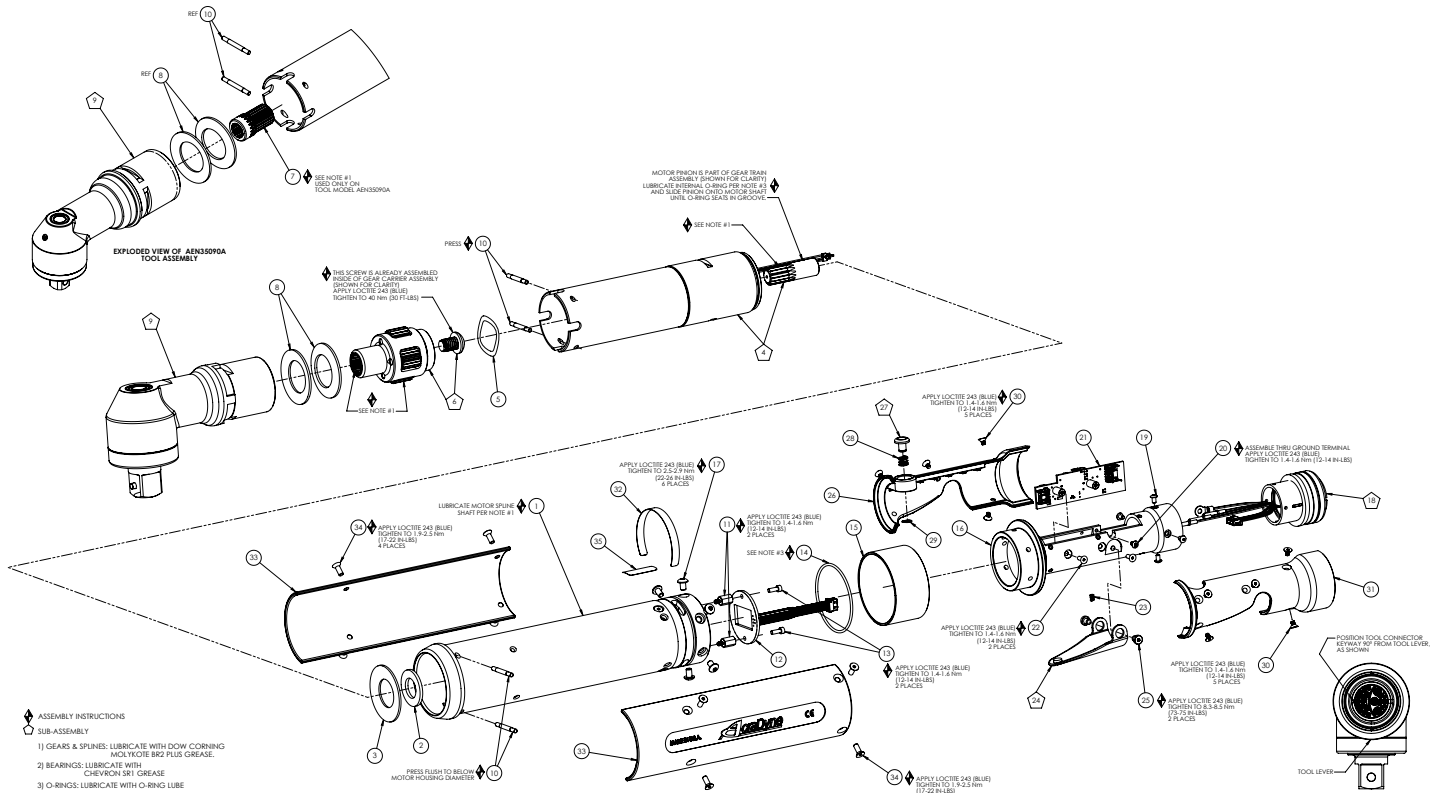
The Buzzer and Multi-Function Button are programmable in the DSP Menu of ToolWare.

Light Color	Meaning
Green Solid	OK
Red Flashing	Torque Low
Red Solid	Torque High
Yellow Flashing	Angle Low
Yellow Solid	Angle High
Blue Solid	Tool In-Cycle/Tool Armed
Blue Flashing	P-Set Change thru MFB
All On Flashing	Tool in Disassembly
Buzzer	Bad Assembly/Tool in Disassembly/Power Up

A complete tool system consists of the following items:



5000 SERIES ANGLE NUTRUNNERS



ITEM #	PART NUMBER	QTY.	DESCRIPTION
1	26058	1	MOTOR ASM., 5000 SERIES
2	26198	1	THRUST WASHER
3	26074	1	BELLEVILLE WASHER
4	SEE CHART	1	GEAR TRAIN ASM.
5	20912	1	WAVE SPRING --- 3000 SERIES
6	SEE CHART	1	ASSEMBLY, GEAR CARRIER
7	SEE CHART	1	SPLINED SPINDLE SHAFT
8	20911	2	BELLEVILLE WASHER
9	SEE CHART	1	ASSY, RIGHT ANGLE HEAD
10	20913	4	PIN, RETAINING
11	26077	2	M-F THREADED HEX STANDOFF
12	26095	1	LED BOARD ASM.
13	26078	2	SCREW, SHC 4-40X.312, STEEL, BLACK OXIDE
14	26080	1	O-RING, LED LIGHT RING COVER
15	26079	1	LIGHT RING COVER, LED
16	26082	1	LEVER HANDLE
17	26088	6	SCREW, BHC 8-32X.25, STEEL, BLACK OXIDE
18	26102	1	TOOL CONNECTOR ASM., LEVER
19	25745	4	SCREW, BHC 4-40X.188, STEEL, BLACK OXIDE
20	25102	1	SCREW, BHC 4-40X.188, STEEL, BLACK OXIDE
21	25847	1	TID BOARD ASM.
22	24934	2	SCREW, FHC 4-40 X .312, STEEL, BLACK OXIDE
23	25071	1	SPRING, LEVER
24	25074	1	LEVER ASSEMBLY
25	20061	2	SCREW, LEVER
26	26084	1	HANDLE COVER, MFB
27	24706	1	REV BUTTON SUB-ASSEMBLY
28	24683	1	SPRING, REV BUTTON
29	24679	1	RETAINING RNG
30	24938	10	SCREW, FHSC 4-40X.188, STEEL, BLACK OXIDE
31	26083	1	HANDLE COVER
32	20534	1	3000 SERIAL/MODEL LABEL
33	26081	2	MOTOR HOUSING COVER
34	25385	8	SCREW, FHSC 6-32 X .375, STEEL
35	22141	1	SAFETY LABEL

MODEL NO.	GEAR TRAIN ASM.	GEAR CARRIER ASM.	ANGLE HEAD ASM.	SPLINED SPINDLE SHAFT
AEN35090A	26116	20924	26119	26122
AEN35140A	26116	20924	23461	N/A
AEN35175A	26115	26117	23461	N/A
AEN35225A	26114	20924	23468	N/A
AEN35285A	26112	20924	23468	N/A
AEN35350A	26111	26117	23468	N/A

Assembly for: AES35280AV, AES35350AV, AES35420AV, AES35515AV, AES35635AV6

Specifications

Environmental

- Operating Temperature: 0°C to 32°C
- Storage Temperature: 0°C to 65°C
- Humidity:
 - 5% to 90% RH, Non-Condensing, for temperatures 0°C to 40°C
 - 5% to 60% RH, Non-Condensing, for temperatures 0°C to 65°C
- Maximum Altitude of Operation: 3000m
- Maximum decibel level: 77 dB(A)

Electrical

- Motor Type: BLDC
 - Motor Phase Voltage: 160 Volts Pulse DC @ Controller Supply Voltage of 120 RMS, or 320 Volts Pulse DC @ Controller Supply Voltage of 230 RMS
- Duty Cycle: The Nutrunner tools are intended for intermittent operation with recommended maximum duty cycles not to exceed 25%. Note: actual maximum duty cycles are dependant upon several factors including: Ambient Temperature, Tool selection, Joint conditions, Fastening-parameter programming, and different applications and strategies. For optimum duty cycle determination, please contact your AcraDyne sales representative.

Physical

- 6.9 lbs/3.1 kg - 16.1 lbs/7.3 kg

Performance (Series)

- Torque Range: 19 - 635 NM
- Speed Range: 14 - 468.6 RPM

*Notes: Full speed 50% of rated for 5000 series tools @ 120VAC.
5000 series tools must be connected to iEC controllers equipped
with 40A servo drive.*



AIMCO CORPORATE HEADQUARTERS
10000 SE PINE STREET
PORTLAND, OREGON 97216
PHONE: (503) 254-6600
TOLL FREE: 1-800-852-1368

AIMCO CORPORATION DE MEXICO SA DE CV
AVE. CRISTOBAL COLON 14529
CHIHUAHUA, CHIHUAHUA. 31125
MEXICO
PHONE: (01-614) 380-1010
FAX: (01-614) 380-1019

LIT-MAN166 REV. 07/2020
PRINTED IN USA ©2020 AIMCO