



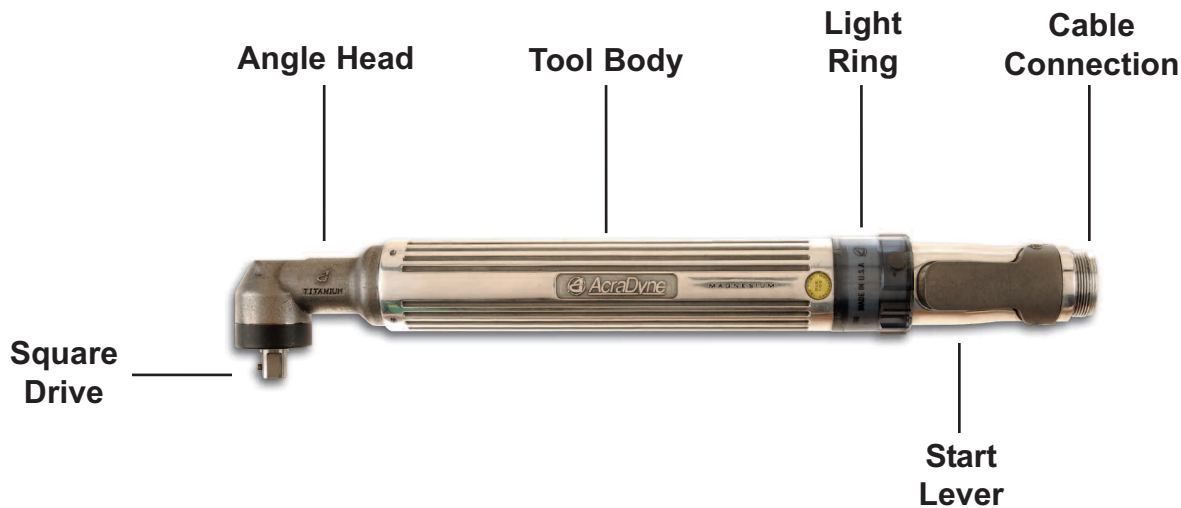
AcraDyne 3000 Series Nutrunners Operations Manual



PO Box 16460, Portland OR 97292-0460 • 800-852-1368 • Fax 800-582-9015

www.aimco-global.com

OPERATIONS



1. Connect the tool cable to the Evolution controller and the tool:

Be sure the female end of the tool cable is connected to the tool and the male end of the tool cable is connected to the controller. When connecting these, you'll see two alignment pins - one on the cable and one on the tool or controller. Just align these two pins 180 degrees apart from each other and insert the alignment pins into the matching holes. Once snug, twist the metal outer casing clockwise until it is tight.

2. Light Ring Operation:

The light ring controls the direction of the tool rotation and can activate an auxiliary control. The ring has three positions - fully clockwise, center and fully counter-clockwise. The factory setting for each position is

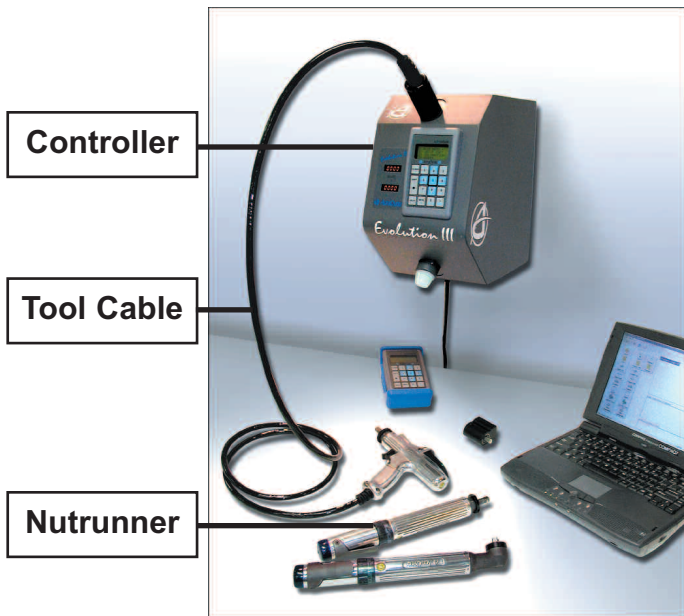
- Clockwise position - forward rotation
- Center position - reverse rotation
- Counter-clockwise position - no rotation

Each position can be programmed individually using AcraDyne Toolware software. The auxiliary setting can be used to advance to the next parameter set or other functions as programmed later.

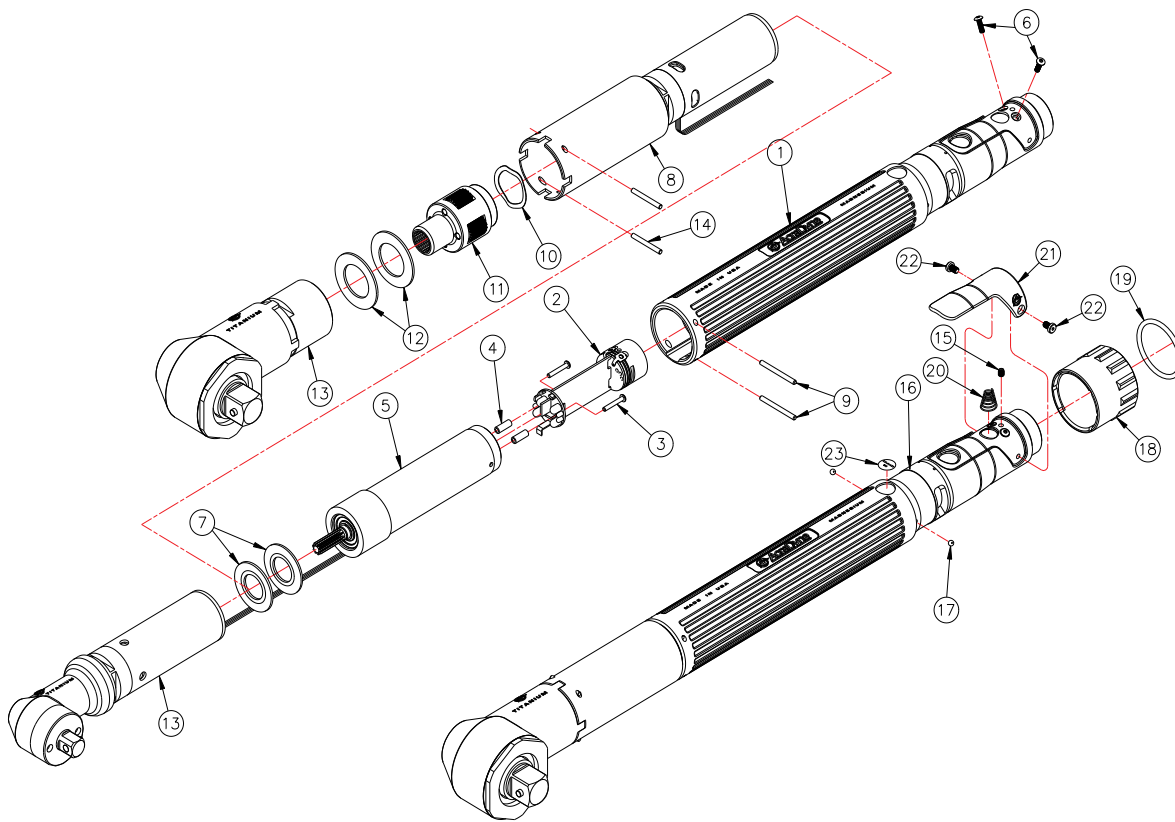
3. Start Lever Operation:

To start the tool, simply depress the lever. The permanently mounted magnet on the underside of the handle will activate the start circuit. When the tool reaches torque, the tool will stop automatically.

A complete tool system consists of the following items:

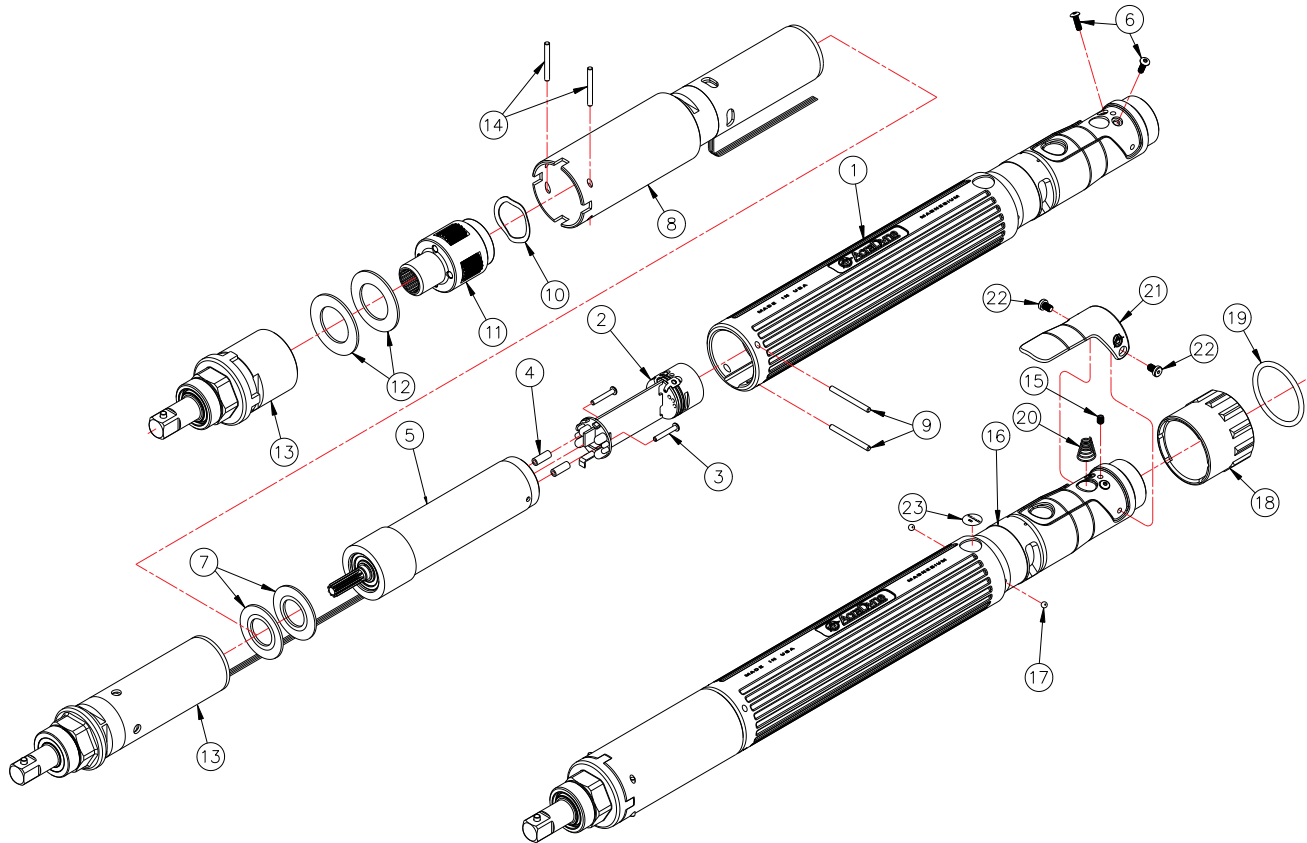


3000 SERIES ANGLE NUTRUNNER - OVERALL ASSEMBLY



Item#	AEN 3120	AEN 3055	AEN 3060	AEN 3090	AEN 3200	AEN 3300	AEN 3450	QTY.	PART #	DESCRIPTION
1	X	X	X	X	X	X	X	1	20008	3000 MOTOR HANDLE HOUSING
2	X	X	X	X	X	X	X	1	20250	3000 ID BOARD ASSEMBLY
3	X	X	X	X	X	X	X	2	20801	SCREW
4	X	X	X	X	X	X	X	2	20802	SPACER
5					X			1	20093	MOTOR ASSY w/ SUN GEAR (P/N 20024)
	X	X	X	X		X	X	1	20089	MOTOR ASSY
6	X	X	X	X	X	X	X	2	20532	SCREW
7	X	X	X	X	X	X	X	2	20058	BELLEVILLE WASHER
8					X			1	21382	GEARTRAIN ASSEMBLY
						X		1	21381	(Only used on AEN3200/3300/3450)
							X	1	20921	
9	X	X	X	X	X	X	X	2	20201	PIN
10					X	X	X	1	20912	WAVE SPRING
11					X	X	X	1	21388	GEAR CARRIER ASSY.—3RD STAGE
12					X	X	X	2	20911	BELLEVILLE WASHER
13		X						1	21342	ANGLE HEAD/GEARCASE ASSEMBLY
			X					1	20147	
				X				1	20148	
								1	20146	
					X	X	X	1	21048	ANGLE HEAD ASSEMBLY—3/4 DRIVE
14					X	X	X	2	20913	PIN
15	X	X	X	X	X	X	X	1	20092	SET SCREW
16	X	X	X	X	X	X	X	1	20534	SERIAL/MODEL LABEL
17	X	X	X	X	X	X	X	2	20105	DETENT BALL
18	X	X	X	X	X	X	X	1	20202	REVERSE/LIGHT RING ASSEMBLY
19	X	X	X	X	X	X	X	1	20005	O-RING
20	X	X	X	X	X	X	X	1	20132	SPRING
21	X	X	X	X	X	X	X	1	20149	THROTTLE LEVER ASSEMBLY
22	X	X	X	X	X	X	X	2	20061	SCREW
23	X	X	X	X	X	X	X	1	20533	CALIBRATION LABEL

3000 SERIES INLINE NUTRUNNER - OVERALL ASSEMBLY



ITEM #	AEM 3040	AEM 3060	AEM 3100	AEM 3150	AEM 3230	QTY.	PART #	DESCRIPTION
1	X	X	X	X	X	1	20008	3000 MOTOR HANDLE HOUSING
2	X	X	X	X	X	1	20250	3000 ID BOARD ASSEMBLY
3	X	X	X	X	X	2	20801	SCREW
4	X	X	X	X	X	2	20802	SPACER
5			X			1	20093	MOTOR ASSY w/ SUN GEAR (P/N 20024)
	X	X		X	X	1	20089	MOTOR ASSY
6	X	X	X	X	X	2	20532	SCREW
7	X	X	X	X	X	2	20058	BELLEVILLE WASHER
8			X			1	21382	GEARTRAIN ASSEMBLY
				X		1	21381	(Only used on AEM3100/3150/3230)
					X	1	20921	
9	X	X	X	X	X	2	20201	PIN
10				X	X	1	20912	WAVE SPRING
11				X	X	1	20924	GEAR CARRIER ASSY.—3RD STAGE
12				X	X	2	20911	BELLEVILLE WASHER
13	X					1	20129	INLINE HEAD ASSEMBLY
		X				1	20128	
			X	X	X	1	20923	INLINE HEAD ASSEMBLY—1/2 DRIVE
14				X	X	2	20913	PIN
15	X	X	X	X	X	1	20092	SET SCREW
16	X	X	X	X	X	1	20534	SERIAL/MODEL LABEL
17	X	X	X	X	X	2	20105	DETENT BALL
18	X	X	X	X	X	1	20202	REVERSE/LIGHT RING ASSEMBLY
19	X	X	X	X	X	1	20005	O-RING
20	X	X	X	X	X	1	20132	SPRING
21	X	X	X	X	X	1	20149	THROTTLE LEVER ASSEMBLY
22	X	X	X	X	X	2	20061	SCREW
23	X	X	X	X	X	1	20533	CALIBRATION LABEL



AIMCO

1204 E. Maple Rd.
Troy, MI 48083

(800) 852-1368
FAX (800) 582-9015

CORPORATE HEADQUARTERS
10000 S.E. Pine St.
Portland, OR 97216

(800) 852-1368
FAX (800) 582-9015

Ave. Morones Prieto 2110 Pte.
Col. Loma Larga
Monterrey, NL CP 64710, Mexico
52-81 1001-1600
FAX 52-81 1001-1630