



# AcraDyne 2000 Series Nutrunners Operations Manual

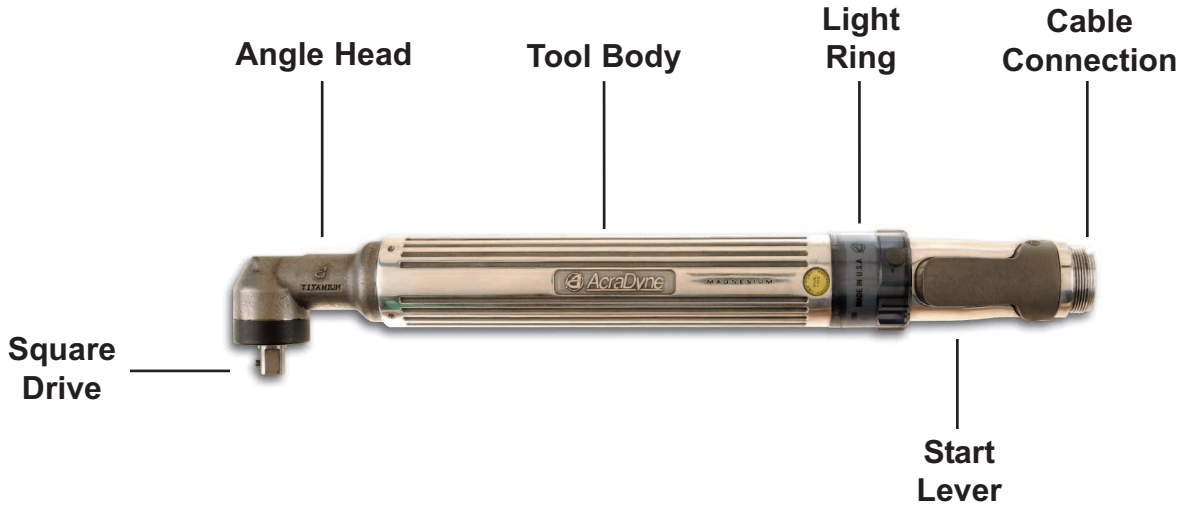


---

PO Box 16460, Portland OR 97292-0460 • 800-852-1368 • Fax 800-582-9015

[www.aimco-global.com](http://www.aimco-global.com)

# OPERATIONS



## 1. Connect the tool cable to the Evolution controller and the tool:

Be sure the female end of the tool cable is connected to the tool and the male end of the tool cable is connected to the controller. When connecting these, you'll see two alignment pins - one on the cable and one on the tool or controller. Just align these two pins 180 degrees apart from each other and insert the alignment pins into the matching holes. Once snug, twist the metal outer casing clockwise until it is tight.

## 2. Light Ring Operation:

The light ring controls the direction of the tool rotation and can activate an auxiliary control. The ring has three positions - fully clockwise, center and fully counter-clockwise. The factory setting for each position is

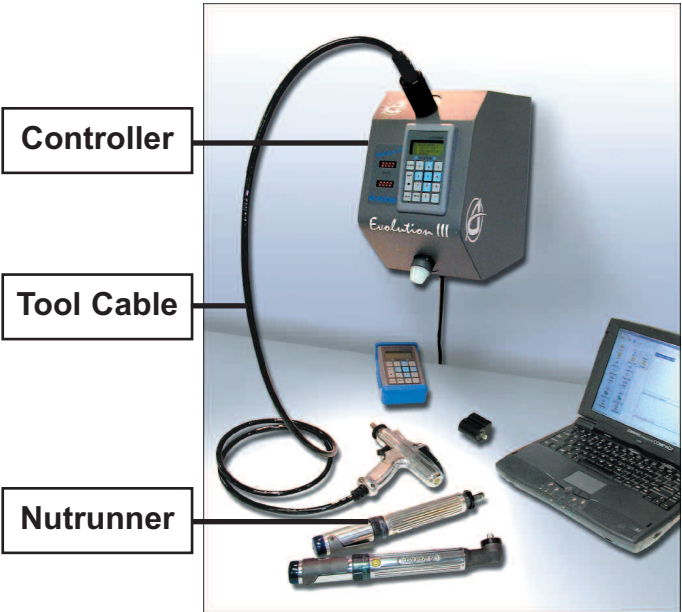
- Clockwise position - forward rotation
- Center position - reverse rotation
- Counter-clockwise position - no rotation

Each position can be programmed individually using AcraDyne Toolware software. The auxiliary setting can be used to advance to the next parameter set or other functions as programmed later.

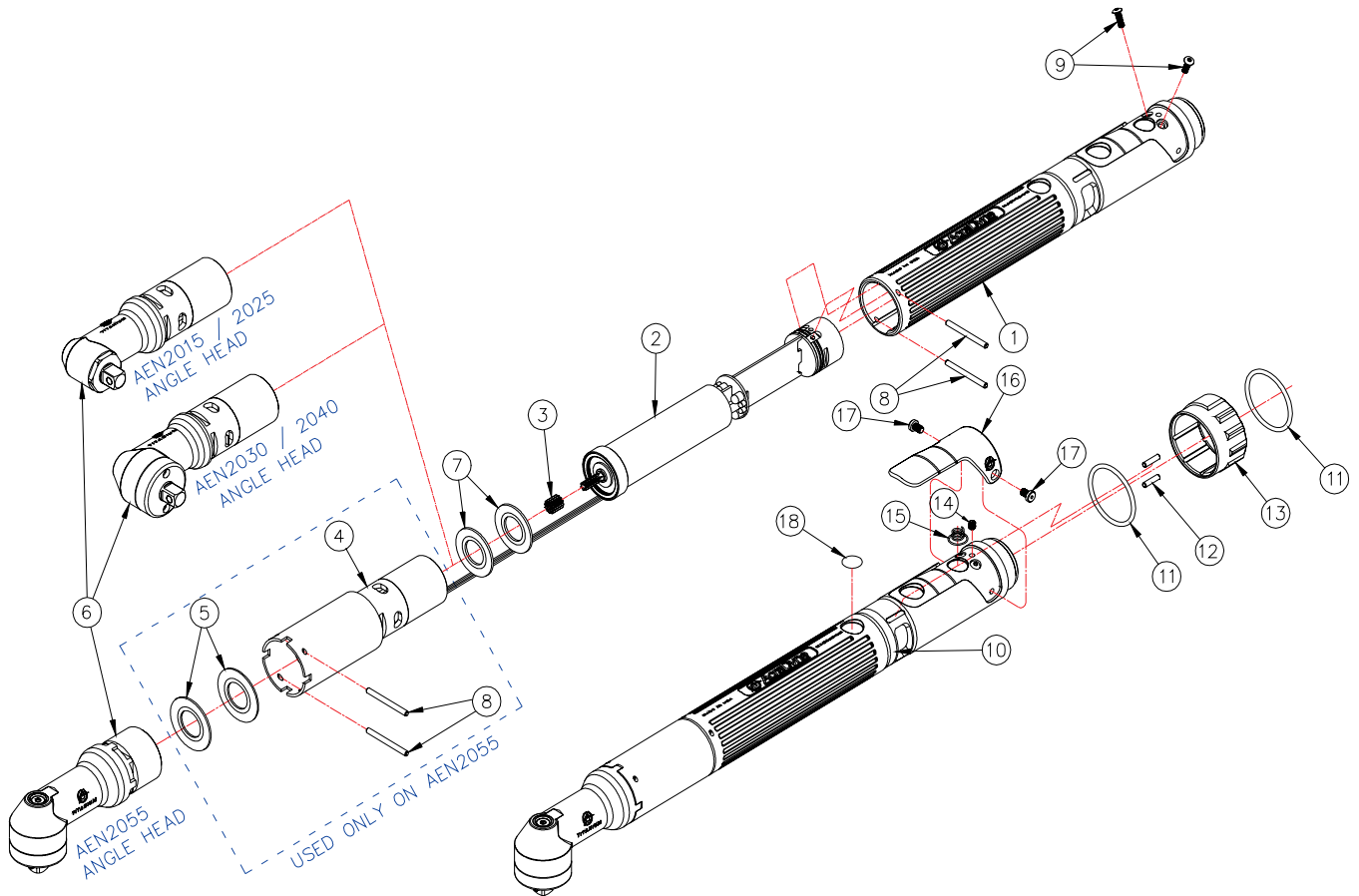
## 3. Start Lever Operation:

To start the tool, simply depress the lever. The permanently mounted magnet on the underside of the handle will activate the start circuit. When the tool reaches torque, the tool will stop automatically.

A complete tool system consists of the following items:

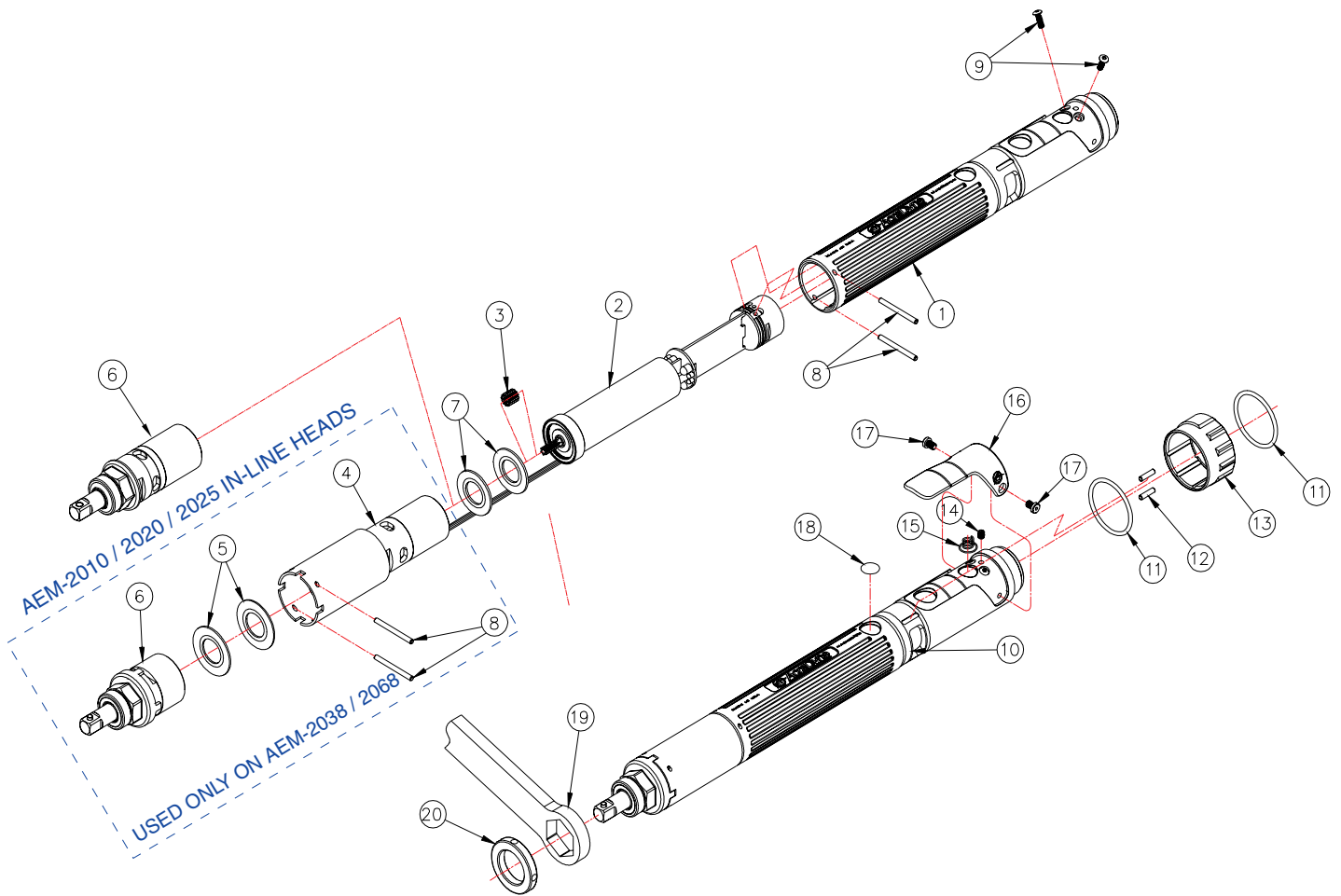


# 2000 SERIES ANGLE NUTRUNNERS - OVERALL ASSEMBLY



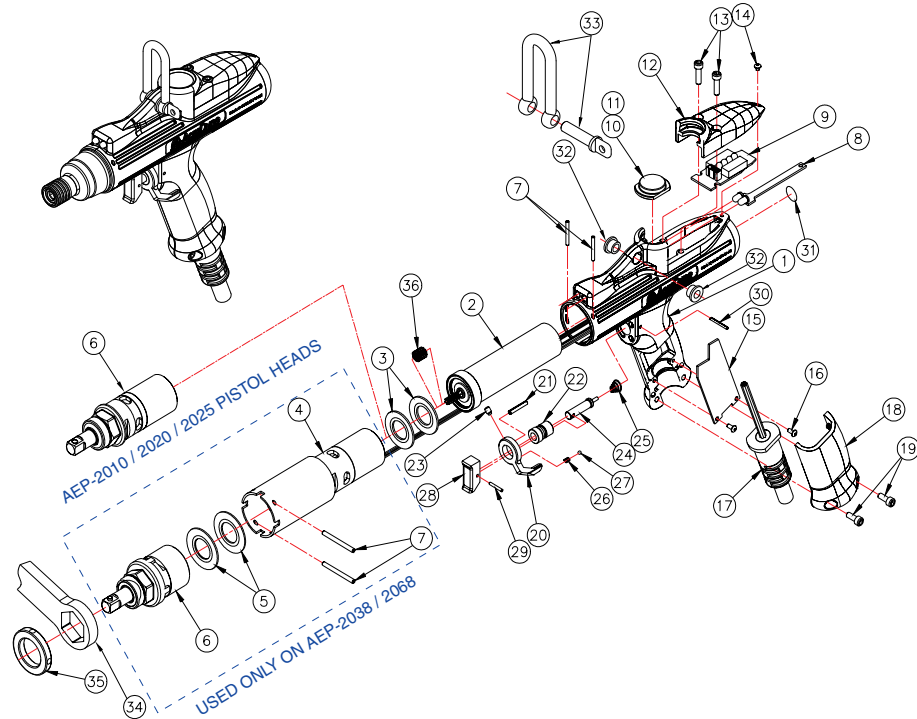
ITEM #	AEN 2015	AEN 2025	AEN 2030	AEN 2040	AEN 2055	QTY.	PART #	DESCRIPTION
1	X	X	X	X	X	1	20106	2000 MOTOR HANDLE HOUSING
2	X	X	X		X	1	21251	2000 MOTOR / ID BOARD ASSEMBLY
				X		1	21270	
3	X				X	1	21145	12T SUN GEAR
4					X	1	21169	GEARTRAIN ASSEMBLY
5					X	2	20864	BELLEVILLE WASHER
6	X					1	21679	ANGLE HEAD / GEARTRAIN ASSEMBLY
		X				1	21069	
			X			1	21947	
				X		1	21078	
					X	1	20867	ANGLE HEAD ASSEMBLY
7	X	X	X	X	X	2	20115	BELLEVILLE WASHER
8	X	X	X	X		2	20116	PIN
					X	4		
9	X	X	X	X	X	2	20532	SCREW
10	X	X	X	X	X	1	20020	LABEL
11	X	X	X	X	X	2	21205	O-RING
12	X	X	X	X	X	2	20535	DOWEL
13	X	X	X	X	X	1	20300	REVERSE / LIGHT RING ASSEMBLY
14	X	X	X	X	X	1	20092	SET SCREW
15	X	X	X	X	X	1	20132	SPRING
16	X	X	X	X	X	1	20149	THROTTLE LEVER ASSEMBLY
17	X	X	X	X	X	2	20061	SCREW
18	X	X	X	X	X	1	20533	CALIBRATION DECAL

# 2000 SERIES IN-LINE NUTRUNNERS - OVERALL ASSEMBLY



ITEM #	AEM 2010	AEM 2020	AEM 2025	AEM 2038	AEM 2068	QTY.	PART #	DESCRIPTION
1	X	X	X	X	X	1	20106	2000 MOTOR HANDLE HOUSING
2	X	X		X	X	1	21251	2000 MOTOR / ID BOARD ASSEMBLY
			X			1	21270	
3	X			X		1	21145	12T SUN GEAR
4				X		1	21169	GEARTRAIN ASSEMBLY
					X	1	21141	
5				X	X	2	20864	BELLEVILLE WASHER
6	X					1	21170	IN-LINE HEAD / GEARTRAIN ASSEMBLY
		X				1	21943	
			X			1	20450	
				X	X	1	20877	IN-LINE HEAD ASSEMBLY
7	X	X	X	X	X	2	20115	BELLEVILLE WASHER
8	X	X	X			2	20116	PIN
				X	X	4		
9	X	X	X	X	X	2	20532	SCREW
10	X	X	X	X	X	1	20020	LABEL
11	X	X	X	X	X	2	21205	O-RING
12	X	X	X	X	X	2	20535	DOWEL
13	X	X	X	X	X	1	20300	REVERSE / LIGHT RING ASSEMBLY
14	X	X	X	X	X	1	20092	SET SCREW
15	X	X	X	X	X	1	20132	SPRING
16	X	X	X	X	X	1	20149	THROTTLE LEVER ASSEMBLY
17	X	X	X	X	X	2	20061	SCREW
18	X	X	X	X	X	1	20533	CALIBRATION DECAL
19	X	X	X	X	X	1	20437	REACTION BAR
20	X	X	X	X	X	1	20454	FIXTURE / RETAINER NUT

# 2000 SERIES PISTOL NUTRUNNERS - OVERALL ASSEMBLY



ITEM #	AEP 2010	AEP 2020	AEP 2025	AEP 2038	AEP 2068	QTY.	PART #	DESCRIPTION
1	X	X	X	X	X	1	20346	2000 MOTOR HANDLE HOUSING
2	X	X		X	X	1	21247	2000 MOTOR ASSEMBLY
3	X	X	X	X	X	2	20115	BELLEVILLE WASHER
4				X		1	21169	GEARTRAIN ASSEMBLY
5				X	X	2	20864	BELLEVILLE WASHER
6	X					1	21170	IN-LINE HEAD / GEARTRAIN ASSEMBLY
		X				1	21943	
			X			1	20450	
7	X	X	X	X	X	2	20877	IN-LINE HEAD ASSEMBLY
				X	X	4	20116	PIN
8	X	X	X	X	X	1	21105	PC BOARD-HEADLAMP
9	X	X	X	X	X	1	21303	PC BOARD-DISPLAY
10	X	X	X	X	X	1	20762	CAP PLUG
11	X	X	X	X	X	1	20816	LABEL
12	X	X	X	X	X	1	20671	TOP COVER / CABLE RESTRAINT
13	X	X	X	X	X	2	20757	SCREW
14	X	X	X	X	X	1	20758	SCREW
15	X	X	X	X	X	1	21301	ID PCB ASSEMBLY
16	X	X	X	X	X	2	20729	SCREW
17	X	X	X	X	X	1	20292	8' WHIP TOOL CABLE
18	X	X	X	X	X	1	20674	HANDLE COVER / CABLE RESTRAINT
19	X	X	X	X	X	2	20760	SCREW
20	X	X	X	X	X	1	20677	REVERSE LEVER
21	X	X	X	X	X	1	20810	REVERSE PIN/MAGNET ASSY.
22	X	X	X	X	X	1	20676	THROTTLE/REVERSE BUSHING
23	X	X	X	X	X	1	20768	SCREW
24	X	X	X	X	X	1	20809	THROTTLE PLUNGER ASSY.
25	X	X	X	X	X	1	20751	SPRING
26	X	X	X	X	X	1	20746	SPRING
27	X	X	X	X	X	1	20975	DETENT BALL
28	X	X	X	X	X	1	20745	THROTTLE/TRIGGER BUTTON
29	X	X	X	X	X	1	20749	ROLL PIN
30	X	X	X	X	X	1	20747	ROLL PIN
31	X	X	X	X	X	1	20533	CALIBRATION DECAL
32	X	X	X	X	X	2	21279	BUSHING
33	X	X	X	X	X	1	21278	HANGER ASSEMBLY
34	X	X	X	X	X	1	20437	REACTION BAR
35	X	X	X	X	X	1	20454	FIXTURE/RETAINING NUT





**AIMCO**

---

1204 E. Maple Rd.  
Troy, MI 48083

(800) 852-1368  
FAX (800) 582-9015

**CORPORATE HEADQUARTERS**  
10000 S.E. Pine St.  
Portland, OR 97216

(800) 852-1368  
FAX (800) 582-9015

Ave. Morones Prieto 2110 Pte.  
Col. Loma Larga  
Monterrey, NL CP 64710, Mexico  
52-81 1001-1600  
FAX 52-81 1001-1630