

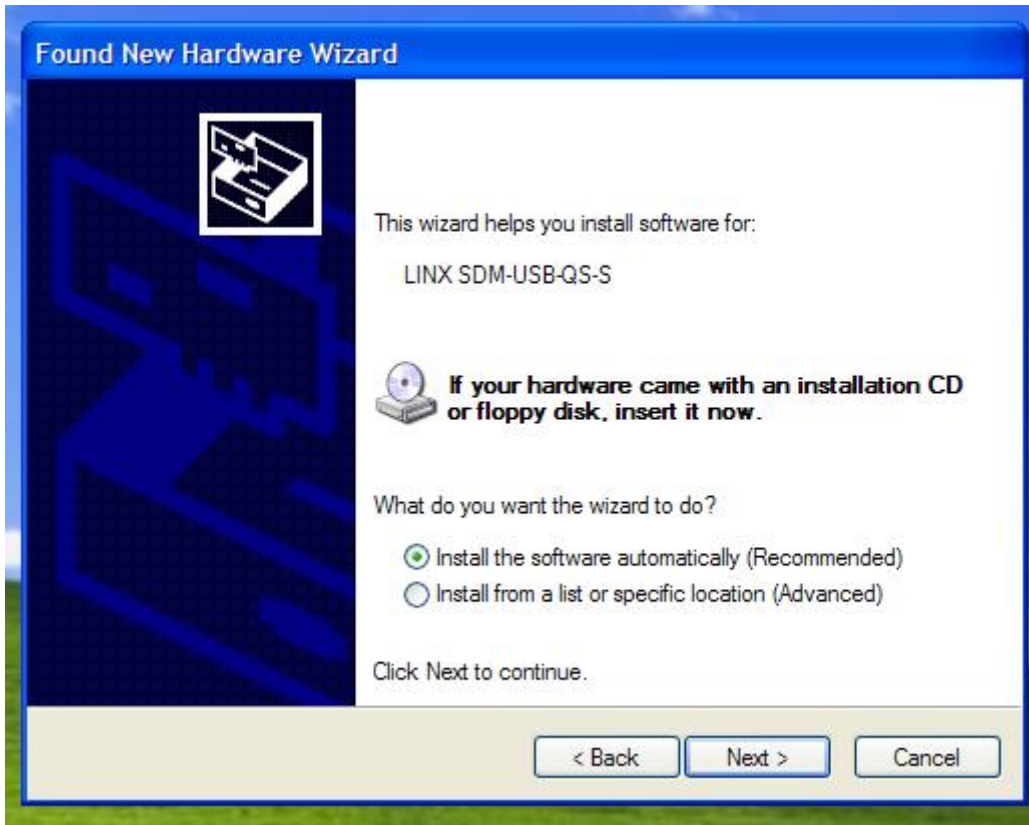
AcraDyne
Toolware Manual Addendum:
Toolware USB Driver Installation Instructions
25 January 2007

The following are instructions on how to install the USB to CAN interface module (CIM) driver for Toolware. This driver is necessary in order to use the CIM to communicate to the controller via the USB port on the host PC.

1. If you have a Toolware CD, Insert the Toolware CD in the PC's disk drive. Toolware will begin to install. If you have already installed Toolware, cancel the installation.
2. If you have received the "Drivers" file via e-mail or other source, then copy and save it to your desktop.
3. Connect the CIM module to one of the USB ports on the PC. If the driver has not previously been installed, the PC will automatically detect the new USB hardware and will start a "Found New Hardware Wizard".
4. The dialog asks if Windows can look for the driver on the internet. Select "No, not at this time". Then select next>.



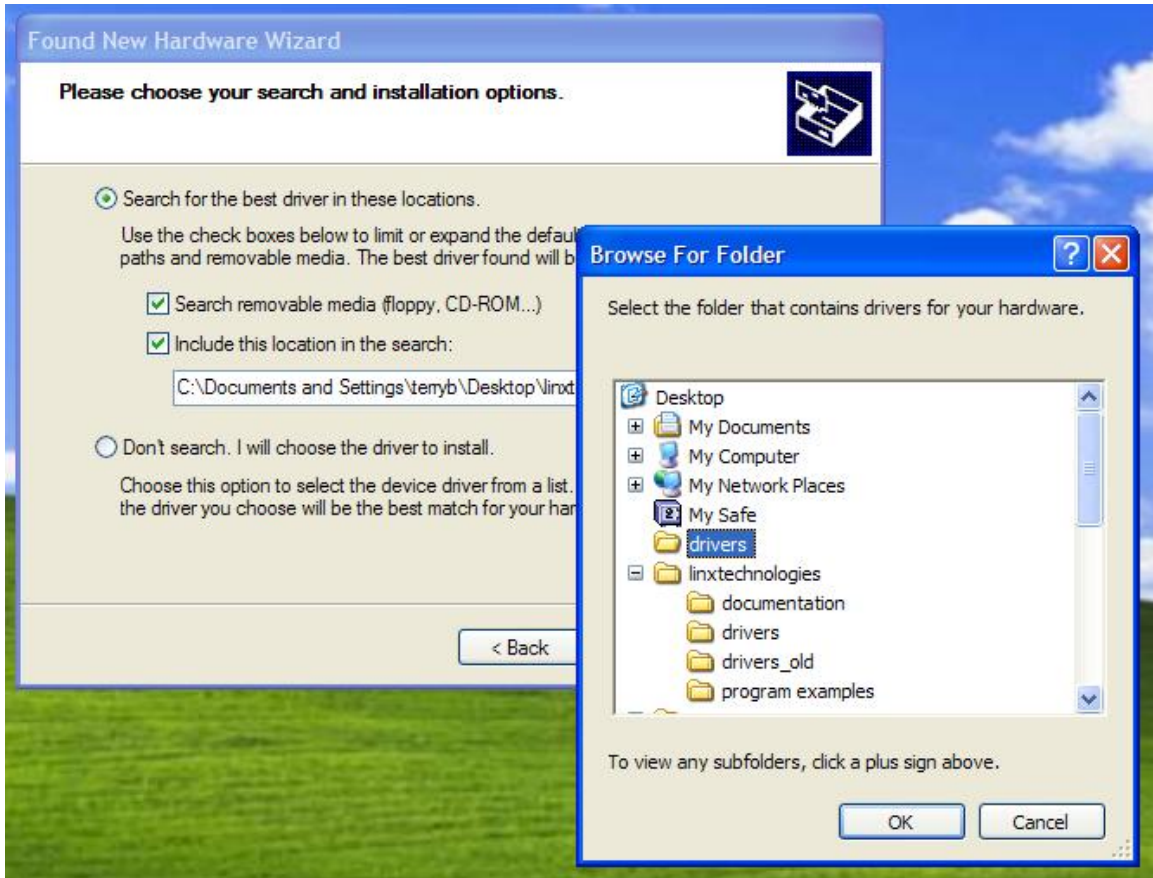
5. On the next dialog, select to install the software automatically. Then next>.



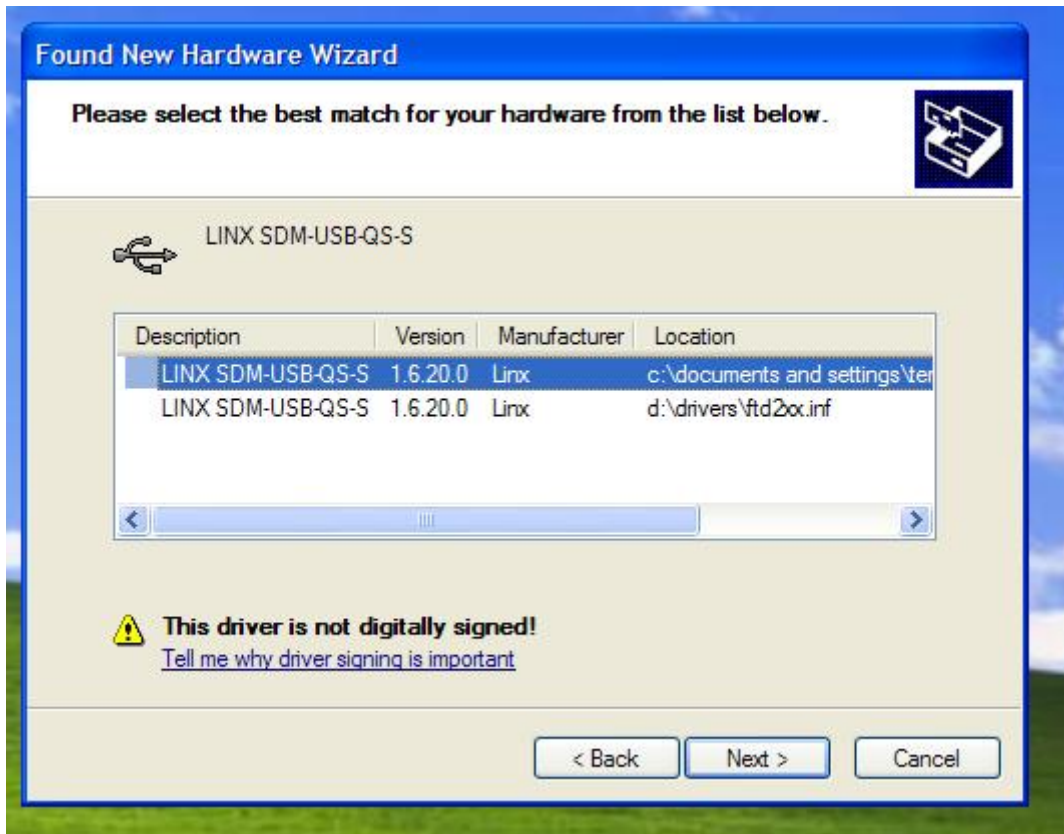
6. Select: Search for best drivers, Search removable media. If the "Drivers" file has been copied to the desktop, select include this location. (If the Toolware CD is in the disk drive you can select next> and skip to 8.)



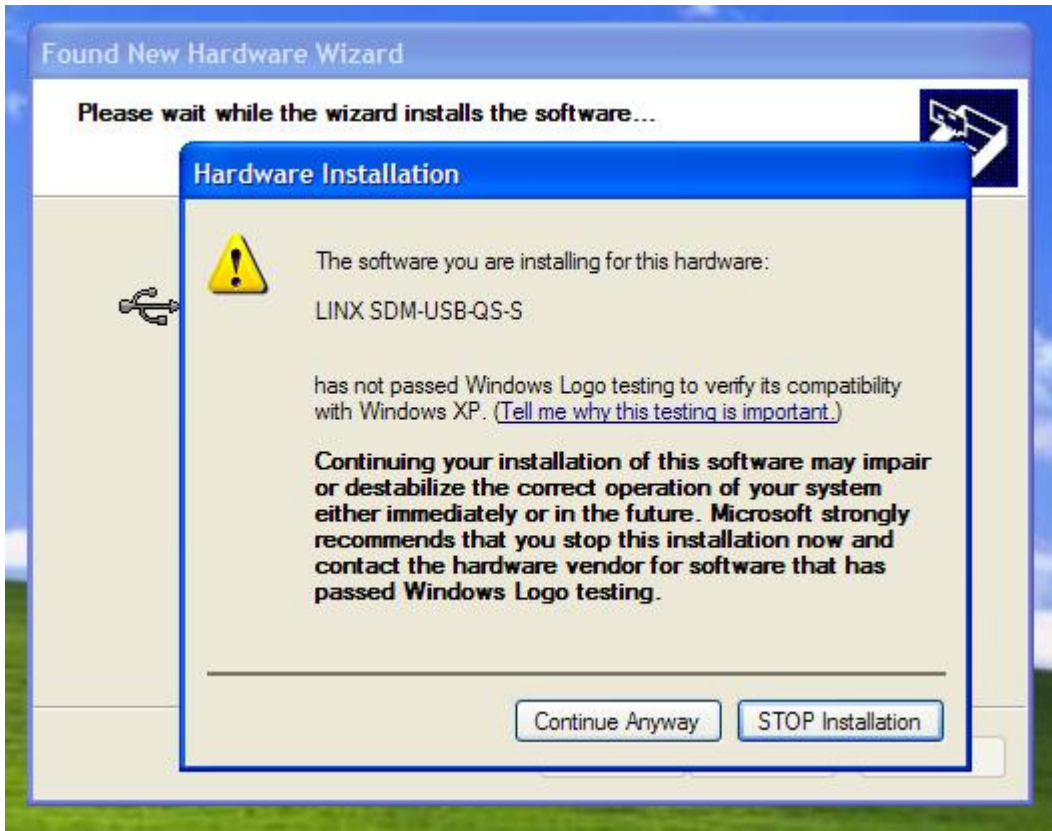
7. If the Drivers file has been copied to the desk top, select browse to search for the location of the drivers file. (Note this set is not necessary if installing the driver directly from the Toolware CD)



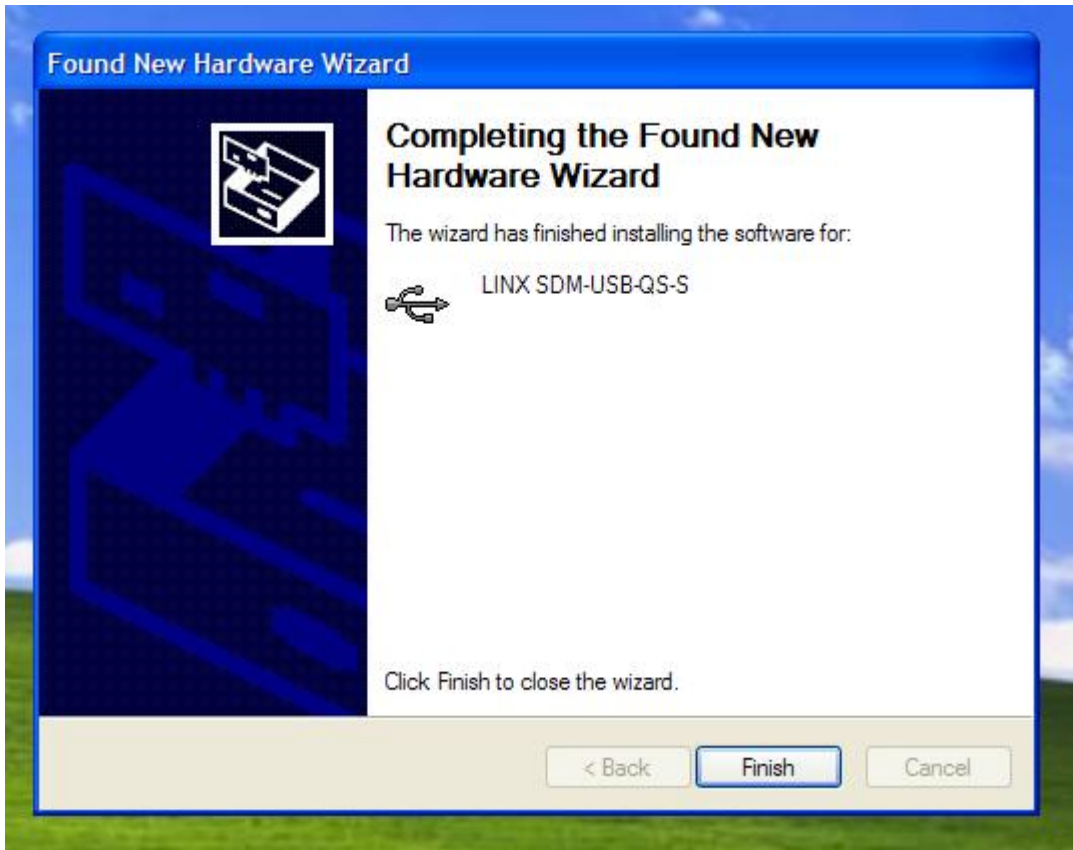
8. The Wizard will search for compatible drivers. If more than one is listed then select LINX SDM-USB-QS-S. Then Next>



9. Select "continue anyway" on the hardware installation warning.



10. Select finish to complete then exit the wizard.



11. Open Toolware. "Open the Set Controller Dialog" From the menu: File >>Set Connection. Select USB and click "Connect" the message below should say USB Connection Established (or Connected USB in Toolware 2007).

