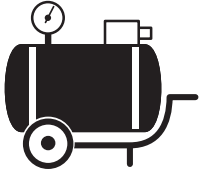


## AIR SUPPLY



### AIR HOSE SIZE:

	Air Inlet		Air Hose
1/8" NPT air inlet	use	1/4" ID air hose	
1/4" NPT air inlet	use	3/8" ID air hose	
3/8" NPT air inlet	use	1/2" ID air hose	

**AIR PRESSURE:** 90 PSI (6.5 kg/cm<sup>2</sup>) Air Pressure is recommended for the most efficient performance. Too high of air pressure will shorten the life of the tool.

## LUBRICATION



**FOR AIR MOTOR:** Apply turbine oil before and after operation. (For example, MOBIL TURBINE OIL #32, SHELL TURBINE OIL #32, or equivalent.)

**FOR BEARINGS:** Apply recommended, high quality grease properly (for example: SHELL ALVANIA NO.2, SHELL ALVANIAEP, MOBILPLEX 2, MOBILPLEX 47 or equivalent) once every three months. Lubrication should be performed by competent personnel during regular overhaul to maintain optimum performance.

**FOR ANGLE GEARS:** Apply recommended, high quality grease properly (for example: SHELL ALVANIA NO.2, SHELL ALVANIAEP, MOBILPLEX 2, MOBILPLEX 47 or equivalent) once per month when used on single shift basis. Lubrication interval should be more frequent with multi-shift usage. Lubrication should be made through visible fitting. Excessive amounts of grease will cause slowing and/or overheating.

## MAINTENANCE



**DRY AND CLEAN AIR:** Drain daily and install filter at or near the take-off point to prevent trouble from foreign matter.

**AIR HOSE AND JOINTS:** Use air hose (the shorter, the better), joints and other fittings of good condition and of proper size to avoid pressure drop.

**REGULAR OVERHAUL:** At least once every three months regular or periodical overhaul by a competent person is needed for best performance and trouble free operation.

**GENUINE PARTS:** Use only EAGLE genuine spare parts for replacement.

Any repair of EAGLE tools must be completed by Eagle Industries or an authorized EAGLE Service Center. Contact EAGLE at (503) 254-1749 for an authorized Service Center in your area.



## Operating Instructions for

# Horizontal, Angle & Vertical Grinders

REFERENCE ONLY



# Horizontal, Angle & Vertical Grinders

It is the responsibility of the employer to place the information on this instruction sheet into the hands of the operator.



Eagle Industries tools have been designed with safety in mind. But it is still the responsibility of the user or service technician to insure that there is no misuse.

On the opposite page is a brief description of safe use practices when using grinders.

Always operate, inspect and maintain this tool in accordance with American National Standards Institute Safety Code for Portable Air Tools (ANSI 13186.1) and any other applicable safety codes and regulations.

## IMPORTANT

Make sure that these instructions are fully understood before operating this tool. The tool and its attachments and accessories must only be used for their designed purpose. For product liability and safety reasons, any modifications of the tool and its accessories must be agreed upon by the technical authority of the manufacturer. All locally legislated safety rules with regard to installation, operation and maintenance shall be respected at all times.

## INSTRUCTIONS FOR SAFE OPERATION

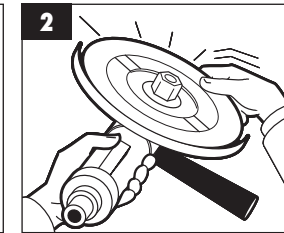
**FIRST**, follow your local safety regulations strictly on grinders and abrasives.



Ensure that the RPM of the grinder does not exceed the rated max. RPM of the wheel.

Remove the wheel before checking the RPM of the grinder.

Make sure that the rated speed marking on the tool is readable.



Ensure that the wheel is the correct fit for the grinder and that it is not damaged or worn.

The wheel should have correct hole dimensions and fit secure on the spindle.

Check that the flange and wheel combination correspond to national regulations.



After mounting the wheel, operate the grinder in a protected area to check that no failure occurs.

Keep the space around the grinder free from other people.



Use the recommended wheel guard. Ensure that it is not damaged and that the mountings are secure.

Never use a grinder without the wheel guard when the grinder wheel requires one.

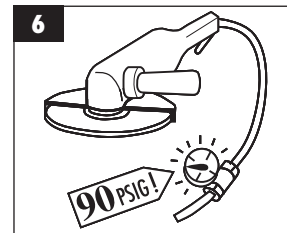
The ANSI B7.1 safety code specifies that grinding wheel must be used with protective guard. Always use the wheel guard furnished with the grinder. Obtain a suitable guard from the manufacturer if you change the type of wheel being used.



Use personal protection equipment.

Avoid inhaling dust resulting from the grinding operation by using an approved dust mask or dust exhaust system.

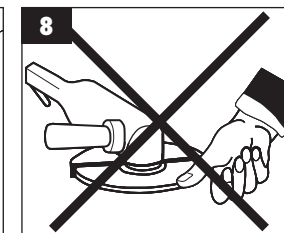
When using wire brushes, wear goggles and clothing that offer protection from the thrown wires.



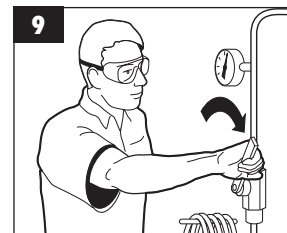
Ensure that pressure does not exceed 90 PSIG. Use a pressure regulator.



Keep loose clothing and long hair clear of the grinder.



Beware of run-on. Do not touch the wheel, after turning it off, until it has stopped completely.



Turn off air supply before changing wheel or disconnecting hose. Beware of whipping air hose.