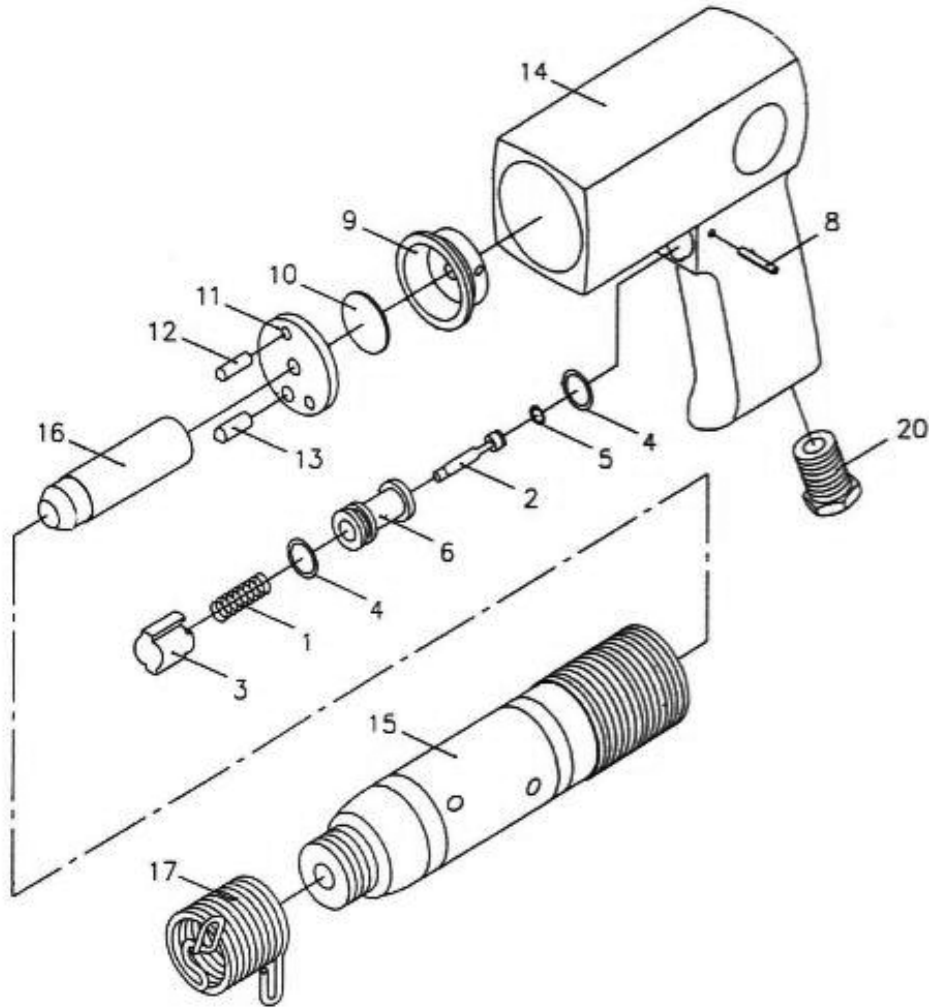


# 4001 AIR HAMMER

## EXPLODED VIEW



### IMPORTANT

Failure to comply with the following will result in damage to the tool. On a new chopper the threads will stretch slightly. You must re-tighten a new chipping hammer handle after 2-3 shifts of usage.

## PARTS LIST – FOR REFERENCE ONLY

Index Number	Part Number	Description	Qty.	Index Number	Part Number	Description	Qty.	Index Number	Part Number	Description	Qty.
1	302-01	Spring-Valve	1	6	302-06	Button-Valve	1	14	302-14	Handle	1
2	302-02	Throttle-Valve **	1	8	302-08	Pin-Grooved	1	15	302-15	Cylinder (171MM)	1
	302-02A	Throttle Valve Assy.		9	302-09	Lid-Valve Case	1	16	302-16	Piston	1
3	302-03	Button-Throttle	1	10	302-10	Disk-Valve	1*	17	302-17	Retainer Zip Change	1
4	302-04	O-Ring P12	2*	11	302-11	Case Valve	1	20	302-20	Air Inlet Bushing	1
5	302-05	O-Ring P4	1*								

### TECHNICAL DATA

	Max Air Pressure	Recommended Air Hose Size	BPM Free Speed	Max Air Flow CFM	Weight (lbs.)
4001	90 psi	3/8"	3,500	15	3.8

### FOOTNOTES

\* Parts Available in Repair Kit 4001-RK\*



When ordering spare parts, please specify tool type, part number and description

10000 SE PINE, PORTLAND, OR 97216  
503-254-1749 FAX 503-256-4026

REVISED 1/08