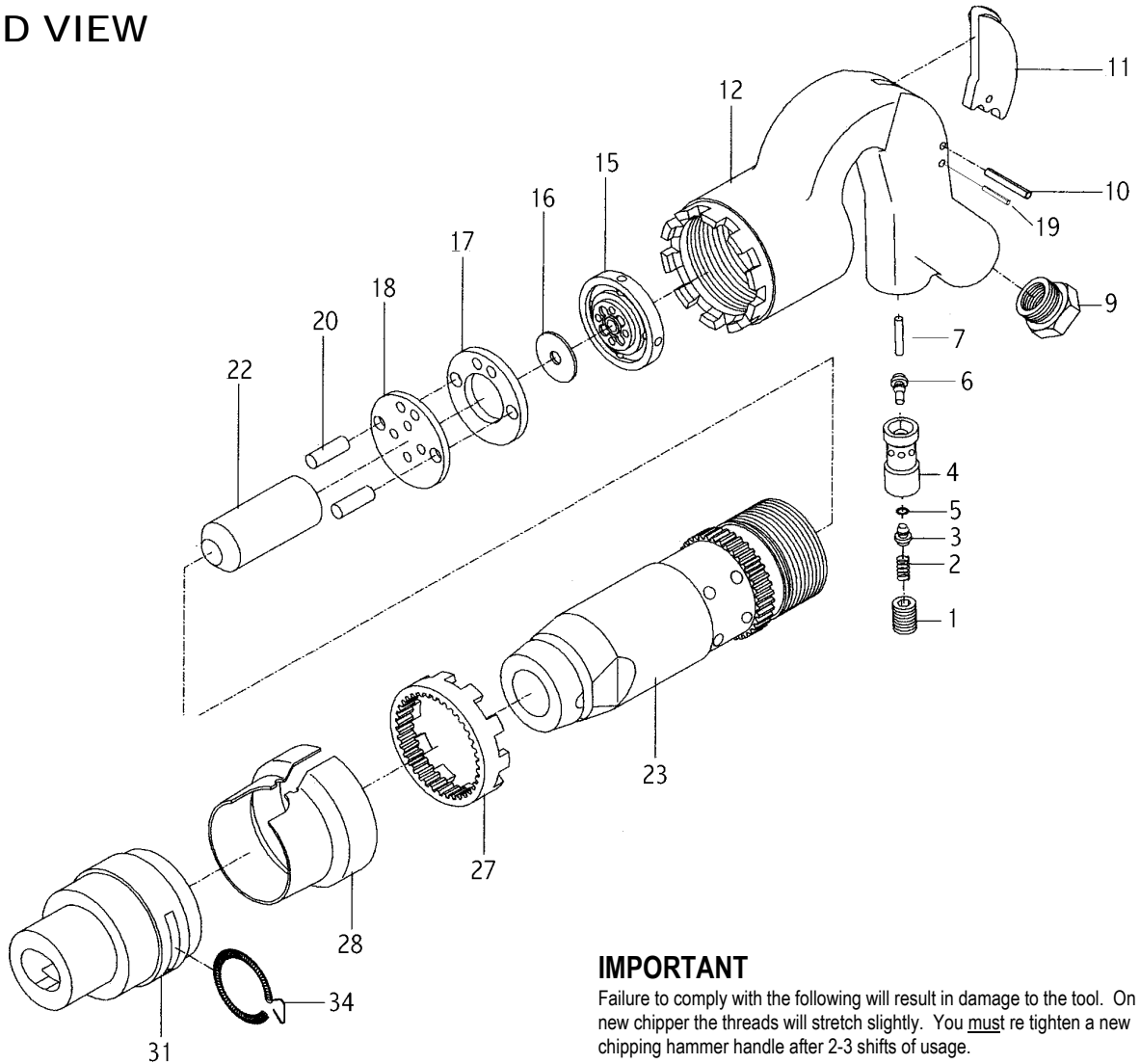


# 4009 2" CHIPPING HAMMER

## EXPLODED VIEW



### IMPORTANT

Failure to comply with the following will result in damage to the tool. On a new chipper the threads will stretch slightly. You must re tighten a new chipping hammer handle after 2-3 shifts of usage.

## PARTS LIST – FOR REFERENCE ONLY

Index Number	Part Number	Description	Qty.	Index Number	Part Number	Description	Qty.	Index Number	Part Number	Description	Qty.
1	312-01	Throttle Plug Valve	1	11	312-11	Throttle Lever	1	23	312-23-2	Cylinder	1
2	312-02	Throttle Spring Valve	1*	12	312-12	Handle (Included No. 4, 7, 9)	1	27	312-27	Lock	1
3	312-03	Throttle Valve (Included # 5)	1*	15	312-15	Upper Valve Case Lid	1	28	312-28	Lock Shield	1
4	312-04	Throttle Bushing Valve	1	16	312-16	Valve	1	31	312-31	Retainer Sleeve	1
5	312-05	O-Ring	1*	17	312-17	Valve Case	1	34	312-34	Lock-coil Spring	1
6	312-06	Push Pin	1*	18	312-18	Lower Valve Case Lid	1	35	312-35	Cylinder Bushing	1
7	312-07	Bushing Push Pin	1	19	312-19	Stop Pin	1	35	312-35H	Hex Bushing (Optional)	1
9	312-08	Permanent Bushing	1	20	312-20	Dowel Pin	2*		312A-12A	Handle Assy. (Included #1,2,3,4,5,6,7,9,10,11,12,19)	1
10	312-10	Throttle Pin Lever	1	22	312-22-2	Piston	1				

### TECHNICAL DATA

	Max Air Pressure	Recommended Air Hose Size	BPM Free Speed	Max Air Flow CFM	Weight (lbs.)
4009	90 psi	3/8	1,900	30	16

### FOOTNOTES

\* Parts Availabl in Repair Kit 4009-RK\*



When ordering spare parts, please specify tool type, part number and description

10000 SE PINE, PORTLAND, OR 97216  
503-254-1749 FAX 503-256-4026

REVISED 7/99