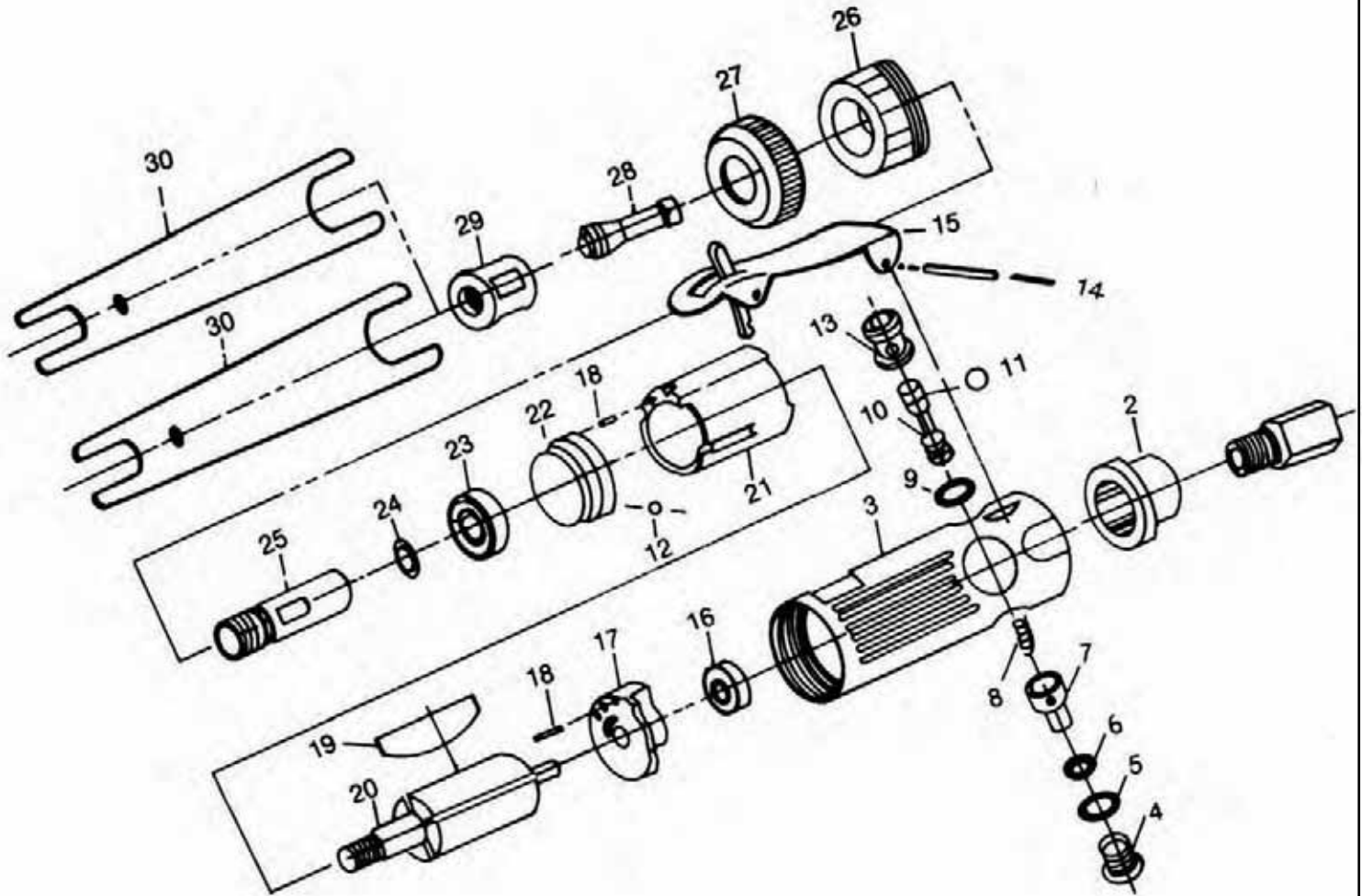


5002C DIE GRINDER

EXPLODED VIEW



PARTS LIST – FOR REFERENCE ONLY

Index Number	Part Number	Description	Qty.	Index Number	Part Number	Description	Qty.	Index Number	Part Number	Description	Qty.
1	5002C-01	Inlet Bushing	1	11	5002C-11	'O'Ring	1 *	21	5002C-21	Cylinder	1
2	5002C-02	Exhaust Deflector	1	12	5002C-12	Ball	1	22	5002C-22	Front End Plate	1
3	5002C-03	Motor Housing	1	14	5002C-13	Valve	1	23	5002C-23	Ball Bearing	1 *
4	5002C-04	Valve Screw	1	14	5002C-14	Throttle Lever Pin	1	24	5002C-24	Washer	1
5	5002C-05	O' Ring	1 *	15	5002C-15	Safety Throttle Lever	1	25	5002C-25	Spindle	1
6	5002C-06	'O'Ring	1 *	16	5002C-16	Ball Bearing	1	26	5002C-26	Retainer	1
7	5002C-07	Air Regulator	1	17	5002C-17	Rear Plate	1	27	5002C-27	Housing Cap	1
8	5002C-08	Spring	1 *	18	5002C-18	Pin	2	28	5002C-28	1/4" Collet	1
9	5002C-09	'O' Ring	1 *	19	5002C-19	Rotor Blades	4 *	29	5002C-29	Collet Nut	1
10	5002C-10	Throttle Valve	1	20	5002C-20	Rotor	1	30	5002C-30	Double Ended Spanner	2

TECHNICAL DATA

	Max Air Pressure	Recommended Air Hose Size	RPM Free Speed	Max Air Flow CFM	Weight (lbs.)
5002C (Formerly 5002A)	90 psi	3/8"	22,000	10	1.1

FOOTNOTES

When ordering spare parts, please specify tool type, part number and description

10000 SE PINE, PORTLAND, OR 97216
503-254-1749 FAX 503-256-4026

REVISED 9/07

