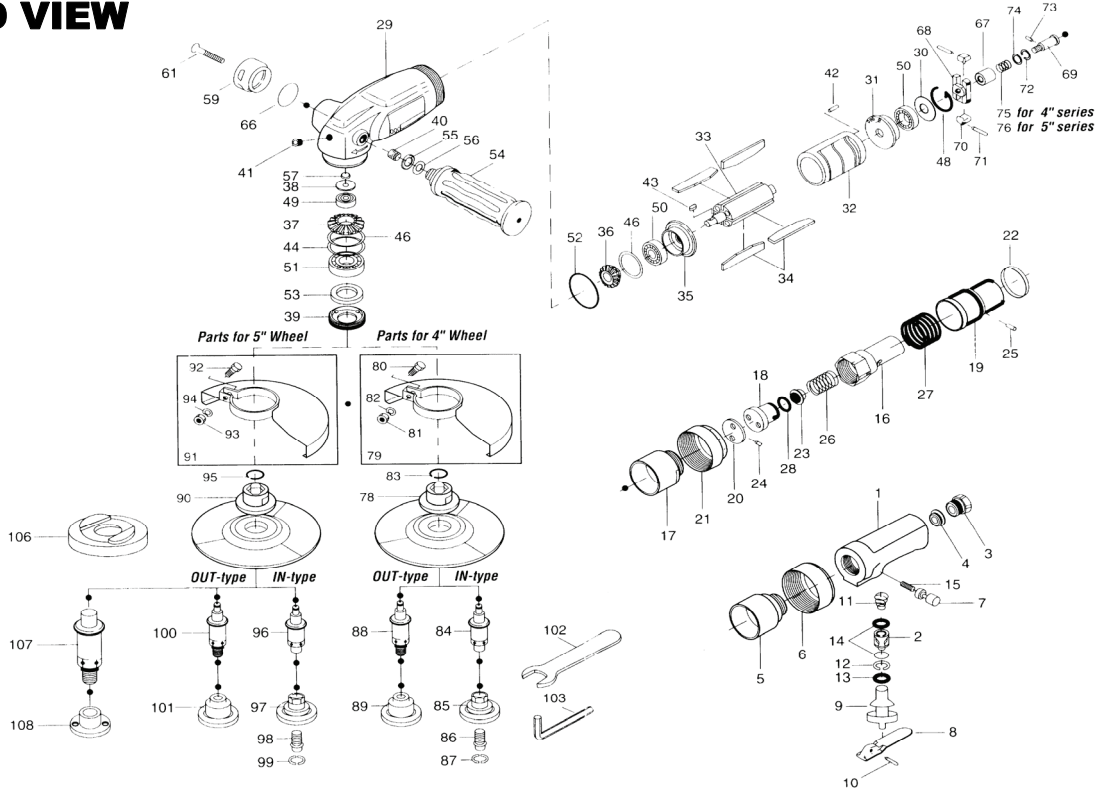


5104 4" ANGLE GRINDER

EXPLODED VIEW



PARTS LIST – FOR REFERENCE ONLY

Index No.	Part Number	Description	Qty.	Index No.	Part Number	Description	Qty.	Index No.	Part Number	Description	Qty.
1	95212U-01	Handle (Lever Type)	1	26	95212U-26	Spring	1	53	95212U-53	Felt Ring	1 ●▲
2	95212U-02	Valve Bushing	1	27	95212U-27	Spring	1	54	95212U-54	Dead Handle	1 ●▲
3	95212U-03	Air Inlet Bushing	1	28	95212U-28	O-Ring	1	55	95212U-55	Flat Washer	1 ●▲
4	95212U-04	Filter	1	29	95212U-29	Casing	1	56	95212U-56	Spring Washer	1 ●▲
5	95212U-05	Valve Body Connector	1	30	95212U-30	Rear Plate Spacer	1	57	95212U-57	Ouster Snap Ring	1 ●▲
6	95212U-06	Valve Body Nut	1	31	95212U-31	Rear Plate	1	59	95212U-59	Exhaust Stack	1 ●▲
7	95212U-07	Safety Pin	1	32	95212U-32	Cylinder	1	61	95212U-61	Allen Head Screw	1 ●▲
8	95212U-08	Valve Lever	1	33	95212U-33	Rotor	1	66	95212U-66	O-Ring	1 ●▲
9	95212U-09	Valve	1	34	95212U-34	Blade	4	67	95212U-67	Governor Valve	1 ●▲
10	95212U-10	Roll Pin	1	35	95212U-35	Front Plate	1	68	95212U-68	Governor Cage	1 ●▲
11	95212U-11	Cone Spring	1	36	95212U-36	Driving Gear	1	69	95212U-69	Governor Spindle	1 ●▲
12	95212U-12	Inner Snap Ring	1	37	95212U-37	Driven Gear	1	70	95212U-70	Governor Weight	1 ●▲
13	95212U-13	O-Ring	1	38	95212U-38	Casing Rear Cover	1	71	95212U-71	Roll Pin	1 ●▲
14	95212U-14	O-Ring	2	39	95212U-39	Casing Front Cover	1	72	95212U-72	Adjusting Spacer	1 ●▲
15	95212U-15	Spring	1	40	95212U-40	Heli Sert	1	73	95212U-73	Pin	1 ●▲
100	95212U-16	Valve Body	1	41	95212U-41	Allen Head Plug	1	74	95212U-74	Spacer	1 ●▲
17	95212U-17	Valve Body Connector	1	42	95212U-42	Roll Pin	1	75	95212U-75	4" Series Spring	1 ●▲
18	95212U-18	Valve	1	43	95212U-43	Key	1	76	95212U-76	5" Series Spring	1 ●▲
19	95212U-19	Valve Handle	1	44	95212U-44	Spacer	1	78	95212U-78	Wheel Holder	1 ●▲
20	95212U-20	Valve Bushing	1	46	95212U-46	Adjusting Spacer	1	79	95212U-79	Wheel Guard	1 ●▲
21	95212U-21	Valve Body Nut	1	48	95212U-48	Snap Ring	2	80	95212U-80	Hexagon Head Bolt	1 ●
22	95212U-22	Band	1	49	95212U-49	Ball Bearing	1	81	95212U-81	Hexagon Nut	1 ●
23	95212U-23	Filter	1	50	95212U-50	Ball Bearing	2	82	95212U-82	Spring Washer	1 ●
24	95212U-24	Pin	1	51	95212U-51	Ball Bearing	1	83	95212U-83	Snap Ring	1 ●
25	95212U-25	Roller Pin	1	52	95212U-52	O-Ring	1	84	95212U-84	Wheel Spindle	1 ●
								85	95212U-85	Wheel Nut Flange	1 ●
								86	95212U-86	Hexagon Socket	1 ●▲
								87	95212U-87	Inner Snap Ring	1 ●▲
								88	95212U-88	Wheel Spindle	1 ●
								89	95212U-89	Wheel Nut Flange	1 ●
								90	95212U-90	Wheel Holder	1 ▲
								91	95212U-91	Wheel Guard	1 ▲
								92	95212U-92	Hexagon Head Bolt	1 ▲
								93	95212U-93	Hexagon Nut	1 ▲
								94	95212U-94	Spring Washer	1 ▲
								95	95212U-95	Snap Ring	1 ▲
								96	95212U-96	Wheel Spring	1 ▲
								97	95212U-97	Wheel Nut Flange	1 ▲
								98	95212U-98	Hexagon Socket	1 ▲
								99	95212U-99	Inner Snap Ring	1 ▲
								100	95212U-100	Wheel Spindle	1 ▲
								101	95212U-101	Wheel Nut Flange	1 ▲
								102	95212U-102	Spanner	1 ●▲
								103	95212U-103	Allen Wrench	1 ●▲
								105	95212U-105	Connecting Screw	1 ●▲
								106	95212U-106	Wheel Holder	1 ▲
								107	95212U-107	Wheel Spindle	1 ▲
								108	95212U-108	Wheel Nut Flange	1 ▲

TECHNICAL DATA

	RPM Free Speed	CFM Max Air Flow	Weight (lb)	Wheel Capacity (in)	Spindle thread
5104 {EAG-104-135}	13,500	34	4.4	4	3/8" - 24
5105 {EAG-105-108}	10,800	34	4.4	5	5/8" - 11

FOOTNOTES

- Indicates 5104 part
- ▲ Indicates 5105 part



When ordering spare parts, please specify tool type, part number and description

10000 SE PINE, PORTLAND, OR 97216
503-254-1749 FAX 503-256-4026

REVISED 11/06