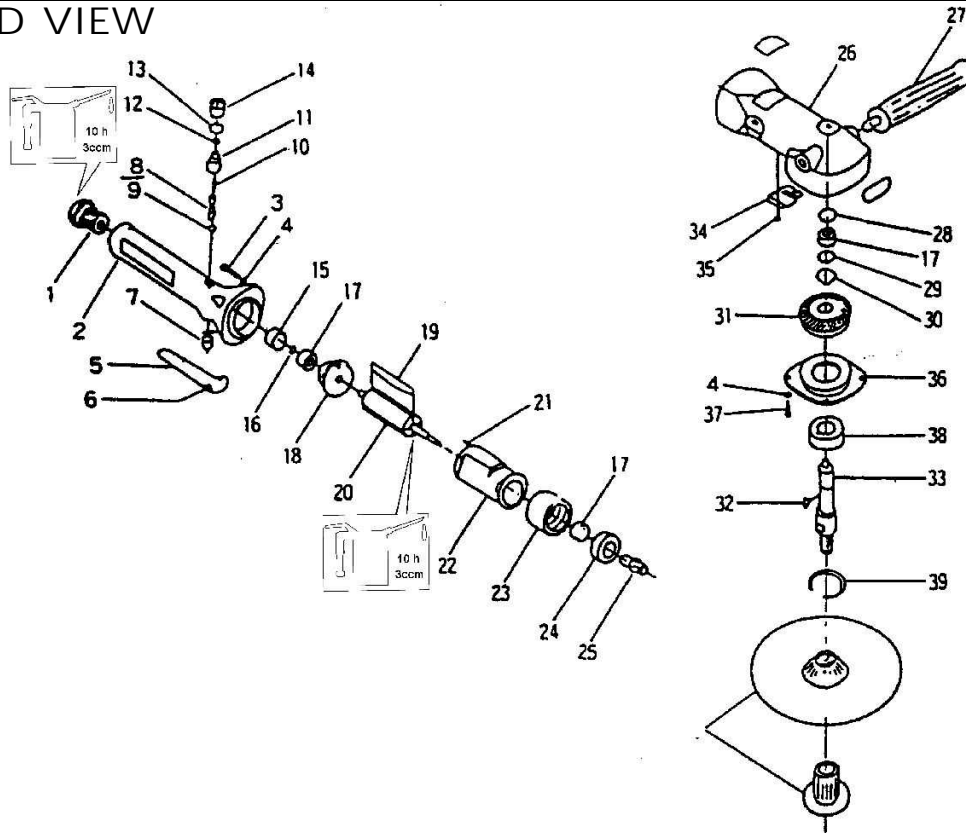


6507 7" ANGLE POLISHER

EXPLODED VIEW



PARTS LIST — FOR REFERENCE ONLY

Pos.	Bezeichnung	Description	Pos.	Bezeichnung	Description
rc7130a-01	Luftanschluß	Hose Adapter	rc7130a-36	Gehäusedeckel	Housing Cap
rc7130a-02	Handgriff	Valve Body	rc7130a-37	Schraube	Cap Screw
rc7130a-02atk	Dichtung	Gasket	rc7130a-38	Kugellager	Ball Bearing
rc7130a-03	Schraube	Cap Screw	rc7130a-39	Sprengring	Retaining Ring
rc7130a-04	Federscheibe	Washer	rc7130a-40	Teller/Zubehör:847016	Pad Assy./Acc.:847016
rc7130a-05	Betriebsdrücker	Throttle Lever	rc7130a-42	Spannmutter	Locknut
rc7130a-06	Arretierstift	Lever Pin	rc7130a-tk	Wartungsset 02a,9,12,13,19	Tune up kit
rc7130a-07	Büchse	Throttle Bushing			
rc7130a-08	Ventilstößel	Valve Stem			
rc7130a-09tk	O-Ring	O-Ring			
rc7130a-10	Ventilfeder	Valve Spring			
rc7130a-11	Mengenregulierung	Air Regulator			
rc7130a-12tk	O-Ring	O-Ring			
rc7130a-13tk	O-Ring	O-Ring			
rc7130a-14	Ventilschraube	Valve Screw			
rc7130a-15	Lagerabdeckung	Bearing Cap			
rc7130a-16	Sicherungsring	Retaining Ring			
rc7130a-17	Kugellager	Ball Bearing			
rc7130a-18	Motorendplatte, hinten	Rear End Plate			
rc7130a-19tk	Lamelle	Rotor Blade			
rc7130a-20	Rotor	Rotor			
rc7130a-21	Stift	Pin			
rc7130a-22	Zylinder	Cylinder			
rc7130a-23	Motorendplatte, vorne	Front End Plate			
rc7130a-23a	Scheibe	Spacer			
rc7130a-24	Kugellager	Ball Bearing			
rc7130a-25	Ritzel	Pinion Gear			
rc7130a-26	Motorgehäuse	Motor Housing			
rc7130a-27	Seitengriff	Dead Handle			
rc7130a-28	Lagerplatte	Bearing Plate			
rc7130a-29	Haltering	Retaining Ring			
rc7130a-30	Federscheibe	Wave Washer			
rc7130a-31	Tellerrad	Bevel Gear			
rc7130a-32	Paßfeder	Key			
rc7130a-33	Spindel	Working Spindle			
rc7130a-34	Auspuffabdeckung	Exhaust Deflector			
rc7130a-35	Schraube	Screw			

FOOTNOTES

Eagle offers a complete line of Tool Support products.
Visit our website at www.eagle-premier.com



When ordering spare parts, please specify tool type, part number and description.

10000 SE PINE, PORTLAND, OR 97216
877-273-3903 FAX 800-852-9015

REVISED 7/03