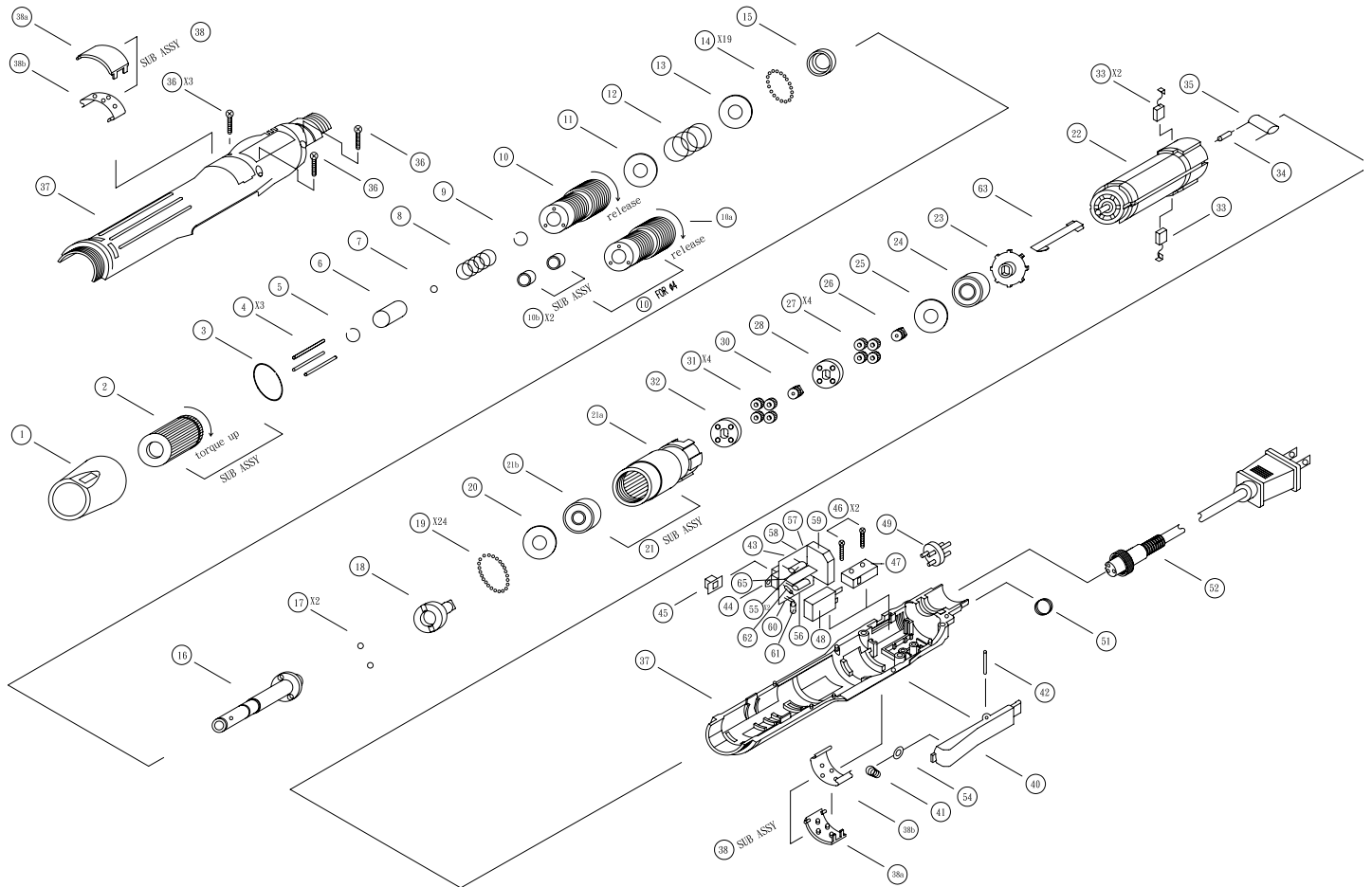


AE-2015 ELECTRIC SCREWDRIVER

EXPLODED VIEW



PARTS LIST — FOR REFERENCE ONLY

Index Number	Part Number	Description	Qty.	Index Number	Part Number	Description	Qty.	Index Number	Part Number	Description	Qty.
1	6H1041	RETAINING RING	1	22	2M5032	MOTOR 220V	1	45	6V1042	PUSH BUTTON	1
2	4J1089	REGULATING HANDLE SUB ASS'Y	1	23	6R2021	FAN	1	46	8T2047	TRIPPING SCREW	2
3	4U1056	SNAP RING	1	24	4E1018	BALL BEARING	1	47	2S3012	MICRO SWITCH	1
4	4N1025	PUSH PIN (L=17.6)	3	25	4W3012	WASHER	1	48	2F3015	PROTECTOR	1
5	4U1052	SNAP RING	1	26	4G1613	DRIVING GEAR	1	49	2G1016	3P SOCKET	1
6	4H2081	BIT SLIDE SLEEVE	1	27	4G2652	FIRST PLANET GEAR	4	51	4F1023	HANGER RING	1
7	4B1026	BALL	1	28	4L1813	FIRST GEAR CAGE	1	52	2W1086	AC CORD (OLD#2W1027)	1
8	4S3064	SLEEVE SPRING	1	30	4G1611	GEAR (14T)	1	53	8T1087	SCREW	1
9	4U1051	SNAP RING	1	31	4G2685	SECOND PLANET GEAR (14T)	4	54	4W1213	WASHER	1
10	4T1021	HAMMER CASING	1	32	4L1812	SECOND GEAR CAGE	1	Available only as an assembly item #43			
11	4W4215	PUSH WASHER	1	33	2B1014	BRUSH (PAIR)	2	55	2C6811	CAPACITOR	2
12	4S1040	SPRING	1	34	2R2014	RESISTOR	1	56	2C6812	CAPACITOR	1
13	4W4811	PUSH WASHER	1	35	2C6812	CAPACITOR	1	57	2R2014	RESISTOR	2
14	4B1024	BALL	19	36	8T2690	TAPPING SCREW	3	58	2H1077	CIRCUIT BOARD	1
15	4E2016	BALL BEARING	1	37	6Z1077	PLASTIC HOUSING (L+R)	1	59	2E1036	BRIDGE RECTIFIER	1
16	4C1302	ANVIL SUB ASS'Y	1	38	6A2011	CARBON MAINTENANCE BONNET SUB ASS'Y	(1)	60	2R8416	RESISTOR	1
18	4K1071	HAMMER	1	38A	6C3011	CARBON MAINTENANCE BONNET SET	2	61	2N1012	LED	1
19	4B1024	BALL	24	38B	4S5012	SPRING CONNECTOR	2	62	2D4017	SILICON RECTIFIER	1
20	4W3213	WASHER	1	40	6P3013	TRIGGER	1	63	4S5017	SPRING CONNECTOR	1
21	4A7010	GEAR HOUSING SUB ASS'Y INC. 21A-21B	(1)	41	S43051	SPRING	1	65	9P1031	INSULATION SPACER	1
21A	4X1021	GEAR HOUSING	1	42	4N1017	PIN	1				
21B	4E1013	BALL BEARING	1	43	2A6015	PWB SUB ASS'Y	1				
22	2M5031	MOTOR 110V	1	44	2S2019	FWD/REV SLIDE SW	1				

FOOTNOTES

- Part # 21, 4A7019 they have to combine with " gear housing & ball bearing " so, pls send your purchase order based on " set " unit.
- Part # 38, 6A2011 please send your purchase order based on " set " unit.
- Part# 58 ~ 65, no need to replace because they are not consumable. Without pricing.



10000 SE PINE,
PORTLAND, OR 97216
503-254-6600
FAX 503-255-2615

When ordering spare parts, please specify
tool type, part number and description.